



### POWER CHUCK SOFT JAWS - STEEL

60 deg x 1.5mm Serrations

- For Kitagawa, Samchully, Chandox, Bison etc Power Chucks
- Made from carbon case hardening steel, 080A15 (EN32)
- Bright finish
- Supplied in a set of 3



Chuck Size	Key Way	Hole Centres	Length	Width	Height	Type	Nose	Order Code	Net Price
4"	8	15	50	20	25	Standard	Pointed	SJ04002P	£34.38
4"	10	14	50	25	25	Standard	Flat	SJ204005	£42.89
5"	10	18	60	25	30	Standard	Pointed	SJ510001P	£41.95
			72	30	31	Standard		SJ06030B	£24.20
6"	12	20	72	30	50	High	Pointed	SJ06050B	£39.22
			82	30	31	Long		SJ06L82P	£31.63
			95	35	37	Standard	Pointed	SJ08037B	£28.60
8"	14	25	95	35	80	High	Pointed	SJ08080B	£50.60
			95	35	100	Ex.High	Flat	SJ08H100F	£107.22
			120	40	40	Long	Pointed	SJ08L120P	£50.60
			110	40	42	Standard	Pointed	SJ10042B	£38.50
10"	16	30	110	40	80	High	Pointed	SJ10080B	£64.52
			110	40	120	Ex.High	Flat	SJ10H120F	£145.19
			150	50	50	Long	Flat	SJ10L150F	£72.27
			130	50	50	Standard		SJ12048B18	£63.80
12"	18	30	130	50	80	High		SJ12080B18	£89.62
			130	50	120	Ex.High	Flat	SJ12H120F	£163.28
			180	50	50	Long		SJ12L180F	£100.83
			130	50	50	Standard		SJ12048B21	£63.80
12"	21	30	130	50	80	High		SJ12080B21	£91.08
			130	50	100	Ex.High	Flat	SJ12H100F	£153.08
			180	50	50	Long		SJ12L180F	£105.89
			165	60	72	Standard		SJ15062A-22	£158.13
15"	22	43	165	60	120	High	Flat	SJ15H120F	£262.44
			230	70	70	Long		SJ15L230F	£240.03
			180	70	70	Standard		SJ215001	£124.82
18"	25.5	43	180	70	120	High	Flat	SJ215004	£208.03
			180	70	70	Standard		SJ21F	£198.43
			180	70	120	High	Flat	SJ21H120F	£304.04
21"	25	60	230	80	80	Long		SJ21L230F	£300.84



### POWER CHUCK SOFT JAWS - STEEL

60 deg x 1.5mm Serrations

- For Kitagawa, Samchully, Chandox, Bison etc Power Chucks
- Made from carbon case hardening steel, 080A15 (EN32)
- Blackened finish
- Supplied in a set of 3



Chuck Size	Key Way	Hole Centres	Length	Width	Height	Type	Nose	Order Code	Net Price
6"	12	20	72	30	35	Standard	Flat	BO06	£29.70
			72	30	30	Standard	Pointed	BA06	£33.75
			72	30	50	High	Flat	BC06	£44.53
			82	30	30	Long	Pointed	PT06	£40.49
8"	14	25	94	35	40	Standard	Flat	BO08	£32.40
			95	40	40	Standard	Pointed	BA08	£37.80
			95	35	80	High	Flat	DJ08	£60.74
			102	35	40	Long	Pointed	PT08	£48.59
10"	16	30	110	40	40	Standard	Flat	BO10	£35.08
			110	40	40	Standard	Pointed	BA10	£40.49
			110	40	80	High	Flat	DJ10	£67.49
			125	45	40	Long	Pointed	PT10	£55.33
12"	18	30	130	50	50	Standard	Flat	BO12	£51.28
			130	50	80	High	Flat	DJ12	£94.48
			145	50	50	Standard	Pointed	PT12	£87.74
			130	50	50	Standard	Flat	BR13	£51.28
12"	21	30	130	50	80	High	Flat	DJ13	£94.48
			145	50	50	Standard	Pointed	PT13	£79.64
			165	60	80	Standard		BO15	£107.99
			165	60	125	High	Flat	DJ15	£249.71
15"	22	43	205	80	80	Long		BF15	£222.71
			60	Standard		BR15	£94.49		
			100	High	Flat	BR16	£168.73		
18"	25.5	43	135	50	60	Standard		BO18	£188.97
			100	High	Flat	BR16	£168.73		
21"	25	60	180	60	80	Standard	Flat	BO18	£188.97
			125	High		DJ18	£290.20		

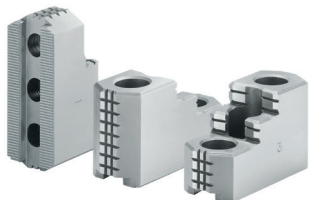
POWER CHUCK JAWS



### HARD STEPPED JAWS

1.5mm x 60° Serrations

- For Kitagawa, Chandox & Samchully power chucks
- For OD and ID clamping
- Supplied in a set of 3



Chuck Size	Keyway	Hole Centres	Width	Order Code	Net Price
4"	10	14	23	HB04N1	£654.62
5"	10	14	23	HJ05	£246.29
6"	12	20	31	HJ06	£223.30
8"	14	25	35	HJ08	£256.56
10"	16	30	40	HJ10	£315.05
12"	18	30	50	HJ12-18	£420.30
12"	21	30	50	HJ12-21	£420.30
15"	22	43	62	HJ15-22	£744.31
21"	25	50	80	HJ21	£1,055.05



### POWER CHUCK SOFT JAWS - ALUMINIUM

60 deg x 1.5mm Serrations

- For Kitagawa, Chandox & Samchully power chucks
- Made from aluminium HE30TF
- Bright finish
- Supplied in a set of 3



Chuck Size	Key Way	Hole Centres	Length	Width	Height	Type	Nose	Order Code	Net Price
6"	12	20	72	32	38	Standard		AA06	£47.24
					76	High	AB06	£60.74	
8"	14	25	95	32	44	Standard		AA08	£60.74
					76	High	AB08	£94.48	
					102	Ex.High	AC08	£94.48	
10"	16	30	110	38	51	Standard		AA10	£74.24
					76	High	AB10	£101.23	
					102	Ex.High	AC10	£107.99	
					51	Standard	AA12	£101.23	
12"	18	30	130	51	76	High		AB12	£107.99
					102	Ex.High	AC12	£121.47	
					51	Standard	AA12	£101.23	
					76	High	AB12	£107.99	
21"	30	130	51	102	76	High		AB12	£107.99
					102	Ex.High	AC12	£121.47	



### FULL GRIP SOFT PIE JAWS

1.5mm x 60° Serrations

- For Kitagawa, Samchully, Chandox, Bison etc Power Chucks
- Supplied in a set of 3
- Aluminium or steel



Chuck Size	Keyway	Hole Centres	Height	Material	Order Code	Net Price
4"	10	14	32	Alu	FW-A04032	£211.86
5"	10	14	32	Alu	FW-A05032	£190.70
6"	12	20	40	Alu	FW-A06040	£162.00
				Steel	FW06040	£286.14
8"	14	25	40	Alu	FW-A08040	£185.00
				Steel	FW08040	£298.89
10"	16	30	50	Alu	FW-A10050	£243.00
				Steel	FW10050	£400.87
12"	18	30	50	Alu	FW-A12050-18	£282.16
				Steel	FW-A12050-21	£282.16



### FULL GRIP SOFT PIE SEGMENT JAWS

1.5mm x 60° Serrations

- For Kitagawa, Samchully, Chandox, Bison etc Power Chucks
- Supplied in a set of 3
- Aluminium or steel



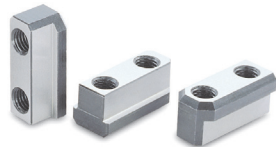
Chuck Size	Keyway	Hole Centres	Height	Material	Order Code	Net Price
6"	12	20	76	Alu	SG06	£308.96
				Steel	AG06	£342.53
8"	14	20	76	Alu	AG08	£396.26
				Steel	SG08	£355.96
10"	16	30	76	Alu	SG10	£436.56
				Steel	AG10	£476.87
12"	18	30	76	Alu	AG12	£664.92
				Steel	SG12	£570.90
12"	21	30	76	Alu	SG13	£597.75
				Steel	AG13	£664.92
15"	22	43	76	Alu	HN38	£564.17
18"						



### POWER CHUCK T-NUTS

Metric

- For Kitagawa, Chandox & Smachully power chucks
- Supplied in a set of 3



Chuck Size	Kitagawa Chuck	Width/Keyway	Hole Centres	Height	Order Code	Net Price
6"	B-06	12	20	22.5	TB06	£72.50
8"	B-08	14	25	25.5	TB08	£86.01
10"	B-10	16	30	25.5	TB10	£93.79
12"	B-12	18	30	33.5	TB12	£90.42
4"	B-204	10	14	15	KTNB204	£141.27
5"	B-205	10	14	15	T05	£61.42
6"	B-206	12	20	18.5	T06	£69.77
8"	B-208	14	25	20.5	T08 (T-NUT)	£83.53
10"	B-210	16	30	21.5	T10	£97.39
12"	B-212	21	30	27.8	T12	£131.27
15"	B-15	24	43	45.5	T15 (T-NUT)	£187.14
21"	B-21	25	60	45	T21	£193.60



### FULL GRIP DIAMOND SOFT JAWS

1.5mm x 60° Serrations

- For Kitagawa, Samchully, Chandox, Bison etc Power Chucks
- Supplied in a set of 3
- Aluminium or steel

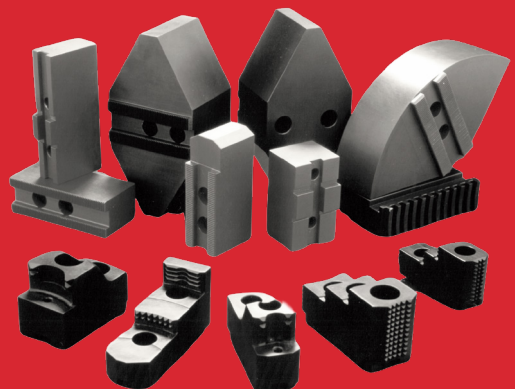


Chuck Size	Keyway	Hole Centres	Width	Height	Material	Order Code	Net Price
6"	12	20	120	64	Alu	HN16	£221.63
					Steel	CN16	£214.92
8"	14	20	120	64	Alu	HN20	£261.94
					Steel	CN20	£248.51
10"	16	30	170	64	Alu	CN25	£295.51
					Steel	HN25	£315.66
12"	18	30	240	76	Alu	CN32	£463.43
					Steel	HN32	£523.88
12"	21	30	240	76	Alu	HN33	£497.01
					Steel	CN33	£463.43
15"	22	43	280	76	Alu	HN38	£564.17
18"							



**When precision and uptime matter, the quality of your workholding makes all the difference.**

Thame's comprehensive range of British made chuck jaws gives you the flexibility to tackle any job with the accuracy and durability that keep your production running at its best.



POWER CHUCK JAWS