



2026 **SPECIAL SELECTION**

LATHE WORKHOLDING

**CHUCKS & CHUCK JAWS
LIVE & DEAD CENTRES
COLLETS**

- ✓ **HIGHEST QUALITY FOR SECURE AND REPEATABLE CLAMPING**
- ✓ **EXTENSIVE RANGE OF STOCK FOR NEXT DAY DELIVERY**
- ✓ **EXPERT TECHNICAL SUPPORT**
- ✓ **FULL RANGE OF WORKHOLDING SOLUTIONS AVAILABLE ON CUTWEL.CO.UK**



ORION

klamp

cutwel PRO



ortlieb



RÖHM



NEW

03330 389849 **SALES@CUTWEL.NET** **CUTWEL.CO.UK**



POWER CHUCK SOFT JAWS - STEEL

60 deg x 1.5mm Serrations

- For Kitagawa, Samchully, Chandox, Bison etc Power Chucks
- Made from carbon case hardening steel, 080A15 (EN32)
- Bright finish
- Supplied in a set of 3



Chuck Size	Key Way	Hole Centres	Length	Width	Height	Type	Nose	Order Code	Net Price
4"	8	15	50	20	25	Standard	Pointed	SJ04002P	£34.38
4"	10	14	50	25	25	Standard	Flat	SJ204005	£42.89
5"	10	18	60	25	30	Standard	Pointed	SJ510001P	£41.95
			72	30	31	Standard		SJ06030B	£24.20
6"	12	20	72	30	50	High	Pointed	SJ06050B	£39.22
			82	30	31	Long		SJ06L82P	£31.63
			95	35	37	Standard	Pointed	SJ08037B	£28.60
8"	14	25	95	35	80	High	Pointed	SJ08080B	£50.60
			95	35	100	Ex.High	Flat	SJ08H100F	£107.22
			120	40	40	Long	Pointed	SJ08L120P	£50.60
			110	40	42	Standard	Pointed	SJ10042B	£38.50
10"	16	30	110	40	80	High	Pointed	SJ10080B	£64.52
			110	40	120	Ex.High	Flat	SJ10H120F	£145.19
			150	50	50	Long	Flat	SJ10L150F	£72.27
			130	50	50	Standard		SJ12048B18	£63.80
12"	18	30	130	50	80	High		SJ12080B18	£89.62
			130	50	120	Ex.High	Flat	SJ12H120F	£163.28
			180	50	50	Long		SJ12L180F	£100.83
			130	50	50	Standard		SJ12048B21	£63.80
12"	21	30	130	50	80	High		SJ12080B21	£91.08
			130	50	100	Ex.High	Flat	SJ12H100F	£153.08
			180	50	50	Long		SJ12L180F	£105.89
			165	60	72	Standard		SJ15062A-22	£158.13
15"	22	43	165	60	120	High	Flat	SJ15H120F	£262.44
			230	70	70	Long		SJ15L230F	£240.03
			180	70	70	Standard		SJ215001	£124.82
18"	25.5	43	180	70	120	High	Flat	SJ215004	£208.03
			180	70	70	Standard		SJ21F	£198.43
			180	70	120	High	Flat	SJ21H120F	£304.04
21"	25	60	230	80	80	Long		SJ21L230F	£300.84



POWER CHUCK SOFT JAWS - STEEL

60 deg x 1.5mm Serrations

- For Kitagawa, Samchully, Chandox, Bison etc Power Chucks
- Made from carbon case hardening steel, 080A15 (EN32)
- Blackened finish
- Supplied in a set of 3



Chuck Size	Key Way	Hole Centres	Length	Width	Height	Type	Nose	Order Code	Net Price
6"	12	20	72	30	35	Standard	Flat	BO06	£29.70
			72	30	30	Standard	Pointed	BA06	£33.75
			72	30	50	High	Flat	BC06	£44.53
			82	30	30	Long	Pointed	PT06	£40.49
8"	14	25	94	35	40	Standard	Flat	BO08	£32.40
			95	40	40	Standard	Pointed	BA08	£37.80
			95	35	80	High	Flat	DJ08	£60.74
			102	35	40	Long	Pointed	PT08	£48.59
10"	16	30	110	40	40	Standard	Flat	BO10	£35.08
			110	40	40	Standard	Pointed	BA10	£40.49
			110	40	80	High	Flat	DJ10	£67.49
			125	45	40	Long	Pointed	PT10	£55.33
12"	18	30	130	50	50	Standard	Flat	BO12	£51.28
			130	50	80	High	Flat	DJ12	£94.48
			145	50	50	Standard	Pointed	PT12	£87.74
			130	50	50	Standard	Flat	BR13	£51.28
12"	21	30	130	50	80	High	Flat	DJ13	£94.48
			145	50	50	Standard	Pointed	PT13	£79.64
			165	60	80	Standard		BO15	£107.99
15"	22	43	165	60	125	High	Flat	DJ15	£249.71
			205	80	80	Long		BF15	£222.71
			180	70	70	Standard		BR15	£94.49
18"	25.5	43	180	70	100	High	Flat	BR16	£168.73
			180	70	120	High	Flat	BR15	£94.49
21"	25	60	180	70	50	Standard		BO18	£188.97
			180	70	120	High	Flat	BR16	£168.73
21"	25	60	180	60	80	Standard	Flat	BO18	£188.97
			180	60	125	High		DJ18	£290.20

POWER CHUCK JAWS



HARD STEPPED JAWS

1.5mm x 60° Serrations

- For Kitagawa, Chandox & Samchully power chucks
- For OD and ID clamping
- Supplied in a set of 3



Chuck Size	Keyway	Hole Centres	Width	Order Code	Net Price
4"	10	14	23	HB04N1	£654.62
5"	10	14	23	HJ05	£246.29
6"	12	20	31	HJ06	£223.30
8"	14	25	35	HJ08	£256.56
10"	16	30	40	HJ10	£315.05
12"	18	30	50	HJ12-18	£420.30
12"	21	30	50	HJ12-21	£420.30
15"	22	43	62	HJ15-22	£744.31
21"	25	50	80	HJ21	£1,055.05



POWER CHUCK SOFT JAWS - ALUMINIUM

60 deg x 1.5mm Serrations

- For Kitagawa, Chandox & Samchully power chucks
- Made from aluminium HE30TF
- Bright finish
- Supplied in a set of 3



Chuck Size	Key Way	Hole Centres	Length	Width	Height	Type	Nose	Order Code	Net Price
6"	12	20	72	32	38	Standard		AA06	£47.24
					76	High	AB06	£60.74	
8"	14	25	95	32	44	Standard		AA08	£60.74
					76	High	AB08	£94.48	
					102	Ex.High	AC08	£94.48	
10"	16	30	110	38	51	Standard		AA10	£74.24
					76	High	AB10	£101.23	
					102	Ex.High	AC10	£107.99	
					51	Standard	AA12	£101.23	
12"	18	30	130	51	76	High		AB12	£107.99
					102	Ex.High	AC12	£121.47	
					51	Standard	AA12	£101.23	
					76	High	AB12	£107.99	
21"	30	130	51	102	76	High		AB12	£107.99
					102	Ex.High	AC12	£121.47	



FULL GRIP SOFT PIE JAWS

1.5mm x 60° Serrations

- For Kitagawa, Samchully, Chandox, Bison etc Power Chucks
- Supplied in a set of 3
- Aluminium or steel



Chuck Size	Keyway	Hole Centres	Height	Material	Order Code	Net Price
4"	10	14	32	Alu	FW-A04032	£211.86
5"	10	14	32	Alu	FW-A05032	£190.70
6"	12	20	40	Alu	FW-A06040	£162.00
				Steel	FW06040	£286.14
8"	14	25	40	Alu	FW-A08040	£185.00
				Steel	FW08040	£298.89
10"	16	30	50	Alu	FW-A10050	£243.00
				Steel	FW10050	£400.87
12"	18	30	50	Alu	FW-A12050-18	£282.16
				Steel	FW-A12050-21	£282.16



FULL GRIP SOFT PIE SEGMENT JAWS

1.5mm x 60° Serrations

- For Kitagawa, Samchully, Chandox, Bison etc Power Chucks
- Supplied in a set of 3
- Aluminium or steel



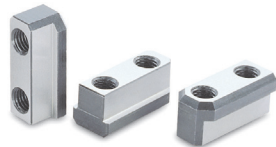
Chuck Size	Keyway	Hole Centres	Height	Material	Order Code	Net Price
6"	12	20	76	Alu	SG06	£308.96
				Steel	AG06	£342.53
8"	14	20	76	Alu	AG08	£396.26
				Steel	SG08	£355.96
10"	16	30	76	Alu	SG10	£436.56
				Steel	AG10	£476.87
12"	18	30	76	Alu	AG12	£664.92
				Steel	SG12	£570.90
12"	21	30	76	Alu	SG13	£597.75
				Steel	AG13	£664.92
15"	22	43	76	Alu	HN38	£564.17
18"						



POWER CHUCK T-NUTS

Metric

- For Kitagawa, Chandox & Smachully power chucks
- Supplied in a set of 3



Chuck Size	Kitagawa Chuck	Width/Keyway	Hole Centres	Height	Order Code	Net Price
6"	B-06	12	20	22.5	TB06	£72.50
8"	B-08	14	25	25.5	TB08	£86.01
10"	B-10	16	30	25.5	TB10	£93.79
12"	B-12	18	30	33.5	TB12	£90.42
4"	B-204	10	14	15	KTNB204	£141.27
5"	B-205	10	14	15	T05	£61.42
6"	B-206	12	20	18.5	T06	£69.77
8"	B-208	14	25	20.5	T08 (T-NUT)	£83.53
10"	B-210	16	30	21.5	T10	£97.39
12"	B-212	21	30	27.8	T12	£131.27
15"	B-15	24	43	45.5	T15 (T-NUT)	£187.14
21"	B-21	25	60	45	T21	£193.60



FULL GRIP DIAMOND SOFT JAWS

1.5mm x 60° Serrations

- For Kitagawa, Samchully, Chandox, Bison etc Power Chucks
- Supplied in a set of 3
- Aluminium or steel

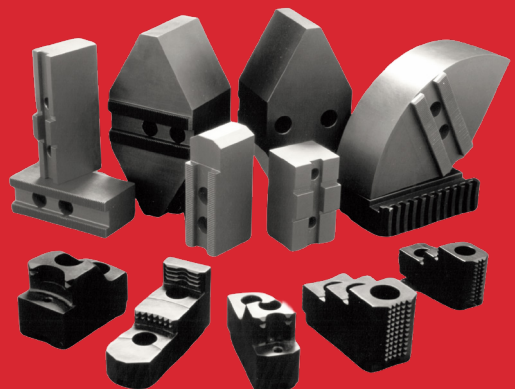


Chuck Size	Keyway	Hole Centres	Width	Height	Material	Order Code	Net Price
6"	12	20	120	64	Alu	HN16	£221.63
					Steel	CN16	£214.92
8"	14	20	120	64	Alu	HN20	£261.94
					Steel	CN20	£248.51
10"	16	30	170	64	Alu	CN25	£295.51
					Steel	HN25	£315.66
12"	18	30	240	76	Alu	CN32	£463.43
					Steel	HN32	£523.88
12"	21	30	240	76	Alu	HN33	£497.01
					Steel	CN33	£463.43
15"	22	43	280	76	Alu	HN38	£564.17
18"							



When precision and uptime matter, the quality of your workholding makes all the difference.

Thame's comprehensive range of British made chuck jaws gives you the flexibility to tackle any job with the accuracy and durability that keep your production running at its best.



POWER CHUCK JAWS



SCROLL CHUCK JAWS FOR BISON 3 JAW CHUCKS

- For Bison scroll chucks
- Supplied in a set of 3



Chuck Size	Order Code									
	1pc Soft Jaws (Cutwel Pro)	Net Price	1pc Soft Jaws (Bison)	Net Price	Soft Top Jaws (Bison)	Net Price	Hard Jaws Outside Clamping (Bison)	Net Price	Hard Jaws Outside / Inside Clamping (Bison)	Net Price
80	BSJ32003500-80	£66.07	SJM32003500-80	£89.25	-	-	SJW35003200-80	£114.45	SJZ32003500-80	£113.40
100	BSJ32003500-100	£66.07	SJM32003500-100	£95.55	-	-	SJW35003200-100	£134.40	SJZ32003500-100	£138.60
125	BSJ32003500-125	£71.35	SJM32003500-125	£100.80	SGM32003500-125	£89.25	SJW35003200-125	£168.00	SJZ32003500-125	£145.95
160	BSJ32003500-160	£78.88	SJM32003500-160	£112.35	SGM32003500-160	£101.85	SJW35003200-160	£195.30	SJZ32003500-160	£190.05
200	BSJ32003500-200	£89.85	SJM32003500-200	£126.00	SGM32003500-200	£105.00	SJW35003200-200	£202.65	SJZ32003500-200	£195.30
250	BSJ32003500-250	£121.56	SJM32003500-250	£187.95	SGM32003500-250	£142.80	SJW35003200-250	£237.30	SJZ32003500-250	£224.70
315	BSJ32003500-315	£174.42	SJM32003500-315	£248.85	SGM32003500-315	£182.70	SJW35003200-315	£395.85	SJZ32003500-315	£345.45
400	-	-	SJM32003500-400	£264.60	SGM32003500-400	£257.25	SJW35003200-400	£437.85	SJZ32003500-400	£443.10
500	-	-	SJM32003500-500	£636.30	SGM32003500-500	£334.95	SJW35003200-500	£1,055.38	SJZ32003500-500	£1,010.10
630	-	-	SJM32003500-630	£915.60	SGM32003500-630800	£465.15	SJW35003200-630	£1,293.60	SJZ32003500-630	£1,293.60



SCROLL CHUCK JAWS FOR PRATT BURNERD 3 JAW CHUCKS

- For Pratt Burnerd scroll chucks
- 1pc integral type
- Supplied in a set of 3



Chuck Size	Order Code									
	1pc Soft Jaws (Thame TEC)	Net Price	1pc Soft Jaws (Pratt Burnerd)	Net Price	Soft Top Jaws (Pratt Burnerd)	Net Price	Hard Jaws Inside Clamping (Pratt Burnerd)	Net Price	Hard Jaws Outside Clamping (Pratt Burnerd)	Net Price
80	EK08	£43.62	PB-8210-08606	£45.52	-	-	PB-8210-08603	£169.22	PB-8210-08602	£181.00
100	EK10	£45.16	PB-8210-10606	£52.48	PB-2580-10609	£193.85	PB-8210-10603	£178.86	PB-8210-10602	£193.85
125	EK13	£49.82	PB-8210-13606	£57.83	PB-2210-13609	£100.67	PB-8210-13603	£212.06	PB-8210-13602	£212.06
160	EK16	£54.50	PB-8210-17606	£69.62	PB-2210-17609	£126.38	PB-8210-17603	£227.05	PB-8210-17602	£227.05
200	EK20	£59.17	PB-8210-20606	£81.40	PB-2210-20609	£141.75	PB-8210-20603	£296.67	PB-8210-20602	£273.11
250	EK25	£77.87	PB-8210-25606	£106.03	PB-2210-25609	£153.15	PB-8210-25603	£401.63	PB-8210-25602	£401.63
315	EK32	£96.56	PB-8210-32606	£147.80	PB-2210-32609	£237.15	PB-8210-32603	£433.76	PB-8210-32602	£419.65
400	EK40	£140.16	PB-8210-40606	£188.50	PB-2580-38609	£247.40	PB-8210-40603	£516.22	PB-8210-40602	£572.99
500	EK50	£280.34	PB-8580-50606	£662.95	-	-	PB-8210-50603	£1,842.12	PB-8210-50602	£1,842.12



LATHE CHUCK WORKPIECE STOP

- For clamping short parts on lathe chucks
- Made from aluminium with 3 magnets for secure fastening to chuck body
- Polished contact surfaces



Work Stop Height	Min Jaw Width	Max Jaw Width	Min/Max Workpiece Dia	Order Code	Net Price
15				22474015	£50.21
20				22474020	£50.21
25				22474025	£51.59
30				22474030	£51.59
35				22474035	£53.77
15/20/25/30/35 (Set)	25	55	15-130	22474100	£212.79

SCROLL CHUCK JAWS & ACCESSORIES



3 JAW CAST IRON SCROLL CHUCKS

- Made in Italy
- Integral 1pc self centring jaws
- CSC301 series rear mount (recessed back)
- CSC303 series rear & front mount



Chuck Diameter	Bore Diameter	Order Code			
		CSC301 Series	Net Price	CSC303 Series	Net Price
80	16	CSC301-80	£239.62	CSC303-80	£289.94
100	20	CSC301-100	£278.23	CSC303-100	£307.50
125	32	CSC301-125	£292.88	CSC303-125	£322.16
160	42	CSC301-160	£306.83	CSC303-160	£344.12
200	55	CSC301-200	£410.01	CSC303-200	£453.94
250	76	CSC301-250	£571.10	CSC303-250	£629.67
315	103	CSC301-315	£820.03	CSC303-315	£900.57
400	136	CSC301-400	£1,464.33	CSC303-400	£1,610.77
500	190	CSC301-500	£3,660.86	CSC303-500	£3,953.71
630	252	CSC301-630	£6,735.96	CSC303-630	£7,028.84



3 JAW CAST IRON SCROLL CHUCKS

- From market leader Bison Bial
- Integral 1pc self centring jaws
- 3204 series rear mount (recessed back)
- 3274 series rear & front mount



Chuck Diameter	Bore Diameter	Order Code			
		3204 Series	Net Price	3274 Series	Net Price
80	16	3204-80	£408.45	3274-80	£543.90
100	20	3204-100	£465.15	3274-100	£602.70
125	32	3204-125	£496.65	3274-125	£667.80
160	42	3204-160	£580.65	3274-160	£694.05
200	55	3204-200	£729.75	3274-200	£750.75
250	76	3204-250	£997.50	3274-250	£1,034.25
315	103	3204-315	£1,485.75	3274-315	£1,617.00
400	136	3204-400	£1,988.80	3274-400	£2,883.63
500	190	3204-500	£3,728.21	3274-500	£4,980.64
630	252	3204-630	£5,551.33	3274-630	£6,548.67



3 JAW SG IRON SCROLL CHUCKS

- Integral 1pc self centring jaws
- 9580 series front mount
- 9250 series rear mount (adjustable accuracy - Griptru type)

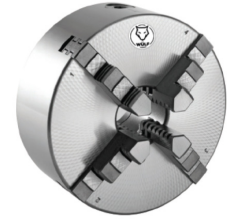


Chuck Diameter	Bore Diameter	Order Code			
		9580 Series	Net Price	9250 Series	Net Price
80	19	PB-9580-00805	£325.58	PB-9250-00805	£721.85
100	25.4	PB-9580-01005	£319.16	PB-9250-01005	£816.10
125	35	PB-9580-01305	£394.13	PB-9250-01305	£934.98
160	45.9	PB-9580-01705	£471.24	PB-9250-01705	£1,029.23
200	54.8	PB-9580-02005	£593.33	PB-9250-02005	£1,280.92
250	75.9	PB-9580-02505	£825.74	PB-9250-02505	£1,609.71
315	105	PB-9580-03205	£1,351.60	PB-9250-03205	£2,261.95



4 JAW STEEL BODY SCROLL CHUCKS

- Made in Italy
- Integral 1pc self centering jaws
- Rear mount (recessed back)



Chuck Diameter	Bore Diameter	Order Code	Net Price
125	35	CSC401-125	£366.09
160	42	CSC401-160	£439.31
200	55	CSC401-200	£512.52
250	76	CSC401-250	£732.18
315	103	CSC401-315	£1,025.04
400	136	CSC401-400	£1,903.65
500	190	CSC401-500	£4,832.31
630	252	CSC401-630	£9,225.34



4 JAW INDEPENDENT CHUCKS

- Made in Italy
- Cast iron body
- Rear mount (recessed back)



Chuck Diameter	Bore Diameter	Order Code	Net Price
200	50	CSC441-200	£439.31
250	65	CSC441-250	£461.28
315	95	CSC441-315	£600.38
400	125	CSC441-400	£863.96
500	160	CSC441-500	£1,391.11
630	180	CSC441-630	£2,196.51
800	210	CSC441-800	£4,393.02
1000	305	CSC441-1000	£8,346.73



4 JAW SELF CENTRING SCROLL CHUCKS

With 1 Piece Jaws (Rear Mount)

- 1pc solid jaw type
- Cast Iron Body
- Rear mount features recessed back for use with adapter plate
- Supplied with 1 set of inside and outside



Chuck Diameter	Bore Diameter	Order Code	Net Price
125	32	3604-125	£663.60
160	42	3604-160	£729.75
200	55	3604-200	£849.45
250	76	3604-250	£1,132.95
315	103	3604-315	£1,703.10
400	136	3604-400	£3,636.15
500	190	3604-500	£6,355.65

SCROLL CHUCKS & INDEPENDENT CHUCKS



OIL COUNTRY 3 JAW SCROLL CHUCK

With 2 Piece Jaws (Rear Mount)

- Large through-holes are designed for gripping long and heavy workpieces or pipes during heavy-duty (HD) machining
- Self centring
- 2pc tongue and groove jaws
- Cast iron body
- Supplied with 1 set of base jaws, soft top jaws & wrench



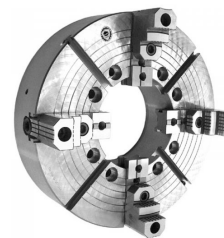
Chuck Diameter	Bore Diameter	Order Code	Net Price
400	220	3295-400	£2,669.33
508	320	3295-500	£3,938.92
660	406	3295-660	£6,490.00



OIL COUNTRY 4JAW SCROLL CHUCK

With 2 Piece Jaws (A2 Mount)

- Large through-holes are designed for gripping long and heavy workpieces or pipes during heavy-duty (HD) machining
- 2pc tongue and groove jaws
- Steel body
- Supplied with 1 set of hard top jaws & master jaws + chuck wrench



Chuck Diameter	Bore Diameter	Mount	Order Code	Net Price
20"	8"	A2-15	4317-20-15-8-HD	£4,721.75
25"	10.5"	A2-15	4317-25-15-10.5-HD	£5,942.06
25"	10.5"	A2-20	4317-25-20-10.5-HD	£5,942.06
25"	12.5"	A2-20	4317-25-20-12.5-HD	£5,942.06
32"	12.5"	A2-20	4317-32-20-12.5-HD	POA
32"	14.5"	A2-20	4317-32-20-14.5-HD	POA



6 JAW STEEL BODY SCROLL CHUCKS WITH FINE ADJUSTMENT

- Highest quality, Made in Italy
- Integral 1pc self centring jaws
- Rear mount (recessed back)



Chuck Diameter	Bore Diameter	Order Code	Net Price
200	55	CSC601-200	£1,230.05
250	76	CSC601-250	£1,391.11
315	103	CSC601-315	£2,196.51
400	136	CSC601-400	£3,514.41
500	190	CSC601-500	£7,321.69
630	252	CSC601-630	£11,421.84



6 JAW SELF CENTRING SCROLL CHUCKS

With 1 Piece Jaws (Rear Or Front Mount)

- 1pc solid jaw type
- Rear mount with recessed back for use with adapter plate
- Supplied with 1 set of inside and outside jaws + chuck wrench
- Cast iron body
- Plain back



Chuck Diameter	Bore Diameter	Order Code	Net Price
200	55	3804-200	£1,971.90
250	76	3804-250	£1,973.58
315	103	3804-315	£2,683.08
400	136	3804-400	£4,702.08
500	190	3804-500	£6,663.64
630	252	3804-630	£9,944.73



6 JAW SELF CENTRING SCROLL CHUCKS

Lever Type For Tool Grinding

- For grinding twist drills and other cutting tools
- Fine adjustment radially set screws provide nearly 0mm run-out
- 1pc solid jaw type
- Supplied with 1 set of hard solid jaws and operating lever
- Steel body



Chuck Diameter	Bore Diameter	Order Code	Net Price
125	38	3866-125	£1,464.75
160	52	3866-160	£2,873.85



6 JAW SELF CENTRING SCROLL CHUCKS

For Tool Grinding

- For grinding twist drills and other cutting tools
- Rear mount with recessed back for use with adapter plate
- 1pc solid jaw type
- Supplied with 1 set of hard solid jaws and wrench
- Steel body
- Plain back



Chuck Diameter	Bore Diameter	Order Code	Net Price
85	25.5	3867-85	£917.70



ADAPTER PLATES - CAMLOCK MOUNT

Fully Finished

- For use with plain back self centring scroll chucks, front
- For support selecting the right adapter plate please call our technical team



Chuck Size	Camlock Mount	Order Code	Net Price
125	D1-4	8240-125-4-X	£265.65
160	D1-4	8240-160-4-X	£311.85
160	D1-5	8240-160-5-X	£311.85
200	D1-4	8240-200-4-X	£340.20
200	D1-5	8240-200-5-X	£340.20
200	D1-6	8240-200-6-X	£340.20
250	D1-6	8240-250-6-X	£443.10
250	D1-8	8240-250-8-X	£443.10
315	D1-6	8240-315-6-X	£584.85
315	D1-8	8240-315-8-X	£584.85
315	D1-11	8240-315-11-X	£584.85



ADAPTER PLATES - A2 MOUNT

Fully Finished

- For use with plain back self centring scroll chucks, front
- For support selecting the right adapter plate please call our technical team

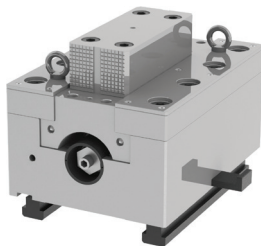


Chuck Size	Camlock Mount	Order Code	Net Price
125	A2-3	8210-125-3A2-X	£132.30
160	A2-4	8210-160-4A2-X	£244.65
160	A2-5	8210-160-5A2-X	£244.65
200	A2-5	8210-200-5A2-X	£260.40
200	A2-6	8210-200-6A2-X	£260.40
250	A2-5	8210-250-5A2-X	£322.35
250	A2-6	8210-250-6A2-X	£322.35
250	A2-8	8210-250-8A2-X	£322.35
315	A2-6	8210-315-6A2-X	£479.85
315	A2-8	8210-315-8A2-X	£479.85



BOX JAWS - MSP TYPE

- Set of 4 box jaws with Jakob power MSP screws
- Steel body with hardened and ground guideways
- Hardened clamping jaws HRC 57-60
- High clamping force with minimum operator effort

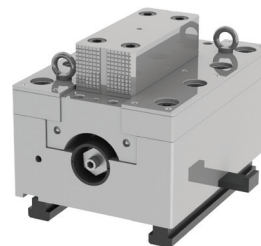


Clamping Force	Weight Per Jaw (kg)	Size mm LxWxH	Order Code	Net Price
660kN	164	430x330x150	9171-430-20T MSP	POA



BOX JAWS - MSPD TYPE

- Set of 4 box jaws with Jakob power MSPD screws
- Steel body with hardened and ground guideways
- Hardened clamping jaws HRC 57-60
- High clamping force with minimum operator effort



Clamping Force	Weight Per Jaw (kg)	Size mm LxWxH	Order Code	Net Price
400kN	705	630x448x410	9171-630-40TMSPD	POA



FACE PLATE JAWS

- Primarily for use on face plates for holding irregular shaped parts
- Set of 4



Width	Height	Clamping Force	Order Code	Net Price
130	159.8	28kN	9170-150	£2,290.09
140	169.8	35kN	9170-200	£2,969.15

IG **KORLOY**

CARBIDE TURNING INSERTS

Designed to deliver reliable performance on CNC lathes and manual turning machines.



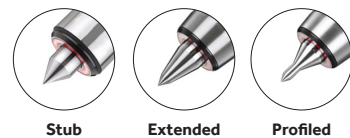
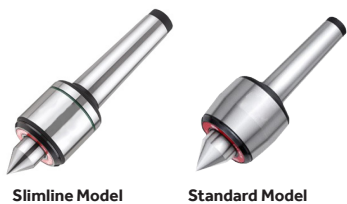
[View Full Range](#)

SCROLL CHUCKS ADAPTER PLATES & BOX JAWS



LIVE CENTRES - UNIVERSAL TYPE

- Available in slimline and standard type with stub, extended or profiled point



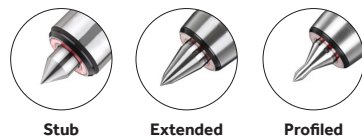
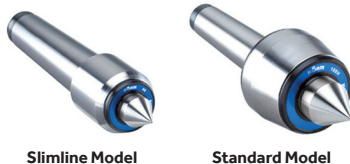
Shank	Max KG	Max RPM	Runout	Nose Dia	Nose Length	Body Dia	Point	Order Code	Net Price
Slimline Body									
MT3	375	6300	0.008	20	26	42	Stub	LC-MT3SMSP	£128.30
MT4	600	5600		24	32	54		LC-MT4SMSP	£139.70
MT5	1500	3300		0.015	38	51		87	LC-MT5SMSP
MT3	250	6300	0.008	20	38	42	Extended	LC-MT3SMEP	£128.30
MT4	375	5600		24	44	54		LC-MT4SMEP	£139.70
MT5	900	3300		0.015	38	65		87	LC-MT5SMEP
MT3	250	6300	0.008	20	38	42	Profiled	LC-MT3SMPP	£128.30
MT4	375	5600		24	44	54		LC-MT4SMPP	£139.70
MT5	900	3300		0.015	38	65		87	LC-MT5SMPP
Standard Body									
MT3	375	4500	0.008	28	34	62	Stub	LC-MT3IMSP	£116.90
MT4	600	3450		32	41	68		LC-MT4IMSP	£128.30
MT5	1500	2700		38	51	87		LC-MT5IMSP	£250.91
MT3	300	4500	0.008	28	51	62	Extended	LC-MT3IMEP	£116.90
MT4	375	3450		32	54.5	68		LC-MT4IMEP	£128.30
MT5	900	2700		38	65	87		LC-MT5IMEP	£250.91
MT3	240	4500	0.008	28	47	62	Profiled	LC-MT3IMPP	£116.90
MT4	300	3450		32	53	68		LC-MT4IMPP	£128.30
MT5	725	2700		38	65	87		LC-MT5IMPP	£250.91



LIVE CENTRES - HIGH PERFORMANCE

Highest Quality Live Centres from Global Market Leader Rohm

- Available in slimline and standard type with stub, extended or profiled point
- Exceptional quality and precision
- Highest durability
- Made in Germany



Shank	Max KG	Max RPM	Runout	Nose Dia	Nose Length	Body Dia	Point	Order Code	Net Price
Slimline Body - Pro Design									
MT2	200	7000	0.005	15	19.5	32	Stub	RHM-5336	£241.61
MT3	400	7000	0.005	15	19.5	34		RHM-5429	£251.06
MT4	800	6300	0.005	20	24.5	42		RHM-5469	£334.74
MT5	1600	4300	0.01	30	37	58		RHM-5490	£483.22
MT6	3500	3000	0.02	42	49.5	80		RHM-5547	£797.97
MT2	170	7000	0.008	15	29.5	32		RHM-362080	£290.19
MT3	340	7000	0.008	15	32	34	RHM-362081	£302.35	
MT4	700	6300	0.008	20	37.5	42	RHM-362082	£402.23	
MT5	1400	4300	0.01	30	51.5	58	RHM-362083	£579.06	
MT6	3000	3000	0.02	42	70.5	80	RHM-362084	£959.57	
MT2	50	7000	0.008	15	29.5	32	Profiled	RHM-1241695	£279.74
MT3	100	7000	0.008	15	32	34		RHM-1243505	£290.88
MT4	150	6300	0.008	20	37.5	42		RHM-1243507	£387.84
MT5	180	4300	0.01	30	51.5	58		RHM-1243509	£560.58
Standard Body - Pro Design									
MT1	100	7000	0.005	15	17	34.5	Stub	RHM-43400	£314.63
MT2	200	7000	0.005	20	24	43		RHM-43115	£314.63
MT3	500	5000	0.005	25	30.5	58.5		RHM-42776	£364.43
MT4	800	3800	0.005	32	40	68.5		RHM-42175	£559.55
MT5	2000	3000	0.005	40	49.5	88.5		RHM-42843	£606.04
MT6	3500	2600	0.008	50	57	102.5		RHM-43532	£1,209.40
MT1	80	7000	0.01	15	27	34.5	Extended	RHM-58668	£297.57
MT2	140	7000	0.005	20	34	43		RHM-58669	£360.39
MT3	400	5000	0.005	25	47	58.5		RHM-58670	£440.02
MT4	500	3800	0.005	32	53	68.5		RHM-58671	£657.60
MT5	1200	3000	0.005	40	64	88.5		RHM-58672	£726.17
MT6	2500	2600	0.01	50	78	102.5		RHM-58673	£1,198.07
MT2	100	7000	0.005	20	34	43	Profiled	RHM-1241689	£346.61
MT3	150	5000	0.005	25	47	58.5		RHM-1241691	£424.62
MT4	180	3800	0.005	32	53	68.5		RHM-1241693	£484.80
MT5	280	3000	0.005	40	64	88.5		RHM-1241694	£699.89

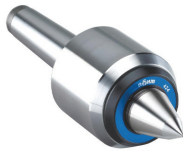


HEAVY DUTY LIVE CENTRE

- Robust 4-fold precision bearing for high speeds as well as high axial and radial loads
- Reliable and safe support of heavy workpieces
- Extended 60° nose
- Lifetime lubrication for minimum required maintenance



Extended



Morse Taper	Max kg	Max RPM	Run Out	Nose Dia	Nose Length	Body Dia	Order Code	Net Price
4	1000	7000		32	44.5	70	RHM-303598	£862.61
5	2000	6000	0.005	42	59.5	95	RHM-303599	£1,248.23
6	3000	4800		58	76	120	RHM-301696	£2,502.03



PRO DESIGN STANDARD LIVE CENTRE

With Cylindrical Shank

- High quality universal live centre
- Standard 60° nose



Stub



Shank Dia	Max kg	Max RPM	Run Out	Nose Dia	Nose Length	Body Dia	Order Code	Net Price
20	130	7000		20	24	43	RHM-1316054	£299.80
25	200	5000	0.005	25	30.5	48.5	RHM-1316055	£367.78
30	400	3800		32	40	68.5	RHM-1316056	£420.17



HEAVY DUTY LIVE CENTRE WITH DRAW OFF NUT

- Standard 60° nose



Stub



MT	Max kg	Max RPM	Run Out	Nose Dia	Nose Length	Body Dia	Order Code	Net Price
1	100	5000	0.008	15	17	38	800002547	£119.70
2	180	5000	0.008	18	21.5	40	800002549	£129.15
3	450	4000	0.008	25	27.5	56	800002551	£160.65
4	1000	3000	0.008	32	33.5	64	800002553	£198.45
5	1900	2500	0.010	40	44	85	800002555	£318.15
6	3700	2000	0.010	62.4	64	130	800002557	£657.30

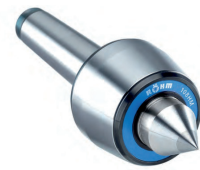


PRO DESIGN CARBIDE TIPPED LIVE CENTRE

- High quality universal live centre with carbide point for extra durability
- Standard 60° nose
- Lifetime lubrication for minimum required maintenance



Stub



Morse Taper	Max kg	Max RPM	Run Out	Nose Dia	Nose Length	Body Dia	Order Code	Net Price
2	120	7000	0.005	20	24	43	RHM-32140	£495.95
3	240	6300	0.005	22	27	48.5	RHM-90089	£516.01
3	360	5000	0.005	25	30.5	58.5	RHM-237413	£604.05
4	500	3800	0.005	32	40	68.5	RHM-93306	£689.87
5	1000	3000	0.005	40	49.5	88.5	RHM-221016	£998.59
6	1800	2800	0.01	50	57	102.5	RHM-221017	£2,000.50



BULL NOSED LIVE CENTRE

8825 Series

- Suitable for pipe turning



MT	Max kg	Max RPM	Run Out	Nose Length	Min Dia	Max Dia	Angle	Order Code	Net Price
1	100	5000	0.008	35	20	50		800002598	£114.45
2	180	5000	0.008	35	30	60		800002599	£134.40
3	350	4500	0.008	53	30	80		800002601	£189.00
3	550	3000	0.008	61	40	100		800002602	£228.90
3	600	3000	0.008	70	50	120		800002603	£260.40
4	600	3000	0.008	61	40	100	60°	800002604	£208.95
4	700	3000	0.008	70	50	120		800002605	£280.35
4	700	3000	0.01	70	70	140		800002606	£312.90
5	750	3000	0.01	70	50	120		800002607	£332.85
5	750	2000	0.02	70	100	170		800002608	£354.90
6	2000	1000	0.05	107	180	292		800002609	£1,245.30



LIVE CENTRE KIT WITH INTERCHANGEABLE INSERTS

8261 Series

- Live centre kits with 6 interchangeable inserts including: 60°, 75°, 90°, 30° extended nose, hollow bull nose and female 60°



MT	Max kg	Max RPM	Run Out	Order Code	Net Price
2	70	5000	0.01	800002610	£288.75
3	120	4000	0.01	800002612	£312.90
4	280	3000	0.01	800002614	£390.60
5	650	2500	0.015	800002616	£622.65
6	1200	2000	0.015	800002618	£1,141.35



CARBIDE TIPPED DEAD CENTRE

8711 Series

- 60° solid centre



MT	Length	Body Dia	Order Code			Net Price
			Bison	Net Price	Orion	
1	80	12.2	8711-1	£34.65	-	-
2	100	18	8711-2	£35.70	22107020	£27.31
3	125	24.1	8711-3	£54.60	22107030	£31.71
4	160	31.6	8711-4	£80.85	22107040	£41.46
5	200	44.7	8711-5	£126.00	22107050	£65.30
6	270	63.8	8711-6	£193.20	-	-



STEEL TIPPED DEAD CENTRE

8712 Series

- 60° solid centre



MT	Length	Body Dia	Order Code			Net Price
			Bison	Net Price	Orion	
1	80	12.2	8712-1	£17.01	-	-
2	100	18	8712-2	£18.38	22104020	£17.88
3	125	24.1	8712-3	£25.20	22104030	£19.34
4	160	31.6	8712-4	£39.90	22104040	£18.92
5	200	44.7	8712-5	£71.40	22104050	£33.60
6	270	63.8	8712-6	£157.50	-	-

LATHE CENTRES



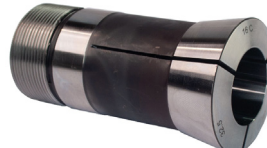
5C COLLETS ROUND OR HEXAGON BORE

- 5C type collet
- Round or hexagon smooth bore
- Specific diameter clamping
- Suitable for 1st and 2nd operation work



16C COLLETS ROUND OR HEXAGON BORE

- 16C type collet
- Round or hexagon smooth bore
- Specific diameter clamping
- Suitable for 1st and 2nd operation work



LATHE COLLETS - 5C & 16C

Clamping Diameter	Outside Diameter	Length	Order Code			
			Round	Net Price	Hexagon	Net Price
Metric						
Emergency	37.5	83	CP-1900052	£40.00	-	-
1			5C-R-1MM	-	-	-
1.5			5C-R-1.5MM	-	-	-
2			5C-R-2MM	-	-	-
2.5			5C-R-2.5MM	-	-	-
3			5C-R-3MM	-	-	-
3.5			5C-R-3.5MM	-	-	-
4			5C-R-4MM	-	5C-H-4MM	£21.40
4.5			5C-R-4.5MM	-	-	-
5			5C-R-5MM	-	5C-H-5MM	£21.40
5.5			5C-R-5.5MM	-	-	-
6			5C-R-6MM	-	5C-H-6MM	£21.40
6.5			5C-R-6.5MM	-	-	-
7			5C-R-7MM	-	-	-
7.5			5C-R-7.5MM	-	-	-
8			5C-R-8MM	-	5C-H-8MM	£21.40
8.5			5C-R-8.5MM	-	-	-
9			5C-R-9MM	-	-	-
9.5			5C-R-9.5MM	-	-	-
10			5C-R-10MM	-	5C-H-10MM	£21.40
10.5			5C-R-10.5MM	-	-	-
11			5C-R-11MM	-	5C-H-11MM	£21.40
11.5			5C-R-11.5MM	-	-	-
12			5C-R-12MM	-	5C-H-12MM	£21.40
12.5	37.5	83	5C-R-12.5MM	£11.92	-	-
13			5C-R-13MM	-	5C-H-13MM	£21.40
13.5			5C-R-13.5MM	-	-	-
14			5C-R-14MM	-	5C-H-14MM	£21.40
14.5			5C-R-14.5MM	-	-	-
15			5C-R-15MM	-	5C-H-15MM	£21.40
15.5			5C-R-15.5MM	-	-	-
16			5C-R-16MM	-	5C-H-16MM	£21.40
16.5			5C-R-16.5MM	-	-	-
17			5C-R-17MM	-	5C-H-17MM	£21.40
17.5			5C-R-17.5MM	-	-	-
18			5C-R-18MM	-	5C-H-18MM	£21.40
18.5			5C-R-18.5MM	-	-	-
19			5C-R-19MM	-	5C-H-19MM	£21.40
19.5			5C-R-19.5MM	-	-	-
20			5C-R-20MM	-	5C-H-20MM	£21.40
21			5C-R-21MM	-	-	-
22			5C-R-22MM	-	-	-
23			5C-R-23MM	-	-	-
24			5C-R-24MM	-	-	-
25			5C-R-25MM	-	-	-
26			5C-R-26MM	-	-	-
27			5C-R-27MM	-	-	-
28			5C-R-28MM	-	-	-
Imperial						
1/8"			5C-R-1/8	-	5C-H-1/8	-
3/16"			5C-R-3/16	-	5C-H-3/16	-
1/4"			5C-R-1/4	-	5C-H-1/4	-
5/16"			5C-R-5/16	-	5C-H-5/16	-
3/8"			5C-R-3/8	-	5C-H-3/8	-
7/16"			5C-R-7/16	-	5C-H-7/16	£21.40
1/2"	37.5	83	5C-R-1/2	£11.92	5C-H-1/2	-
9/16"			5C-R-9/16	-	5C-H-9/16	-
5/8"			5C-R-5/8	-	5C-H-5/8	-
11/16"			5C-R-11/16	-	5C-H-11/16	-
3/4"			5C-R-3/4	-	5C-H-3/4	-
7/8"			5C-R-7/8	-	-	-
1"			5C-R-1	-	-	-

Clamping Diameter	Outside Diameter	Length	Order Code			
			Round	Net Price	Hexagon	Net Price
Metric						
Emergency	57.5	110.5	16C-EM-COLLET	£63.10	-	-
2			16C-R-2MM	-	-	-
2.5			16C-R-2.5MM	-	-	-
3			16C-R-3MM	-	-	-
3.5			16C-R-3.5MM	-	-	-
4			16C-R-4MM	-	16C-H-4MM	£85.58
4.5			16C-R-4.5MM	-	-	-
5			16C-R-5MM	-	16C-H-5MM	£85.58
5.5			16C-R-5.5MM	-	-	-
6			16C-R-6MM	-	16C-H-6MM	£85.58
6.5			16C-R-6.5MM	-	-	-
7			16C-R-7MM	-	-	-
7.5			16C-R-7.5MM	-	-	-
8			16C-R-8MM	-	16C-H-8MM	£85.58
8.5			16C-R-8.5MM	-	-	-
9			16C-R-9MM	-	-	-
9.5			16C-R-9.5MM	-	-	-
10			16C-R-10MM	-	16C-H-10MM	£85.58
11			16C-R-11MM	-	-	-
12			16C-R-12MM	-	16C-H-12MM	£85.58
13			16C-R-13MM	-	-	-
14			16C-R-14MM	-	16C-H-14MM	£85.58
15			16C-R-15MM	-	-	-
16			16C-R-16MM	-	16C-H-16MM	£85.58
17	57.5	110.5	16C-R-17MM	£46.49	-	-
18			16C-R-18MM	-	16C-H-18MM	£85.58
19			16C-R-19MM	-	-	-
20			16C-R-20MM	-	16C-H-20MM	£85.58
21			16C-R-21MM	-	-	-
22			16C-R-22MM	-	-	-
23			16C-R-23MM	-	-	-
24			16C-R-24MM	-	-	-
25			16C-R-25MM	-	16C-H-25MM	£85.58
26			16C-R-26MM	-	-	-
27			16C-R-27MM	-	-	-
28			16C-R-28MM	-	-	-
29			16C-R-29MM	-	-	-
30			16C-R-30MM	-	16C-H-30MM	£85.58
31			16C-R-31MM	-	-	-
32			16C-R-32MM	-	-	-
33			16C-R-33MM	-	-	-
34			16C-R-34MM	-	-	-
35			16C-R-35MM	-	16C-H-35MM	£85.58
36			16C-R-36MM	-	-	-
37			16C-R-37MM	-	-	-
38			16C-R-38MM	-	-	-
39			16C-R-39MM	-	-	-
40			16C-R-40MM	-	-	-
Imperial						
1/4"			16C-R-1/4	-	-	-
5/16"			16C-R-5/16	-	-	-
3/8"			16C-R-3/8	-	-	-
7/16"			16C-R-7/16	-	-	-
1/2"			16C-R-1/2	-	-	-
9/16"	57.5	110.5	16C-R-9/16	£46.49	-	-
5/8"			16C-R-5/8	-	-	-
11/16"			16C-R-11/16	-	-	-
3/4"			16C-R-3/4	-	-	-
7/8"			16C-R-7/8	-	-	-
1"			16C-R-1	-	-	-





5C MANUAL COLLET CHUCK

- Suitable for 5C collets (1-28mm clamping range)
- Wrench operated scroll provides uniform, distortion free clamping
- Low profile small nose diameter
- Front mount with recessed back
- Can be used for turning, facing, boring, grinding and milling



16C MANUAL COLLET CHUCK

- Suitable for 16C collets (2-42mm clamping range)
- Wrench operated scroll provides uniform, distortion free clamping
- Low profile small nose diameter
- Front mount with recessed back
- Can be used for turning, facing, boring, grinding and milling



Mount	Outside Dia	Length	Clamping Range	Collets	Order Code	Net Price
Front	125	117	1-28	5C	3975-125-5C	£1,472.10

Mount	Outside Dia	Length	Clamping Range	Collets	Order Code	Net Price
Front	140	114.5	2-42	16C	3975-140-16C	£1,930
	160				3975-160-16C	£2,130.45



5C POWER COLLET CHUCK

- Suitable for 5C collets (1-28mm clamping range)
- Power (hydraulic) operated
- Pull back style
- Low profile small nose diameter
- Direct mount: Supplied with mounting bolts and a custom machined drawtube connector allowing you to use straight out of the box



16C POWER COLLET CHUCK

- Suitable for 16C collets (2-42mm clamping range)
- Power (hydraulic) operated
- Pull back style
- Low profile small nose diameter
- Direct mount: Supplied with mounting bolts and a custom machined drawtube connector allowing you to use straight out of the box



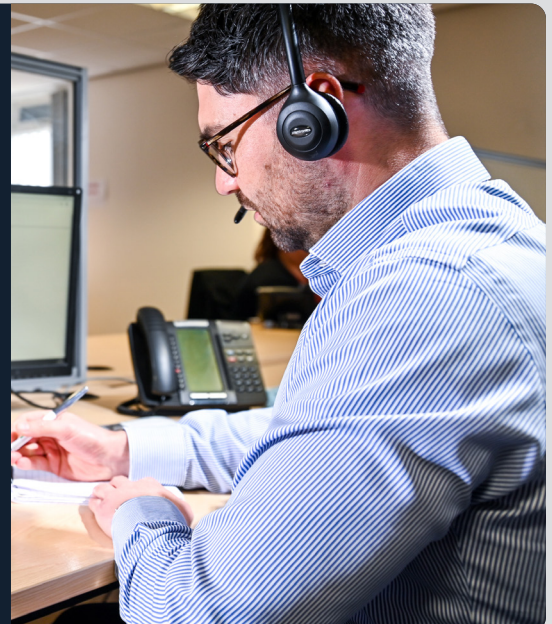
Mount	Nose Dia	Length	Max RPM	Clamping Range	Collets	Order Code	Net Price
Z140		139				DEL5C-Z140	£871.55
A5	72	139	6000	1-28	5C	DEL5C-A5	£959.62
A6		141				DEL5C-A6	£906.50

Mount	Nose Dia	Length	Max RPM	Clamping Range	Collets	Order Code	Net Price
Z140		157				DEL16C-Z170	£1,054.35
A5	85	152	6000	2-42	16C	DEL16C-A5	£1,080.50
A6		160				DEL16C-A6	£1,080.50

Expert guidance from engineers who understand real machining pressure

Our UK based technical engineers are here to help you overcome tooling or machining challenges, increase output and achieve reliable, repeatable results.

Call on 01924 869615



LATHE COLLETS - 5C & 16C



TYPE M673 CRAWFORD STYLE MULTIBORE COLLETS ROUND OR HEXAGON BORE

- M673 / DIN 6343 collet with 2mm gripping range
- With serrated bores, ideal for first operation or roughing work
- Compatible with TYPE 173E spring collets



Clamping Range	Outside Diameter	Length	Order Code			Net Price
			Round	Net Price	Hexagon	
4-6			MT673-060	£183.60	MT673-060HEX	
6-8			MT673-080	£112.62	MT673-080HEX	
8-10			MT673-100	£112.62	MT673-100HEX	
10-12			MT673-120	£112.62	MT673-120HEX	
12-14			MT673-140	£112.62	MT673-140HEX	
14-16			MT673-160	£112.62	MT673-160HEX	
16-18			MT673-180	£112.62	MT673-180HEX	
18-20			MT673-200	£112.62	MT673-200HEX	
20-22			MT673-220	£112.62	MT673-220HEX	£178.04
22-24	61.5	39	MT673-240	£112.62	MT673-240HEX	
24-26			MT673-260	£112.62	MT673-260HEX	
26-28			MT673-280	£112.62	MT673-280HEX	
28-30			MT673-300	£112.62	MT673-300HEX	
30-32			MT673-320	£112.62	MT673-320HEX	
32-34			MT673-340	£112.62	MT673-340HEX	
34-36			MT673-360	£112.62	MT673-360HEX	
36-38			MT673-380	£137.50	MT673-380HEX	
38-40			MT673-400	£137.50	-	-
40-42			MT673-420	£137.50	-	-



TYPE M677 CRAWFORD STYLE MULTIBORE COLLETS ROUND OR HEXAGON BORE

- M677 / DIN 6343 collet with 2mm gripping range
- With serrated bores, ideal for first operation or roughing work
- Compatible with type 185E spring collets



Clamping Range	Outside Diameter	Length	Order Code			Net Price
			Round	Net Price	Hexagon	
4-6			MT677-060		MT677-060HEX	
6-8			MT677-080		MT677-080HEX	
8-10			MT677-100		MT677-100HEX	
10-12			MT677-120		MT677-120HEX	
12-14			MT677-140		MT677-140HEX	
14-16			MT677-160		MT677-160HEX	
16-18			MT677-180		MT677-180HEX	
18-20			MT677-200		MT677-200HEX	
20-22			MT677-220		MT677-220HEX	
22-24			MT677-240		MT677-240HEX	
24-26			MT677-260		MT677-260HEX	
26-28			MT677-280		MT677-280HEX	
28-30			MT677-300		MT677-300HEX	£198.00
30-32			MT677-320	£169.93	MT677-320HEX	
32-34	85.5	45	MT677-340		MT677-340HEX	
34-36			MT677-360		MT677-360HEX	
36-38			MT677-380		MT677-380HEX	
38-40			MT677-400		MT677-400HEX	
40-42			MT677-420		MT677-420HEX	
42-44			MT677-440		MT677-440HEX	
44-46			MT677-460		MT677-460HEX	
46-48			MT677-480		MT677-480HEX	
48-50			MT677-500		MT677-500HEX	
50-52			MT677-520		MT677-520HEX	
52-54			MT677-540		-	-
54-56			MT677-560		-	-
56-58			MT677-580		-	-
58-60			MT677-600		-	-



TYPE 173E CRAWFORD STYLE SPRING COLLETS - ROUND OR HEXAGON BORE

- Type 173E / DIN 6343 high precision collet for specific diameter clamping
- Compatible with M673 multi-bore collets
- **Round bore collets:** Smooth <8mm, serrated bore from 8.5mm
- **Hex bore collets:** Smooth <12mm, serrated bore from 13mm



Clamping Diameter	Outside Diameter	Length	Order Code		
			Round	Net Price	Hexagon
1			173E-R-010	-	-
1.5			173E-R-015	-	-
2			173E-R-020	-	-
2.5			173E-R-025	-	-
3			173E-R-030	-	-
3.5			173E-R-035	-	-
4			173E-R-040	173E-H-040	£79.76
4.5			173E-R-045	-	-
5			173E-R-050	173E-H-050	£79.76
5.5			173E-R-055	-	-
6			173E-R-060	173E-H-060	£79.76
6.5			173E-R-065	-	-
7			173E-R-070	173E-H-070	£79.76
7.5			173E-R-075	-	-
8			173E-R-080	173E-H-080	£79.76
8.5			173E-R-085	-	-
9			173E-R-090	173E-H-090	£79.76
9.5			173E-R-095	-	-
10			173E-R-100	173E-H-100	£79.76
10.5			173E-R-105	-	-
11			173E-R-110	173E-H-110	£79.76
11.5			173E-R-115	-	-
12			173E-R-120	173E-H-120	£79.76
12.5			173E-R-125	-	-
13			173E-R-130	173E-H-130	£79.76
13.5			173E-R-135	-	-
14			173E-R-140	173E-H-140	£79.76
14.5			173E-R-145	-	-
15			173E-R-150	173E-H-150	£79.76
15.5			173E-R-155	-	-
16			173E-R-160	173E-H-160	£79.76
16.5			173E-R-165	-	-
17			173E-R-170	173E-H-170	£79.76
17.5			173E-R-175	-	-
18			173E-R-180	173E-H-180	£79.76
18.5			173E-R-185	-	-
19			173E-R-190	173E-H-190	£79.76
19.5			173E-R-195	-	-
20			173E-R-200	173E-H-200	£79.76
20.5			173E-R-205	-	-
21			173E-R-210	173E-H-210	£79.76
21.5	60	94	173E-R-215	£69.44	-
22			173E-R-220	173E-H-220	£79.76
22.5			173E-R-225	-	-
23			173E-R-230	-	-
23.5			173E-R-235	-	-
24			173E-R-240	173E-H-240	£79.76
24.5			173E-R-245	-	-
25			173E-R-250	-	-
25.5			173E-R-255	-	-
26			173E-R-260	-	-
26.5			173E-R-265	-	-
27			173E-R-270	173E-H-270	£79.76
27.5			173E-R-275	-	-
28			173E-R-280	-	-
28.5			173E-R-285	-	-
29			173E-R-290	-	-
29.5			173E-R-295	-	-
30			173E-R-300	173E-H-300	£79.76
30.5			173E-R-305	-	-
31			173E-R-310	-	-
31.5			173E-R-315	-	-
32			173E-R-320	173E-H-320	£79.76
32.5			173E-R-325	-	-
33			173E-R-330	-	-
33.5			173E-R-335	-	-
34			173E-R-340	-	-
34.5			173E-R-345	-	-
35			173E-R-350	-	-
35.5			173E-R-355	-	-
36			173E-R-360	173E-H-360	£79.76
36.5			173E-R-365	-	-
37			173E-R-370	-	-
37.5			173E-R-375	-	-
38			173E-R-380	-	-
38.5			173E-R-385	-	-
39			173E-R-390	-	-
39.5			173E-R-395	-	-
40			173E-R-400	-	-
40.5			173E-R-405	-	-
41			173E-R-410	-	-
41.5			173E-R-415	-	-
42			173E-R-420	-	-

LATHE COLLETS - CRAWFORD STYLE





TYPE 185E CRAWFORD STYLE SPRING COLLETS - ROUND OR HEXAGON BORE

- Type 185E / DIN 6343 high precision collet for specific diameter clamping
- Compatible with M677 multi-bore collets
- **Round bore collets:** Smooth <8mm, serrated bore from 8.5mm
- **Hex bore collets:** Smooth <12mm, serrated bore from 13mm



Clamping Diameter	Outside Diameter	Length	Order Code			
			Round	Net Price	Hexagon	Net Price
3			185E-R-030	£94.35	-	-
4			185E-R-040	£94.35	-	-
5			185E-R-050	£94.35	-	-
6			185E-R-060	£94.35	-	-
7			185E-R-070	£94.35	-	-
8			185E-R-080	£94.35	185E-H-080	£128.58
9			185E-R-090	£94.35	185E-H-090	£128.58
10			185E-R-100	£94.35	185E-H-100	£128.58
11			185E-R-110	£94.35	185E-H-110	£128.58
12			185E-R-120	£94.35	185E-H-120	£128.58
13			185E-R-130	£94.35	185E-H-130	£128.58
14			185E-R-140	£94.35	185E-H-140	£128.58
15			185E-R-150	£94.35	185E-H-150	£128.58
16			185E-R-160	£94.35	185E-H-160	£128.58
17			185E-R-170	£94.35	185E-H-170	£128.58
18			185E-R-180	£94.35	-	-
19			185E-R-190	£94.35	185E-H-190	£128.58
20			185E-R-200	£94.35	-	-
21			185E-R-210	£94.35	-	-
22			185E-R-220	£94.35	185E-H-220	£128.58
23			185E-R-230	£94.35	-	-
24			185E-R-240	£94.35	185E-H-240	£128.58
25			185E-R-250	£94.35	-	-
26			185E-R-260	£94.35	-	-
27			185E-R-270	£94.35	185E-H-270	£128.58
28			185E-R-280	£94.35	-	-
29			185E-R-290	£94.35	-	-
30			185E-R-300	£94.35	185E-H-300	£128.58
31	84	110	185E-R-310	£94.35	-	-
32			185E-R-320	£94.35	185E-H-320	£128.58
33			185E-R-330	£94.35	-	-
34			185E-R-340	£94.35	-	-
35			185E-R-350	£94.35	185E-H-350	£128.58
36			185E-R-360	£94.35	185E-H-360	£128.58
37			185E-R-370	£94.35	-	-
38			185E-R-380	£94.35	185E-H-380	£128.58
39			185E-R-390	£94.35	185E-H-390	£128.58
40			185E-R-400	£94.35	-	-
41			185E-R-410	£94.35	185E-H-410	£128.58
42			185E-R-420	£94.35	185E-H-420	£128.58
43			185E-R-430	£94.35	-	-
44			185E-R-440	£94.35	-	-
45			185E-R-450	£94.35	185E-H-450	£128.58
46			185E-R-460	£94.35	185E-H-460	£128.58
47			185E-R-470	£94.35	-	-
48			185E-R-480	£94.35	-	-
49			185E-R-490	£94.35	-	-
50			185E-R-500	£94.35	185E-H-500	£128.58
51			185E-R-510	£94.35	-	-
52			185E-R-520	£94.35	-	-
53			185E-R-530	£94.35	-	-
54			185E-R-540	£94.35	-	-
55			185E-R-550	£94.35	-	-
56			185E-R-560	£94.35	-	-
57			185E-R-570	£94.35	-	-
58			185E-R-580	£94.35	-	-
59			185E-R-590	£94.35	-	-
60			185E-R-600	£94.35	-	-



TYPE 173E CRAWFORD STYLE SPRING COLLETS - SQUARE BORE

- Type 173E / DIN 6343 high precision collet for specific diameter clamping
- Compatible with M673 multi-bore collets
- **Square bore collets:** Smooth <12mm, serrated bore from 13mm



Clamping Diameter	Outside Diameter	Length	Order Code	Net Price
4			173E-S-040	
5			173E-S-050	
6			173E-S-060	
7			173E-S-070	
8			173E-S-080	
9			173E-S-090	
10			173E-S-100	
11			173E-S-110	
12			173E-S-120	
13			173E-S-130	
14			173E-S-140	
15	60	94	173E-S-150	£79.96
16			173E-S-160	
17			173E-S-170	
18			173E-S-180	
19			173E-S-190	
20			173E-S-200	
22			173E-S-220	
24			173E-S-240	
25			173E-S-250	
26			173E-S-260	
28			173E-S-280	
30			173E-S-300	



TYPE 185E CRAWFORD STYLE SPRING COLLETS - SQUARE BORE

- Type 185E / DIN 6343 high precision collet for specific diameter clamping
- Compatible with M677 multi-bore collets
- **Square bore collets:** smooth <12mm, serrated bore from 13mm



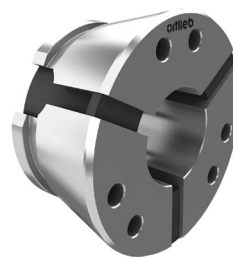
Clamping Diameter	Outside Diameter	Length	Order Code	Net Price
4			185E-S-040	
5			185E-S-050	
6			185E-S-060	
7			185E-S-070	
8			185E-S-080	
9			185E-S-090	
10			185E-S-100	
11			185E-S-110	
12			185E-S-120	
13			185E-S-130	
14	84	110	185E-S-140	£100.28
15			185E-S-150	
16			185E-S-160	
20			185E-S-200	
22			185E-S-220	
24			185E-S-240	
25			185E-S-250	
28			185E-S-280	
30			185E-S-300	
32			185E-S-320	
36			185E-S-360	

LATHE COLLETS - CRAWFORD STYLE



SIZE 32 WORKHOLDING COLLETS SUITABLE FOR HAINBUCH COLLET CHUCKS

- Smooth bores
- Round geometry
- Run-out accuracy ≤ 0.01 mm possible
- Clamping range of +/-0.5mm



*Emergency collets available in 5mm, 10mm, 20mm.

Collet Size	Nominal Size	Clamping Range	Order Code		Net Price	
			Round	Smooth		
32	Emergency Collet	-	T0032WR0_000G*		£238.06	
	4	3.5 - 4.5	T0032R004000G		£192.34	
	5	4.5 - 5.5	T0032R005000G			
	6	5.5 - 6.5	T0032R006000G			
	7	6.5 - 7.5	T0032R007000G			
	8	7.5 - 8.5	T0032R008000G			
	9	8.5 - 9.5	T0032R009000G			
	10	9.5 - 10.5	T0032R010000G			
	11	10.5 - 11.5	T0032R011000G			
	12	11.5 - 12.5	T0032R012000G			
	13	12.5 - 13.5	T0032R013000G			
	14	13.5 - 14.5	T0032R014000G			
	15	14.5 - 15.5	T0032R015000G			
	16	15.5 - 16.5	T0032R016000G			
	17	16.5 - 17.5	T0032R017000G			
	32	18	17.5 - 18.5	T0032R018000G		
		19	18.5 - 19.5	T0032R019000G		
20		19.5 - 20.5	T0032R020000G			
21		20.5 - 21.5	T0032R021000G			
22		21.5 - 22.5	T0032R022000G			
23		22.5 - 23.5	T0032R023000G			
24		23.5 - 24.5	T0032R024000G			
25		24.5 - 25.5	T0032R025000G			
26		25.5 - 26.5	T0032R026000G			
27		26.5 - 27.5	T0032R027000G			
28		27.5 - 28.5	T0032R028000G			
29		28.5 - 29.5	T0032R029000G			
30		29.5 - 30.5	T0032R030000G			
31		30.5 - 31.5	T0032R031000G			
32		31.5 - 32.5	T0032R032000G			

LATHE COLLETS - HAINBUCH COMPATIBLE



QUICK CHANGE GUNS FOR WORKHOLDING COLLETS

- Easy handling due to concentric force transmission
- Robust and contemporary design
- Compatible with Hainbuch, Rohm, Klamp and other quick change collets (except size 80 collets which are only compatible with ORTLIEB collets)



TURNING FIXTURES FOR EMERGENCY WORKHOLDING COLLETS

- Turning fixtures for modifying the clamping diameter of emergency collets
- Compatible with Hainbuch, Rohm, Klamp and other quick change collets (except size 80 collets which are only compatible with ORTLIEB collets)



Collet Size	Order Code	Net Price
32	036996100	£402.86
42	036996200	£402.86
52	036996300	£409.41
65	036996400	£409.41
80	036997100	£467.42

Collet Size	Order Code	Net Price
32	S416703	£106.09
42	S416701	£110.33
52	S416706	£154.17
65	S416700	£173.14
80	S416704	£199.45



**SIZE 42 WORKHOLDING COLLETS
SUITABLE FOR HAINBUCH COLLET CHUCKS**

- Smooth or serrated bores
- Round, hexagon or square geometries
- Run-out accuracy ≤ 0.01 mm possible
- Clamping range of +/-0.5mm



*Emergency collets available in 5mm, 15mm, 32mm.

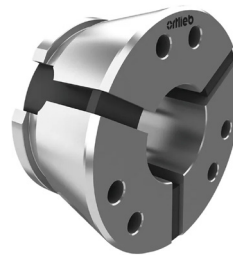
Collet Size	Nominal Size	Clamping Range	Round Serrated	Net Price	Round Smooth	Order Code				
						Net Price	Hexagon Serrated	Net Price	Square Serrated	Net Price
42	Emergency Collet	-	-	-	T0042WRO_000G*	£221.35	-	-	-	-
	4	3.5 - 4.5	-	-	T0042R004000G	-	-	-	-	-
	4.5	4 - 5	-	-	T0042R004500G	-	-	-	-	-
	5	4.5 - 5.5	-	-	T0042R005000G	-	-	-	-	-
	5.5	5 - 6	-	-	T0042R005500G	-	-	-	-	-
	6	5.5 - 6.5	-	-	T0042R006000G	-	-	-	-	-
	6.5	6 - 7	-	-	T0042R006500G	-	-	-	-	-
	7	6.5 - 7.5	-	-	T0042R007000G	-	-	-	-	-
	7.5	7 - 8	-	-	T0042R007500G	-	-	-	-	-
	8	7.5 - 8.5	T0042R008000Q	-	T0042R008000G	-	T0042S008000Q	£336.36	T0042V008000Q	£336.36
	8.5	8 - 9	T0042R008500Q	-	T0042R008500G	-	-	-	-	-
	9	8.5 - 9.5	T0042R009000Q	-	T0042R009000G	-	T0042S009000Q	£336.36	T0042V009000Q	£336.36
	9.5	9 - 10	T0042R009500Q	-	T0042R009500G	-	-	-	-	-
	10	9.5 - 10.5	T0042R010000Q	-	T0042R010000G	-	T0042S010000Q	£336.36	T0042V010000Q	£336.36
	10.5	10 - 11	T0042R010500Q	-	T0042R010500G	-	-	-	-	-
	11	10.5 - 11.5	T0042R011000L	-	T0042R011000G	-	T0042S011000Q	£336.36	T0042V011000Q	£336.36
	11.5	11 - 12	T0042R011500L	-	T0042R011500G	-	-	-	-	-
	12	11.5 - 12.5	T0042R012000L	-	T0042R012000G	-	T0042S012000Q	£336.36	T0042V012000Q	£336.36
	12.5	12 - 13	T0042R012500L	-	T0042R012500G	-	-	-	-	-
	13	12.5 - 13.5	T0042R013000L	-	T0042R013000G	-	T0042S013000Q	£336.36	T0042V013000Q	£336.36
	13.5	13 - 14	T0042R013500L	-	T0042R013500G	-	-	-	-	-
	14	13.5 - 14.5	T0042R014000L	-	T0042R014000G	-	T0042S014000Q	£336.36	T0042V014000Q	£336.36
	14.5	14 - 15	T0042R014500L	-	T0042R014500G	-	-	-	-	-
	15	14.5 - 15.5	T0042R015000L	-	T0042R015000G	-	T0042S015000Q	£336.36	T0042V015000Q	£336.36
	15.5	15 - 16	T0042R015500L	-	T0042R015500G	-	-	-	-	-
	16	15.5 - 16.5	T0042R016000L	-	T0042R016000G	-	T0042S016000Q	£336.36	T0042V016000Q	£336.36
	16.5	16 - 17	T0042R016500L	-	T0042R016500G	-	-	-	-	-
	17	16.5 - 17.5	T0042R017000L	-	T0042R017000G	-	T0042S017000Q	£336.36	T0042V017000Q	£336.36
	17.5	17 - 18	T0042R017500L	-	T0042R017500G	-	-	-	-	-
	18	17.5 - 18.5	T0042R018000L	-	T0042R018000G	-	T0042S018000Q	£336.36	T0042V018000Q	£336.36
	18.5	18 - 19	T0042R018500L	-	T0042R018500G	-	-	-	-	-
	19	18.5 - 19.5	T0042R019000L	-	T0042R019000G	-	T0042S019000Q	£336.36	T0042V019000Q	£336.36
	19.5	19 - 20	T0042R019500L	-	T0042R019500G	-	-	-	-	-
	20	19.5 - 20.5	T0042R020000L	-	T0042R020000G	-	T0042S020000Q	£336.36	T0042V020000Q	£336.36
	20.5	20 - 21	T0042R020500L	-	T0042R020500G	-	-	-	-	-
	21	20.5 - 21.5	T0042R021000L	-	T0042R021000G	-	T0042S021000Q	£336.36	T0042V021000Q	£336.36
	21.5	21 - 22	T0042R021500L	-	T0042R021500G	-	-	-	-	-
	22	21.5 - 22.5	T0042R022000L	-	T0042R022000G	-	T0042S022000Q	£336.36	T0042V022000Q	£336.36
	22.5	22 - 23	T0042R022500L	-	T0042R022500G	-	-	-	-	-
42	23	22.5 - 23.5	T0042R023000L	-	T0042R023000G	£173.44	T0042S023000Q	£336.36	T0042V023000Q	£336.36
	23.5	23 - 24	T0042R023500L	-	T0042R023500G	-	-	-	-	-
	24	23.5 - 24.5	T0042R024000L	-	T0042R024000G	-	T0042S024000Q	£336.36	T0042V024000Q	£336.36
	24.5	24 - 25	T0042R024500L	-	T0042R024500G	-	-	-	-	-
	25	24.5 - 25.5	T0042R025000L	£173.44	T0042R025000G	-	T0042S025000Q	£336.36	T0042V025000Q	£336.36
	25.5	25 - 26	T0042R025500L	-	T0042R025500G	-	-	-	-	-
	26	25.5 - 26.5	T0042R026000L	-	T0042R026000G	-	T0042S026000Q	£336.36	T0042V026000Q	£336.36
	26.5	26 - 27	T0042R026500L	-	T0042R026500G	-	-	-	-	-
	27	26.5 - 27.5	T0042R027000L	-	T0042R027000G	-	T0042S027000Q	£336.36	T0042V027000Q	£336.36
	27.5	27 - 28	T0042R027500L	-	T0042R027500G	-	-	-	-	-
	28	27.5 - 28.5	T0042R028000L	-	T0042R028000G	-	T0042S028000Q	£336.36	-	-
	28.5	28 - 29	T0042R028500L	-	T0042R028500G	-	-	-	-	-
	29	28.5 - 29.5	T0042R029000L	-	T0042R029000G	-	T0042S029000Q	£336.36	-	-
	29.5	29 - 30	T0042R029500L	-	T0042R029500G	-	-	-	-	-
	30	29.5 - 30.5	T0042R030000L	-	T0042R030000G	-	T0042S030000Q	£336.36	-	-
	30.5	30 - 31	T0042R030500L	-	T0042R030500G	-	-	-	-	-
	31	30.5 - 31.5	T0042R031000L	-	T0042R031000G	-	T0042S031000Q	£336.36	-	-
	31.5	31 - 32	T0042R031500L	-	T0042R031500G	-	-	-	-	-
	32	31.5 - 32.5	T0042R032000L	-	T0042R032000G	-	T0042S032000Q	£336.36	-	-
	32.5	32 - 33	T0042R032500L	-	T0042R032500G	-	-	-	-	-
	33	32.5 - 33.5	T0042R033000L	-	T0042R033000G	-	T0042S033000Q	£336.36	-	-
	33.5	33 - 34	T0042R033500L	-	T0042R033500G	-	-	-	-	-
	34	33.5 - 34.5	T0042R034000L	-	T0042R034000G	-	T0042S034000Q	£336.36	-	-
	34.5	34 - 35	T0042R034500L	-	T0042R034500G	-	-	-	-	-
	35	34.5 - 35.5	T0042R035000L	-	T0042R035000G	-	T0042S035000Q	£381.14	-	-
	35.5	35 - 36	T0042R035500L	-	T0042R035500G	-	-	-	-	-
	36	35.5 - 36.5	T0042R036000L	-	T0042R036000G	-	T0042S036000Q	£381.14	-	-
	36.5	36 - 37	T0042R036500L	-	T0042R036500G	-	-	-	-	-
	37	36.5 - 37.5	T0042R037000L	-	T0042R037000G	-	-	-	-	-
	37.5	37 - 38	T0042R037500L	-	T0042R037500G	-	-	-	-	-
	38	37.5 - 38.5	T0042R038000L	-	T0042R038000G	-	-	-	-	-
	38.5	38 - 39	T0042R038500L	-	T0042R038500G	-	-	-	-	-
	39	38.5 - 39.5	T0042R039000L	-	T0042R039000G	-	-	-	-	-
	39.5	39 - 40	T0042R039500L	-	T0042R039500G	-	-	-	-	-
	40	39.5 - 40.5	T0042R040000L	-	T0042R040000G	-	-	-	-	-
	40.5	40 - 41	T0042R040500L	-	T0042R040500G	-	-	-	-	-
	41	40.5 - 41.5	T0042R041000L	-	T0042R041000G	-	-	-	-	-
	41.5	41 - 42	T0042R041500L	-	T0042R041500G	-	-	-	-	-
	42	41.5 - 42.5	T0042R042000L	-	T0042R042000G	-	-	-	-	-

LATHE COLLETS - HAINBUCH COMPATIBLE



SIZE 52 WORKHOLDING COLLETS SUITABLE FOR HAINBUCH COLLET CHUCKS

- Smooth or serrated bores
- Round, hexagon or square geometries
- Run-out accuracy ≤ 0.01 mm possible
- Clamping range of +/-0.5mm



*Emergency collets available in 8mm, 15mm, & 30mm.

Collet Size	Nominal Size	Clamping Range	Order Code					
			Round Serrated	Net Price	Round Smooth	Net Price	Hexagon Serrated	Net Price
52	Emergency Collet	-	-	-	T0052WRO_000G*	£260.88	-	-
52	4	3.5 - 4.5	-	-	T0052R004000G	-	-	-
	5	4.5 - 5.5	-	-	T0052R005000G	-	-	-
	6	5.5 - 6.5	-	-	T0052R006000G	-	-	-
	7	6.5 - 7.5	-	-	T0052R007000G	-	-	-
	8	7.5 - 8.5	T0052R008000Q	-	T0052R008000G	-	-	-
	9	8.5 - 9.5	T0052R009000Q	-	T0052R009000G	-	-	-
	10	9.5 - 10.5	T0052R010000Q	-	T0052R010000G	-	T0052S010000Q	-
	11	10.5 - 11.5	T0052R011000Q	-	T0052R011000G	-	T0052S011000Q	-
	12	11.5 - 12.5	T0052R012000L	-	T0052R012000G	-	T0052S012000Q	-
	13	12.5 - 13.5	T0052R013000L	-	T0052R013000G	-	T0052S013000Q	-
	14	13.5 - 14.5	T0052R014000L	-	T0052R014000G	-	T0052S014000Q	-
	15	14.5 - 15.5	T0052R015000L	-	T0052R015000G	-	T0052S015000Q	-
	16	15.5 - 16.5	T0052R016000L	-	T0052R016000G	-	T0052S016000Q	-
	17	16.5 - 17.5	T0052R017000L	-	T0052R017000G	-	T0052S017000Q	-
	18	17.5 - 18.5	T0052R018000L	-	T0052R018000G	-	T0052S018000Q	-
	19	18.5 - 19.5	T0052R019000L	-	T0052R019000G	-	T0052S019000Q	-
	20	19.5 - 20.5	T0052R020000L	-	T0052R020000G	-	T0052S020000Q	-
	21	20.5 - 21.5	T0052R021000L	-	T0052R021000G	-	T0052S021000Q	-
	22	21.5 - 22.5	T0052R022000L	-	T0052R022000G	-	T0052S022000Q	-
	23	22.5 - 23.5	T0052R023000L	-	T0052R023000G	-	T0052S023000Q	-
	24	23.5 - 24.5	T0052R024000L	-	T0052R024000G	-	T0052S024000Q	-
	25	24.5 - 25.5	T0052R025000L	-	T0052R025000G	-	T0052S025000Q	-
	26	25.5 - 26.5	T0052R026000L	-	T0052R026000G	-	T0052S026000Q	-
	27	26.5 - 27.5	T0052R027000L	-	T0052R027000G	-	T0052S027000Q	-
	28	27.5 - 28.5	T0052R028000L	-	T0052R028000G	£236.12	T0052S028000Q	£381.14
	29	28.5 - 29.5	T0052R029000L	-	T0052R029000G	-	T0052S029000Q	-
	30	29.5 - 30.5	T0052R030000L	£236.12	T0052R030000G	-	T0052S030000Q	-
	31	30.5 - 31.5	T0052R031000L	-	T0052R031000G	-	T0052S031000Q	-
	32	31.5 - 32.5	T0052R032000L	-	T0052R032000G	-	T0052S032000Q	-
	33	32.5 - 33.5	T0052R033000L	-	T0052R033000G	-	T0052S033000Q	-
	34	33.5 - 34.5	T0052R034000L	-	T0052R034000G	-	T0052S034000Q	-
	35	34.5 - 35.5	T0052R035000L	-	T0052R035000G	-	T0052S035000Q	-
	36	35.5 - 36.5	T0052R036000L	-	T0052R036000G	-	T0052S036000Q	-
	37	36.5 - 37.5	T0052R037000L	-	T0052R037000G	-	T0052S037000Q	-
	38	37.5 - 38.5	T0052R038000L	-	T0052R038000G	-	T0052S038000Q	-
	39	38.5 - 39.5	T0052R039000L	-	T0052R039000G	-	T0052S039000Q	-
	40	39.5 - 40.5	T0052R040000L	-	T0052R040000G	-	T0052S040000Q	-
	41	40.5 - 41.5	T0052R041000L	-	T0052R041000G	-	T0052S041000Q	-
	42	41.5 - 42.5	T0052R042000L	-	T0052R042000G	-	T0052S042000Q	-
	43	42.5 - 43.5	T0052R043000L	-	T0052R043000G	-	T0052S043000Q	-
	44	43.5 - 44.5	T0052R044000L	-	T0052R044000G	-	T0052S044000Q	-
	45	44.5 - 45.5	T0052R045000L	-	T0052R045000G	-	T0052S045000Q	-
	46	45.5 - 46.5	T0052R046000L	-	T0052R046000G	-	-	-
	47	46.5 - 47.5	T0052R047000L	-	T0052R047000G	-	-	-
	48	47.5 - 48.5	T0052R048000L	-	T0052R048000G	-	-	-
	49	48.5 - 49.5	T0052R049000L	-	T0052R049000G	-	-	-
	50	49.5 - 50.5	T0052R050000L	-	T0052R050000G	-	-	-
	51	50.5 - 51.5	T0052R051000L	-	T0052R051000G	-	-	-
	52	51.5 - 52.5	T0052R052000L	-	T0052R052000G	-	-	-

LATHE COLLETS - HAINBUCH COMPATIBLE



**SIZE 65 WORKHOLDING COLLETS
SUITABLE FOR HAINBUCH COLLET CHUCKS**

- Smooth or serrated bores
- Round, hexagon or square geometries
- Run-out accuracy ≤ 0.01 mm possible
- Clamping range of +/-0.5mm



*Emergency collets available in 8mm, 20mm, 30mm, & 40mm.

Collet Size	Nominal Size	Clamping Range	Order Code							
			Round Serrated	Net Price	Round Smooth	Net Price	Hexagon Serrated	Net Price	Square Serrated	Net Price
65	Emergency Collet	-	-	-	T0065WRO_000G*	£227.23	-	-	-	-
	4	3.5 - 4.5	-	-	T0065R004000G	-	-	-	-	-
	5	4.5 - 5.5	-	-	T0065R005000G	-	-	-	-	-
	6	5.5 - 6.5	-	-	T0065R006000G	-	-	-	-	-
	7	6.5 - 7.5	-	-	T0065R007000G	-	-	-	-	-
	8	7.5 - 8.5	T0065R008000Q	-	T0065R008000G	-	T0065S008000Q	-	T0065V008000Q	-
	9	8.5 - 9.5	T0065R009000Q	-	T0065R009000G	-	T0065S009000Q	-	T0065V009000Q	-
	10	9.5 - 10.5	T0065R010000Q	-	T0065R010000G	-	T0065S010000Q	-	T0065V010000Q	-
	11	10.5 - 11.5	T0065R011000L	-	T0065R011000G	-	T0065S011000Q	-	T0065V011000Q	-
	12	11.5 - 12.5	T0065R012000L	-	T0065R012000G	-	T0065S012000Q	-	T0065V012000Q	-
	13	12.5 - 13.5	T0065R013000L	-	T0065R013000G	-	T0065S013000Q	-	T0065V013000Q	-
	14	13.5 - 14.5	T0065R014000L	-	T0065R014000G	-	T0065S014000Q	-	T0065V014000Q	-
	15	14.5 - 15.5	T0065R015000L	-	T0065R015000G	-	T0065S015000Q	-	T0065V015000Q	-
	16	15.5 - 16.5	T0065R016000L	-	T0065R016000G	-	T0065S016000Q	-	T0065V016000Q	-
	17	16.5 - 17.5	T0065R017000L	-	T0065R017000G	-	T0065S017000Q	-	T0065V017000Q	-
	18	17.5 - 18.5	T0065R018000L	-	T0065R018000G	-	T0065S018000Q	-	T0065V018000Q	-
	19	18.5 - 19.5	T0065R019000L	-	T0065R019000G	-	T0065S019000Q	-	T0065V019000Q	-
	20	19.5 - 20.5	T0065R020000L	-	T0065R020000G	-	T0065S020000Q	-	T0065V020000Q	-
	21	20.5 - 21.5	T0065R021000L	-	T0065R021000G	-	T0065S021000Q	-	T0065V021000Q	-
	22	21.5 - 22.5	T0065R022000L	-	T0065R022000G	-	T0065S022000Q	-	T0065V022000Q	-
	23	22.5 - 23.5	T0065R023000L	-	T0065R023000G	-	T0065S023000Q	-	T0065V023000Q	-
	24	23.5 - 24.5	T0065R024000L	-	T0065R024000G	-	T0065S024000Q	-	T0065V024000Q	-
	25	24.5 - 25.5	T0065R025000L	-	T0065R025000G	-	T0065S025000Q	-	T0065V025000Q	-
	26	25.5 - 26.5	T0065R026000L	-	T0065R026000G	-	T0065S026000Q	-	T0065V026000Q	£372.19
	27	26.5 - 27.5	T0065R027000L	-	T0065R027000G	-	T0065S027000Q	-	T0065V027000Q	-
	28	27.5 - 28.5	T0065R028000L	-	T0065R028000G	-	T0065S028000Q	£372.19	T0065V028000Q	-
	29	28.5 - 29.5	T0065R029000L	-	T0065R029000G	-	T0065S029000Q	-	T0065V029000Q	-
	30	29.5 - 30.5	T0065R030000L	-	T0065R030000G	-	T0065S030000Q	-	T0065V030000Q	-
	31	30.5 - 31.5	T0065R031000L	-	T0065R031000G	-	T0065S031000Q	-	T0065V031000Q	-
	32	31.5 - 32.5	T0065R032000L	-	T0065R032000G	-	T0065S032000Q	-	T0065V032000Q	-
	33	32.5 - 33.5	T0065R033000L	-	T0065R033000G	-	T0065S033000Q	-	T0065V033000Q	-
	34	33.5 - 34.5	T0065R034000L	-	T0065R034000G	£188.24	T0065S034000Q	-	T0065V034000Q	-
	35	34.5 - 35.5	T0065R035000L	-	T0065R035000G	-	T0065S035000Q	-	T0065V035000Q	-
	36	35.5 - 36.5	T0065R036000L	£188.24	T0065R036000G	-	T0065S036000Q	-	T0065V036000Q	-
	37	36.5 - 37.5	T0065R037000L	-	T0065R037000G	-	T0065S037000Q	-	T0065V037000Q	-
	38	37.5 - 38.5	T0065R038000L	-	T0065R038000G	-	T0065S038000Q	-	T0065V038000Q	-
	39	38.5 - 39.5	T0065R039000L	-	T0065R039000G	-	T0065S039000Q	-	T0065V039000Q	-
	40	39.5 - 40.5	T0065R040000L	-	T0065R040000G	-	T0065S040000Q	-	T0065V040000Q	-
	41	40.5 - 41.5	T0065R041000L	-	T0065R041000G	-	T0065S041000Q	-	T0065V041000Q	-
	42	41.5 - 42.5	T0065R042000L	-	T0065R042000G	-	T0065S042000Q	-	T0065V042000Q	-
	43	42.5 - 43.5	T0065R043000L	-	T0065R043000G	-	T0065S043000Q	-	T0065V043000Q	-
	44	43.5 - 44.5	T0065R044000L	-	T0065R044000G	-	T0065S044000Q	-	T0065V044000Q	-
	45	44.5 - 45.5	T0065R045000L	-	T0065R045000G	-	T0065S045000Q	-	-	-
	46	45.5 - 46.5	T0065R046000L	-	T0065R046000G	-	T0065S046000Q	-	-	-
	47	46.5 - 47.5	T0065R047000L	-	T0065R047000G	-	T0065S047000Q	-	-	-
	48	47.5 - 48.5	T0065R048000L	-	T0065R048000G	-	T0065S048000Q	-	-	-
	49	48.5 - 49.5	T0065R049000L	-	T0065R049000G	-	-	-	-	-
	50	49.5 - 50.5	T0065R050000L	-	T0065R050000G	-	T0065S050000Q	£372.19	-	-
	51	50.5 - 51.5	T0065R051000L	-	T0065R051000G	-	-	-	-	-
	52	51.5 - 52.5	T0065R052000L	-	T0065R052000G	-	T0065S052000Q	£372.19	-	-
	53	52.5 - 53.5	T0065R053000L	-	T0065R053000G	-	-	-	-	-
	54	53.5 - 54.5	T0065R054000L	-	T0065R054000G	-	T0065S054000Q	£372.19	-	-
	55	54.5 - 55.5	T0065R055000L	-	T0065R055000G	-	T0065S055000Q	£372.19	-	-
	56	55.5 - 56.5	T0065R056000L	-	T0065R056000G	-	-	-	-	-
	57	56.5 - 57.5	T0065R057000L	-	T0065R057000G	-	-	-	-	-
	58	57.5 - 58.5	T0065R058000L	-	T0065R058000G	-	-	-	-	-
	59	58.5 - 59.5	T0065R059000L	-	T0065R059000G	-	-	-	-	-
	60	59.5 - 60.5	T0065R060000L	-	T0065R060000G	-	-	-	-	-
	61	60.5 - 61.5	T0065R061000L	-	T0065R061000G	-	-	-	-	-
	62	61.5 - 62.5	T0065R062000L	-	T0065R062000G	-	-	-	-	-
	63	62.5 - 63.5	T0065R063000L	-	T0065R063000G	-	-	-	-	-
	64	63.5 - 64.5	T0065R064000L	-	T0065R064000G	-	-	-	-	-
	65	64.5 - 65.5	T0065R065000L	-	T0065R065000G	-	-	-	-	-

LATHE COLLETS - HAINBUCH COMPATIBLE



SIZE 80 WORKHOLDING COLLETS SUITABLE FOR HAINBUCH COLLET CHUCKS

- Smooth or serrated bores
- Round, hexagon or square geometries
- Run-out accuracy ≤ 0.01 mm possible
- Clamping range of +/-0.5mm



*Please note size 80 collets are not compatible with Hainbuch Quick Change Guns. Ortlieb collets have 6 clamping segments for higher run-out accuracy. Emergency collets available in 8mm, 20mm, 40mm, & 60mm.

Collet Size	Nominal Size	Clamping Range	Order Code			
			Round Serrated	Net Price	Round Smooth	Net Price
80	Emergency Collet	-	-	-	T0080WRO_000G*	£426.89
	5	4.5 - 5.5	-	-	T0080R005000G	
	6	5.5 - 6.5	-	-	T0080R006000G	
	7	6.5 - 7.5	-	-	T0080R007000G	
	8	7.5 - 8.5	T0080R008000Q		T0080R008000G	
	9	8.5 - 9.5	T0080R009000Q		T0080R009000G	
	10	9.5 - 10.5	T0080R010000L		T0080R010000G	
	11	10.5 - 11.5	T0080R011000L		T0080R011000G	
	12	11.5 - 12.5	T0080R012000L		T0080R012000G	
	13	12.5 - 13.5	T0080R013000L		T0080R013000G	
	14	13.5 - 14.5	T0080R014000L		T0080R014000G	
	15	14.5 - 15.5	T0080R015000L		T0080R015000G	
	16	15.5 - 16.5	T0080R016000L		T0080R016000G	
	17	16.5 - 17.5	T0080R017000L		T0080R017000G	
	18	17.5 - 18.5	T0080R018000L		T0080R018000G	
	19	18.5 - 19.5	T0080R019000L		T0080R019000G	
	20	19.5 - 20.5	T0080R020000L		T0080R020000G	
	21	20.5 - 21.5	T0080R021000L		T0080R021000G	
	22	21.5 - 22.5	T0080R022000L		T0080R022000G	
	23	22.5 - 23.5	T0080R023000L		T0080R023000G	
	24	23.5 - 24.5	T0080R024000L		T0080R024000G	
	25	24.5 - 25.5	T0080R025000L		T0080R025000G	
	26	25.5 - 26.5	T0080R026000L		T0080R026000G	
	27	26.5 - 27.5	T0080R027000L		T0080R027000G	
	28	27.5 - 28.5	T0080R028000L		T0080R028000G	
	29	28.5 - 29.5	T0080R029000L		T0080R029000G	
	30	29.5 - 30.5	T0080R030000L		T0080R030000G	
	31	30.5 - 31.5	T0080R031000L		T0080R031000G	
	32	31.5 - 32.5	T0080R032000L		T0080R032000G	
	33	32.5 - 33.5	T0080R033000L		T0080R033000G	
	34	33.5 - 34.5	T0080R034000L		T0080R034000G	
	35	34.5 - 35.5	T0080R035000L		T0080R035000G	
	36	35.5 - 36.5	T0080R036000L		T0080R036000G	
	37	36.5 - 37.5	T0080R037000L		T0080R037000G	
	38	37.5 - 38.5	T0080R038000L		T0080R038000G	
	39	38.5 - 39.5	T0080R039000L		T0080R039000G	
	40	39.5 - 40.5	T0080R040000L		T0080R040000G	
	41	40.5 - 41.5	T0080R041000L		T0080R041000G	
	42	41.5 - 42.5	T0080R042000L		T0080R042000G	
	43	42.5 - 43.5	T0080R043000L		T0080R043000G	£376.83
	44	43.5 - 44.5	T0080R044000L	£376.83	T0080R044000G	
	45	44.5 - 45.5	T0080R045000L		T0080R045000G	
	46	45.5 - 46.5	T0080R046000L		T0080R046000G	
	47	46.5 - 47.5	T0080R047000L		T0080R047000G	
	48	47.5 - 48.5	T0080R048000L		T0080R048000G	
	49	48.5 - 49.5	T0080R049000L		T0080R049000G	
	50	49.5 - 50.5	T0080R050000L		T0080R050000G	
	51	50.5 - 51.5	T0080R051000L		T0080R051000G	
	52	51.5 - 52.5	T0080R052000L		T0080R052000G	
	53	52.5 - 53.5	T0080R053000L		T0080R053000G	
	54	53.5 - 54.5	T0080R054000L		T0080R054000G	
	55	54.5 - 55.5	T0080R055000L		T0080R055000G	
	56	55.5 - 56.5	T0080R056000L		T0080R056000G	
	57	56.5 - 57.5	T0080R057000L		T0080R057000G	
	58	57.5 - 58.5	T0080R058000L		T0080R058000G	
	59	58.5 - 59.5	T0080R059000L		T0080R059000G	
	60	59.5 - 60.5	T0080R060000L		T0080R060000G	
	61	60.5 - 61.5	T0080R061000L		T0080R061000G	
	62	61.5 - 62.5	T0080R062000L		T0080R062000G	
	63	62.5 - 63.5	T0080R063000L		T0080R063000G	
	64	63.5 - 64.5	T0080R064000L		T0080R064000G	
	65	64.5 - 65.5	T0080R065000L		T0080R065000G	
	66	65.5 - 66.5	T0080R066000L		T0080R066000G	
	67	66.5 - 67.5	T0080R067000L		T0080R067000G	
	68	67.5 - 68.5	T0080R068000L		T0080R068000G	
	69	68.5 - 69.5	T0080R069000L		T0080R069000G	
	70	69.5 - 70.5	T0080R070000L		T0080R070000G	
	71	70.5 - 71.5	T0080R071000L		T0080R071000G	
	72	71.5 - 72.5	T0080R072000L		T0080R072000G	
	73	72.5 - 73.5	T0080R073000L		T0080R073000G	
	74	73.5 - 74.5	T0080R074000L		T0080R074000G	
	75	74.5 - 75.5	T0080R075000L		T0080R075000G	
	76	75.5 - 76.5	T0080R076000L		T0080R076000G	
	77	76.5 - 77.5	T0080R077000L		T0080R077000G	
	78	77.5 - 78.5	T0080R078000L		T0080R078000G	
	79	78.5 - 79.5	T0080R079000L		T0080R079000G	
	80	79.5 - 80.5	T0080R080000L		T0080R080000G	

LATHE COLLETS - HAINBUCH COMPATIBLE



**SIZE 100 WORKHOLDING COLLETS
SUITABLE FOR HAINBUCH COLLET CHUCKS**

- Smooth or serrated bores
- Round geometries standard, hex or square on request
- Run-out accuracy ≤ 0.01 mm possible
- Clamping range of +/- 1mm



*Emergency collets available in 30mm, 45mm, 65mm, & 90mm.

Collet Size	Nominal Size	Clamping Range	Order Code			
			Round Serrated	Net Price	Round Smooth	Net Price
100	Emergency Collet	-	-	-	T0100WR0_000G*	£581.47
	15	14.5 - 15.5	-	-	T0100R015000G	
	16	15.5 - 16.5	-	-	T0100R016000G	
	17	16.5 - 17.5	-	-	T0100R017000G	
	18	17.5 - 18.5	-	-	T0100R018000G	
	19	18.5 - 19.5	-	-	T0100R019000G	
	20	19.5 - 20.5	T0100R020000L	£581.47	T0100R020000G	
	21	20.5 - 21.5	-	-	T0100R021000G	
	22	21.5 - 22.5	-	-	T0100R022000G	
	23	22.5 - 23.5	-	-	T0100R023000G	
	24	23.5 - 24.5	-	-	T0100R024000G	
	25	24.5 - 25.5	T0100R025000L	£581.47	T0100R025000G	
	26	25.5 - 26.5	-	-	T0100R026000G	
	27	26.5 - 27.5	-	-	T0100R027000G	
	28	27.5 - 28.5	T0100R028000L	£581.47	T0100R028000G	
	29	28.5 - 29.5	-	-	T0100R029000G	
	30	29.5 - 30.5	T0100R030000L	-	T0100R030000G	
	31	30.5 - 31.5	T0100R031000L	-	T0100R031000G	
	32	31.5 - 32.5	T0100R032000L	-	T0100R032000G	
	33	32.5 - 33.5	T0100R033000L	-	T0100R033000G	
	34	33.5 - 34.5	T0100R034000L	-	T0100R034000G	
	35	34.5 - 35.5	T0100R035000L	-	T0100R035000G	
	36	35.5 - 36.5	T0100R036000L	-	T0100R036000G	
	37	36.5 - 37.5	T0100R037000L	-	T0100R037000G	
	38	37.5 - 38.5	T0100R038000L	-	T0100R038000G	
	39	38.5 - 39.5	T0100R039000L	-	T0100R039000G	
	40	39.5 - 40.5	T0100R040000L	-	T0100R040000G	
	41	40.5 - 41.5	T0100R041000L	-	T0100R041000G	
	42	41.5 - 42.5	T0100R042000L	-	T0100R042000G	
	43	42.5 - 43.5	T0100R043000L	-	T0100R043000G	
	44	43.5 - 44.5	T0100R044000L	-	T0100R044000G	
	45	44.5 - 45.5	T0100R045000L	-	T0100R045000G	
	46	45.5 - 46.5	T0100R046000L	-	T0100R046000G	
	47	46.5 - 47.5	T0100R047000L	-	T0100R047000G	
	48	47.5 - 48.5	T0100R048000L	-	T0100R048000G	
	49	48.5 - 49.5	T0100R049000L	-	T0100R049000G	
	50	49.5 - 50.5	T0100R050000L	-	T0100R050000G	
	51	50.5 - 51.5	T0100R051000L	-	T0100R051000G	
	52	51.5 - 52.5	T0100R052000L	-	T0100R052000G	
	53	52.5 - 53.5	T0100R053000L	-	T0100R053000G	
	54	53.5 - 54.5	T0100R054000L	-	T0100R054000G	
	55	54.5 - 55.5	T0100R055000L	-	T0100R055000G	
	56	55.5 - 56.5	T0100R056000L	-	T0100R056000G	
	57	56.5 - 57.5	T0100R057000L	-	T0100R057000G	
	58	57.5 - 58.5	T0100R058000L	-	T0100R058000G	
	59	58.5 - 59.5	T0100R059000L	-	T0100R059000G	
	60	59.5 - 60.5	T0100R060000L	-	T0100R060000G	
	61	60.5 - 61.5	T0100R061000L	-	T0100R061000G	
	62	61.5 - 62.5	T0100R062000L	-	T0100R062000G	
	63	62.5 - 63.5	T0100R063000L	-	T0100R063000G	
	64	63.5 - 64.5	T0100R064000L	-	T0100R064000G	
	65	64.5 - 65.5	T0100R065000L	£581.47	T0100R065000G	
	66	65.5 - 66.5	T0100R066000L	-	T0100R066000G	
	67	66.5 - 67.5	T0100R067000L	-	T0100R067000G	
	68	67.5 - 68.5	T0100R068000L	-	T0100R068000G	
	69	68.5 - 69.5	T0100R069000L	-	T0100R069000G	
	70	69.5 - 70.5	T0100R070000L	-	T0100R070000G	
	71	70.5 - 71.5	T0100R071000L	-	T0100R071000G	
	72	71.5 - 72.5	T0100R072000L	-	T0100R072000G	
	73	72.5 - 73.5	T0100R073000L	-	T0100R073000G	
	74	73.5 - 74.5	T0100R074000L	-	T0100R074000G	
	75	74.5 - 75.5	T0100R075000L	-	T0100R075000G	
	76	75.5 - 76.5	T0100R076000L	-	T0100R076000G	
	77	76.5 - 77.5	T0100R077000L	-	T0100R077000G	
	78	77.5 - 78.5	T0100R078000L	-	T0100R078000G	
	79	78.5 - 79.5	T0100R079000L	-	T0100R079000G	
	80	79.5 - 80.5	T0100R080000L	-	T0100R080000G	
	81	80.5 - 81.5	T0100R081000L	-	T0100R081000G	
	82	81.5 - 82.5	T0100R082000L	-	T0100R082000G	
	83	82.5 - 83.5	T0100R083000L	-	T0100R083000G	
	84	83.5 - 84.5	T0100R084000L	-	T0100R084000G	
	85	84.5 - 85.5	T0100R085000L	-	T0100R085000G	
	86	85.5 - 86.5	T0100R086000L	-	T0100R086000G	
	87	86.5 - 87.5	T0100R087000L	-	T0100R087000G	
	88	87.5 - 88.5	T0100R088000L	-	T0100R088000G	
	89	88.5 - 89.5	T0100R089000L	-	T0100R089000G	
	90	89.5 - 90.5	T0100R090000L	-	T0100R090000G	
	91	90.5 - 91.5	T0100R091000L	-	T0100R091000G	
	92	91.5 - 92.5	T0100R092000L	-	T0100R092000G	
	93	92.5 - 93.5	T0100R093000L	-	T0100R093000G	
	94	93.5 - 94.5	T0100R094000L	-	T0100R094000G	
	95	94.5 - 95.5	T0100R095000L	-	T0100R095000G	
	96	95.5 - 96.5	T0100R096000L	-	T0100R096000G	
	97	96.5 - 97.5	T0100R097000L	-	T0100R097000G	
	98	97.5 - 98.5	T0100R098000L	-	T0100R098000G	
	99	98.5 - 99.5	T0100R099000L	-	T0100R099000G	
	100	99.5 - 100.5	T0100R100000L	-	T0100R100000G	

LATHE COLLETS - HAINBUCH COMPATIBLE



BOOST YOUR LATHE PRODUCTIVITY

LESS HANDLING, MORE MACHINING

From driven tooling to quick-change systems, we provide the solutions that keep lathes productive.



**VDI &
BMT STATIC
TOOLHOLDERS**



**AXIAL &
RADIAL DRIVEN
TOOLING**



**QUICK CHANGE
& MODULAR
SYSTEMS**



**TOOL
HOLDING
ACCESSORIES**

For more information, email tech-support@cutwel.net

WTO
Higher Productivity

