

Product features:

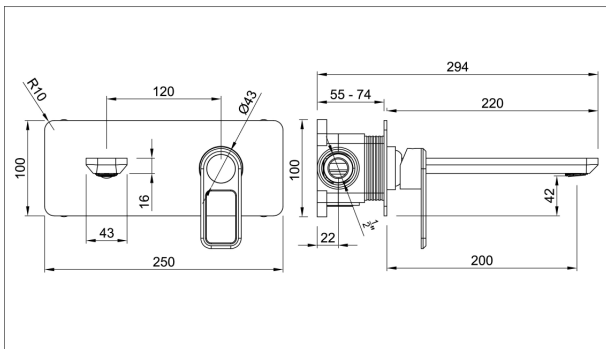
- Stylish two tone brushed accents
- Part G compliant 5 Litres / minute flow rate
- Modern minimalism with flair
- Wall mounting box for easier installation
- Cold start valve

Packaged properties:

Box length (mm): Box depth(mm):
Box width(mm): Boxed weight (Kg):

Includes pop up waste?: No
Additional comments:

Product dimensions:



LEVARTO
BASIN / BATH MIXER WALL
MOUNTED

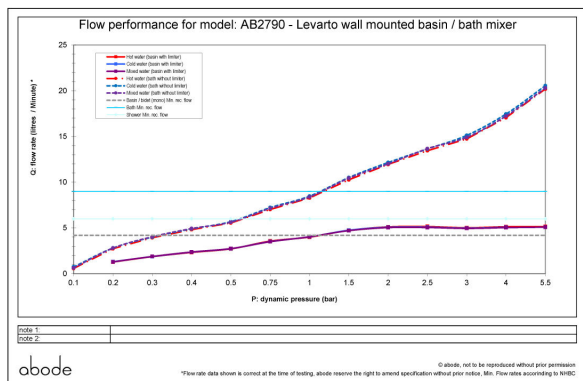
abode

(c) abode home products ltd
www.abode.co.uk
our policy is to continually
improve and develop products,
and accordingly we reserve the
right to amend specifications
without prior notice

- Product mounted where: 0 mm
- Recommended hole size: 0 mm
- Overall Height / projection: 220 mm
- Exit reach: 200 mm
- Exit height: 42 mm
- Base size: 250 x100 mm
- Inlet centre distance(s):

- Min. fitting depth required: 0 mm
- Max. surface depth: n/a

Product flow characteristics:



- Min / Max water pressure (bar): 0.40* / 5
flow rate varies depending on aerator install choice (high flow aerator supplied for bath filling for low supply pressures), see graph for details
- Part G max. mixed flow rate at 3 bar (l/m): 4.95
- Inlet connection type / length: N/a / 0 mm
- Inlet (plumbing connection) / outlet size: 1/2" F / n/a
- Product flow characteristics: Single flow
Non return valve(s) supplied or position: no
- Aerator type: 5 L/M, honeycomb, swivel & high flow option for bath filling (or low pressure supplies)
- Control valve type: Single lever (35mm)
- Includes output diverter?: N/A

Warranty Summary (full details available on request):

- Materials and workmanship defects warranted for 5 years
- Valves and working parts warranted for 5 years
- Surface warranty defects warranted for 1 year
- O-rings, hoses & gaskets warranted for 1 year

Care instructions:

- Clean the mixers and showers regularly as required, using soap, do not use any other cleaners.
- Regular cleaning will prevent the build-up of lime scale and dirt
- After cleaning rinse thoroughly with clean water to remove any cleaner residue
- Residues of liquid soaps, shampoos and shower foams can also cause damage, so rinse with clean water after using, avoid contact with any abrasives