

Precautions

Installation Notes

- ▶ Install in accordance with the IEE wiring regulations and building regulations.
- ▶ This product must be installed by a suitably competent person.
- ▶ Keep away from children. Not a toy.
- ▶ Contains small parts. Possible choking and suffocation risk.

IMPORTANT

- ▶ Please read these instructions before commencing any work.
- ▶ Please retain instructions for future reference.
- ▶ Remove all packaging before connecting to power supply.
- ▶ Only compatible with Syndeo products.

Electrical

- ▶ Switch the power off at the mains supply before installing or maintaining this fitting.
- ▶ Ensure others cannot restore the electrical power supply without your knowledge.
- ▶ Only install compatible constant voltage LED fixtures and controls. 12V products should be used with a 12V driver and 24V products should be used with a 24V driver. Contact technical support or visit the product page for compatible products.
- ▶ Ensure that the power capacity of the LED driver is greater than the total load of all the connected products.
- ▶ Do not overload the power supply.
- ▶ The maximum length of output cable to the light source should not exceed 3.5 metres.
- ▶ Use only with an approved Syndeo mains lead.
- ▶ Do not install if the product has visible damage.
- ▶ Do not modify or disassemble the product beyond instructions or the warranty will be void.

Mechanical

- ▶ The driver will generate heat during use. It should be installed in a well ventilated location free from explosive gases and vapours and mounted to a surface that will dissipate this heat i.e. metal, not wood or plastic.
- ▶ The driver should be fixed to a surface using fixing points.
- ▶ Protect the driver from mechanical damage. Take care not to dislodge any components during installation. Ensure that cables connected to the driver cannot be pulled and are secured to provide strain relief.
- ▶ Do not over tighten screws when mounting the driver.

Environmental

- ▶ The product should only be used in an environment with an ambient temperature between +5°C to +40°C.
- ▶ The temperature of the LED driver should never exceed 60°C when in operation.
- ▶ IP20 drivers are not waterproof and can only be installed indoors and with humidity of no more than 55%.
- ▶ Keep away from moisture and only use in dry locations.
- ▶ Install in a location without chemicals like sulphur, acid and halogen present.
- ▶ Avoid direct exposure to sunlight and protect cables from UV rays.
- ▶ Do not dispose with the household waste.

Product Warranty

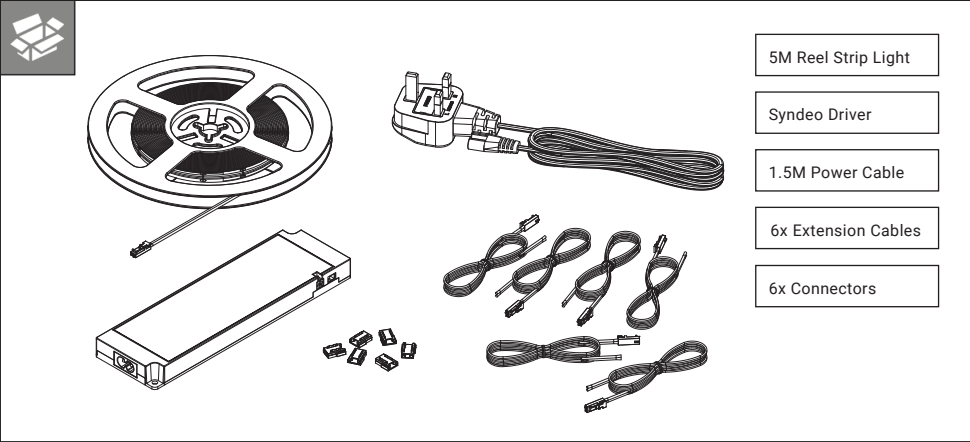
1. A warranty period is provided for products in normal use. For any faults arising during the period that are confirmed to be quality related by inspection by the company, a product of the same specification will be replaced for free.
2. The warranty does not cover any of the following:
  - ( 1 ) Any product damage due to usage not allowed in the instructions.
  - ( 2 ) Any product damage due to disassembling or wrong operation by the user.
  - ( 3 ) Severe appearance damage or deformation of the product.

LED Strip Light Kit

- ▶ SKIT-24-COB5M
- ▶ SKIT-24-1405M

User Manual

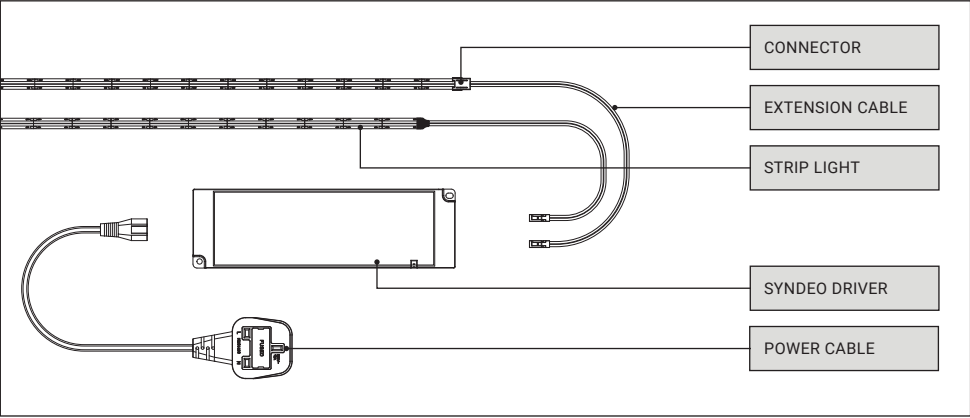
Package Contains



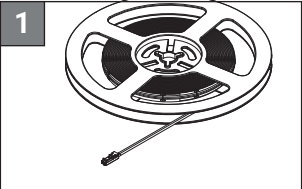
**NOTE:** 5M Reel Strip Light will vary depending on the LED Strip Light Kit you have purchased.



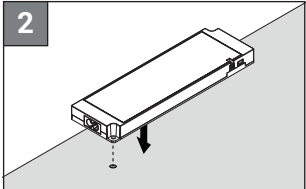
Diagram



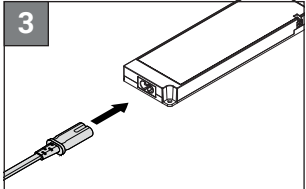
Installation



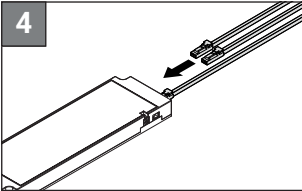
Unbox the product and fully uncoil the cables and strip light.



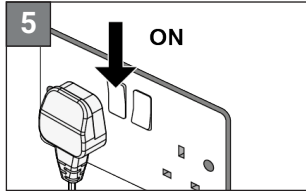
Mount the driver. Make sure it within 1.5 metres of a wall socket.



Connect the power cable into the driver.





Connect the strip light into the driver via the ports.




Connect the plug into a wall socket and turn on.

Polarity

• SKIT-24-COB5M
• SKIT-24-1405M
+V 
-V 

Variations


• SKIT-24-COB5M



Kit includes:

- ▶ 5 Metre Reel
- ▶ 60W Driver
- ▶ 1.5 Metre Power Cable
- ▶ 6x 2 Core Cables
- ▶ 6x 2 Core Connectors

• SKIT-24-1405M

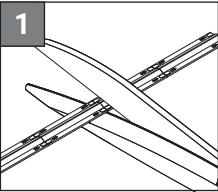


Kit includes:

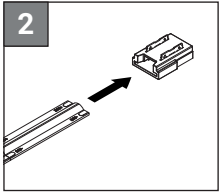
- ▶ 5 Metre Reel
- ▶ 60W Driver
- ▶ 1.5 Metre Power Cable
- ▶ 6x 2 Core Cables
- ▶ 6x 2 Core Connectors

Cutting & Connecting

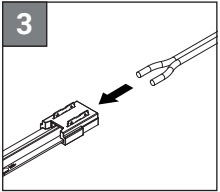
If your installation requires the 5 metre reel to be cut into multiple lengths, you can use the connectors and extension cables provided to achieve this. See the instructions below on cutting and connecting.



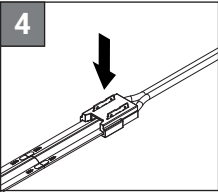
Cut the strip light at the required length along the cut point.



Insert the strip light into the connector.



Insert the bare end of the extension cable into the connector. Check polarity.



Press down the metal pins on the connector. We recommend using pliers.