

Precautions

Installation Notes

- ▶ Install in accordance with the IEE wiring regulations and building regulations.
- ▶ This product must be installed by a suitably competent person.

Electrical

- ▶ Do not connect directly to mains electrical supply.
- ▶ Switch the power off at the mains supply before installing or maintaining this fitting.
- ▶ Ensure others cannot restore the electrical power supply without your knowledge.
- ▶ Ensure the product is in good working condition. If there is visible damage do not use.
- ▶ This product must be used with a good quality constant voltage LED driver. Ensure that the voltage output of the driver matches rated voltage of the LED strip.
- ▶ Connect the strip with correct polarity. Refer to the 'wiring' section for help.
- ▶ Ensure that the power capacity of the LED driver is greater than the total load of all the LED strip connected to it.
- ▶ The LED strip and cable should be protected by a fuse or equivalent device installed between the driver and LED strip and as close to the driver as possible.
- ▶ Ensure that the current capacity of cable connecting the LED strip to the driver is greater than the maximum drawn by the strip and the cut off of any over-current protection (fuse).
- ▶ Protect the strip from static electricity

Mechanical

- ▶ Do not use the product if damaged. Do not use with worn or damaged wires or strip lights.
- ▶ The product will generate heat during use. It should be installed in a well ventilated location on a thermally conductive surface. Fully uncoil the LED strip.
- ▶ The strip should be mechanically supported in addition to its self adhesive backing.
- ▶ Do not fold the LED strip or bend it side to side. The radius of any front to back bends should not be less than 30mm.
- ▶ Protect the strip from mechanical damage. Take care not to dislodge any components during installation. Ensure that wires connecting the strip cannot be pulled

Environmental

- ▶ The product should only be used in an environment with an ambient temperature between -20°C to +40°C.
- ▶ The temperature of the LED strip should never exceed 60°C when in operation.
- ▶ IP20 strip is not waterproof and can only be installed indoors and with humidity of no more than 55%.
- ▶ IP65 strip should only be exposed to water for short periods of time and humidity of no more than 80%.
- ▶ IP67 strip is suitable for indoor and outdoor installation.
- ▶ Only install in a location free from chemicals, gases and flammable materials.

Product Warranty

1. A warranty period is provided for products in normal use. For any faults arising during the period that are confirmed to be quality related by inspection by the company, a product of the same specification will be replaced for free.
2. The warranty does not cover any of the following:
 - (1) Any product damage due to usage not allowed in the instructions.
 - (2) Any product damage due to disassembling or wrong operation by the user.
 - (3) Severe appearance damage or deformation of the product.

LED Strip Light

▶ COB LED Strip Light

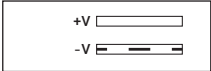
User Manual

IMPORTANT

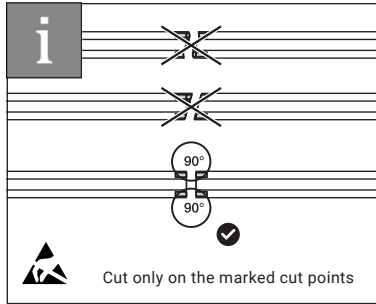
- ▶ Please read these instructions before commencing any work.
- ▶ Please retain these instructions for future reference.
- ▶ Please refer to product listing for detailed information.
- ▶ Remove all packaging before connecting to power supply.
- ▶ If the cable tag is removed, ensure it is retained and stored safely.

SKU	Voltage	Power	Lumens	IP Rating	Ta	Size
PPS24-FC	24V	11.2W/m	Up to 1198lm/m	IP20	45°C	W8mm x H2.5mm

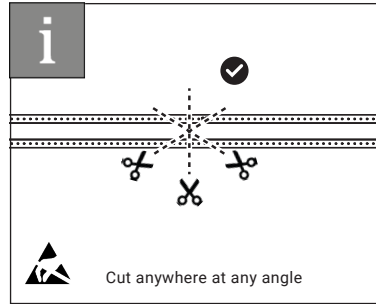
Polarity



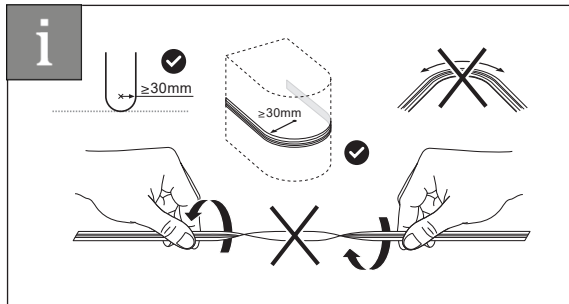
Cutting



Cutting (Cut Anywhere COB)

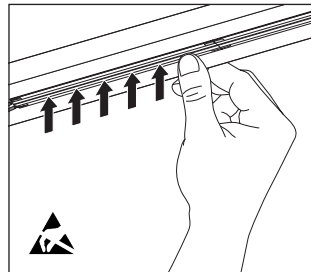


Tolerance & Bend



Mounting

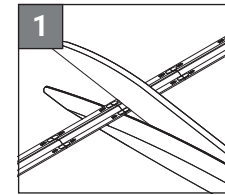
1. Ensure the surfaces you are mounting to are clean, smooth, free of greases, oil and dirt particles.
2. Make sure the objects/materials you are attaching to are firmly fixed to a surface.
3. Ensure the protective tape backing is completely removed before install.
4. If mounting to metallic surfaces, apply an insulating layer between the mounting surface and the end of the strip light to prevent short-circuits.
5. When installing, press gently along the strip light at regular intervals. Do not press hard as this may cause damage.
6. If installing on a down-facing surface, fixing clips are recommended.



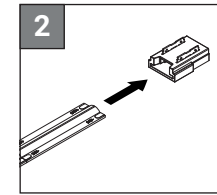
TIP: the strip light should be mounted to a thermally conductive surface such as aluminium or aluminium profile.

Cutting & Connecting

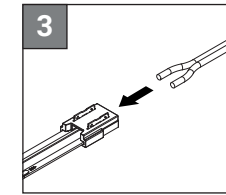
If your installation requires the 5 metre reel to be cut into multiple lengths, you can use the connectors and extension cables provided to achieve this. See the instructions below on cutting and connecting.



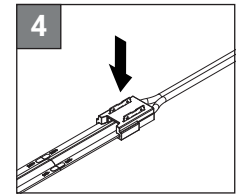
Cut the strip light at the required length along the cut point.



Insert the strip light into the connector.

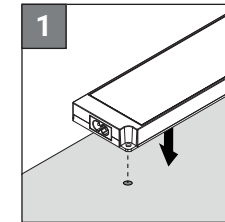


Insert the bare end of the extension cable into the connector. Check polarity.

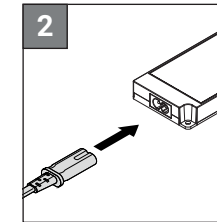


Press down the metal pins on the connector. We recommend using pliers.

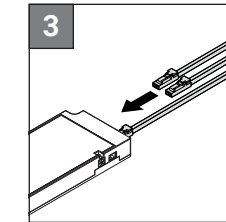
Wiring



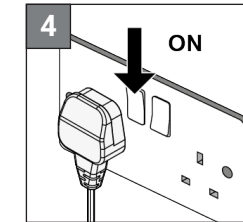
Mount the driver. Make sure it is within 1.5 metres of a wall socket.



Connect the power cable into the driver.



Connect the component into the driver via the ports.



Connect the plug into a wall socket and turn on.

Soldering

1. Make sure you are soldering in a well ventilated area and wear protective eyewear.
2. Check you have made a clean cut before soldering.
3. You may wish to clean the areas being soldered with flux.
4. Before soldering, tin plate the cable ends and solder pads first.
5. Allow the solder point to completely cool down after every solder.

WARNING: for more information on the soldering process and safety precautions please follow the soldering iron manufacturer's instructions.

