

Precautions

Installation Notes

- ▶ This product must be installed by a suitably competent person.
- ▶ Contains small parts, possible choking risk. Keep away from children. Not a toy.

IMPORTANT

- ▶ Please read these instructions before commencing any work.
- ▶ Please retain these instructions for future reference.
- ▶ Only use with Tagra LED strip lights.
- ▶ Please refer to product listing for detailed information regarding compatible strip, max run lengths and cable gauge.
- ▶ Soldering is recommended for a permanent installation.

Electrical

- ▶ Switch the power off at the mains supply before installing or maintaining this fitting.
- ▶ Ensure others cannot restore the electrical power supply without your knowledge.
- ▶ Ensure the product is in good working condition. If there is visible damage do not use.
- ▶ Connect with the correct polarity to avoid short circuit or product damage.
- ▶ Only use with compatible Tagra LED strip lights.
- ▶ Do not exceed the maximum current specified for the connector. Refer to packaging.
- ▶ Only use with 20 AWG cable.

Mechanical

- ▶ Do not use the product if damaged.
- ▶ Do not use with worn or damaged wires or strip lights.
- ▶ Protect the connectors from mechanical damage. Take care not to dislodge any components during installation. Ensure that wires connected cannot be pulled.

Environmental

- ▶ The product should only be used in an environment with an ambient temperature between -0°C to +45°C.
- ▶ The temperature of the LED connector should never exceed +45°C when in operation.
- ▶ IP20 connectors are not waterproof and can only be installed indoors where humidity is no more than 55%.
- ▶ For indoor use only.
- ▶ Only install in a location free from chemicals, gases and flammable materials.
- ▶ Store in a clean dry area.

Product Warranty

1. A warranty period is provided for products in normal use. For any faults arising during the period that are confirmed to be quality related by inspection by the company, a product of the same specification will be replaced for free.
2. The warranty does not cover any of the following:
 - (1) Any product damage due to usage not allowed in the instructions.
 - (2) Any product damage due to disassembling or wrong operation by the user.
 - (3) Severe appearance damage or deformation of the product.

LED Connectors

▶ Solderless Connectors

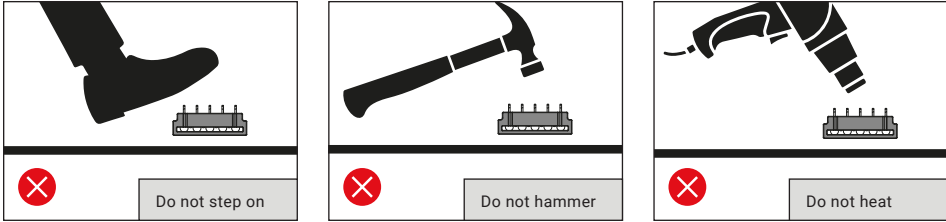
User Manual

tagra[®]

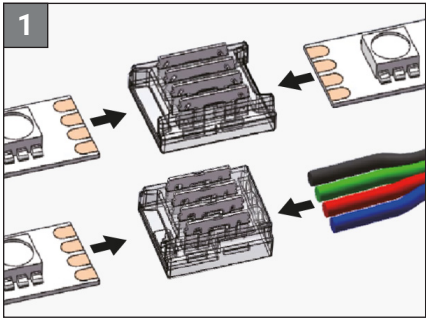


v5

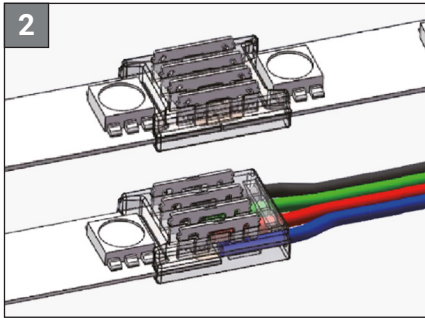
Precautions



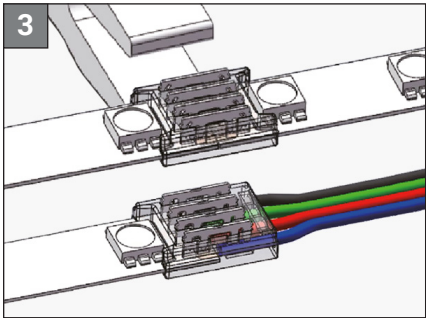
Installation



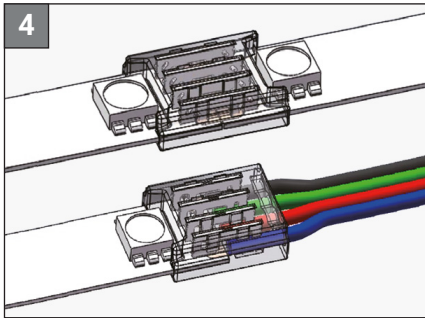
Prepare the LED strip with the connector. Match the connector with the correct strip light. Do not strip the insulation from the cables.



Insert the strip/cables into the connector. Check the polarity. Refer to table below.

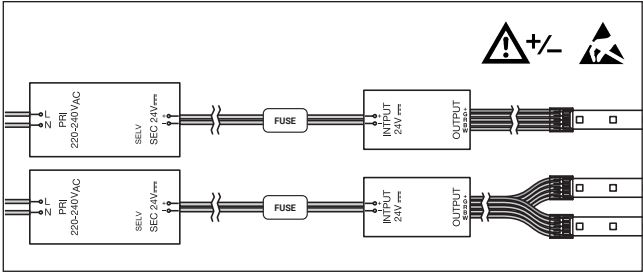


Use pliers to press down the metal pins of the connector (see 'Metal Pins').



- ▶ Check the strip light is fully seated in the connector.
- ▶ Check the metal pins are centered on the strip light copper pads.
- ▶ Check that each wire is fully seated in the connector.
- ▶ Check the metal pins are fully depressed and are completely flush with the surface of the connector.

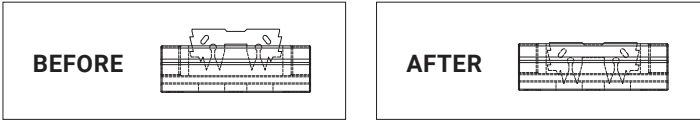
Wiring



WARNING: This product must be installed by a suitably competent person. Check polarity (+/-) is correct before turning on. Incorrect polarity can cause damage to products.

CCT	RGB	RGBW	RGBCCT
+	+	+	+
WW -	R -	R -	R -
CW -	G -	G -	G -
	B -	B -	B -
	W -	W -	W -
			WW -

Metal Pins



Soldering

1. Make sure you are soldering in a well ventilated area and wear protective eyewear.
2. Check you have made a clean cut before soldering.
3. You may wish to clean the areas being soldered with flux.
4. Before soldering, tin plate the cable ends and solder pads first.
5. Allow the solder point to completely cool down after every solder.

WARNING: for more information on the soldering process and safety precautions please follow the soldering iron manufacturer's instructions.

