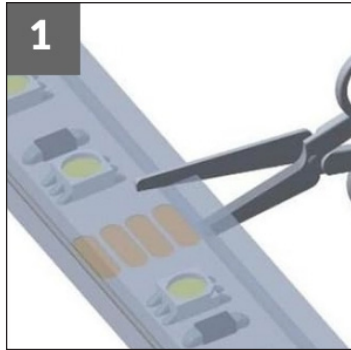


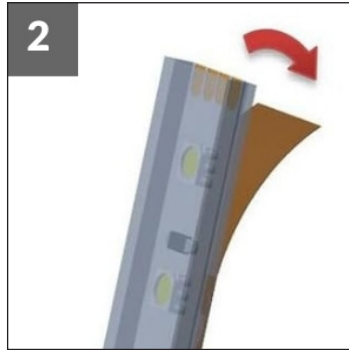
LED Connectors

► Solderless IP Connectors

tagra®



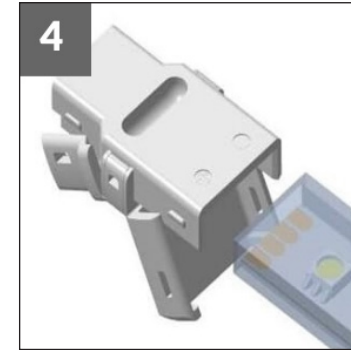
Cut strip light to the desired length using a sharp pair of scissors.



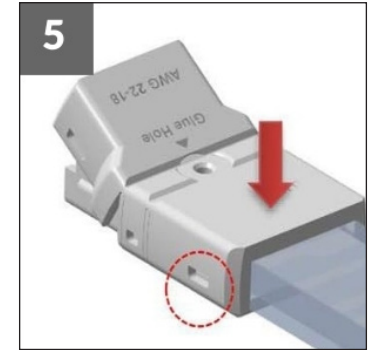
At the end you wish to connect, peel back a small section of backing from the adhesive.



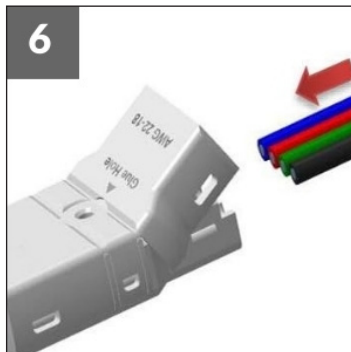
Open the connector at both ends.



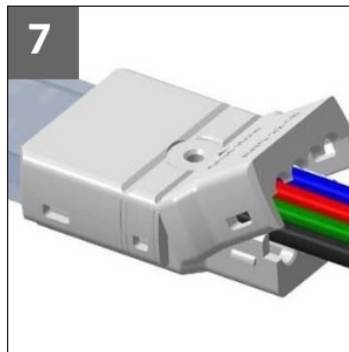
Slide the strip light into the connector, making sure the strip light is facing the correct way up.



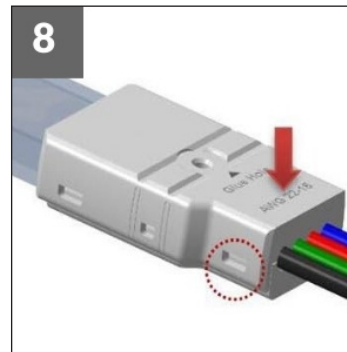
Close the connector onto the strip light. You should here a small click.



At the other end of the connector, line up the wires so that the polarity matches the strip light.



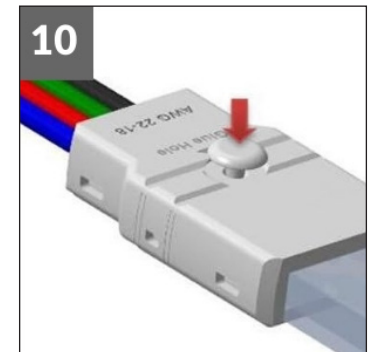
Insert the wires into the connector until you feel resistance.



Close the connector onto the wires. You should here a small click.



Apply glue into the connector via the glue hole situated on the top of the connector.



Place the stopper into the glue hole. Leave to dry for atleast 12 hours.