

Precautions

Installation Notes

- Install in accordance with the IEE wiring regulations and building regulations.
- This product must be installed by a suitably competent person.
- To reduce the risk of strangulation the flexible wiring connected to this luminaire shall be effectively fixed to the wall if the wiring is within arm's reach

Electrical

- Do not connect directly to mains electrical supply.
- Switch the power off at the mains supply before installing or maintaining this fitting.
- Ensure others cannot restore the electrical power supply without your knowledge.
- Ensure the product is in good working condition. If there is visible damage do not use.
- This product must be used with a good quality SELV constant voltage LED driver. Ensure that the voltage output of the driver matches rated voltage of the LED luminaire.
- Connect the luminaire with correct polarity. Refer to the 'wiring' section for help. Terminal block not included.
- Ensure that the power capacity of the LED driver is greater than the total load of all the LED luminaire connected to it.
- The LED luminaire and cable should be protected by a fuse or equivalent device installed between the driver and LED luminaire and as close to the driver as possible.
- Ensure that the current capacity of cable connecting the LED luminaire to the driver is greater than the maximum drawn by the luminaire and the cut off of any over-current protection (fuse).
- Product is dimmable only with specific dimmers or dimming methods

Mechanical

- Do not use the product if damaged. Do not use with worn or damaged wires or strip lights.
- The product will generate heat during use. It should be installed in a well ventilated location. Fully uncoil all cables. Do not cover or conceal.
- Protect the luminaire from mechanical damage. Take care not to dislodge any components during installation. Ensure that wires connecting the luminaire cannot be pulled.
- Ensure suspension accessories are correctly fitted.
- The external flexible cable or cord of this luminaire cannot be replaced; if the cord is damaged, the luminaire shall be destroyed.
- The light source of this luminaire is not replaceable; when the light source reaches its end of life the whole luminaire shall be replaced.
- These products contain a light source of energy efficiency class F & G. Please refer to product listing for detailed information.

Environmental

- The product should only be used in an environment with an ambient temperature between -20°C to +50°C.
- For indoor use only.
- Only install in a location free from chemicals, corrosives, gases and flammable materials.

Product Warranty

1. A warranty period is provided for products in normal use. For any faults arising during the period that are confirmed to be quality related by inspection by the company, a product of the same specification will be replaced for free.
2. The warranty does not cover any of the following:
 - (1) Any product damage due to usage not allowed in the instructions.
 - (2) Any product damage due to disassembling or wrong operation by the user.
 - (3) Severe appearance damage or deformation of the product.

LED Spotlights

- SYN-MS
- SYN-PL

User Manual

IMPORTANT

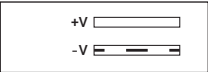
- Please read these instructions before commencing any work.
- Please retain these instructions for future reference.
- Please refer to product listing for detailed information.
- Remove all packaging before connecting to power supply.
- If the cable tag is removed, ensure it is retained and stored safely.

SKU	Voltage	Current Type	Wattage	Lumens	IP Rating	Warranty
SYN-MS	24V	DC	1.0W	60lm	IP44 (Front), IP20 (Back)	5 Years
SYN-PL	24V	DC	3.0W	350lm	IP20	5 Years

Mounting & Installation

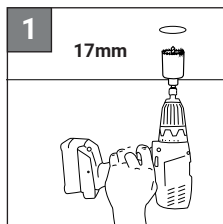
1. Ensure the surfaces you are mounting to are clean, smooth, free of greases, oil and dirt particles.
2. Make sure the objects/materials you are attaching to are firmly fixed to a surface.
3. Ensure the power supply is turned off before install.
4. Do not install the lighting if the product is damaged or deformed.
5. Once fitted, make sure the component is secure.

Polarity



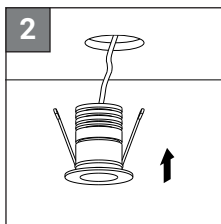
Mini Spotlight

SYN-MS

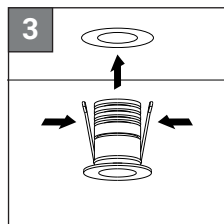


Drill a 17mm cut out into the surface you are installing the spotlight.

Note: Check the area behind is free from objects.



Pass the power cable through the cut out ensuring you can locate it on the other side.

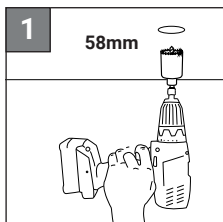


Pinch the spring clips inwards, pass through the cut out. Once springs are inside the cut out, release and push in until flush.

Puck Light

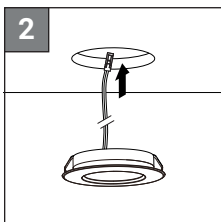
SYN-PL

(Recessed)

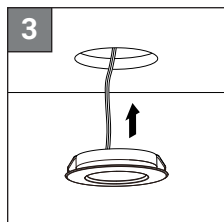


Drill a 58mm cut out into the surface you are installing the spotlight.

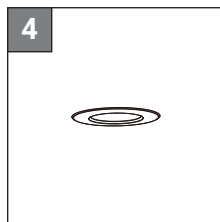
Note: Check the area behind is free from objects.



Pass the power cable through the cut out ensuring you can locate it on the other side.



Press the puck light into the 58mm recess hole. Metal strips on the sides will hold in place.

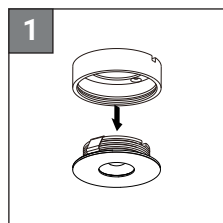


Ensure the puck light is fully recessed with no gaps showing.

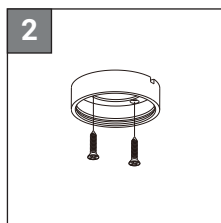
Puck Light

SYN-PL

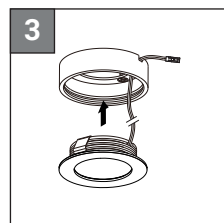
(Surface Mount)



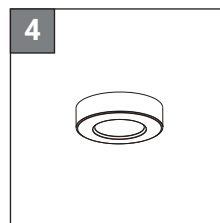
Separate the puck light from the mounting plate.



Secure the mounting plate to the surface with the screws provided.

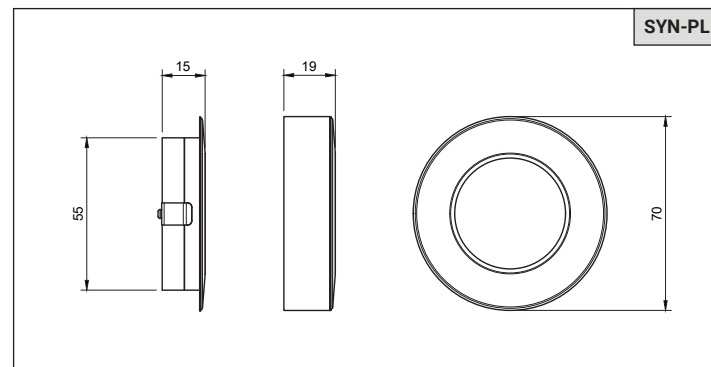
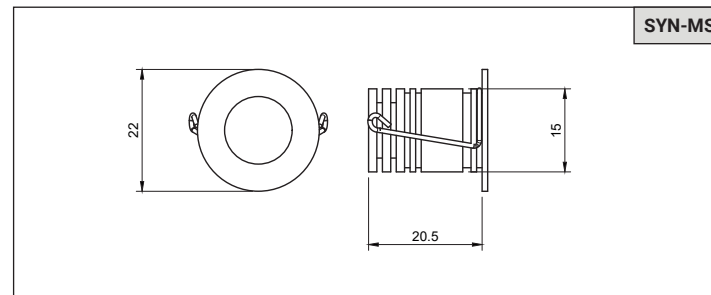


Pass the power cable through exit point on the mounting plate.

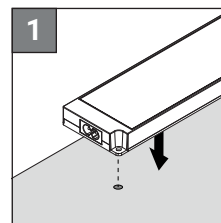


Clip the puck light into the mounting plate.

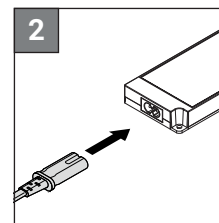
Dimensions



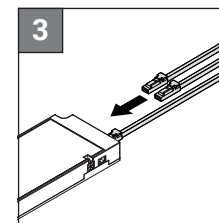
Wiring



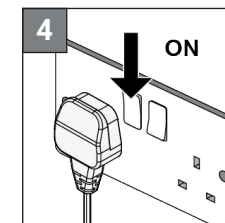
Mount the driver. Make sure it within 1.5 metres of a wall socket.



Connect the power cable into the driver.



Connect the component into the driver via the ports.



Connect the plug into a wall socket and turn on.