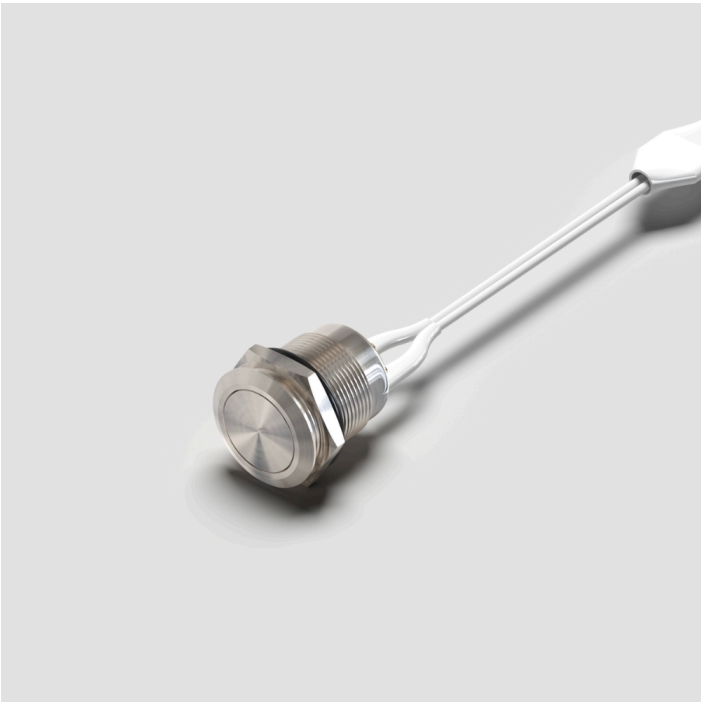


SYN-MSWITCH



Key Features

- Input Voltage (Min/Max):** 12V – 24V
- Colour Control Type:** Single colour
- Mounting Type:** Recessed
- IP Rating:** 20
- Warranty:** 3 Years

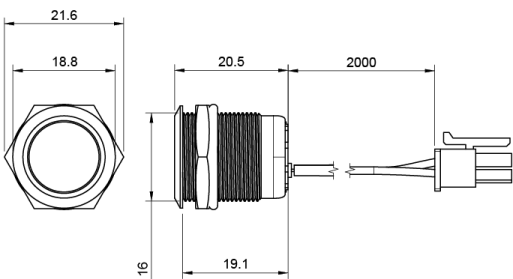
12V-24V

IP20

Mechanical Data

Body Colour	Silver
Cut Out Diameter	16 mm
Product Weight	34 g
Product Dimensions	25x19x18 mm

Dimensions



Input

Input Current	0.05 A
Input Current Max ·	0.05 A
Input Current Type	DC
Input Voltage	12 - 24 V

Output

No · of Control Channels	1
Output Current Type	DC
Output Current Max · @12V	0.05 A
Output Current Max · @24V	0.05 A
Output Current	0.05 A
Output Voltage	12 - 24 V

### Control

Colour Control Type	Single colour
Default PWM Frequency	0 Hz
Interface Type	uart
No. of Programmes	1
Sensor Type	mechanical switch
Detection Distance	0 m
LED Switching Load	60 W

### Electrical Data

Constant Voltage / Constant Current	CV
-------------------------------------	----

### Protection

Electrical Safety Class	II
-------------------------	----

### Environment

Application Environment	Interior
Body Material	Metal
Ingress Protection (IP)	IP20
Interior or Exterior Use	Interior
Mounting Type	Recessed

### Efficiency

No-Load Power Consumption	0.2 W
Rated Life	500000 Hours
Startup Time	1 Secs