

Precautions

Installation Notes

- Install in accordance with the IEE wiring regulations and building regulations.
- This product must be installed by a suitably competent person.

IMPORTANT

- Please read these instructions before commencing any work.
- Please retain these instructions for future reference.
- Please refer to product listing for detailed information.
- Remove all packaging before connecting to power supply.

Electrical

- Do not connect directly to mains electrical supply.
- Switch the power off at the mains supply before installing or maintaining this fitting.
- Ensure others cannot restore the electrical power supply without your knowledge.
- Ensure the product is in good working condition. If there is visible damage do not use.
- This product must be used with a good quality constant voltage LED driver. Ensure that the voltage output of the driver matches rated voltage of the LED strip.
- Connect the strip with correct polarity. Refer to the 'wiring' section for help.
- Ensure that the power capacity of the LED driver is greater than the total load of all the LED strip connected to it.
- The LED strip and cable should be protected by a fuse or equivalent device installed between the driver and LED strip and as close to the driver as possible.
- Ensure that the current capacity of cable connecting the LED strip to the driver is greater than the maximum drawn by the strip and the cut off of any over-current protection (fuse).
- Protect the strip from static electricity

Mechanical

- Do not use the product if damaged. Do not use with worn or damaged wires or strip lights.
- The product will generate heat during use. It should be installed in a well ventilated location on a thermally conductive surface. Fully uncoil the LED strip.
- The strip should be mechanically supported in addition to its self adhesive backing.
- Do not fold the LED strip or bend it side to side. The radius of any front to back bends should not be less than 30mm.
- Protect the strip from mechanical damage. Take care not to dislodge any components during installation. Ensure that wires connecting the strip cannot be pulled

Environmental

- The product should only be used in an environment with an ambient temperature between -20°C to +40°C.
- The temperature of the LED strip should never exceed 60°C when in operation.
- IP20 strip is not waterproof and can only be installed indoors and with humidity of no more than 55%.
- IP65 strip should only be exposed to water for short periods of time and humidity of no more than 80%.
- IP67 strip is suitable for indoor and outdoor installation.
- Only install in a location free from chemicals, gases and flammable materials.

Product Warranty

1. A warranty period is provided for products in normal use. For any faults arising during the period that are confirmed to be quality related by inspection by the company, a product of the same specification will be replaced for free.
2. The warranty does not cover any of the following:
 - (1) Any product damage due to usage not allowed in the instructions.
 - (2) Any product damage due to disassembling or wrong operation by the user.
 - (3) Severe appearance damage or deformation of the product.

LED Strip Light

► Digital Pixel Strip Light

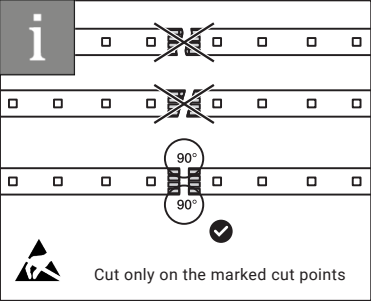
User Manual

tagra®

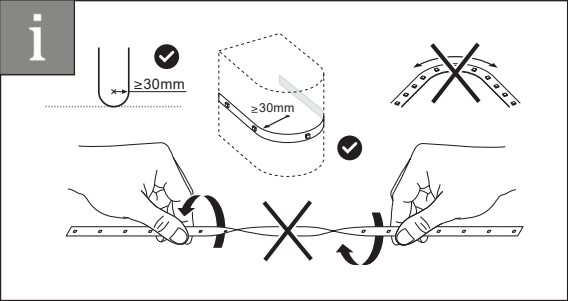


v4

Cutting

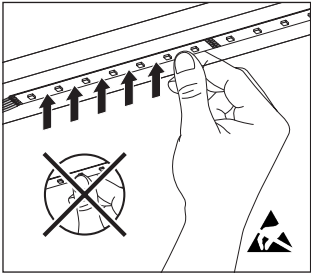


Tolerance & Bend



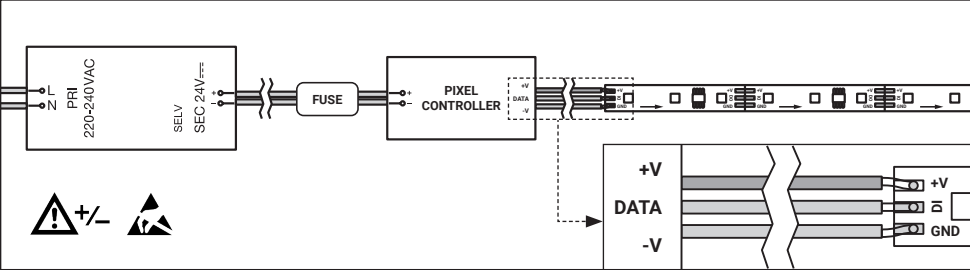
Mounting

- 1. Ensure the surfaces you are mounting to are clean, smooth, free of greases, oil and dirt particles.
- 2. Make sure the objects/materials you are attaching to are firmly fixed to a surface.
- 3. Ensure the protective tape backing is completely removed before install.
- 4. If mounting to metallic surfaces, apply an insulating layer between the mounting surface and the end of the strip light to prevent short-circuits.
- 5. When installing, press down on the strip light making sure you press inbetween the LED diodes.
- 6. If installing on a down-facing surface, fixing clips are recommended.



NOTE: The strip light should be mounted to a thermally conductive surface such as aluminium or aluminium profile.

Wiring



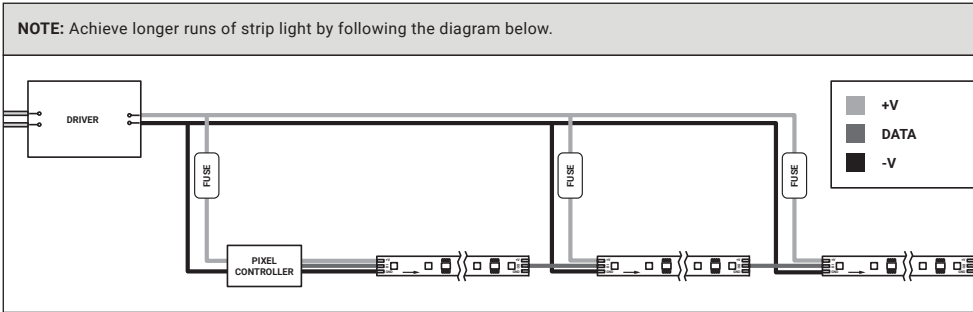
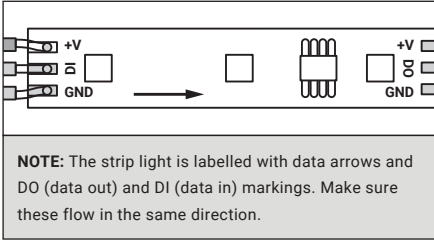
STRIP	WIRE	CONTROLLER
+V	Red	+V
DI	Yellow	
DI	Green	DATA
GND	Black	-V

STRIP	WIRE	CONTROLLER
+V	Red	+V
DI	Green	DATA
GND	Black	-V

TD12-RGB-60
TD12-RGB-144-5M
TD12-RGBW-60-5M
TD24-RGB-96
TD24-RGB-120-5M-V2
TD24-RGB-COB
TD24-W5M
TD24-RGBWC0B5M

WARNING: This product must be installed by a suitably competent person. Check polarity (+/-) is correct before turning on.
WARNING: Never connect DATA to +V.

NOTE: Maximum length of data cable between controller and strip light cannot exceed 2 metres. Longer lengths can be achieved with specialist cabling.



IC TYPE	SKU
GS8208	TD12-RGB-60
WS2815	TD12-RGB-144-5M
UCS2904	TD12-RGBW-60-5M

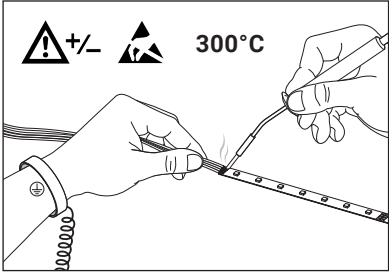
IC TYPE	SKU
WS2811	TD24-RGB-96
TM1804	TD24-RGB-120-5M-V2
WS2811	TD24-W5M

IC TYPE	SKU
TM1903	TD24-RGB-COB
WS2814	TD24-RGBWC0B5M

Soldering

- 1. Make sure you are soldering in a well ventilated area and wear protective eyewear.
- 2. Check you have made a clean cut before soldering.
- 3. You may wish to clean the areas being soldered with flux.
- 4. Before soldering, tin plate the cable ends and solder pads first.
- 5. Allow the solder point to completely cool down after every solder.

WARNING: For more information on the soldering process and safety precautions please follow the soldering iron manufacturer's instructions.



Troubleshooting

- **Strip doesn't respond to controller**
Check that the data output of the controller is connected to the data input of the strip light, not the output.
- **The strip lights but the animation is distorted**
Check that the IC type setting on the controller matches the IC type of the LED strip light (see table above).
- **Strip lights single colours but animation is distorted.**
Check that the GND of each strip light is connected to the GND on the controller.
Check that the length of the cables between the controller and DIN on the strip are shorter than 2m.