

PRECAUTIONS

INSTALLATION NOTES

- ▶ Install in accordance with the IEE wiring regulations and building regulations.
- ▶ This product must be installed by a suitably competent person.
- ▶ To reduce the risk of strangulation the flexible wiring connected to this luminaire shall be effectively fixed to the wall if the wiring is within arm's reach

ELECTRICAL

- ▶ Do not connect directly to mains electrical supply.
- ▶ Switch the power off at the mains supply before installing or maintaining this fitting.
- ▶ Ensure others cannot restore the electrical power supply without your knowledge.
- ▶ Ensure the product is in good working condition. If there is visible damage do not use.
- ▶ This product must be used with a good quality SELV constant voltage LED driver. Ensure that the voltage output of the driver matches rated voltage of the LED luminaire
- ▶ Connect the luminaire with correct polarity. Refer to the 'wiring' section for help. Terminal block not included.
- ▶ Ensure that the power capacity of the LED driver is greater than the total load of all the LED luminaire connected to it.
- ▶ The LED luminaire and cable should be protected by a fuse or equivalent device installed between the driver and LED luminaire and as close to the driver as possible.
- ▶ Ensure that the current capacity of cable connecting the LED luminaire to the driver is greater than the maximum drawn by the luminaire and the cut off of any over-current protection (fuse).

MECHANICAL

- ▶ Do not use the product if damaged. Do not use with worn or damaged wires or components.
- ▶ The product will generate heat during use. It should be installed in a well ventilated location.
- ▶ The light source is not replaceable; when the light source reaches its end of life the whole luminaire shall be replaced.
- ▶ These products contain a light source. For information on energy efficiency classification, please refer to the product listing.
- ▶ Products are dimmable only with specific dimmers or dimming methods.
- ▶ Protect the luminaire from mechanical damage. Take care not to dislodge any components during installation. Ensure that wires connecting the tubes cannot be pulled.
- ▶ Fully uncoil all cables. Do not cover or conceal.
- ▶ The luminaire should be mechanically supported with the recommended mounting accessories.
- ▶ To reduce the risk of strangulation the flexible wiring connected to this luminaire shall be effectively fixed to the wall if the wiring is within arm's reach.

ENVIRONMENTAL

- ▶ Ensure the product is installed and operated within the specified ambient temperature (Ta).
- ▶ For indoor use only.
- ▶ Only install in a location free from chemicals, corrosives, gases and flammable materials.

PRODUCT WARRANTY

1. A warranty period is provided for products in normal use. For any faults arising during the period that are confirmed to be quality related by inspection by the company, a product of the same specification will be replaced for free.
2. The warranty does not cover any of the following:
 - (1) Any product damage due to usage not allowed in the instructions.
 - (2) Any product damage due to disassembling or wrong operation by the user.
 - (3) Severe appearance damage or deformation of the product.

User Manual

Syndeo | LED Light Bars

IMPORTANT

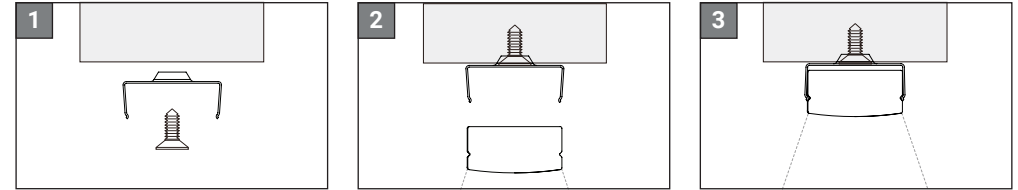
- ▶ Please read these instructions before commencing any work.
- ▶ Please retain these instructions & cable tag for future reference.
- ▶ Remove all packaging before connecting to power supply.
- ▶ If the cable tag is removed, ensure it is retained and stored safely.

INSTALLATION - SURFACE MOUNTED

Light bar SKU:

SYN-SMLB

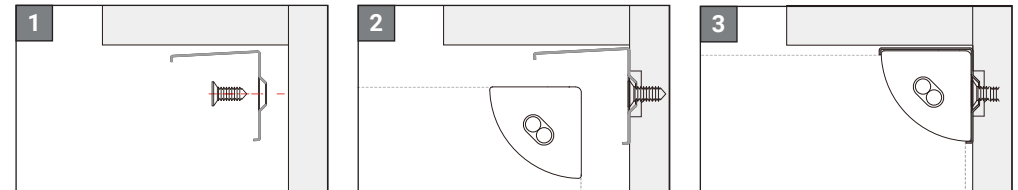
Note: 2PCS Mounting clips/M



Light bar SKU:

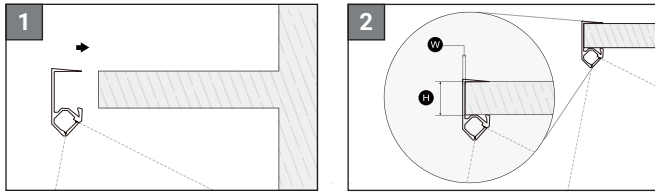
SYN-CRNLB

Note: 2PCS Mounting clips/M

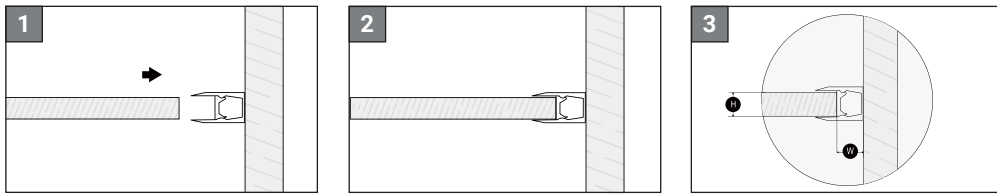


INSTALLATION - CLIP TO SHELF

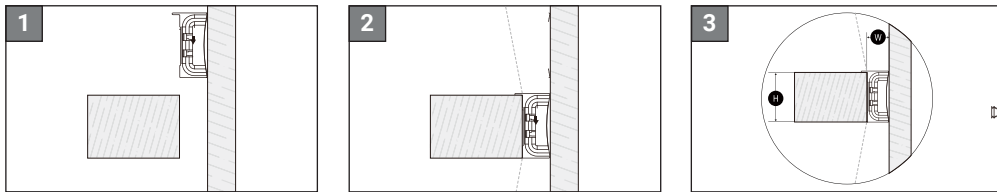
Light bar SKU:	Wooden Shelf Size	
	W	H
SYN-FSLB	1.5mm	18mm



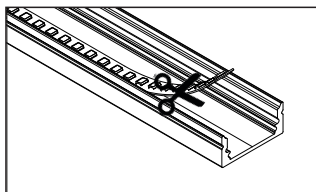
Light bar SKU:	Wooden Shelf Size	
	W	H
SYN-GSLB	10mm	8mm



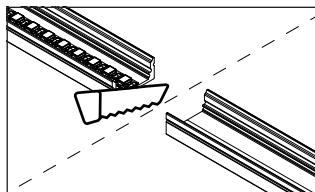
Light bar SKU:	Wooden Shelf Size	
	W	H
SYN-RSLB	8mm	18mm



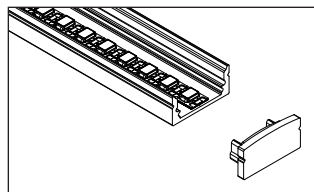
CUTTING DOWN THE LIGHT BARS



Peel back the LED strip and cut it to the required length using scissors.

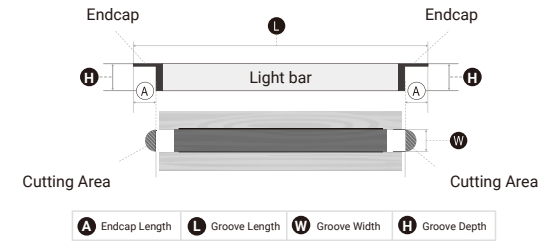


Use a saw to cut the aluminium profile to match the new length.

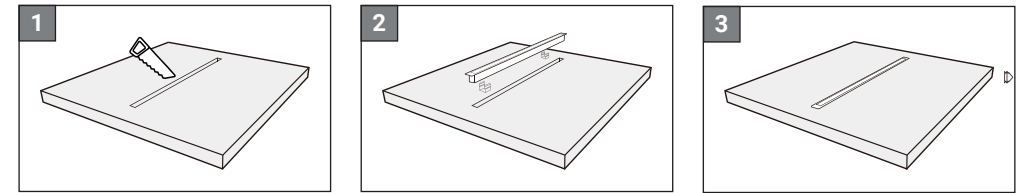


Refit the end cap onto the trimmed light bar.

INSTALLATION - RECESSED



Light bar SKU:	Endcap Length (A)	Groove Size=(L-2A+2)*W*H		Wooden Shelf Size	
		L-2A+16.7mm [0.26in.]	W	H	H
SYN-LB	5.5mm	11mm +2mm	10mm	10mm	10mm
SYN-ALB	5mm	10mm +2mm	15mm	10mm	10mm

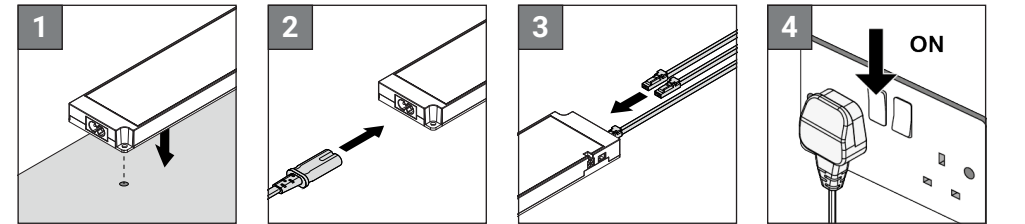


Make groove on the woden shelf base in the Light bar size.

Fix the clip to the Light bar and insert Light bar into the wooden groove.

Make sure the installation is well fixed by checking the planeness and firmness.

WIRING



Mount the driver. Make sure it within 1.5 metres of a wall socket.

Connect the power cable into the driver.

Connect the component into the driver via the ports.

Connect the plug into a wall socket and turn on.