

Precautions

Installation Notes

- Install in accordance with the IEE wiring regulations and building regulations.
- This product must be installed by a suitably competent person.
- To reduce the risk of strangulation the flexible wiring connected to this luminaire shall be effectively fixed to the wall if the wiring is within arm's reach

Electrical

- Do not connect directly to mains electrical supply.
- Switch the power off at the mains supply before installing or maintaining this fitting.
- Ensure others cannot restore the electrical power supply without your knowledge.
- Ensure the product is in good working condition. If there is visible damage do not use.
- This product must be used with a good quality SELV constant voltage LED driver. Ensure that the voltage output of the driver matches rated voltage of the LED flex.
- Connect the LED flex with correct polarity. Refer to the 'wiring' section for help. Terminal block not included.
- Ensure that the power capacity of the LED driver is greater than the total load of all the LED flex connected to it.
- The LED flex and cable should be protected by a fuse or equivalent device installed between the driver and LED flex and as close to the driver as possible.
- Ensure that the current capacity of cable connecting the LED flex to the driver is greater than the maximum drawn by the LED flex and the cut off of any over-current protection (fuse).
- These products contains a light source of energy efficiency class G please refer to product listing for detailed information.

Mechanical

- Do not use the product if damaged. Do not use with worn or damaged wires or components.
- The product will generate heat during use. It should be installed in a well ventilated location on a smooth surface. Fully uncoil the LED flex. Do not cover or conceal.
- The LED flex should be mechanically supported with the recommended mounting accessories. To reduce the risk of strangulation the flexible wiring connected to this luminaire shall be effectively fixed to the wall if the wiring is within arm's reach. Do not hang under its own weight.
- Do not twist, pull or stretch the LED flex. Only bend following the bend direction and minimum bend.
- Protect the LED flex from mechanical damage. Take care not to dislodge any components during installation. Ensure that wires connecting the LED flex cannot be pulled.
- The external flexible cable of this luminaire cannot be replaced; if the cord is damaged, the luminaire shall be destroyed.
- The light source of this luminaire is not replaceable; when the light source reaches its end of life the whole luminaire shall be replaced.

Environmental

- The product should be used in an environment where the ambient temperature is between -25°C ~ +55°C.
- For indoor use only. Only install in a location free from chemicals, gases and flammable materials.
- Avoid continuous exposure to UV light. Do not install in locations where it is subject to continuous movement.

Product Warranty

1. A warranty period is provided for products in normal use. For any faults arising during the period that are confirmed to be quality related by inspection by the company, a product of the same specification will be replaced for free.
2. The warranty does not cover any of the following:
 - (1) Any product damage due to usage not allowed in the instructions.
 - (2) Any product damage due to disassembling or wrong operation by the user.
 - (3) Severe appearance damage or deformation of the product.

LED Flex

► Professional 360° Rope

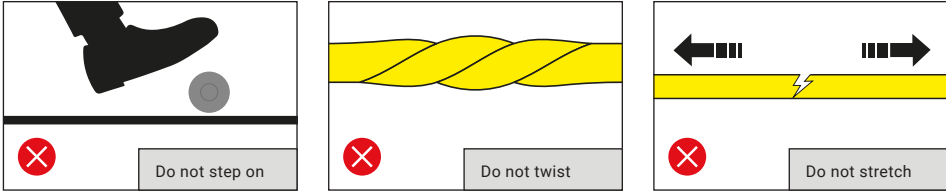
User Manual

IMPORTANT

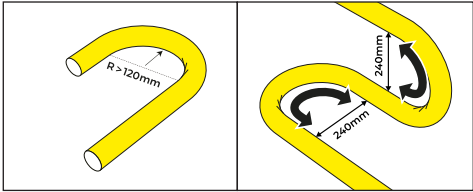
- Please read these instructions before commencing any work.
- Please retain these instructions for future reference.
- Please refer to product listing for detailed information.
- Remove all packaging before connecting to power supply.



Precautions

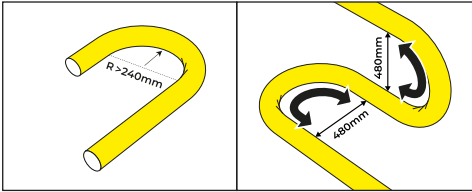


25x25mm



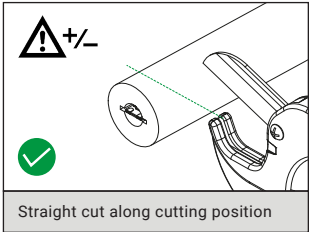
- ▶ Minimum bend radius: 120mm
- ▶ Minimum bend diameter: 240mm
- ▶ Horizontal and vertical bending.

40x40mm



- ▶ Minimum bend radius: 240mm
- ▶ Minimum bend diameter: 480mm
- ▶ Horizontal and vertical bending.

Cutting



Straight cut along cutting position

25x25mm Cut Points
▶ White: 11.97mm
▶ Single Colour: 41.67mm
▶ RGB: 50mm
▶ CCT: 11.97mm

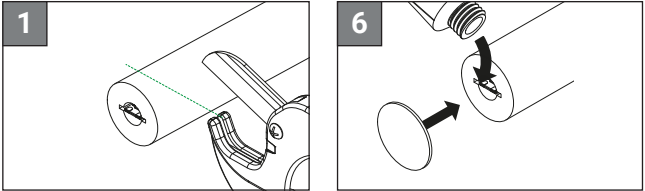
40x40mm Cut Points
▶ White: 41.67mm
▶ RGB: 50mm

TIP: we recommend using a pipe cutter to cut the LED flex. Use one firm press to cut cleanly through.

Mounting / Suspending

- ▶ This product can be mounted and suspended in a variety of ways.
- ▶ For more information on installation methods, visit the product page listing online.
- ▶ For information on installation details, refer to the accessories user manual or online tutorial videos.
- ▶ We recommend installation be carried out by at least 2 people.

Sealing

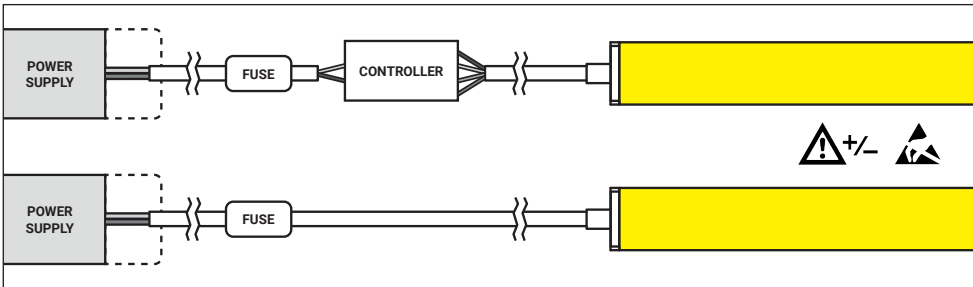


Cut the LED flex to the required length, measuring from one end following the cut points advised (see "Cutting").

Apply glue around the end and push end cap on.

NOTE: Allow 2-3 hours before handling and 24 hours for the glue to completely dry. Must not be exposed to moisture until the glue has completely dried. Use the correct glue. Do not use bathroom silicone sealant. Once glue has dried, inspect both ends and confirm that the endcap is fully sealed to the LED flex.

Wiring



WARNING: Check polarity (+/-) is correct before turning on. Incorrect polarity can cause damage to products.



Single Colour	
+V	Red
-V	Black

CCT	
+V	Black
-W	White
-WW	Yellow

RGB	
+V	Black
-R	Red
-G	Green
-B	Blue