

Intelligent Tunable White LED Driver (Constant Voltage)

- Housing made from SAMSUNG/COVESTRO's V0 flame retardant PC materials.
- Screwless wire-pressing flip cover design, with detachable end caps. The length of the shell can be adjusted as needed.
- Supports full-command NFC fast programming, allowing configuration via mobile app. Users can modify dimming mode, brightness range, DALI templates, and other settings through NFC, enabling data interaction with the driver.
- Provides two-channel independent SELV outputs.
- Supports DALI-2 DT6/DT8, PUSH DIM/CCT, and corridor light DIM/CCT modes.
- Compatible with L-Data and DALI Part 251, 252, 253.
- Constant power design ensures consistent brightness when adjusting different color temperatures.
- Supports deep dimming from 0-100%, with a minimum dimming level of 0.01%.
- Color temperature range can be set from 1000K to 10000K, with a default range of 2700K to 6500K.
- Supports Over-the-Air (OTA) online firmware updates for devices.
- Complies with the EU ERP Directive on energy efficiency, with no-load power consumption < 0.5W and network standby power consumption < 0.5W.
- Innovative thermal management technology for intelligent protection of power supply lifespan.
- Overheat, over voltage, overload, short circuit protection and automatic recovery.
- Suitable for Class I/II indoor light fixtures.
- Normal service life can reach 100,000 hours.
- 5-year warranty (Rubycon capacitor).



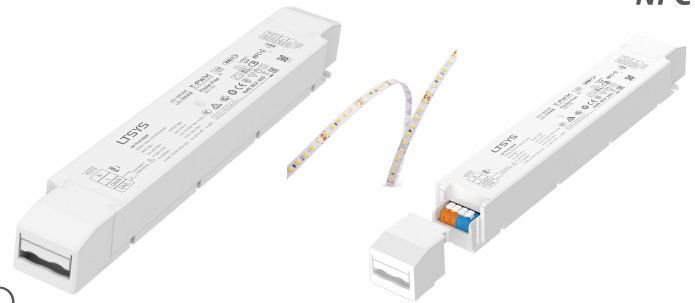
DIM/CCT

Flicker Free
IEEE1789

Dimmable:
1: 10000



L-Data 251/252/253



The certification icon represents undergoing certification applications only, and final certification qualification subject to actual product.

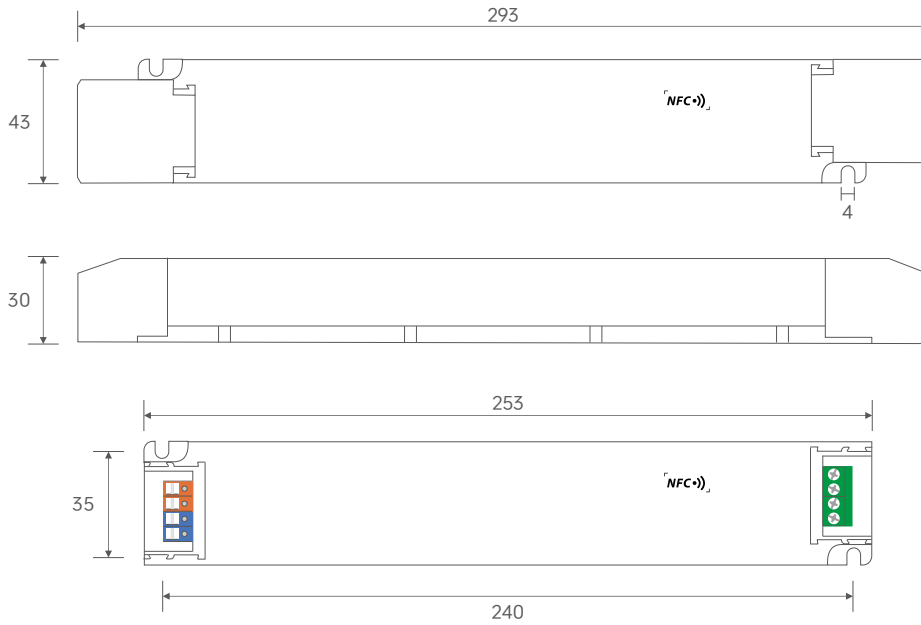
Technical Specs

Model	LM-75-24-G2D2F			
Features	Output Type	Constant voltage		
	Dimming Interface	DALI-2 DT6/DT8, PUSH DIM/CCT		
	Output Feature	Isolation		
	Protection Grade	IP20		
	Insulation Grade	Class II (Suitable for class I/ II /III light fixtures)		
OUTPUT	Output Voltage	24V $\overline{=}$		
	Output Voltage Range	24V \pm 0.5V $\overline{=}$		
	Output Current	Max. 3.125A		
	Output Power	Max. 75W		
	Output Power Range	0-75W		
	Strobe Level	High frequency exemption level		
	Dimming Range	0-100%, down to 0.01%		
	Overload Power Limitation	\geq 102%		
	Ripple	\leq 300mV		
PWM Frequency	300-22000Hz			
INPUT	Input AC Voltage	220-240V~		
	Input DC Voltage	220-240V $\overline{=}$ (EMI needs to be evaluated after the lamp is equipped.)		
	Frequency	50/60Hz		
	Input Current	Max. 0.4A/230V~		
	Power Factor	PF>0.98/230V~ (at full load)		
	THD	THD<10%@ 230V~(at full load)		
	Efficiency (Typ.)	92%		
	Inrush Current	Cold start 45A(Test twidth=300us tested under 50% Ipeak)/230Vac		
	Anti Surge	L-N: 2KV		
Leakage Current	Max. 0.5mA			
ENVIRONMENT	Working Temperature	ta: -20 ~ 50°C tc: 80°C		
	Working Humidity	20 ~ 95%RH, non-condensing		
	Storage Temperature/Humidity	-40 ~ 80°C, 10~95%RH		
	Temperature Coefficient	\pm 0.03%/°C(-20°C-50°C)		
	Vibration	10-500Hz, 2G 12mins/cycle, 72 min for X, Y and Z axes respectively		
PROTECTION	Overheat Protection	Intelligently adjust or turn off the output current if the PCB temperature \geq 110°C, and recover automatically		
	Overload Protection	Automatically protect the device when the load exceeds 102% of the rated power. Automatically recover once load is reduced		
	Short Circuit Protection	Enter hiccup mode if short circuit occurs, and recover automatically		
	Overvoltage Protection	No-load voltage \geq 28V; output turns off and can recover automatically.		
	Withstand Voltage	I/P-O/P:3750V~		
SAFETY & EMC	Insulation Resistance	I/P-O/P: 100MQ/500VDC/25°C/70%RH		
	Safety Standards	CCC	China	GB19510.1, GB19510.14, GB19510.213
		TUV	Germany	EN61347-1, EN61347-2-13, EN62493
		CB	CB Member States	IEC61347-1, IEC61347-2-13
		CE	European Union	EN61347-1, EN61347-2-13, EN62384
		EAC	Russia	IEC61347-1, IEC61347-2-13
		RCM	Australia	AS 61347-1, AS 61347-2-13
		ENEC	Europe	EN61347-1, EN61347-2-13, EN62384
	EMC Emission	CCC	China	GB/T17743, GB17625.1
		CE	European Union	EN55015, EN61000-3-2, EN61000-3-3, EN61547
		EAC	Russia	IEC62493, IEC61547, EH55015
		RCM	Australia	EN55015, EN61000-3-2, EN61000-3-3, EN61547
	EMC Immunity	EN61000-4-2,3,4,5,6,8,11,EN61547		
	ErP	Power Consumption	Networked standby	< 0.5W (After switching on/off via command)
			No-load power consumption	< 0.5W(When the lamp is not connected)
Flicker/Stroboscopic Effect		IEEE1789	Meet IEEE 1789 standard/High frequency exemption level	
		CIE SVM	PstLM \leq 1.0, SVM \leq 0.4	
OTHERS	DF	Phase factor	DF \geq 0.9	
	Weight(N.W.)	290g \pm 10g		
	Dimensions	293 \times 42.5 \times 30mm(L \times W \times H)		

This driver is suitable for connecting LED lighting fixtures with resistor current limiting (such as LED light strips). If it is connected to a fixture with built-in constant current IC for current limiting, an instantaneous inrush current dozens of times higher will be generated, causing the driver to activate overload protection (hiccup and strobing). When placing an order, such fixtures with built-in constant current IC for current limiting (e.g., MR16 bulbs, underground lights, wall washers, constant current hard light strips, etc.) need to be specified to facilitate the burning of a special program.

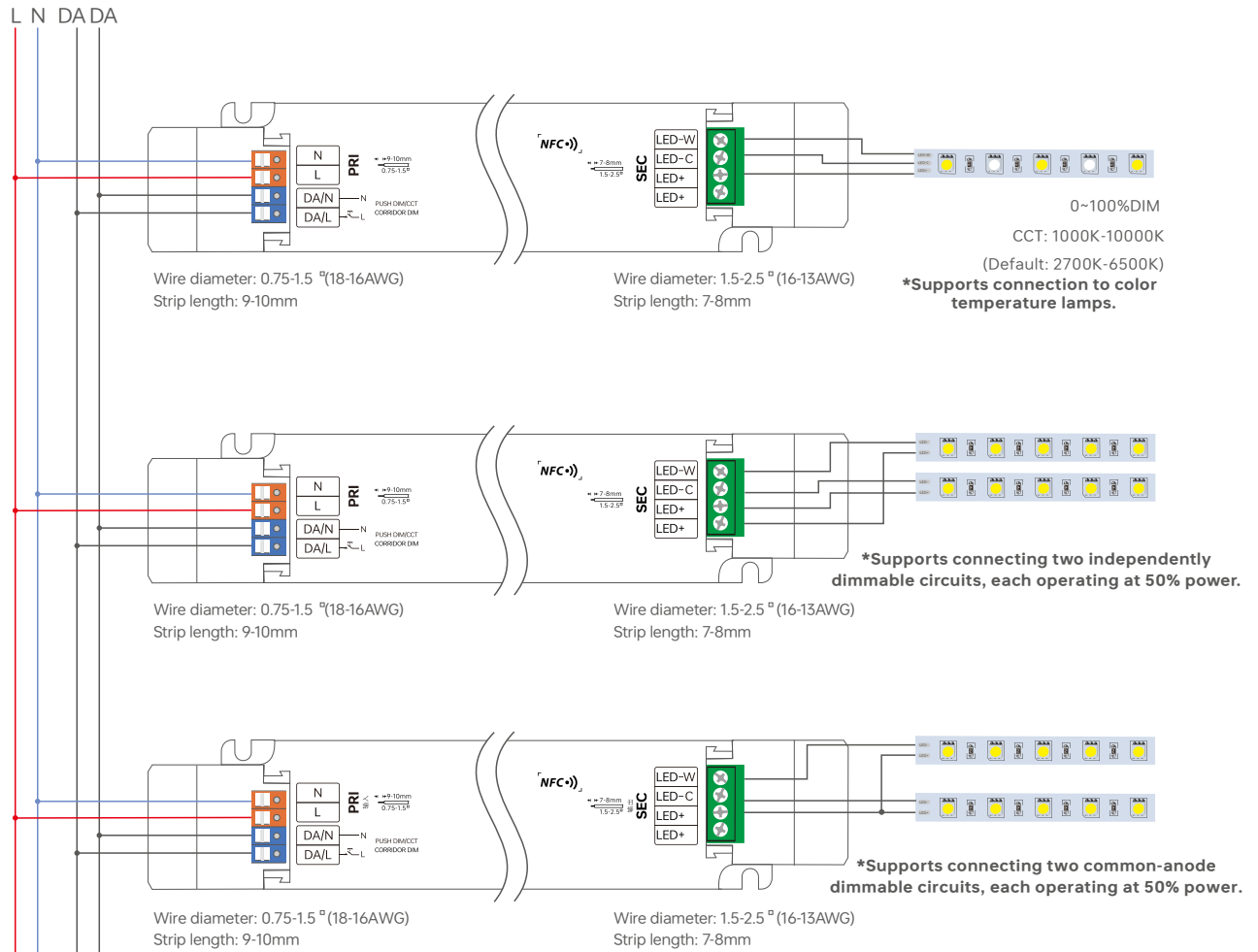
Product Size

Unit:mm



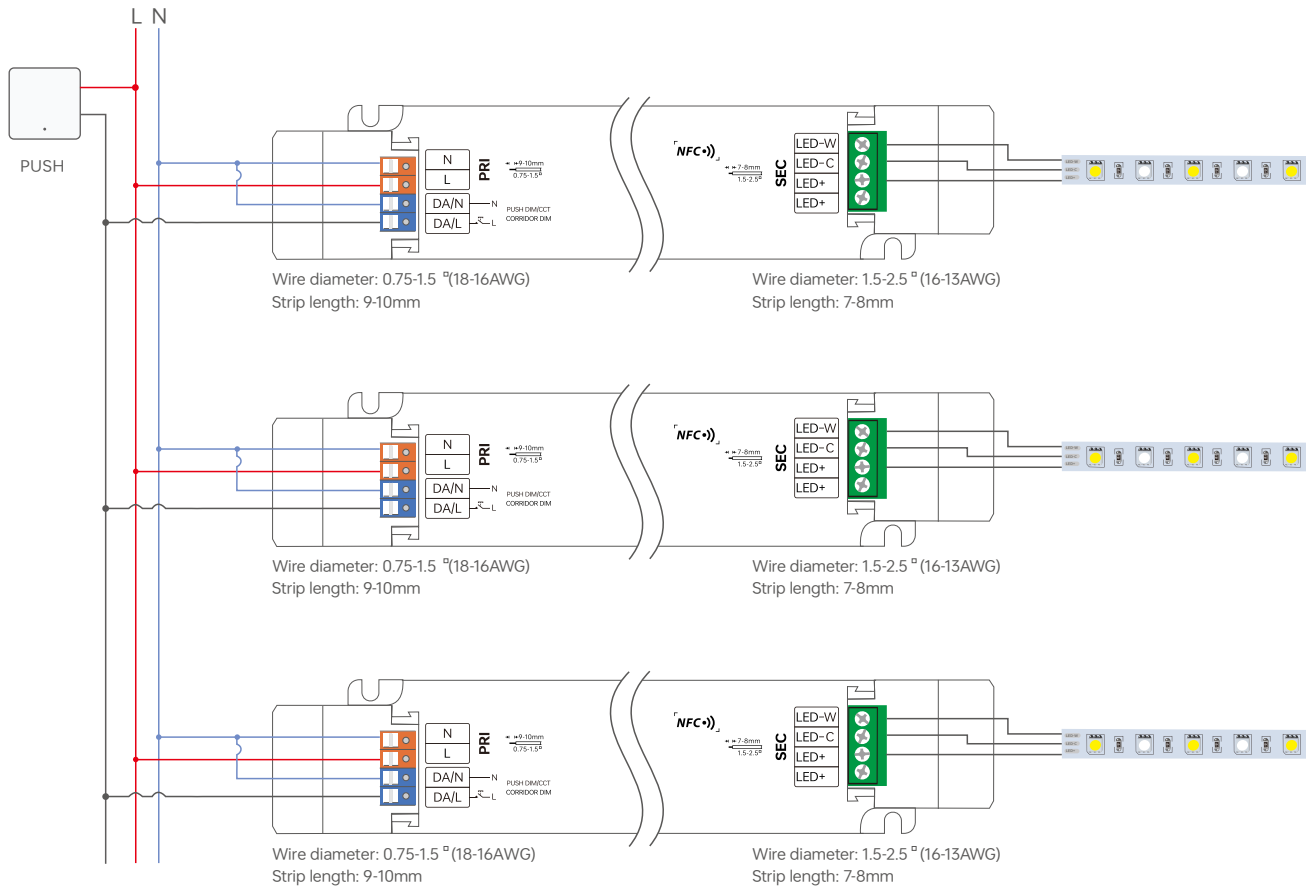
Wiring Application Diagram

DALI Connection Method



*Power supplies of different models/wattages vary in hardware. Do not use them for dimming the same light film/light box to avoid inconsistent light activation and dimming. Recommend matching the same light film/light box with a power supply of the same model for consistent dimming.

PUSH DIM/CCT Connection



- * Dimmer buttons are disabled under DC voltage input.
- * Dimming interface priority: DALI takes precedence over PUSH DIM/CCT.
- * Power supplies of different models/wattages vary in hardware. Do not use them for dimming the same light film/light box to avoid inconsistent light activation and dimming. Recommend matching the same light film/light box with a power supply of the same model for consistent dimming.

Switch to PUSH Mode:

Method 1: If the corridor light has been switched to the PUSH mode, you can connect the circuit according to the Push DIM wiring diagram. Press the reset switch briefly 5 times within 3 seconds, then hold it down for 6 seconds, and then press it briefly 5 times within 3 seconds. The driver will automatically switch to the PUSH mode.

Method 2: If the corridor light has been switched to the PUSH mode, it can be switched to the PUSH mode through the NFC Lighting app.

Note: If it is not connected to the DALI main controller, the factory default mode is PUSH.

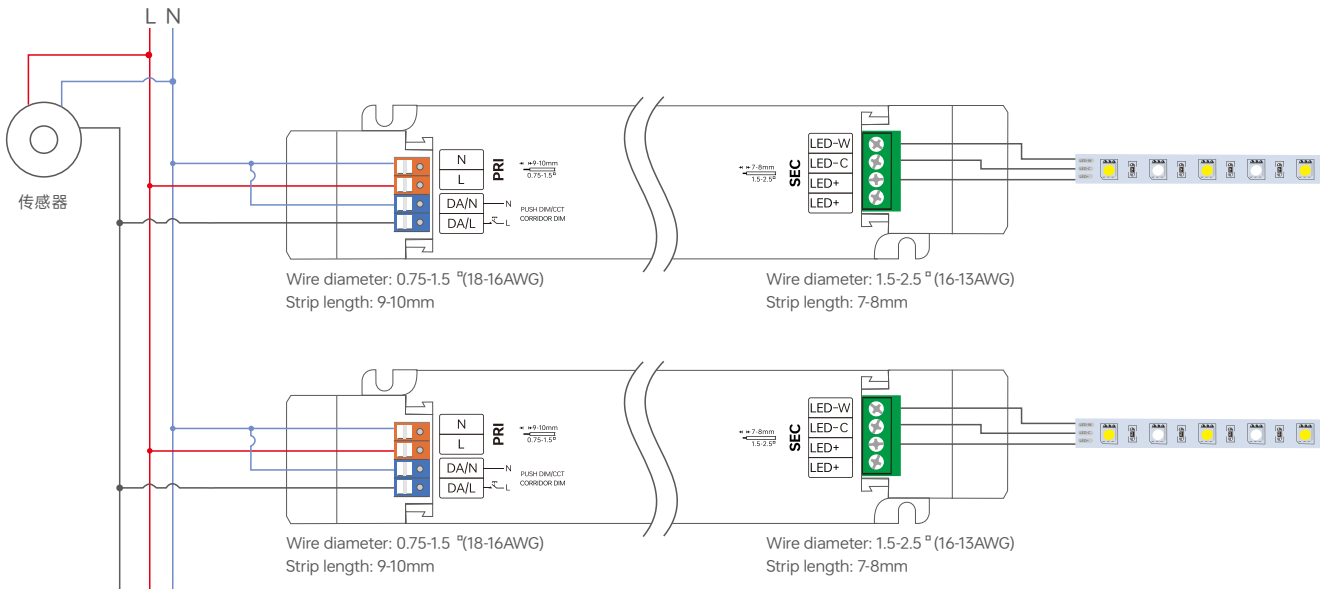
PUSH DIM/CCT



Reset Switch

- Short press : on/off control.
- Double-click: Double press: Switch brightness/color temperature mode.
- Long press : Adjust the current mode.
- Dimming memory : Upon being switched on again, the light resumes the previously set brightness level.

Corridor light Connection



*Dimmer buttons are disabled under DC voltage input.
 *Dimming interface priority: DALI takes precedence over Corridor Mode.
 *Power supplies of different models/wattages vary in hardware. Do not use them for dimming the same light film/light box to avoid inconsistent light activation and dimming. Recommend matching the same light film/light box with a power supply of the same model for consistent dimming.

Switch to the corridor light mode

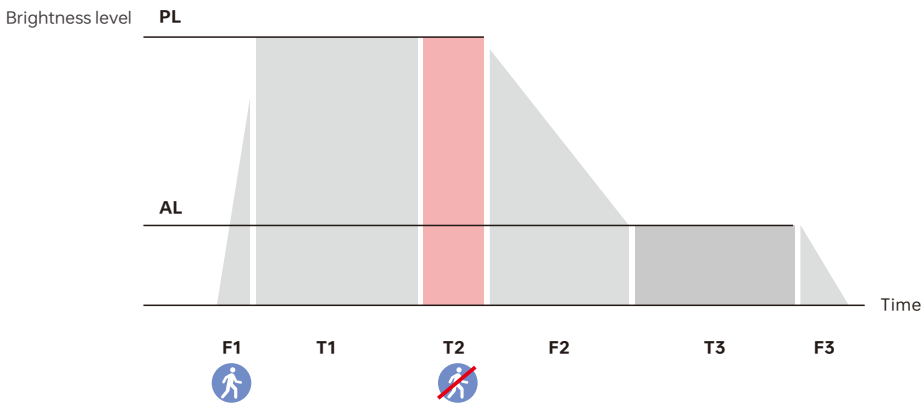
Method 1: Configure and switch the corridor light function via NFC, and the Push function will be turned off.

Method 2: After connecting the wires according to the corridor dimming wiring diagram, keep moving within the effective sensing area for more than 2 minutes, and it will automatically switch to the corridor dimming mode with all lights on at full brightness.

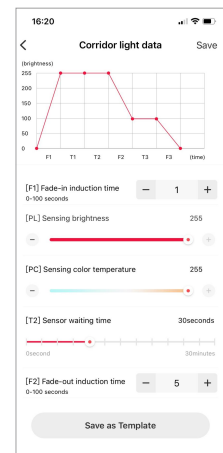
Method 3: After connecting the wires according to the corridor dimming wiring diagram, first replace the sensor with a common switch, then turn on the common switch and keep it conducting for 2 minutes. The driver will automatically switch to the corridor dimming mode. After that, remove the common switch and replace it with the sensor again.

Note: During normal operation, it is recommended to set the hold-time of the motion sensor to the minimum. It is necessary to select a motion sensor with an AC switch.

Corridor Dimming Working Process



Name	Default	Setting Range
(F1) Fade-in Detection Time	1 s	0-100 s
(PL) Detection Brightness	255	0-255
(PC) Detection Color Temperature	0	0-255
(T1) Induction Hold Time	Set via the sensor	
(T2) Delay Time	30 s	0 s,5 s,10 s,20 s,30 s,45 s,1 min, 2 min, 3 min,5 min,10 min,20 min,30 min
(F2) Gradual Exit Sensing Time	1 s	0-100 s
(AL) Hold Brightness Level	100	0-255
(AL) Hold Color Temperature	0	0-255
(T3) Detection Hold Time	30 s	0 s,5 s,10 s,20 s,30 s,45 s,1 min,2 mins,3 mins,5 mins, 10 mins,20 mins,30 mins,Permanent
(F3) Fade-out Time to Off	1 s	0-100 s

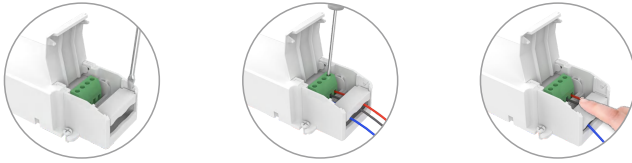


Note: *If the light needs to maintain a low brightness hold, please set the [T3] Detection Hold Time to Permanent.

*The above parameters are set through the NFC lighting APP.

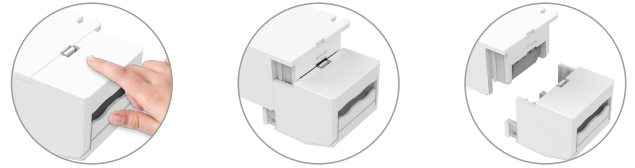
Protective Housing Application Diagram

Tension plate



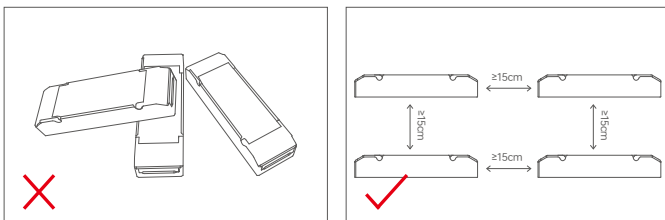
1. Pry up the protecting housing in the side plate position with a tool.
2. Connect to electrical wires with a screwdriver as wiring diagram shows.
3. Press down the tension plate to fix the the electrical wires, then close the protective housing.

Remove the protective housing

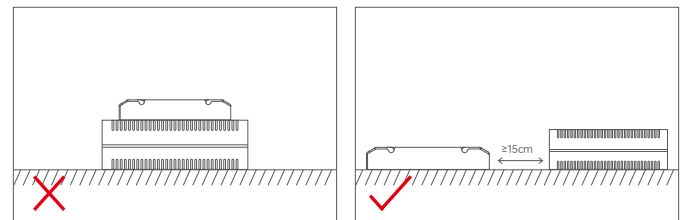


Pull the housing left and right from the bottom to remove it.

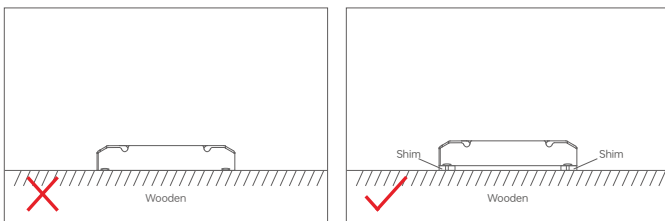
Installation Precautions



Please do not stack the products. The distance between two products should be $\geq 15\text{cm}$ so as not to affect heat dissipation and the lifespan of the products.



Please not place the products on LED drivers. The distance between the product and the driver should be $\geq 15\text{cm}$ so as not to affect heat dissipation and shorten the lifespan of the products.



Please do not fasten the product screws tightly against the wooden board. Instead, add a washer of $\geq 7\text{mm}$ under the fixing screws. Leaving a gap can effectively dissipate heat, preventing any impact on the product's heat dissipation and service life.

Use the NFC Lighting APP

Scan the QR code below with your mobile phone and follow the prompts to complete the APP installation (According to performance requirements, you need to use a NFC-capable Android phone, or an iPhone 8 and later that are compatible with iOS 13 or higher).



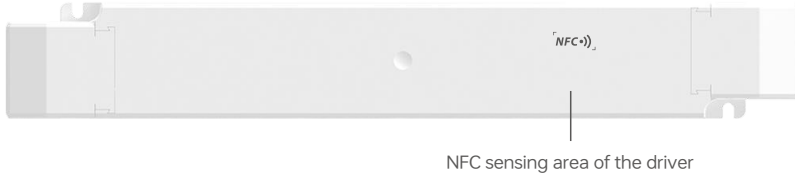
* Before you begin setting the parameters of the driver, please make sure the driver is powered off.

Read/Write the LED driver

Use your NFC-capable phone to read LED driver data, then edit the parameters and they can be directly written to the driver

1. Read the LED driver

On the APP home page, click [Read/Write LED driver], then keep the programmer's sensing area close to the NFC logo of the driver to read the driver parameters.

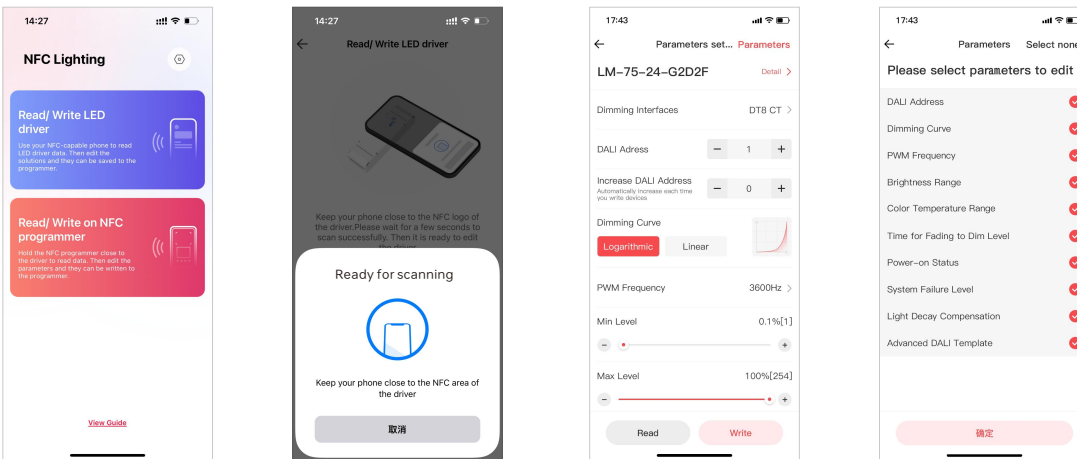


2. Edit parameters

Click on [Parameter Management] to edit more advanced parameters such as DALI address, dimming curve, PWM brightness range, brightness range, color temperature range, dimming gradient time, power status, system failure status, corridor light, and DALI template Settings.

3. Write to the drive

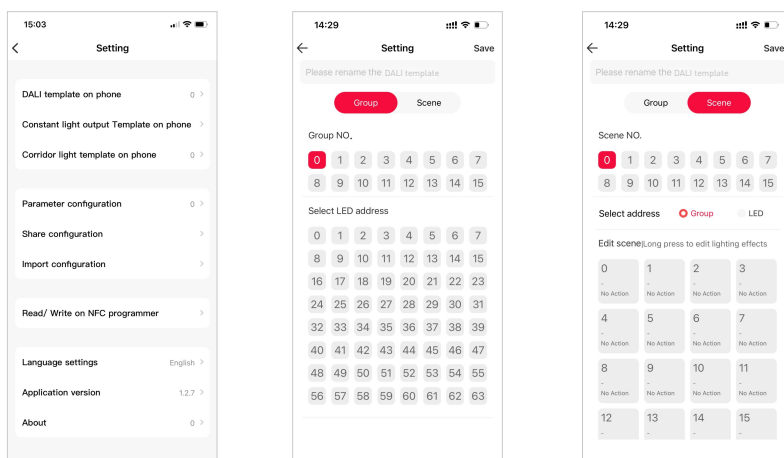
After completing the parameter settings, click [Write] in the upper right corner, and keep the programmer's sensing area close to the NFC logo of the driver, so the parameters can be written to the driver



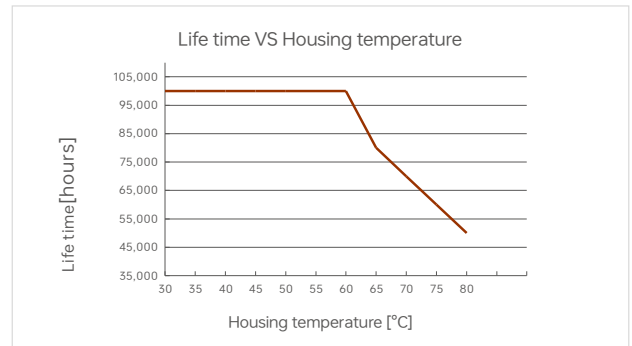
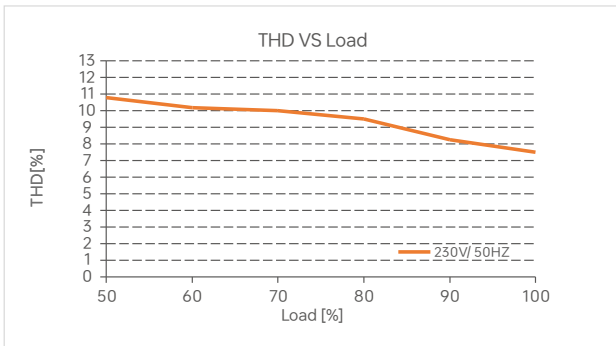
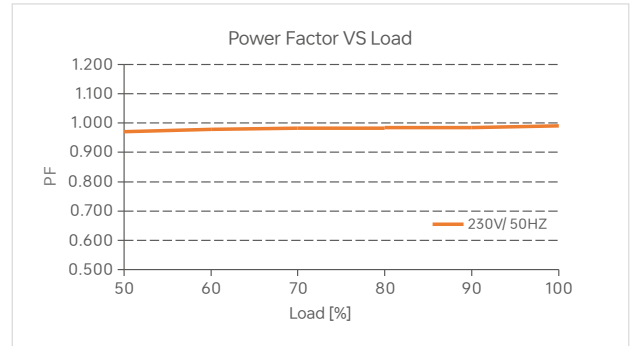
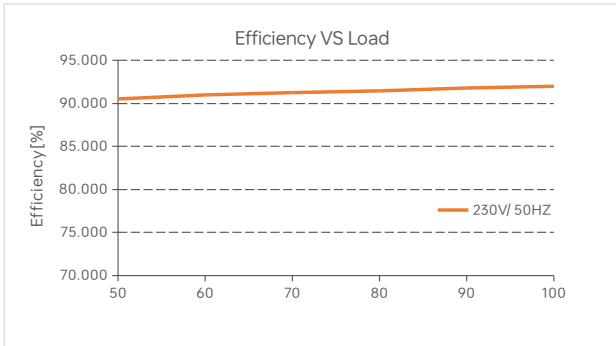
Advanced DALI template

Integrate the functions of the DALI lighting system, edit the DALI group and lighting effects for scenes, then save them in the advanced template to achieve lighting programming.

Setup page (for Read/Write LED driver) : Go to App home page — [🔗] icon in the top right — [DALI template on phone] .



Relationship Diagrams



LM-75-24-G2D2F

Surge Current & Corresponding Miniature Circuit Breaker (MCB) Load Capacity Table

MCB Model	B10	B13	B16	B20	B25	C10	C13	C16	C20	C25	D10	D13	D16	D20	D25
Maximum Load Capacity	5	7	8	10	13	8	9	10	12	15	11	12	13	16	19

Remarks:

1. Test Conditions: Cold start 45A(Test twidth=300us tested under 50% Ipeak)/230V ~ .
2. The number of supported drivers may vary depending on the brand and model of the MCB.
3. It is recommended not to exceed the specified load capacity during on-site installation. The actual load should be determined based on field conditions.
4. If the ambient temperature exceeds 30°C or multiple MCBs are installed side by side, the number of installed drivers must be reduced and recalculated accordingly.
5. Electricians typically use Type B MCBs for residential lighting and Type C MCBs for commercial lighting applications.
6. Different testing equipment may yield variations in measured current peaks and pulse widths. Always use professional-grade instruments for accurate testing.

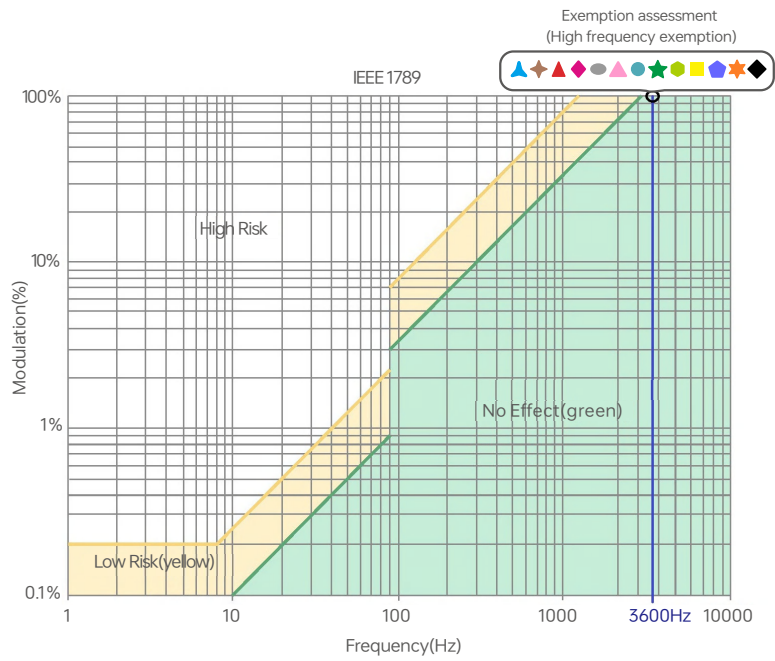
Flicker Test Table

IEEE 1789

Limit Value of Modulation in Low Risk Areas	
Waveform frequency of Optical output (f)	Limit value (%)
$f \leq 8\text{Hz}$	0.2
$8\text{Hz} < f \leq 90\text{Hz}$	$0.025 \times f$
$90\text{Hz} < f \leq 1250\text{Hz}$	$0.08 \times f$
$f > 1250\text{Hz}$	Exemption assessment
Limit Value of Modulation in No Effect Areas	
Waveform frequency of Optical output (f)	Limit value (%)
$f \leq 10\text{Hz}$	0.1
$10\text{Hz} < f \leq 90\text{Hz}$	$0.01 \times f$
$90\text{Hz} < f \leq 3125\text{Hz}$	$(0.08/2.5) \times f$
$f > 3125\text{Hz}$	Exemption assessment (High frequency exemption)

Brightness

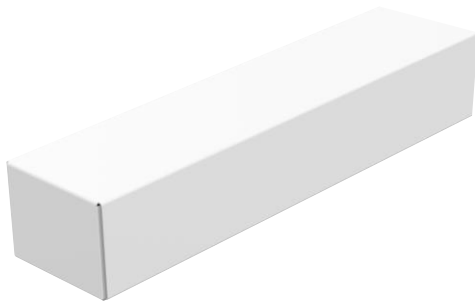
- ▲ 0.1%
- ◆ 1%
- ▲ 5%
- ▲ 10%
- 20%
- 30%
- 40%
- ★ 50%
- 60%
- 70%
- 80%
- ★ 90%
- ◆ 100%



Packaging Specification

Model	LM-75-24-G2D2F
Packaging box size	315×215×240mm(L×W×H)
Quantity	10PCS per layer, 3 layers per box, 30PCS per box
Weight	0.29kg per PC, 9.6kg±5% per box

Packaging Style Drawing



Inner packaging box



Full box packaging

Transportation and Storage

1. Transportation

Products can be shipped via vehicles, boats and planes.

During transportation, products should be protected from rain and sun. Please avoid severe shock and vibration during the loading and unloading process.

2. Storage

The storage conditions should comply with the Class I Environmental Standards. The products that have been stored for more than six months are recommended to be re-inspected and can be used only after they have been qualified.

Attentions

- Product installation and commissioning should be done by a qualified professional.
- LTECH products are and not lightningproof non-waterproof (special models excepted). Please avoid the sun and rain. When installed outdoors, please ensure they are mounted in a water proof enclosure or in an area equipped with lightning protection devices.
- Good heat dissipation will prolong the working life of products. Please ensure good ventilation.
- Please check if the working voltage used complies with the parameter requirements of products.
- The diameter of wire used must be able to load the light fixtures you connect and ensure the firm wiring.
- Before you power on products, please make sure all the wiring is correct in case of incorrect connection that causes damage to light fixtures.
- If a fault occurs, please do not attempt to fix products by yourself. If you have any question, please contact your suppliers.
- * This manual is subject to changes without further notice. Product functions depend on the goods. Please feel free to contact our official distributors if you have any question.

Warranty Agreement

- Warranty periods from the date of delivery: 5 years.
- Free repair or replacement services for quality problems are provided within warranty periods.

Warranty exclusions below:

- Beyond warranty periods.
- Any artificial damage caused by high voltage, overload, or improper operations.
- Products with severe physical damage.
- Damage caused by natural disasters and force majeure.
- Warranty labels and barcodes have been damaged.
- No any contract signed by LTECH.

1. Repair or replacement provided is the only remedy for customers. LTECH is not liable for any incidental or consequential damage unless it is within the law.
2. LTECH has the right to amend or adjust the terms of this warranty, and release in written form shall prevail.

Update Log

Version	Updated Time	Update Conten	Updated by
A0	20250730	Original version	Shaoyun He