

Precautions

Installation Notes

- ▶ Install in accordance with the IEE wiring regulations and building regulations.
- ▶ This product must be installed by a suitably competent person.
- ▶ To reduce the risk of strangulation the flexible wiring connected to this luminaire shall be effectively fixed to the wall if the wiring is within arm's reach.

Electrical

- ▶ Do not connect directly to mains electrical supply.
- ▶ Switch the power off at the mains supply before installing or maintaining this fitting.
- ▶ Ensure others cannot restore the electrical power supply without your knowledge.
- ▶ Ensure the product is in good working condition. If there is visible damage do not use.
- ▶ This product must be used with a good quality SELV constant voltage LED driver. Ensure that the voltage output of the driver matches rated voltage of the LED flex.
- ▶ Connect the LED flex with correct polarity. Refer to the 'wiring' section for help. Terminal block not included.
- ▶ Ensure that the power capacity of the LED driver is greater than the total load of all the LED flex connected to it.
- ▶ The LED flex and cable should be protected by a fuse or equivalent device installed between the driver and LED flex and as close to the driver as possible.
- ▶ Ensure that the current capacity of cable connecting the LED flex to the driver is greater than the maximum drawn by the LED flex and the cut off of any over-current protection (fuse).
- ▶ These products contain a light source. For information on energy efficiency classification, please refer to the product listing.
- ▶ Products are dimmable only with specific dimmers or dimming methods.

Mechanical

- ▶ Do not use the product if damaged. Do not use with worn or damaged wires or components.
- ▶ The product will generate heat during use. It should be installed in a well ventilated location on a smooth surface. Fully uncoil the LED flex. Do not cover or conceal.
- ▶ The LED flex should be mechanically supported with the recommended mounting accessories.
- ▶ Do not hang under its own weight.
- ▶ Do not twist, pull or stretch the LED flex. Only bend following the bend direction and minimum bend.
- ▶ Protect the LED flex from mechanical damage. Take care not to dislodge any components during installation. Ensure that wires connecting the LED flex cannot be pulled.
- ▶ The light source is not replaceable; when the light source reaches its end of life the whole luminaire shall be replaced.

Environmental

- ▶ Connectors must be assembled correctly in order to obtain a IP65 rating. Not suitable for permanent outdoor installation.
- ▶ Only install in a location free from chemicals, gases and flammable materials.
- ▶ Avoid continuous exposure to UV light.
- ▶ Do not install in locations where it is subject to continuous movement.

Product Warranty

1. A warranty period is provided for products in normal use. For any faults arising during the period that are confirmed to be quality related by inspection by the company, a product of the same specification will be replaced for free.
2. The warranty does not cover any of the following:
 - (1) Any product damage due to usage not allowed in the instructions.
 - (2) Any product damage due to disassembling or wrong operation by the user.
 - (3) Severe appearance damage or deformation of the product.



Quick Connect Vertical Circ Series LED Neon Flex

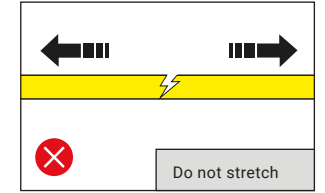
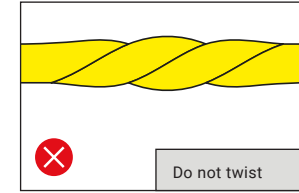
tagra®

User Manual

IMPORTANT

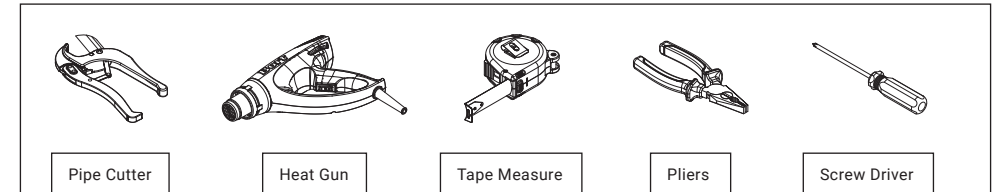
- ▶ Please read these instructions before commencing any work.
- ▶ Please retain these instructions & cable tag for future reference.
- ▶ Please refer to product listing for detailed information.
- ▶ Remove all packaging before connecting to power supply.
- ▶ If the cable tag is removed, ensure it is retained and stored safely.

Precautions



SKU	CCT	Bending	Min. Bend Diameter	Cut Points	Ta	Max. Run	Size
NEONCIRC18	White	Vertical	120mm	83.33mm	45°C	15M	18x18mm
NEONCIRC18-SC	Single Colour	Vertical	120mm	83.33mm	45°C	15M	18x18mm
NEONCIRC18-RGB	RGB	Vertical	120mm	55.55mm	45°C	15M	18x18mm

Installation Tools



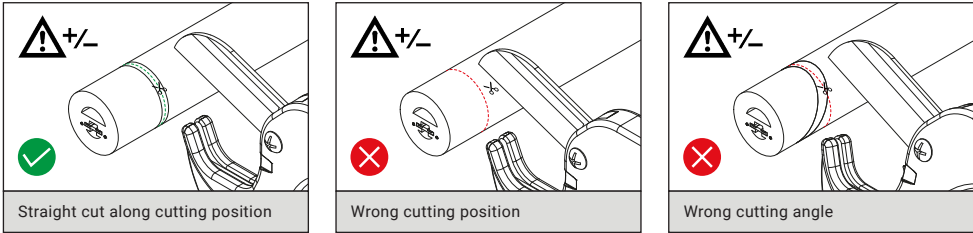
NOTE: Please refrain from placing the reel directly on the ground and avoid dragging or pulling to prevent damage.



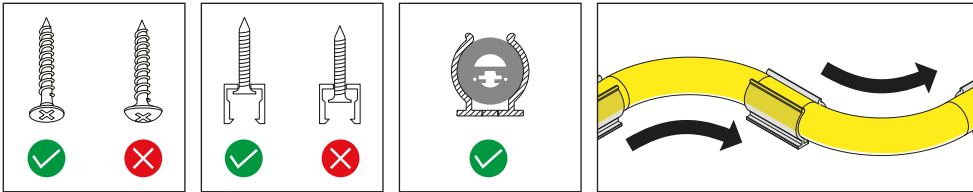
v7

Cutting

TIP: we recommend using a pipe cutter to cut the LED flex. Use one firm press to cut cleanly through.

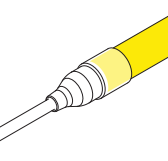
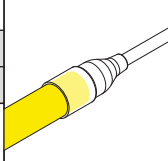


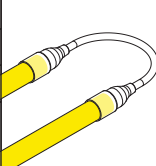
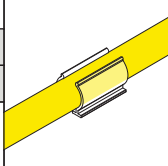
Mounting / Installation



1. Install mounting channel with countersunk screws. Use appropriate fixings depending on the mounting surface.
2. Ensure that the mounting channel is securely held by the screws.
3. Install the LED flex in the correct position making sure it is properly seated in the mounting channel.
4. Use multiple mounting brackets to achieve bends and shapes with the LED flex.
5. We recommended installation be carried out by at least 2 people.

Accessories

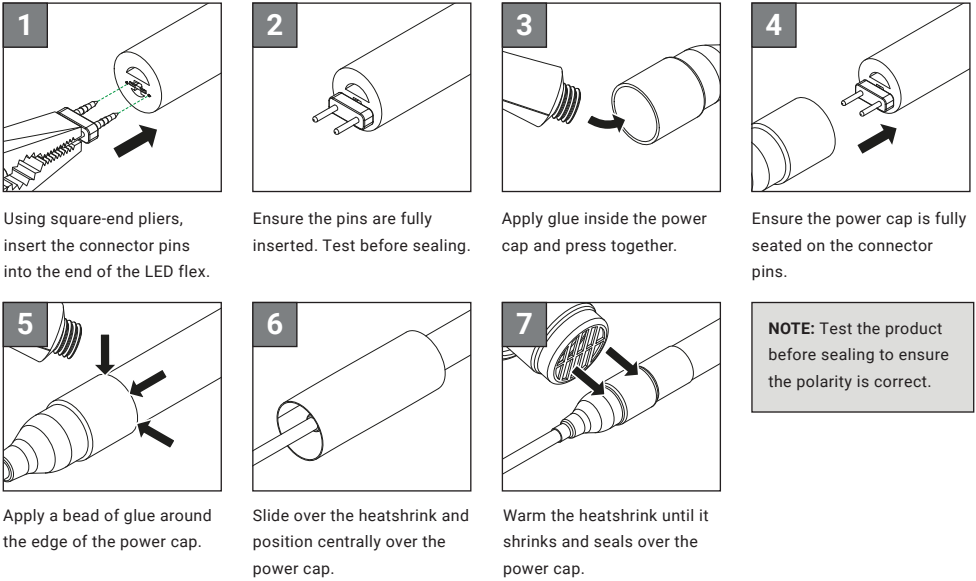
Power Cord & End Cap Kit		Reverse Power Cord & End Cap Kit	
NEONCIRC18-ACCPCK		NEONCIRC18-ACCPCK-REV	
NEONCIRC18-ACCPCK-RGB		NEONCIRC18-ACCPCK-REV-RGB	
Contains: Power Cord, End Cap, 4x Connector Pins, Glue, 2x Heat Shrink			

Mid Joint Connector Kit		Body Mounting Bracket	
NEONCIRC18-MJOINT-ACCPCK		NEONCIRC18-BRACKET	
NEONCIRC18-MJOINT-ACCPCK-RGB			
Contains: Connecting Cable, 4x Connector Pins, Glue, 2x Heat Shrink			

Contains: Pack of 20 Mounting Bracket	
---------------------------------------	--

NOTE: Cutting the LED neon flex will affect its waterproof performance. Follow the sealing process to ensure IP rating.

Wiring & Sealing



NOTE: Allow 2-3 hours before handling and 24 hours for the glue to completely dry. Must not be exposed to moisture until the glue has completely dried. Use the correct glue. Do not use bathroom silicone sealant. Once glue has dried, inspect both ends and confirm that the endcap is fully sealed to the LED flex.

WARNING: This product must be installed by a suitably competent person. Check polarity (+/-) is correct before turning on. Incorrect polarity can cause damage to products.

Single Colour		RGB	
+V	Red	+V	Black
-V	Black	-R	Red
		-G	Green
		-B	Blue

Polarity

