

Precautions

Installation Notes

- Install in accordance with all local wiring regulations and building regulations.
- This product must be installed and serviced by a qualified professional.

IMPORTANT

- Please read prior to installation.
- Please read these instructions carefully before commencing any work.
- Please retain these instructions for future reference.
- Only compatible with Syndeo products.

Electrical

- Switch the power off at the mains supply before installing or maintaining this fitting.
- Ensure others cannot restore the electrical power supply without your knowledge.
- Only install compatible constant voltage LED fixtures and controls. 12V products should be used with a 12V driver and 24V products should be used with a 24V driver. Contact technical support or visit the product page for compatible products.
- Ensure that the power capacity of the LED driver is greater than the total load of all the connected products.
- Do not overload the power supply.
- The maximum length of output cable to the light source should not exceed 3.5 metres.
- Use only with an approved Syndeo mains lead.
- Do not install if the product has visible damage.
- Do not modify or disassemble the product beyond instructions or the warranty will be void.

Mechanical

- The driver will generate heat during use. It should be installed in a well ventilated location free from explosive gases and vapours and mounted to a surface that will dissipate this heat i.e. metal, not wood or plastic.
- The driver should be fixed to a surface using fixing points.
- Protect the driver from mechanical damage. Take care not to dislodge any components during installation. Ensure that cables connected to the driver cannot be pulled and are secured to provide strain relief.
- Do not over tighten screws when mounting the driver.

Environmental

- The product should only be used in an environment with an ambient temperature between +5°C to +40°C.
- The temperature of the LED driver should never exceed 60°C when in operation.
- IP20 drivers are not waterproof and can only be installed indoors and with humidity of no more than 55%.
- Keep away from moisture and only use in dry locations.
- Install in a location without chemicals like sulphur, acid and halogen present.
- Avoid direct exposure to sunlight and protect cables from UV rays.
- Do not dispose with the household waste.

Product Warranty

1. A warranty period is provided for products in normal use. For any faults arising during the period that are confirmed to be quality related by inspection by the company, a product of the same specification will be replaced for free.
2. The warranty does not cover any of the following:
 - (1) Any product damage due to usage not allowed in the instructions.
 - (2) Any product damage due to disassembling or wrong operation by the user.
 - (3) Severe appearance damage or deformation of the product.

Syndeo Plug & Play

► Multi-Port LED Driver



User Manual



WARNING

Shock hazard. May result in serious injury or death. Isolate supply before installation. Complete electrical safety checks before commissioning. Inspect regularly in accordance with local regulations



WARNING

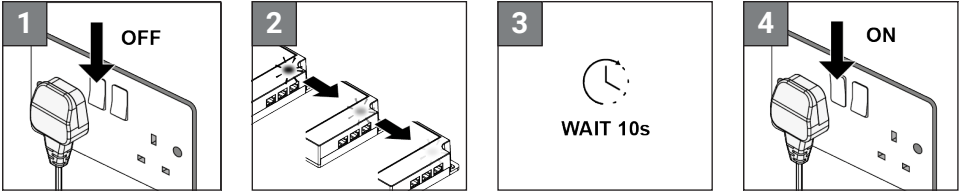
Risk of fire. Ensure correct cable sizing, over-current protection, ventilation and keep away from combustible materials.



Wiresafe

The ports on Syndeo driveres are protected by “Wiresafe”. This is a unique feature that protects Syndeo cables and accessories from becoming overloaded. Wiresafe will activate if the current on any of the ports exceeds 2.5A. When active, the driver will shutdown all the ports. The driver must then be reset to continue normal operation.

Resetting



Turn off power to the driver. Wait for the red light on top of the driver to fade to off. Once red light is off, wait a further 10 seconds. Turn on power to the driver.

Ports & Current

Port	Max. Current Per Port	Voltage	Max. Current	Max. Wattage	Max. Wattage Per Port (6 Ports)
P1	2.5A	12V	2.5A	30W	5W
P2	2.5A	12V	5.0A	60W	10W
P3	2.5A	12V	6.67A	80W	13.3W
P4	2.5A	24V	1.25A	30W	5W
P5	2.5A	24V	2.5A	60W	10W
P6	2.5A*	24V	3.33A	80W	13.3W

* Cut-off is shared between both ports.

Wattage Guide

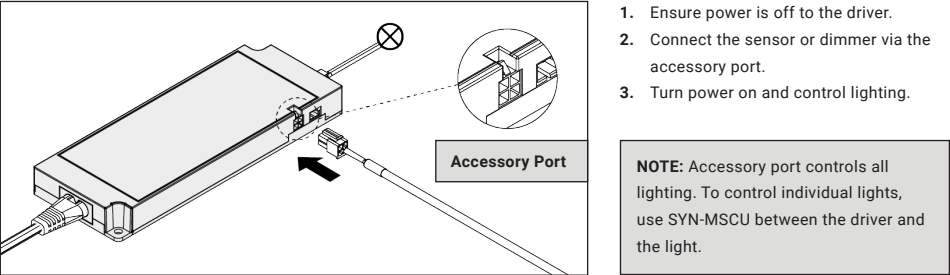
Strip Light Wattage	3M Length	Recommended Driver	5M Length	Recommended Driver
4.8W per metre	15.8W	30W	26.4W	30W
9.6W per metre	31.7W	60W	52.8W	60W

To find out the correct wattage driver needed, take the wattage per metre and times it by the number of metres being used. Take this figure and add on 10% to find the maximum wattage. Round this figure up to the nearest driver wattage.
Example: 4.8W per metre x 5 metres = 24W ➤ 24W + 10% = 26.4W ➤ 26.4W rounded to the nearest driver = 30W

NOTE: When using a splitter, add up all the accessories connected to that splitter to find the total wattage.

Sensors & Dimmers

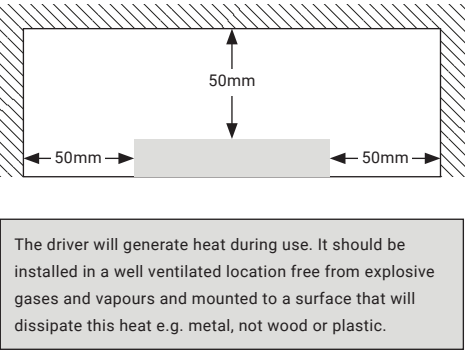
An accessory port allows a range of controllers to turn on/off & dim lighting connected to the driver.



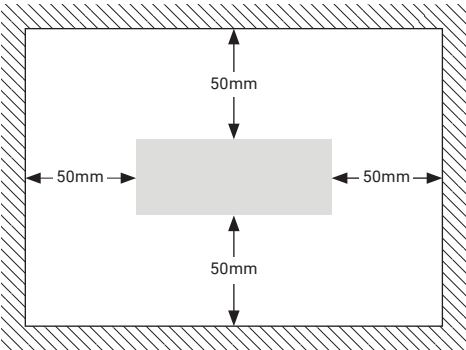
1. Ensure power is off to the driver.
2. Connect the sensor or dimmer via the accessory port.
3. Turn power on and control lighting.

Mounting

Plan View



Top View



Fixing Centres

