

Syndeo

LED Neon Flex

IMPORTANT INFORMATION

- Please read these instructions carefully before installation or operation.
- Retain this manual and cable tag for future reference.
- This product should be installed in accordance with local IEE wiring regulations and building regulations.
- To reduce the risk of strangulation the flexible wiring connected to this luminaire shall be effectively fixed to the wall if the wiring is within arm's reach.
- Ensure mains supply is disconnected before installation.
- Ensure others cannot restore the electrical power supply without your knowledge.
- Do not connect directly to mains electrical supply. Ensure correct polarity before powering.
- This product must be used with a good quality SELV constant voltage LED driver.
- Ensure that the voltage output of the driver matches rated voltage of the LED product.
- Ensure that the power capacity of the LED driver is greater than the total load of all the LED products connected to it.
- To reduce the risk of strangulation the flexible wiring connected to this luminaire shall be effectively fixed to the wall if the wiring is within arm's reach.
- Do not open, modify, or repair the unit. No user-serviceable parts inside.
- Do not install or use the product if it is damaged.

SAFETY PRECAUTIONS

- Please read these instructions carefully before installation or operation.
- This product must be installed by a suitably competent person.
- Ensure mains supply is disconnected before installation.
- Ensure others cannot restore the electrical power supply without your knowledge.
- Do not install or use the product if it is damaged.
- The light source is not replaceable; when the light source reaches its end of life the whole luminaire shall be replaced.

ELECTRICAL

- Do not connect directly to mains electrical supply.
- Switch the power off at the mains supply before installing or maintaining this fitting.
- Ensure others cannot restore the electrical power supply without your knowledge.
- Ensure the product is in good working condition. If there is visible damage do not use.
- This product must be used with a good quality constant voltage LED driver. Ensure that the voltage output of the driver matches rated voltage of the LED flex.
- Connect the LED flex with correct polarity. Refer to the 'wiring' section for help. Terminal block not included.
- Ensure that the power capacity of the LED driver is greater than the total load of all the LED flex connected to it.
- The LED flex and cable should be protected by a fuse or equivalent device installed between the driver and LED flex and as close to the driver as possible.
- Ensure that the current capacity of cable connecting the LED flex to the driver is greater than the maximum drawn by the LED flex and the cut off of any over-current protection (fuse).

MECHANICAL

- Do not use the product if damaged. Do not use with worn or damaged wires or components.
- The product will generate heat during use. It should be installed in a well ventilated location on a smooth surface. Fully uncoil the LED flex. Do not cover or conceal.
- The light source is not replaceable; when the light source reaches its end of life the whole luminaire shall be replaced.
- These products contain a light source. For information on energy efficiency classification, please refer to the product listing.
- Products are dimmable only with specific dimmers or dimming methods.
- The LED flex should be mechanically supported with the recommended accessories. Do not hang under its own weight.
- Do not twist, pull or stretch the LED flex. Only bend following the bend direction and minimum bend.
- Protect the LED flex from mechanical damage. Take care not to dislodge any components during installation. Ensure that wires connecting the LED flex cannot be pulled.

ENVIRONMENTAL

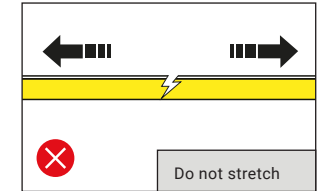
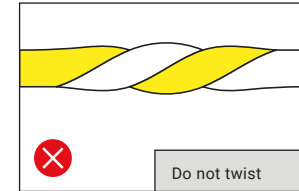
- Ensure the product is installed and operated within the specified ambient temperature (Ta) as outlined in the technical table and product listings.
- For indoor use only.
- Only install in a location free from chemicals, gases and flammable materials. Avoid continuous exposure to UV light.
- Do not install in locations where it is subject to continuous movement.
- The external flexible cable of this luminaire cannot be replaced; if the cable is damaged, the luminaire shall be destroyed.

User Manual

IMPORTANT

- ▶ Please read these instructions before commencing any work.
- ▶ Please retain these instructions & cable tag for future reference.
- ▶ Please refer to product listing for detailed information.
- ▶ Remove all packaging before connecting to power supply.
- ▶ If the cable tag is removed, ensure it is retained and stored safely.

Precautions



SKU	Bending	Min. Bend Diameter	Ta	Size
PPS24-306	Horizontal	30mm	45°C	3x6mm
PPS24-0410	Horizontal	60mm	50°C	4x10mm
PPS24-1010	Vertical	60mm	45°C	10x10mm
PPS24-ASYMM	Vertical	100mm	45°C	14x6mm
PPS24-NEONRANGLE	Vertical	120mm	45°C	10x8.7mm
PPS24-306TRIM	Horizontal	60mm	45°C	5x6mm



MAINTENANCE

- Before cleaning or maintenance, ensure the power supply is disconnected from the mains.
- Clean only with a dry, soft cloth.
- Do not use chemical cleaners or solvents.
- Do not open, modify, or repair the unit. No user-serviceable parts inside.

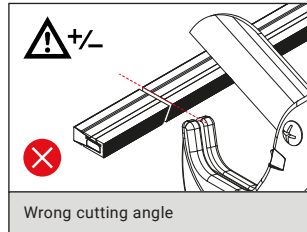
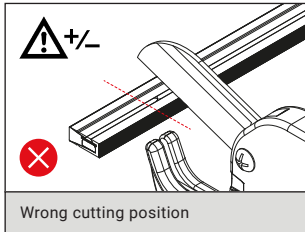
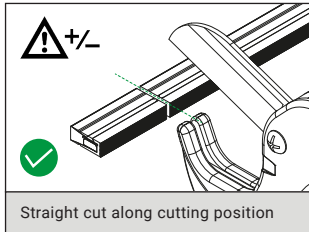
DISPOSAL & RECYCLING

- This product must not be disposed of with household waste.
- Please return to an authorised recycling facility in accordance with local environmental regulations.

PRODUCT WARRANTY

1. A warranty period is provided for products in normal use. For any faults arising during the period that are confirmed to be quality related by inspection by the company, a product of the same specification will be replaced for free.
2. The warranty does not cover any of the following:
 1. Any product damage due to usage not allowed in the instructions.
 2. Any product damage due to disassembling or wrong operation by the user.
 3. Severe appearance damage or deformation of the product.

Cutting



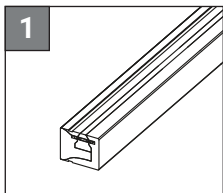
TIP: we recommend using a pipe cutter to cut the LED flex. Use one firm press to cut cleanly through.

Preparing Silicone for Sealing

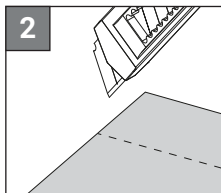
1. **Inspect the Surface:** Ensure the LED Neon Flex is free from major debris or oils. Clean the silicone surface with a lint-free cloth moistened with isopropyl alcohol. Allow it to dry completely. (Avoid wet handling.)
2. **Prepare the Work Area:** Work in a well-lit and ventilated space. Ensure all tools are within reach and the work surface is clean. (Avoid dusty environments.)

Tools & Materials Required

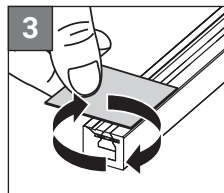
- 300 grit emery paper
- Clean lint-free cloth
- Isopropyl alcohol (70% or higher)
- Safety gloves
- Mask or respirator (optional)



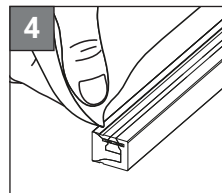
1. Secure the LED flex on a stable, non-slip surface to prevent movement.



2. Cut a manageable piece of emery paper and hold firmly between your thumb and fingers.



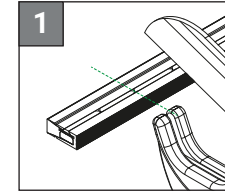
3. Using gentle pressure, move the emery paper in a circular motion along the surface (20mm) until surface is slightly rough.



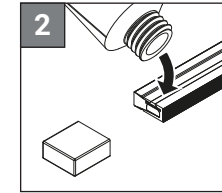
4. Wipe the sanded area with a clean, lint-free cloth moistened with isopropyl alcohol to remove residue. Allow to dry completely.

Wiring & Sealing

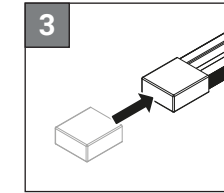
PPS24-306, PPS24-0410, PPS24-1010, PPS24-ASYMM, PPS24-306TRIM



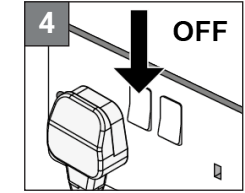
1. Cut the flex to the required length, cutting only on the marked cut points.



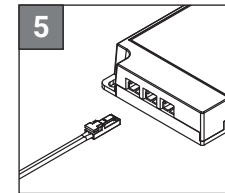
2. Apply glue around the opposite end of the flex.



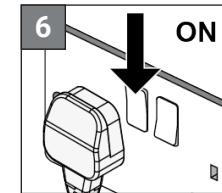
3. Push end cap on over the flex. Avoid moving while the glue dries.



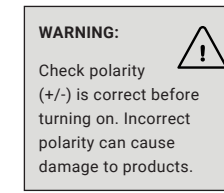
4. Ensure power is off to the driver.



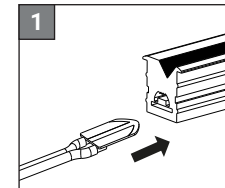
5. Connect the Sydeo connector into the driver.



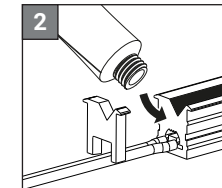
6. Turn on power to the driver.



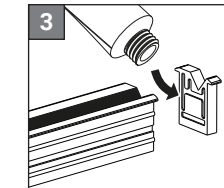
PPS24-NEONRANGLE



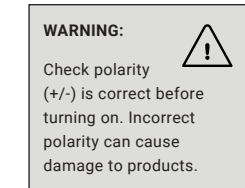
1. Insert the conductive plate into the gap in the neon flex, checking polarity.



2. Apply glue onto the face of the end cap that will be placed against the neon flex.



3. Apply glue onto the opposite end of the neon flex.



NOTE: Allow 2-3 hours before handling and 24 hours for the glue to completely dry. Must not be exposed to moisture until the glue has completely dried. Use the correct glue. Do not use bathroom silicone sealant. Once glue has dried, inspect both ends and confirm that the endcap is fully sealed to the LED flex.

Soldering

1. Make sure you are soldering in a well ventilated area and wear protective eyewear.
2. Check you have made a clean cut before soldering.
3. You may wish to clean the areas being soldered with flux.
4. Before soldering, tin plate the cable ends and solder pads first.
5. Allow the solder point to completely cool down after every solder.

WARNING: For more information on the soldering process and safety precautions please follow the soldering iron manufacturer's instructions.