

Precautions

Installation Notes

- ▶ Install in accordance with the IEE wiring regulations and building regulations.
- ▶ This product must be installed by a suitably competent person.

Electrical

- ▶ Do not connect directly to mains electrical supply.
- ▶ Switch the power off at the mains supply before installing or maintaining this fitting.
- ▶ Ensure others cannot restore the electrical power supply without your knowledge.
- ▶ Ensure the product is in good working condition. If there is visible damage do not use.
- ▶ This product must be used with a good quality constant voltage LED driver. Ensure that the voltage output of the driver matches rated voltage of the LED strip.
- ▶ Connect the strip with correct polarity. Refer to the 'wiring' section for help.
- ▶ Ensure that the power capacity of the LED driver is greater than the total load of all the LED strip connected to it.
- ▶ The LED strip and cable should be protected by a fuse or equivalent device installed between the driver and LED strip and as close to the driver as possible.
- ▶ Ensure that the current capacity of cable connecting the LED strip to the driver is greater than the maximum drawn by the strip and the cut off of any over-current protection (fuse).
- ▶ Protect the strip from static electricity

Mechanical

- ▶ Do not use the product if damaged. Do not use with worn or damaged wires or strip lights.
- ▶ The product will generate heat during use. It should be installed in a well ventilated location on a thermally conductive surface. Fully uncoil the LED strip.
- ▶ The strip should be mechanically supported in addition to its self adhesive backing.
- ▶ Do not fold the LED strip or bend it side to side. The radius of any front to back bends should not be less than 30mm.
- ▶ Protect the strip from mechanical damage. Take care not to dislodge any components during installation. Ensure that wires connecting the strip cannot be pulled

Environmental

- ▶ The temperature of the LED strip should never exceed 60°C when in operation.
- ▶ IP20 strip is not waterproof and can only be installed indoors and with humidity of no more than 55%.
- ▶ IP65 strip should only be exposed to water for short periods of time and humidity of no more than 80%.
- ▶ IP67 strip is suitable for indoor and outdoor installation.
- ▶ Only install in a location free from chemicals, gases and flammable materials.

Product Warranty

1. A warranty period is provided for products in normal use. For any faults arising during the period that are confirmed to be quality related by inspection by the company, a product of the same specification will be replaced for free.
2. The warranty does not cover any of the following:
 - (1) Any product damage due to usage not allowed in the instructions.
 - (2) Any product damage due to disassembling or wrong operation by the user.
 - (3) Severe appearance damage or deformation of the product.

IMPORTANT

- ▶ Please read these instructions before commencing any work.
- ▶ Please retain these instructions for future reference.
- ▶ Please refer to product listing for detailed information.
- ▶ Remove all packaging before connecting to power supply.

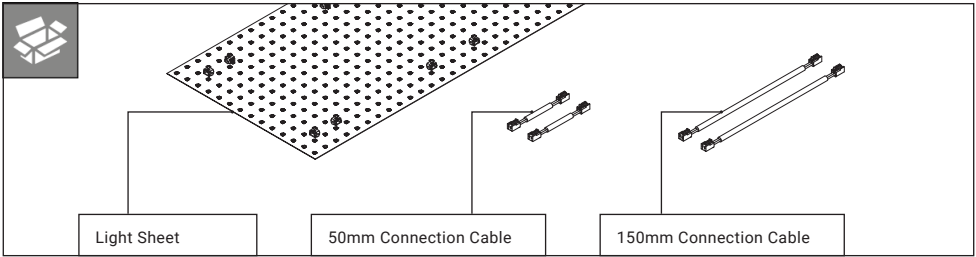
LED Light Sheets

- ▶ Single Colour, CCT & RGB+W



User Manual

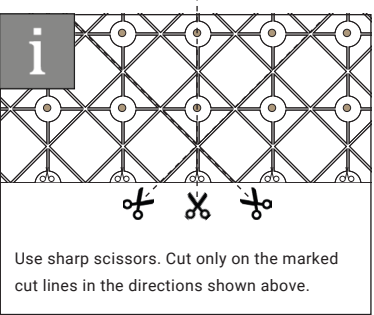
Package Contains



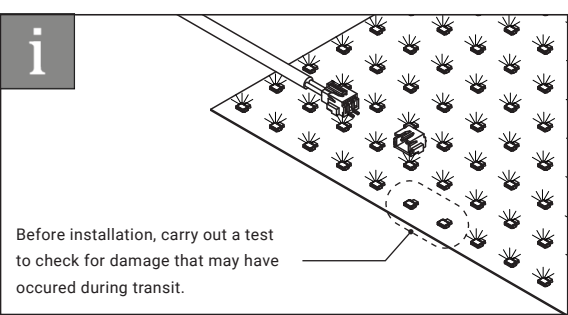
NOTE: Cables will vary depending on the colour temperature of the light sheet you have purchased.



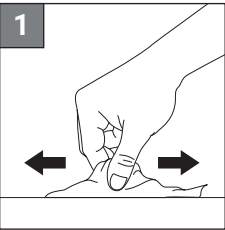
Cutting



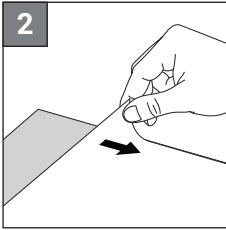
Testing



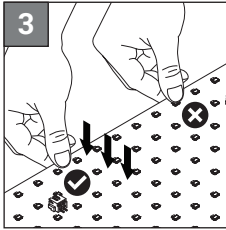
Mounting



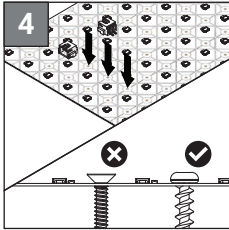
Ensure the surface is clean, smooth, dry and free of greases, oil and dirt particles.



Ensure the protective tape backing is completely removed before install.

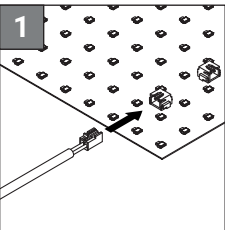


When installing, press down making sure you press inbetween the LED diodes.

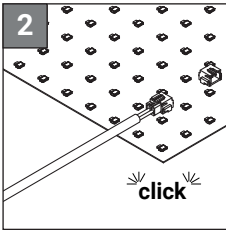


For a more permanent fixing, use screw points provided at regular intervals.

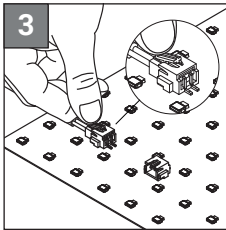
Connecting



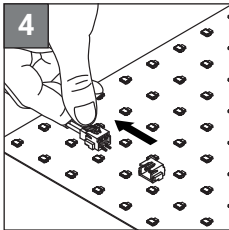
Press the connector into the port on the light sheet.



Listen for a "click" to ensure the connection is good.



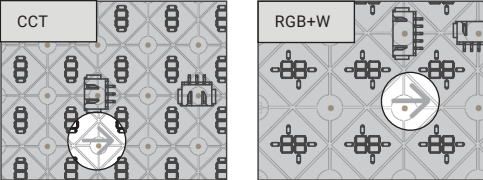
To remove, press down on the connector so the lever is raised.



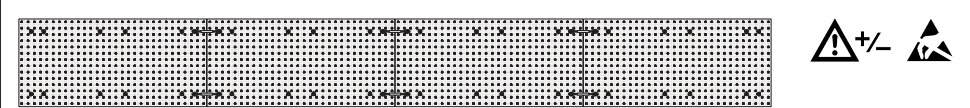
While pressed down, pull back on the connector to remove.

Orientation (CCT & RGBW)

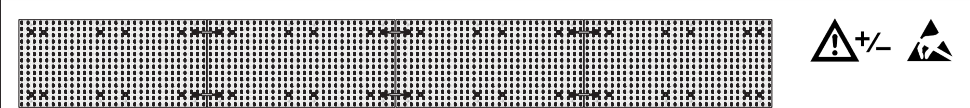
- To maintain consistent LED spacing and prevent colour shifts or hot-spots, ensure that the light sheets are connected in the same direction.
- This direction can be determined by the printed arrows on the light sheets.



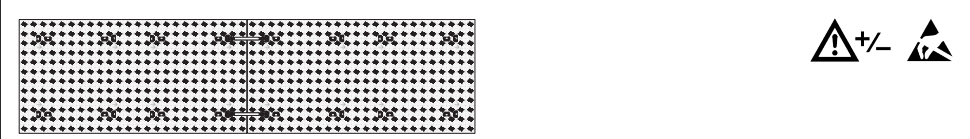
Power



Colour	Power Cable	Max. Run	Core Colours
Single Colour	1500mm	4 Sheets	+ Red, - Black



Colour	Power Cable	Max. Run	Core Colours
CCT	1500mm	4 Sheets	+ Black, - Red (CW), - Yellow (WW)



Colour	Power Cable	Max. Run	Core Colours
RGB+W	1500mm	2 Sheets	+ Black, - Red, - Green, - Blue, - White

Soldering

- Make sure you are soldering in a well ventilated area and wear protective eyewear.
- Check you have made a clean cut before soldering.
- You may wish to clean the areas being soldered with flux.
- Before soldering, tin plate the cable ends and solder pads first.
- Allow the solder point to completely cool down after every solder.

WARNING: for more information on the soldering process and safety precautions please follow the soldering iron manufacturer's instructions.

