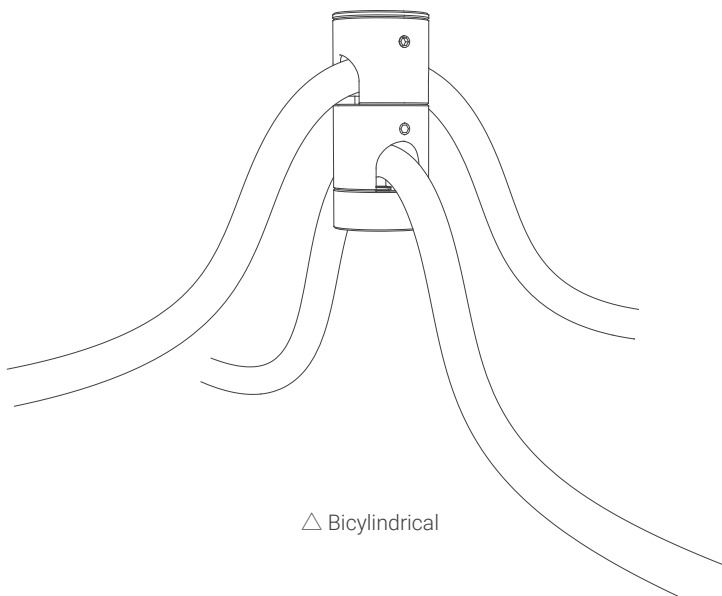


User Manual

tagra®

NEON360 Series Cylindrical Accessories

V1.0



△ Bicylindrical

Please read this manual carefully before installation, and use it correctly.
This manual also contains instructions of accessories.
Please keep this manual properly for future reference.

Prepare materials



NEON360



User Manual



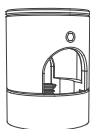
Cylindrical Accessory



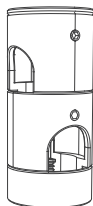
Plastic cap screws

Cylinder optional

Please note: NEON36018 Please use 18mm cylinders.
NEON36025 Please use 25mm cylinders.



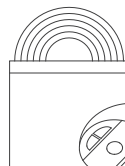
△ Cylindrical



△ Bicylindrical

The above pairings can be chosen according to the actual styling needs.

5000mm



Optional 5m,
or other customized lengths

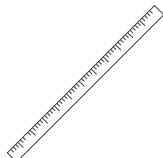
Installation tools



Cross
screwdriver



Pen

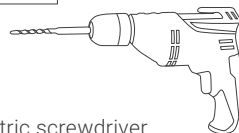


Tape
Measure



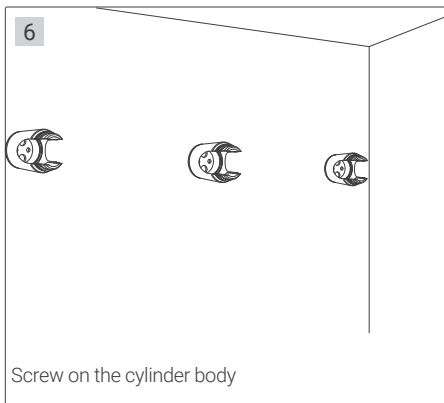
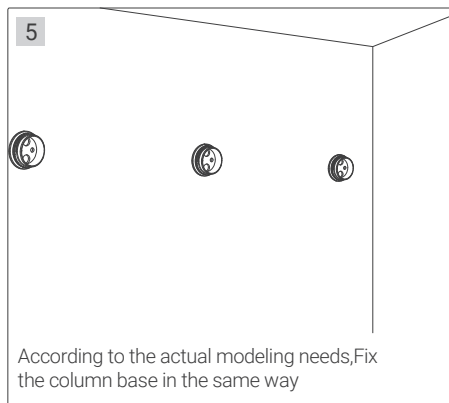
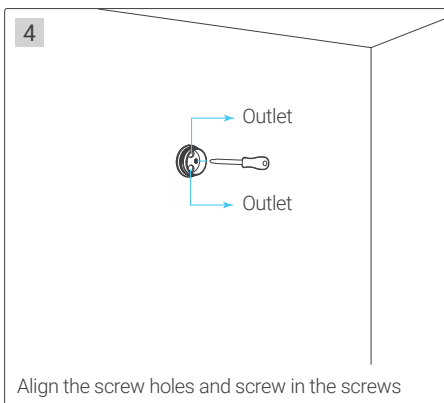
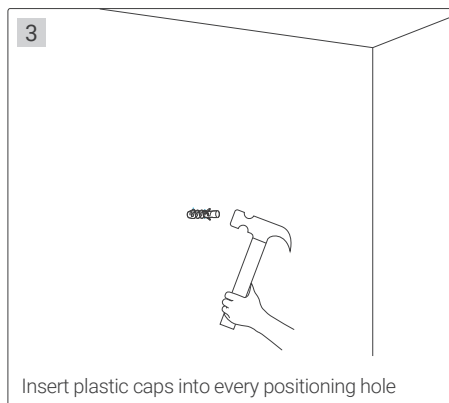
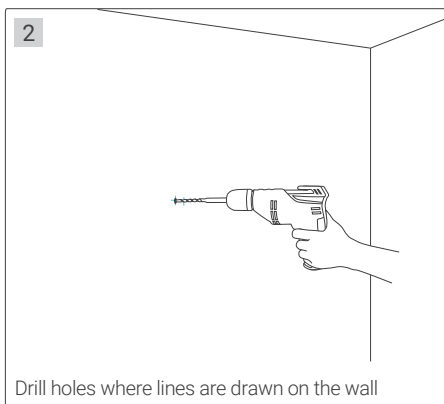
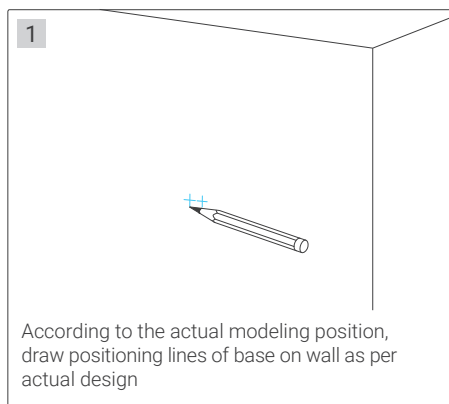
Hammer

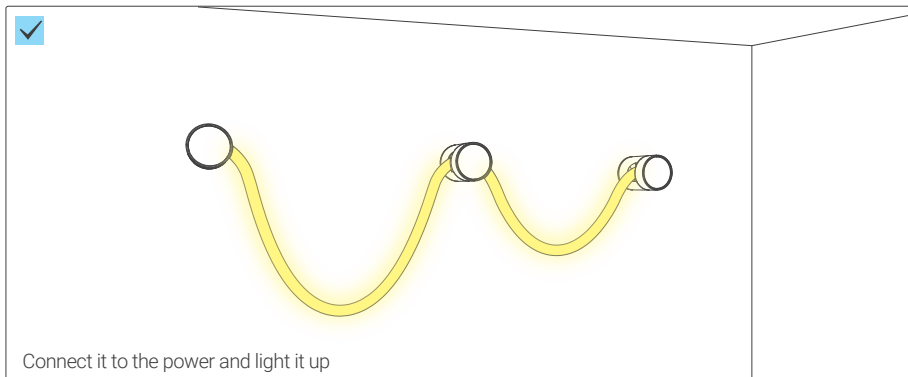
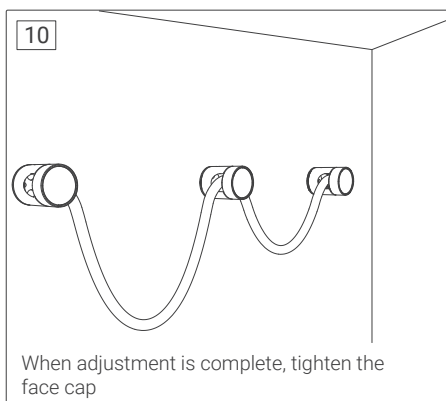
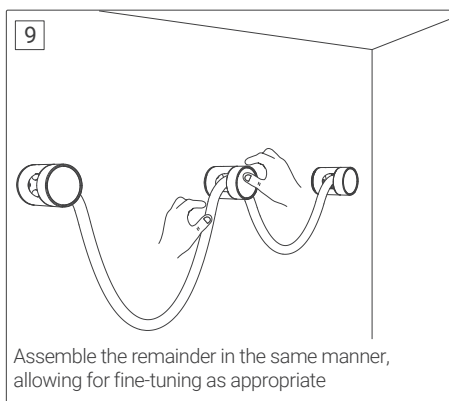
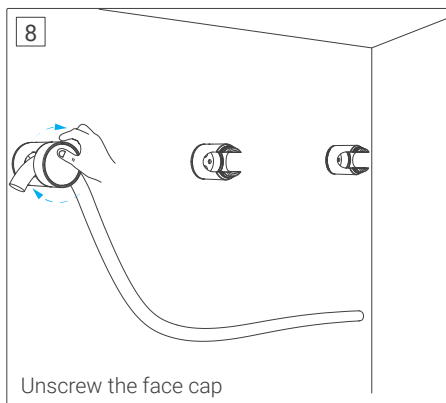
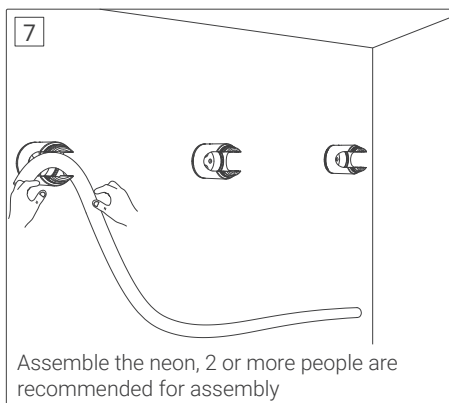
Ø6.0mm



Electric screwdriver
(Ø6.0mm head)

Installation steps (Single Cylinder Mount)

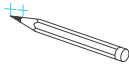






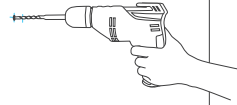
Installation steps (Double Cylinder Mount)

1



According to the actual modeling position, draw positioning lines of base on wall as per actual design

2



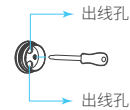
Drill holes where lines are drawn on the wall

3



Insert plastic caps into every positioning hole

4



Align the screw holes and screw in the screws

5



According to the actual modeling needs, Fix the column base in the same way

6



Screw on the cylinder body

