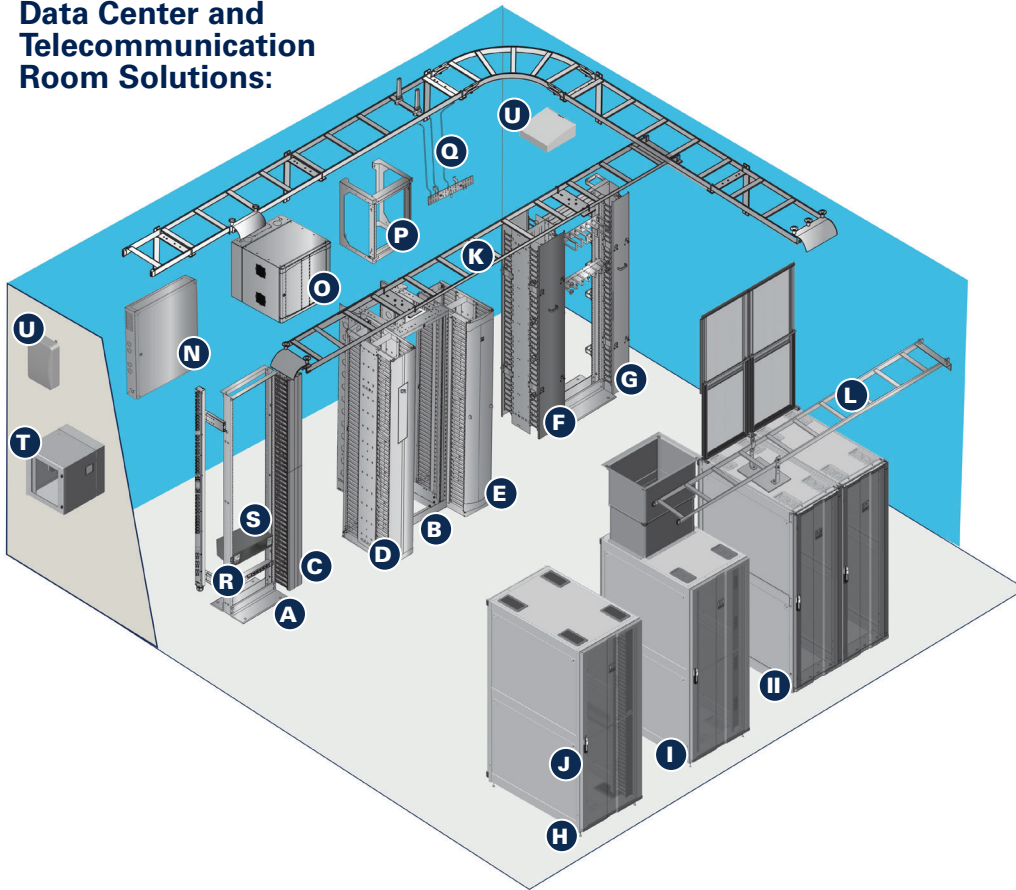


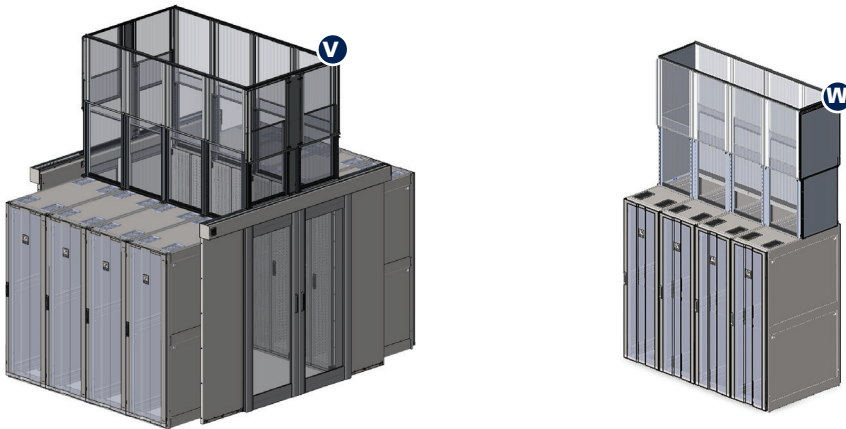


Maximize Performance with CPI Solutions

Data Center and Telecommunication Room Solutions:



Air Containment Solutions:



Rack Systems

- A** Two-Post Standard Rack
- B** Adjustable Rail Server Rack

Cable Management

- C** Velocity® Cable Management
- D** Motive® Cable Management
- E** Evolution® Cable Management
- F** MCS Master Cabling Section
- G** CCS Combination Cabling Section

Cabinets

- H** ZetaFrame® Cabinet System with Electronic Lock Kit

Thermal Management

- I** ZetaFrame® Cabinet with Vertical Exhaust Duct
- J** ZetaFrame® Cabinet with Elevate™ Adjustable Containment Panels
- K** Electronic Lock Kit

Cable Pathway

- L** Adjustable Cable Runway
- M** Universal Cable Runway

Wall-Mount Cabinets/Rack

- N** ThinLine II Wall-Mount Cabinet
- O** CUBE-iT® Wall-Mount Cabinet
- P** Standard Swing Gate Wall Rack

Bonding and Grounding

- Q** Primary and Secondary Busbars

Power Management

- R** eConnect® Intelligent PDUs
- S** Uninterruptible Power Supply (UPS)

Industrial NEMA & Wireless Enclosures

- T** Industrial NEMA Enclosures
- U** Oberon® Wireless Enclosures

Air Containment Solutions

- V** Elevate™ Adjustable Containment Solution for Hot Aisle Containment
- W** Elevate™ Adjustable Containment Solution for Row Level Vertical Exhaust Duct (VED)

1 Select a Rack or Cabinet System

Q: What will you be installing in the rack?

Rack Systems

Open, floor-mount racks for patch panels, fiber enclosures and small network switches

55053-703	Standard Rack, 45 U, 3"D (80 mm), 19"EIA, 84"H x 20.3"W x 15"D (2100 mm x 515 mm x 381 mm), 1000 lb (453.6 kg) capacity, UL Listed
46353-703	Universal Rack, 45U, 19"EIA, 84"H x 20.3"W x 15"D (2100 mm x 515 mm x 381 mm), 1500 lb (680.4 kg) capacity
34537-E02	Snap-In Filler Panel, 1U, 19"EIA, for Square Punched Mounting Rails, Pack of 50, Glacier White
34381-C02	Snap-in Filler Panel, 1U, 19"EIA, for Tapped Equipment Mounting Rails, Pack of 50, Black
76544-001	Clik-Nut® Hardware Kit, #12-24 Cage Nuts and Screws, 25, Zinc
76543-001	Clik-Nut Hardware Kit, M6 Cage Nuts and Screws, 25 Count, Zinc
40605-005	Combination Pan Head, Pilot Point Mounting Screws, #12-24, Package of 50

Open, floor-mount racks for large network switches (QuadraRacks) or servers (ServerRacks).

15251-703	Adjustable Rail QuadraRack, 45U, 19"EIA, 84"H x 23.6"W x 23.62"D to 29.52"D (2100 mm x 600 mm x 600 mm - 750 mm), 2200 lb (1000 kg) capacity, UL Listed
15254-703	Adjustable Rail ServerRack, 45U, 19"EIA, 84"H x 23.6"W x 35.43"D to 41.33"D (2100 mm x 600 mm x 900 mm - 1050 mm), 2200 lb (1000 kg) capacity, UL Listed
15217-703	Adjustable QuadraRack, 45U, 19"EIA, 84"H x 20.3"W x 29.53"D to 35.43"D (2100 mm x 515 mm x 750 mm - 900 mm), 2000 lb (907.2 kg) capacity, UL Listed
15213-703	Adjustable ServerRack, 45U, 19"EIA, 84"H x 20.3"W x 29.53"D to 35.43"D (2100 mm x 515 mm x 750 mm - 900 mm), 2000 lb (907.2 kg) capacity, UL Listed
50120-703	QuadraRack 4-Post Frame, 45U, 19"EIA, 84"H x 20.3"W x 29"D (2100 mm x 515 mm x 740 mm), 2000 lb (907.2 kg) capacity
15053-703	QuadraRack Server Frame, 45U, 19"EIA, 84"H (2100 mm) x 20.3"W (515 mm) x 29"D (740 mm), 1000 lb (453.6 kg) capacity
40750-719	Standard Single-Sided Steel Shelf, 3U, 19"EIA, 15"D (381 mm), 35 lb (15.9 kg) capacity
10629-119	Raised Floor Rack Support, for 19"EIA Rack, Height of Floor 10" (250 mm) to 16" (410 mm)
40604-003	Rack Concrete Floor Installation Kit, Includes (4) 1/2" threaded components, Zinc Finish

Wall-Mount Rack Systems

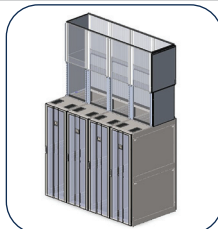
Open, wall-mount racks for patch panels, fiber enclosures and small network switches (UL Listed)

11790-718	Standard Swing Gate Wall Rack, 12U, 19"EIA, 29.1"H (739 mm) x 21.7"W (551 mm) x 18.2"D (462 mm), 100 lb (45.4 kg) capacity
11790-725	Standard Swing Gate Wall Rack, 12U, 19"EIA, 29.1"H (739 mm) x 21.7"W (551 mm) x 25.2"D (640 mm), 100 lb (45.4 kg) capacity
11791-718	Standard Swing Gate Wall Rack, 20U, 19"EIA, 43.1"H (1095 mm) x 21.7"W (551 mm) x 18.2"D (462 mm), 100 lb (45.4 kg) capacity
11791-725	Standard Swing Gate Wall Rack, 20U, 19"EIA, 43.1"H (1095 mm) x 21.7"W (551 mm) x 25.2"D (640 mm), 100 lb (45.4 kg) capacity

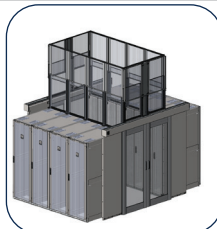
Note: Color: -7XX=Black; -EXX=Glacier White. Other finishes noted. Bold indicates most popular part numbers.



ZetaFrame® Cabinet in Glacier White



Elevate™ Adjustable Containment Solution for Row Level Vertical Exhaust Duct (VED)



Elevate™ Adjustable Containment Solution

Q: What will you be installing in the cabinet system?

Server Cabinets and Network Cabinets

ZetaFrame® Cabinet System, Standard Option

ZB15-A120A-E1	ZetaFrame Cabinet, 84.6"H x 23.6"W x 47.2"D (2149 mm x 600 mm x 1200 mm), 45U, 5000 lb (2268 kg) capacity, Perf Front Door, Double Perf Rear Door, Grommet Top Panel, 2 Side Panels, No Bottom Panel, Air Dam, Rail Grommets, Standard Pallet, Glacier White, UL Listed
ZB45-A120A-E1	ZetaFrame Cabinet, 84.6"H x 31.5"W x 47.2"D (2149 mm x 800 mm x 1200 mm), 45U, 5000 lb (2268 kg) capacity, Perf Front Door, Double Perf Rear Door, Grommet Top Panel, 2 Side Panels, No Bottom Panel, Air Dam, Rail Grommets, Standard Pallet, Glacier White, UL Listed

ZetaFrame Cabinet with Vertical Exhaust Duct Option

ZB15-DB21A-E1	ZetaFrame Cabinet, 84.6"H x 23.6"W x 47.2"D (2149 mm x 600 mm x 1200 mm), 45U, 5000 lb (2268 kg) capacity, Perf Front Door, Solid Rear Door, Vertical Exhaust Duct 20"H-34"H (508 mm - 863 mm), 2 Side Panels, Grommet Bottom Panel, Air Dam, Standard Pallet, Glacier White, UL Listed
ZB45-DB21B-E1	ZetaFrame Cabinet, 84.6"H x 31.5"W x 47.2"D (2149 mm x 800 mm x 1200 mm), 45U, 5000 lb (2268 kg) capacity, Perf Front Door, Solid Rear Door, Vertical Exhaust Duct 20"H-34"H (508 mm - 863 mm), 2 Side Panels, Grommet Bottom Panel, Air Dam, Rail Brushes, Standard Pallet, Glacier White, UL Listed
ZB15-A120A-E2	ZetaFrame Cabinet, 84.6"H x 23.6"W x 47.2"D (2149 mm x 600 mm x 1200 mm), 45U, 4000 lb (2268 kg) capacity, Perf Front Door, Double Perf Rear Door, Grommet Top Panel, 2 Side Panels, No Bottom Panel, Air Dam, Shock Pallet, Black, UL Listed
ZB45-A120A-E2	ZetaFrame Cabinet, 84.6"H x 31.5"W x 47.2"D (2149 mm x 800 mm x 1200 mm), 45U, 4000 lb (2268 kg) capacity, Perf Front Door, Double Perf Rear Door, Grommet Top Panel, 2 Side Panels, No Bottom Panel, Air Dam, Rail Grommets, Shock Pallet, Glacier White, UL Listed

Air Containment Options / Accessories

32770-EXX	Aisle Containment Door Option (Double Door), Glacier White
14500-EXX	Elevate™ Adjustable Containment Solution, Glacier White
14625-EXX	Elevate™ Adjustable Containment Solution for Row Level Vertical Exhaust Duct (VED), Glacier White
14666-001	eConnect® Electronic Locking Kit
60508-E02	Cable Pathway Elevation Kit for ZetaFrame Cabinet, 1 Tier

Wall-Mount Cabinet Systems

Secure, wall-mount cabinets for patch panels, fiber enclosures and small network switches

11840-724	CUBE-iT® Wall-Mount Cabinet, 12U, 19"EIA, 24"H x 24"W x 24"D (610 mm x 610 mm x 610 mm), 300 lb (136 kg) capacity, Solid Metal Door, UL Listed
11900-724	CUBE-iT Wall-Mount Cabinet, 12U, 19"EIA, 24"H x 24"W x 24"D (610 mm x 610 mm x 610 mm), 300 lb (136 kg) capacity, Tempered Glass Door, UL Listed
11900-736	CUBE-iT Wall-Mount Cabinet, 19U, 19"EIA, 36"H x 24"W x 24"D (910 mm x 610 mm x 610 mm), 300 lb (136 kg) capacity, Tempered Glass Door, UL Listed
12419-736	CUBE-iT Wall-Mount Cabinet, 19U, 19"EIA, 36"H x 24"W x 30"D (910 mm x 610 mm x 760 mm), 300 lb (136 kg) capacity, Tempered Glass Door, UL Listed
13050-713	ThinLine II Wall-Mount Cabinet, 6U, 19"EIA, 26 H x 26"W x 12"D (660 mm x 660 mm x 300 mm), 100 lb (45.4 kg) capacity, Solid Metal Door
12803-701	LED Light Kit for CUBE-iT Wall-Mount Cabinet, Power Switch, 4W, 120 VAC, NEMA 1-15P Power Cord, White
40975-001	Low-Decibel Dual-Fan and Filter Kit for CUBE-iT Wall-Mount Cabinet, 120 CFM, 31 dBA, 115 VAC, 50/60 Hz, 6'L (1.8 m) NEMA 5-15P Power Cord, Includes 2 Fans and 2 Filters
40974-719	Rack-Mount Shelf, 1U, 19"EIA, 10"D (250 mm), 20 lb capacity
13051-001	Intelligent Fan Kit for 4U/6U ThinLine II Wall-Mount Cabinet, 120 CFM, 51 dBA, 115 VAC, 60Hz, NEMA 5-15P Power Cord

2 Select Cable Management

Q: How many cable (drops) will you have per rack?
Are you looking for horizontal and vertical management?
Are you expecting regular changes (MACs) to equipment?

Cable Management for Two- and Four-Post Racks

For high-density copper and fiber optic applications

32610-703	Motive® Single-Sided Vertical Cable Manager, 84"H x 6"W x 15.5"D (2133 mm x 150mm x 394 mm)
32620-703	Motive Double-Sided Vertical Cable Manager, 84"H x 6"W x 23.6"D (2133 mm x 150 mm x 600 mm)
32612-703	Motive Single-Sided Vertical Cable Manager, 84"H x 10"W x 15.5"D (2133 mm x 250mm x 394 mm)
32622-703	Motive Double-Sided Vertical Cable Manager, 84"H x 10"W x 23.6"D (2133 mm x 250 mm x 600 mm)
32623-703	Motive Double-Sided Vertical Cable Manager, 84"H x 12"W x 23.6"D (2133 mm x 300 mm x 600 mm)
32613-703	Motive Single-Sided Vertical Cable Manager, 84"H x 12"W x 15.5"D (2133 mm x 300 mm x 394 mm)
35431-702	Motive Horizontal Cable Manager with Cable Pass-Through Ports, 2U, 19"EIA, 8.2"D (208 mm)
32650-701	Accessory Rod Assembly for Motive Single-Sided Vertical Cable Manager, Pair
32650-702	Accessory Rod Assembly for Motive Double-Sided Vertical Cable Manager, Pair
32657-001	Cable Bundle Swivel Kit for Motive Vertical Cable Manager, 12 Pk
32661-001	Rotating Management Finger Kit for Motive Vertical Cable Manager, Pack of 4
32651-001	Half Spool Kit for Motive Vertical Cable Manager, Pack of 4
32697-001	Tool-less Bend Radius Kit for Fiber Patch Cords, 1.1" H x 1.5" W x 5.4" D (28 mm x 38 mm x 137 mm), Pack of 10
32601-700	Dual PDU Bracket Kit for Motive Vertical Cable Manager
32602-703	Side Panel Kit for Motive Vertical Cable Manager, 84"H (2133 mm), (2)

For high-density copper applications and moves, adds and changes (MACs)

35511-703	Evolution® Single-Sided Vertical Cable Manager, 84"H x 6"W x 13.2"D (2133 mm x 150 mm x 335 mm)
35521-703	Evolution Double-Sided Vertical Cable Manager, 84"H x 6"W x 24.5"D (2133 mm x 150 mm x 662 mm)
35513-703	Evolution Single-Sided Vertical Cable Manager, 84"H x 10" W x 13.2" D (2133 mm x 250 mm x 335 mm)
35523-703	Evolution Double-Sided Vertical Cable Manager, 84"H x 10" W x 24.5"D (2133 mm x 250 mm x 662 mm)
35514-703	Evolution Single-Sided Vertical Cable Manager, 84"H x 12"W x 13.2" D (2133 mm x 300mm x 335 mm)
35524-703	Evolution Double-Sided Vertical Cable Manager, 84"H x 12"W x 24.5"D (2133 mm x 300mm x 662 mm)
35441-701	Evolution Horizontal Cable Manager, Single-Sided, 1U, 19"EIA, 8.2" (208 mm), Solid
35441-702	Evolution Horizontal Cable Manager, Single-Sided, 2U, 19"EIA, 8.2" (208 mm), Cable Pass-through ports
35441-703	Evolution Horizontal Cable Manager, Single-Sided, 3U, 19"EIA, 8.2" (208 mm), Cable Pass-through ports

For medium-density cabling applications and occasional MACs

30092-703	MCS Master Cabling Section, Single-Sided, Vertical, 84"H x 6"W x 8"D (2100 mm x 150 mm x 205 mm)
30095-703	MCS Master Cabling Section, Double-Sided, Vertical, 84"H x 6"W x 16"D (2100 mm x 150 mm x 410 mm)
40092-703	MCS - EFX Master Cabling Section Extended Fingers, SS, Vertical, 84"H x 6"W x 10.6"D (2100 mm x 150 mm x 269 mm)
40095-703	MCS - EFX Master Cabling Section Extended Fingers, DS, Vertical, 84"H x 6"W x 21.2"D (2100 mm x 150 mm x 539 mm)
30130-719	Universal Horizontal Cable Manager, 2U, 19"EIA, 5"D (126 mm)

Q: How many cable (drops) will you have per rack?
Are you looking for horizontal and vertical management?
Are you expecting regular changes (MACs) to equipment?

Cable Management for Two- and Four-Post Racks

For medium-density cabling applications and occasional MACs

30162-703	CCS Combination Cabling Section, for 3"D (80 mm) Racks, Double-Sided, Vertical, 84"H x 6"W x 12.2"D (2100 mm x 150 mm x 311 mm)
40098-703	CCS - EFX Combination Cabling Section Extended Fingers, Double-Sided, Vertical, 84"H x 6"W x 14.9"D (2100 mm x 150 mm x 379 mm)

For low-density cabling applications and very few MACs

13901-703	Velocity Single-Sided Vertical Cable Managers, for 84"H (2100 mm) 45U Racks, 80.5"H x 3.6"W x 9.7"D (2045 mm x 91 mm x 246 mm)
13912-703	Velocity Double-Sided Vertical Cable Managers, for 84"H (2100 mm) 45U Racks, 80.5"H x 6"W x 16.6"D (2045 mm x 152 mm x 422 mm)
13930-701	Velocity Horizontal Cable Manager, Single-Sided, 1U, 19"EIA, 5.9"D (150 mm)

Cable Management for Cabinets

40971-724	Vertical Lashing Bracket for CUBE-iT Wall-Mount Cabinet, 24"H x 4"W (610 mm x 100 mm)
40971-736	Vertical Lashing Bracket for CUBE-iT Wall-Mount Cabinet, 36"H x 4"W (910 mm x 100 mm)
11837-701	Horizontal Wire Management Bar for CUBE-iT Wall-Mount Cabinet, 1.5"W x 19.3"W x 3.7"D (38 mm x 490 mm x 94 mm), Includes mounting hardware and (12) cable ties
38647-E36	Vertical Cable Manager For ZetaFrame Cabinet, For 45U x 31.5"W (800 mm) Cabinet, Long Finger, With Cover
38646-E36	Vertical Cable Manager For ZetaFrame Cabinet, For 45U x 31.5"W (800 mm) Cabinet, Short Finger, With Cover
38635-E03	Cable Lashing Panel For ZetaFrame Cabinet, For 45U Cabinet, 4.5"W (115 mm), Includes 12 Cable Bundle Swivels
38636-E03	Cable Lashing Panel For ZetaFrame Cabinet, For 45U Cabinet, 7.0"W (178 mm), Includes 12 Cable Bundle Swivels

Note: Color: -7XX=Black; -EXX=Glacier White. Other finishes noted. Bold indicates most popular part numbers.



Motive Cable Manager installation



Evolution Cable Manager installation



Cable Managers installed in ZetaFrame Cabinet

3 Select Power Solutions

Q: What functionality are you interested in?
What's the plug type?
How many outlets do you need and what type?

eConnect® Power Distribution Units (PDUs)

Basic	Metered	Monitored	
E0-1094W-X	E1-2094W-X	EA-3094W-X	eConnect PDU, C20 inlet to NEMA L6-20 Input; 20A; Locking (12) C13/C15+(12) QuadLock Outlets; 3.3kW; 208 Volt Single Phase Input
E0-1095W-X	E1-2095W-X	EA-3095W-X	eConnect PDU, NEMA L6-30 Input; 30A; Locking (12) C13/C15+(12) QuadLock Outlets; 5kW; 208 Volt Single Phase Input
E0-10A0W-X	E1-20A0W-X	EA-30A0W-X	eConnect PDU, NEMA L21-30 Input; 30A; Locking (24) C13/C15+(12) QuadLock+(6) 5-20 Outlets; 8.6kW; 120/208 Volt Three Phase Input
E0-1007W-X	E1-2007W-X	EA-3007W-X	eConnect PDU, CS8365C Input; 50A; Locking (30) C13/C15+(12) QuadLock Outlets; 14.4kW; 208 Volt Three Phase Input
E0-1008W-X	E1-2008W-X	EA-3008W-X	eConnect PDU, IEC 60309 60A 3P+E Input; 60A; Locking (30) C13/C15+(12) QuadLock Outlets; 17.2kW; 208 Volt Three Phase Input
E0-1009W-X	E1-2009W-X	EA-3009W-X	eConnect PDU, IEC 60309 32A 3P+N+E Input; Locking (30) C13/C15+(12) QuadLock Outlets; 18.4(UL)/23(CE) kW
E0-1010W-X	E1-2010W-X	EA-3010W-X	eConnect PDU, IEC 60309 60/63A 3P+N+E Input; 60A; Locking (30) C13/C15+(12) QuadLock Outlets; 34.5kW; 220-240/380-415 Three Phase Input
Monitored Pro	Switched Pro		
EA-40B8W-X	EA-60B8W-X		eConnect PDU, C20 inlet to NEMA L6-20 Input; Locking (12) C13/C15+(12) QuadLock Outlets; 3.3kW; 208 Volt Single Phase Input
EA-40B9W-X	EA-60B9W-X		eConnect PDU, NEMA L6-30 Input; 20A; Locking (12) C13/C15+(12) QuadLock Outlets; 5kW; 208 Volt Single Phase Input
EA-40D4W-X	EA-60D4W-X		eConnect PDU, NEMA L21-30 Input; 30A; Locking (18) C13/C15+(18) QuadLock Outlets; 8.6kW; 120/208 Volt Three Phase Input
EA-41D6W-X	EA-61D6W-X		eConnect PDU, CS8365C Input; 50A; Locking (18) C13/C15+(18) QuadLock Outlets; 14.4kW; 208 Volt Three Phase Input
EA-41D7W-X	EA-61D7W-X		eConnect PDU, IEC 60309 60A 3P+E Input; 60A; Locking (18) C13/C15+(18) QuadLock Outlets; 17.2kW; 208 Volt Three Phase Input
EA-40E2W-X	EA-60E2W-X		eConnect PDU, IEC 60309 32A 3P+N+E Input; 32A; Locking (18) C13/C15+(18) QuadLock Outlets; 18.4(UL)/23(CE) kW; 220-240/380-415 Three Phase Input
EA-40E3W-X	EA-60E3W-X		eConnect PDU, IEC 60309 60/63A 3P+N+E Input; 60A; Locking (18) C13/C15+(18) QuadLock Outlets; 34.5kW; 220-240/380-415 Three Phase Input

X= Color; C=Black, E=Glacier White and CE=Redundancy Pack, which includes one Black PDU and one Glacier White PDU for easy identification of the primary and secondary unit; Bold indicates most popular part numbers. Horizontal PDUs also available at chatsworth.com.

Power Strips

Several plug and outlets styles available

12816-701	Basic Horizontal Power Strip, 1.4 kW, NEMA 5-15P, 110-125V Single-Phase Input, 15A, (8) NEMA 5-20R Outlets, 1U
12816-705	Basic Horizontal Power Strip, 1.9 kW, NEMA 5-20P, 110-125V Single-Phase Input, 20A, (8) NEMA 5-20R Outlets, 1U
12816-706	Basic Horizontal Power Strip, 1.9 kW, NEMA L5-20P, 110-125V Single-Phase Input, 20A, (8) NEMA 5-20R Outlets, 1U
12816-703	Basic Horizontal Power Strip, 1.4 kW, NEMA 5-15P, 110-125V Single-Phase Input, Surge-Protected, 15A, (6) NEMA 5-20R Outlets, 1U
12816-707	Basic Horizontal Power Strip, 1.9 kW, NEMA 5-20P, 110-125V Single-Phase Input, Surge-Protected, 205A, (6) NEMA 5-20R Outlets, 1U
12816-708	Basic Horizontal Power Strip, 1.9 kW, NEMA L5-20P, 110-125V Single-Phase Input, Surge-Protected, 205A, (6) NEMA 5-20R Outlets, 1U

Accessories

35700-701	Mounting Brackets for a Two-Post or Four-Post Rack System
38638-703	Full Height Dual PDU Bracket for ZetaFrame Cabinet; 45U

Go to selectapdu.com to configure the intelligent PDU for your application

Q: What UPS battery type is needed?

Choose UPS topology - Line Interactive or Double conversion
Choose Plug type

Additional options available

LS350A/LS600A	Lithium Ion Standby 350VA - 600VA, For wall-mount enclosures, kiosks
LD1500A/LD2000A/LD3000A	Lithium Ion Online 1500VA - 3000VA, For open rack and cabinets; Rack/Tower convertible
VD1500A/VD2000A/VD3000A	Lead Acid Online 1000VA - 3000VA, For open rack and cabinets; Rack/Tower convertible
VD5000B/VD6000B/VD10kB	Lead Acid Online 5000VA - 10000VA, For open rack and cabinets; Rack/Tower convertible
VD5K3P/VD8K3P	Lead Acid Online UPS, 5kVA-8kVA, 3-Phase, For open rack and cabinets; Rack/Tower convertible
VL800A/VL1100A/VL1500A/VL2000A/VL3000A	Lead-Acid Line Interactive 800VA - 5000VA, For open rack and cabinets; Rack/Tower convertible



Lead Acid Online UPS, 5kVA-8kVA, 3-Phase Unit



eConnect HP PDUs with QuadLock Outlets

4 Select Bonding & Grounding

Q: Per the TIA-607 Generic Telecommunications Bonding and Grounding (Earthing) for Customer Premises standard:
Do you have a bonding busbar for the equipment room?
Do you have rack bonding busbars for your racks?
Do you have bonding components to connect racks, pathway and busbars?

Primary and Secondary Bonding Busbars

13622-010	Secondary Bonding Busbar (SBB), Wall-Mount, (4) 5/8" Centers, (3) 1" Centers, 2"H x 10"W x 3.2"D (50 mm x 250 mm x 80 mm)
13622-012	Secondary Bonding Busbar (SBB), Wall-Mount, (6) 5/8" Centers, (3) 1" Centers, 2"H x 12"W x 3.2"D (50 mm x 300 mm x 80 mm)
40153-012	ICT Primary Bonding Busbar (PBB), Wall-Mount, (15) 5/8" Centers, (3) 1" Centers, 4"H x 12"W x 3.2"D (100 mm x 300 mm x 80 mm)
40153-020	ICT Primary Bonding Busbar (PBB), Wall-Mount, (27) 5/8" Centers, (3) 1" Centers, 4"H x 20"W x 3.2"D (100 mm x 500 mm x 80 mm)

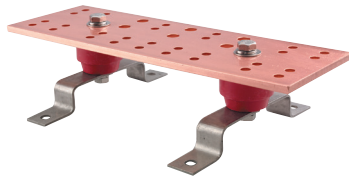
Rack Bonding Busbars

10610-019	Horizontal Rack Bonding Busbar (RBB), for 19"EIA Rack, (8) Tapped #6 Stud Ring Terminal Holes on 1" Centers, (2) 3/4" Centers, 3/4"H x 19"W x 3/16"D (19 mm x 483 mm x 5 mm), Includes Installation Hardware; (8) Rings
40161-036	Vertical Rack Bonding Busbar (RBB) Kit, (8) 5/8" Centers, (1) 1" Centers, 36"H x 5/8"W x 1/4"D (910 mm x 15 mm x 6 mm), Includes (1) #2 Lug
40161-072	Vertical Rack Bonding Busbar (RBB) Kit, (13) 5/8" Centers, (2) 1" Centers, 72"H x 5/8"W x 1/4"D (1830 mm x 15 mm x 6 mm), Includes (1) #2 Lug

Bonding Components

40162-901	Compression Lug, Two-Hole, #6 Cable, .625" (15.9 mm) Hole Spacing, 0.250" (6.4 mm) Hole Size, Blue, Each
40159-008	Rack Bonding Jumper Kit, for attaching Rack Bonding Busbar to Secondary Bonding Busbar, #6 AWG Stranded Conductor with (1) 5/8" Lug, 9"L (2.7 m)
40159-010	Equipment Bonding Jumper Kit, for attaching Equipment to Vertical Rack Bonding Busbar, #6 AWG Stranded Conductor with (2) 5/8" Lugs, 2'L (0.6 m)
40164-001	Cable Runway Bonding Strap Kit, #6 AWG Bonding Strap with hardware
40162-904	Compression Lug, Two-Hole, #2 Cable, .625" (15.9 mm) Hole Spacing, 0.250" (6.4 mm) Hole Size, Brown, Each
40159-001	Ground Wire, for attaching Rack and Bonding Busbars, #6 AWG Stranded MTW Conductor, 100'L (30 m), Spool
40163-001	C-Type Compression Tap; #4 Stranded; #6 Solid Run; #6 Stranded; #6 Solid Tap; Each
10605-019	Rack Base Insulator Kit, for 19"EIA Two-Post Rack, Each
40168-801	Copper-to-Copper Antioxidant Joint Compound; 8 oz (230 g); Each

Note: Bold indicates most popular part numbers.



Primary Bonding Busbar

Cable Runway Bonding Strap Kit installed



5 Select Cable Pathway

Q: How many cables are you supporting?

Cable Runway Systems

UL Listed, Supports up to 132 lbs supported (60 kg) when every 5' (1.5 m)

10250-712	Universal Cable Runway, 1.5"H x 12"W x 119.5"L (38 mm x 300 mm x 3035 mm)
10250-718	Universal Cable Runway, 1.5"H x 18"W x 119.5"L (38 mm x 460 mm x 3035 mm)
14300-712	Adjustable Cable Runway, 1.5"H x 12"W x 119.5"L (38 mm x 300 mm x 3035 mm)
14300-718	Adjustable Cable Runway, 1.5"H x 18"W x 119.5"L (38 mm x 460 mm x 3035 mm)
11301-701	Butt-Splice Kit, Cable Runway End-to-End Splice
11302-701	Junction-Splice Kit, Cable Runway L-shaped or T-shaped Splice
10506-716	Cable Runway Elevation Kit For Cabinets, 4"H - 6"H (100 mm -150 mm)
60508-706	Pathway Elevation Kit, ZetaFrame Cabinet, 4"H - 6"H (100 mm - 150 mm)
11746-712	Triangular Support Bracket, for 12"W (300 mm) Cable Runway
11746-718	Triangular Support Bracket, for 18"W (460 mm) Cable Runway
11421-712	Wall Angle Support Kit, for 12"W (300 mm) Cable Runway
11421-718	Wall Angle Support Kit, for 18"W (460 mm) Cable Runway
12362-712	Cable Runway Center Support Kit, for 12"W (300 mm) Cable Runway
10642-001	Protective End Caps, for Cable Runway
14308-001	Tool-less Pathway Dividers, 6"H (152 mm), Pack of 10
14305-700	Tool-less Stringer Radius Drop, Large, 10.5"W (268 mm)
14305-701	Tool-less Stringer Radius Drop, Small, 5.5"W (140 mm)
14304-712	Tool-less Cross Member Radius Drop, 12"W (300 mm)
14304-718	Tool-less Cross Member Radius Drop, 18" W (460 mm)
10822-712	Cable Runway E-Bend, For 12"W Cable Runway
14307-025	Adjustable Cable Runway Grounding Strap Kit, #6 AWG, 10.25 (260 mm) Center-To-Center Hole Spacing, Pack of 25
40164-025	Cable Runway Ground Strap Kit, #6 AWG Ground Strap with hardware, Package of 25 Kits
11440-002	Threaded Drop Rod, 5/8-11 UNC-2A, 72"L (1800 mm), Gold
10557-003	Threaded Rod I-Beam Clamp for 5/8-11 Threaded Rod, Gold
03003-002	Slip-On Lock Nut, 5/8-11, Gold
10595-712	Rack-to-Runway Mounting Kit, for 12"W (300 mm) Cable Runway
10595-718	Rack-to-Runway Mounting Kit, for 18"W (460 mm) Cable Runway
12362-718	Cable Runway Center Support Kit, for 18"W (460 mm) Cable Runway
10822-718	Cable Runway E-Bend, For 18"W Cable Runway
10608-701	Vertical Wall Brackets, for Cable Runway

Note: All part numbers provided are in Black color. Other options also available.

Adjustable Cable Runway installation



Other Options - Industrial Enclosures

RMR® Industrial Enclosures	
Design it to order	RMR Modular Enclosure, UL Type 12, IP 55
Design it to order	RMR Swing Wall-Mount Enclosure, UL Type 12, IP 55
Design it to order	RMR Fixed Wall-Mount Enclosure, UL Type 12, IP 55
Design it to order	RMR Free-Standing Enclosure, UL Type 4, 12, IP 55/66
Design it to order	RMR Floor-Mount Enclosure, UL Type 4, 12, IP 55/66

Additional Sizes Available Online

- Wide range of high-quality, standard solutions
- Fast, easily configurations and ordering
- Kitting of accessories to simplify ordering
- Modified standard enclosures to match specific Human Machine Interface (HMI) requirements
- Competitive lead times to match your schedule



RMR Modular Enclosure



RMR Swing Wall-Mount Enclosure



RMR Fixed Wall-Mount Enclosure



RMR Free-Standing Enclosure



RMR Floor-Mount Enclosure



RMR Standard Wall-Mount Enclosure

Configure to Order Online:



CPI Product Designer creates unique industrial enclosures quickly and easily by allowing you to select the size, features and accessories needed for a specific application. Access this tool at chatsworth.com/product-designer

Other Options - Oberon® Wireless Enclosures

Q: How do you secure and protect wireless access points?

Wireless Enclosures

Secure. Aesthetic. Convenient.

1047-CW9176	Oberon Wi-Tile™ Suspended Ceiling Enclosure with Locking Cisco CW9176 AP Door, 3"H x 23.75"W x 23.75"L (76 mm x 603 mm x 603 mm), White
1075-ARAP755	Oberon Wi-Tile™ Locking Recessed Hard Ceiling Access Point Enclosure, 2.8"H x 14.3"W x 14.3"D (72 mm x 364 mm x 364 mm) Back Box, HPE Aruba AP-755 Door, White
1440-ARAP735	Oberon In-Plane™ Recessed Suspended Ceiling Access Point Installation Kit, 3.5"H x 14"W x 14"D (89 mm x 360 mm x 360 mm) Back Box, Torsion Spring-Attached HPE Aruba AP-735 Trim, White
1442-CW9178	Oberon In-Plane™ Recessed Wall and Hard-Lid Ceiling Access Point Installation Kit for Existing Construction, 3.0"H x 14"W x 14"D (76 mm x 360 mm x 360 mm) Back Box, Torsion Spring-Attached Cisco CW9178 Trim, White
1007-ARAP735	Oberon H-Plane™ Locking Right Angle Wall-Mount with Aruba AP735 Trim, 5"H x 14.3"W x 14.2"L (127 mm x 363 mm x 362 mm), White
1016-00	Oberon Hi-Bar™ Indoor Plastic Wi-Fi Access Point Lock Box with Opaque Door, 18"H x 12"W x 5.2"D (457 mm x 305 mm x 131 mm), White
1020-12125	Oberon Skybar NEMA 4 Plastic Wi-Fi Access Point Enclosure with Opaque Screw-On Cover, 16.3"H x 14.4"W x 5.5"D (413 mm x 366 mm x 140 mm)
1021-00	Oberon Skybar NEMA 4 Plastic Wi-Fi Access Point Enclosure with Opaque Screw-On Cover, 21"H x 13.5"W x 5.5"D (533 mm x 343 mm x 140 mm), Gray
3032-00-BK-48	Oberon NetPoint™ Wi-Fi Beveled Top Bollard, 48"H x 12" Diameter (1219 mm x 305 mm Diameter), Black. NetPoint Bollards are available in different heights and finishes.

Note: Access points are not included. Other options are available including doors and trims to match other APs and additional brackets to mount enclosures and antennas.



A division of Chatsworth Products



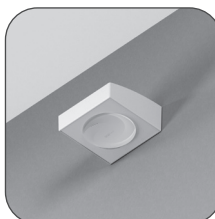
**Wi-Tile Model
1047-CW9176**



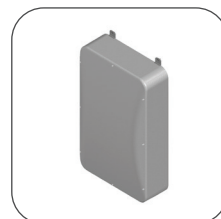
**In-Plane Model
1075-ARAP755**



**In-Plane Model
1442-CW9178**



**H-Plane Model
1007-ARAP735**



Skybar Model 1021



NetPoint Model 3032

Don't see your AP listed, find the right enclosure or mount quickly with the Oberon Solutions Finder: chatsworth.com/solutions-finder



CHATSWORTH PRODUCTS

While every effort has been made to ensure the accuracy of all information, CPI does not accept liability for any errors or omissions and reserves the right to change information and descriptions of listed services and products.

©2025 Chatsworth Products, Inc. All rights reserved. Chatsworth Products, Klik-Nut, CPI, CPI Passive Cooling, CUBE-IT, eConnect, EuroFrame, Evolution, GlobalFrame, MegaFrame, Motive, Oberon, QuadraRack, RMR, Saf-T-Grip, Secure Array, SeismicFrame, SlimFrame, TeraFrame, Velocity, Wi-Tile and ZetaFrame are federally registered trademarks of Chatsworth Products. Elevate, H-Plane, Hi-Bar, In-Plane, M-Frame, NetPoint, Simply Efficient, and Skybar are trademarks of Chatsworth Products. All other trademarks belong to their respective companies. Rev.05/25 MKT-CPI-138