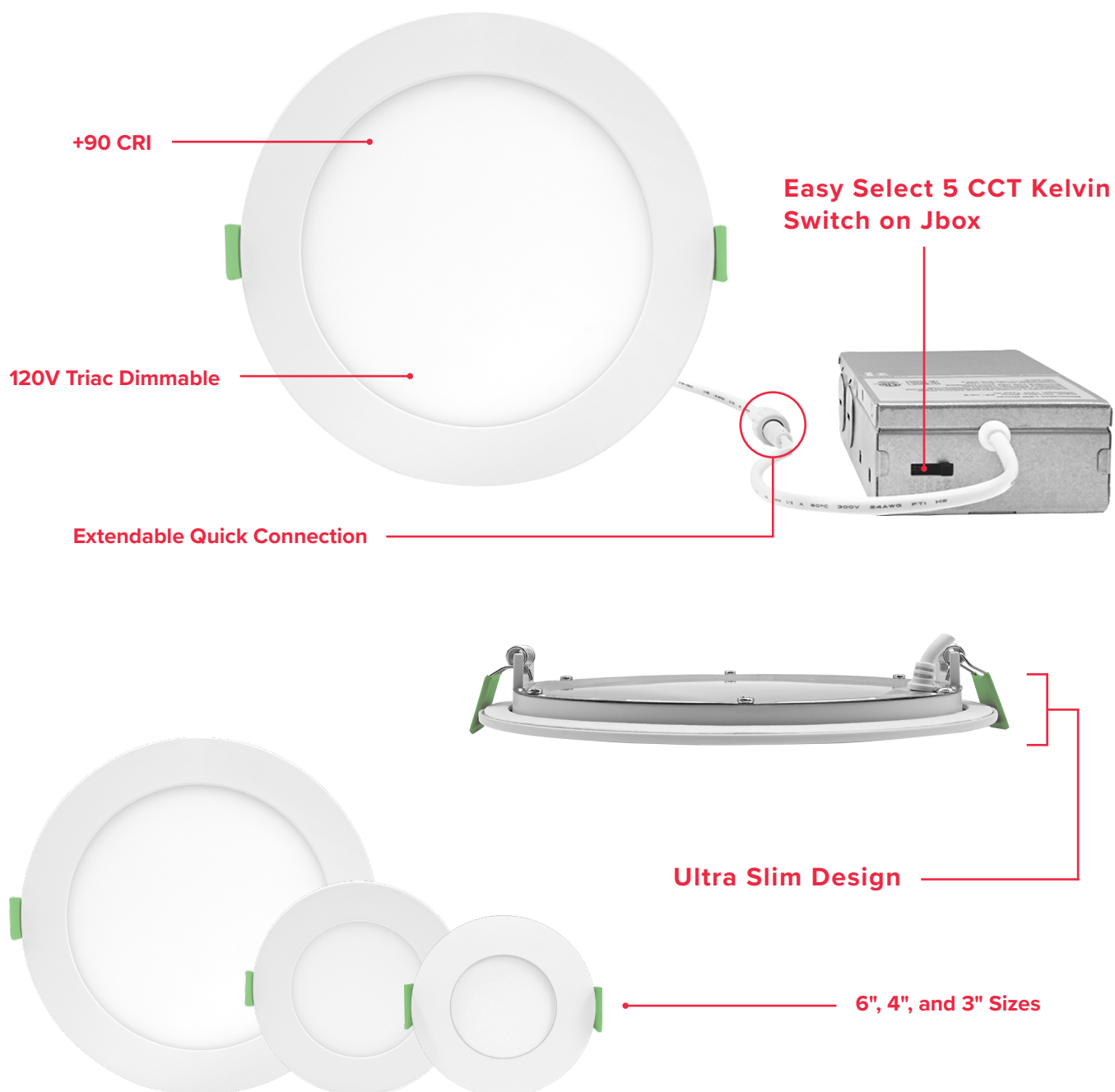




WAFER SERIES

The Wafer Series (WFR) features an innovative ultra-thin design that eliminates the need for a recessed housing—expanding the lighting possibilities of traditionally difficult-to-illuminate spaces. 5 CCT field selectable and 120V Triac dimmable, the series is offered in a range of three sizes sure to suit any interior.



888.493.5559



info@eslvision.com



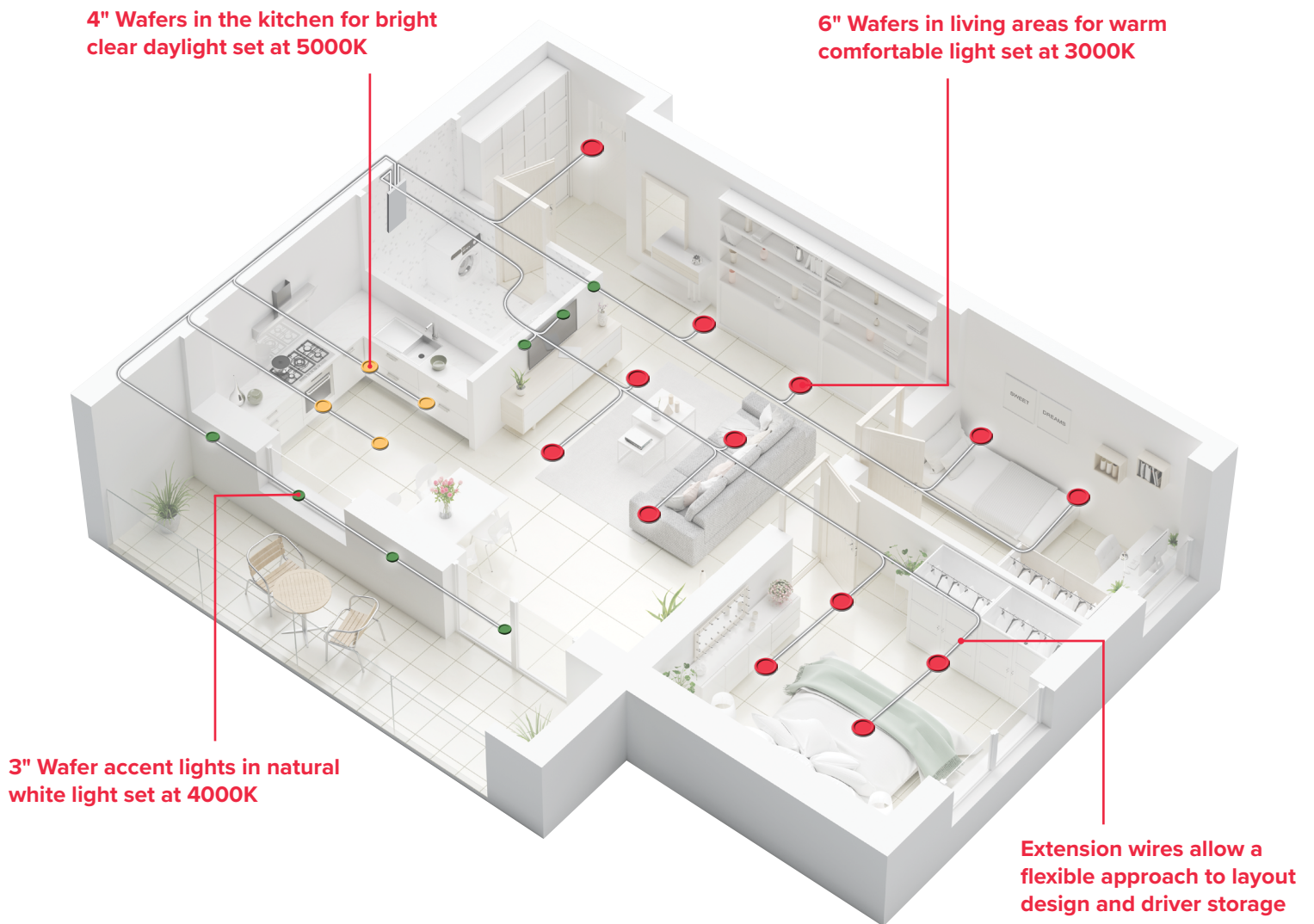
www.eslvision.com

ESL-MKTG-SS-WFR3-2302

Copyright © 2023 ESL Vision, LLC. All rights reserved. Rev: 02/07/23

TAKE YOUR INSTALLATION TO THE NEXT LEVEL

Rough-In Plates for new construction pre-wiring and easier planning. Quick-connect extension wires to expand the possibilities of your layouts.



3", 4" and 6" Wafer Lamps with selectable 5CCT combined with quick-connect extensions adapt to the constraints of any lighting project.

Accessories



Down Light 4"
Rough-In Plate

Down Light 6"
Rough-In Plate



10' Quick Connect
Wafer Wire Extension

20' Quick Connect
Wafer Wire Extension



888.493.5559



info@eslvision.com



www.eslvision.com

ESL-MKTG-SS-WFR3-2302

Copyright © 2023 ESL Vision, LLC. All rights reserved. Rev: 02/07/23