

**Key Features & Benefits:**

- Resistant to Shock and Vibration
- Emergency Back Up Capable
- IK10 Impact Rated
- ABS Certified
- Marine Rated Powder Coating
- Standard 10kV Surge Protection

Project: \_\_\_\_\_

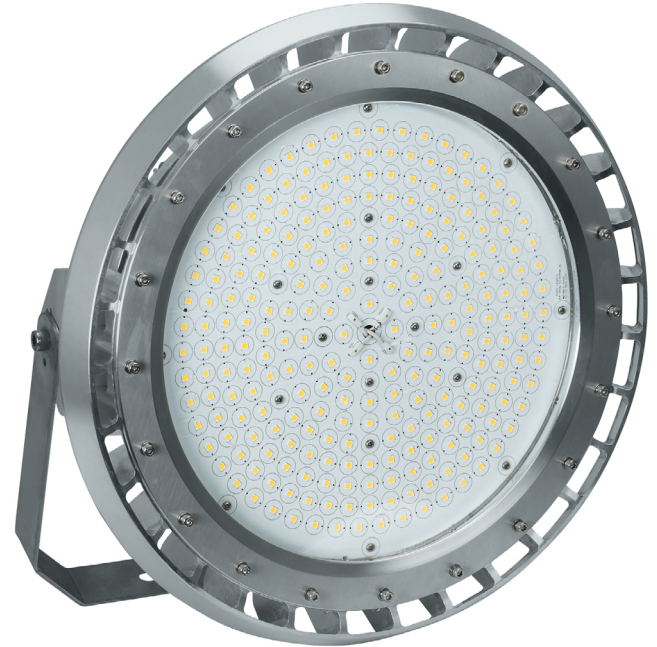
Date: \_\_\_\_\_

Catalog #: \_\_\_\_\_

Notes: \_\_\_\_\_

**Product Specifications:**

Wattage: 150W  
 Kelvin: 5000K  
 Lumen Output: 21,000 Lumens  
 Voltage: 100–277 VAC  
 Input Frequency: 50/60 Hz  
 Surge Protection: 10kV  
 Power Factor: >0.9  
 Operating Temperature: -40°F to 140°F (-40°C to 60°C)  
 Dimming: 0–10V  
 Dimming Range: 0-100%  
 Dim to Off: true  
 CRI: >70  
 Beam Angle: 120°  
 Dimensions: L14.49" x W14.49" x H7.72"  
 Weight (lbs): 0  
 Finish: GR (Grey)  
 L70 Lifetime Calculated per TM21: 150,000 hours  
 Warranty: 7 Year



**Ordering Guide:**

ESL	TYPE	SIZE	WATTS	GEN	KELVIN	VOLTAGE	LENS	BEAM ANGLE
ESL	HZRHB	L	150W	2	50K			120°D
	(HZRHB) Hazardous Round High Bay	(S) Small (M) Medium (L) Large (XL) Extra Large	(20W) 20 Watts (40W) 40 Watts (60W) 60 Watts (80W) 80 Watts (100W) 100 Watts (120W) 120 Watts	(2) Class 1 Division 2	(30) 3000 Kelvin (40) 4000 Kelvin (50) 5000 Kelvin	(Blank) MV 120–277 VAC (HV) 200–480 VAC (DC12) DC12–48V		(40D) 40° (60D) 60° (90D) 90° (120D) 120° Default

### FACTORY INSTALLED OPTIONS

ESL-HZRHB-HOOK-GR	Pendent Mounting Hook, Grey Finish
ESL-HZ-WMJB-90D-GR	Wall Mounting to Junction Box 90 Degree, Grey Finish
ESL-HZ-WMJB-25D-GR	Wall Mounting to Junction Box 25 Degree, Grey Finish
ESL-HZRHB-EMG	Emergency Backup Unit for Hazardous Round High Bay Series

### INSTALLED ACCESSORIES

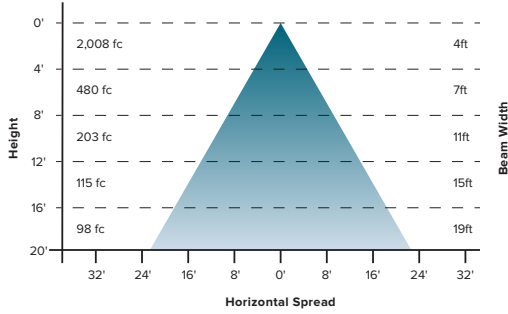
ESL-HZRHB2-S-ARF	Aluminum Reflector for Small Size
ESL-HZRHB2-M-ARF	Aluminum Reflector for Medium Size
ESL-HZRHB2-L-ARF	Aluminum Reflector for Large Size
ESL-HZRHB2-S-ARF-30D	30° Cut Off Aluminum Reflector for Small Size
ESL-HZRHB2-M-ARF-30D	30° Cut Off Aluminum Reflector for Medium Size
ESL-HZRHB2-L-ARF-30D	30° Cut Off Aluminum Reflector for Large Size

### Catalog Data:

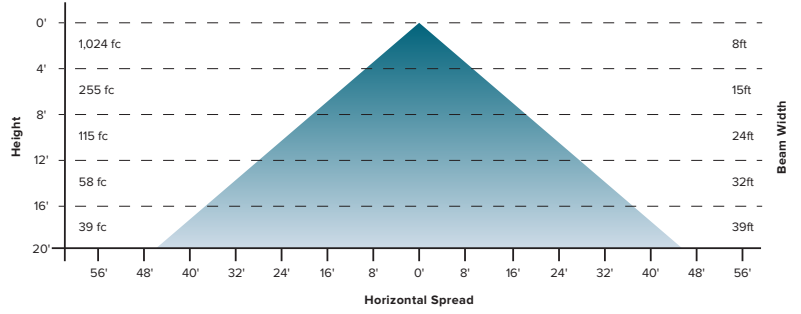
ITEM#	WATTAGE	KELVIN (xx)	LUMENS	EFFICACY lm/W	INPUT VOLTAGE	DIMENSIONS (LxWxH)
ESL-HZRHB-S20W-2XX-XX-XX-XX	20W		2,800	140	(Blank) MV 100–277 VAC (DC12) DC12–48V	9.0" x 9.0" x 6.2"
ESL-HZRHB-S40W-2XX-XX-XX-XX	40W		5,600	140		
ESL-HZRHB-M60W-2XX-XX-XX-XX	60W		8,400	140		
ESL-HZRHB-M80W-2XX-XX-XX-XX	80W		11,200	140		
ESL-HZRHB-L100W-2XX-XX-XX-XX	100W		14,000	140	(Blank) MV 100–277 VAC (HV) 200–480 VAC (DC12) DC12–48V	14.5" x 14.5" x 7.7"
ESL-HZRHB-L120W-2XX-XX-XX-XX	120W		16,800	140		
ESL-HZRHB-L150W-2XX-XX-XX-XX	150W		21,000	140		
ESL-HZRHB-L200W-2XX-XX-XX-XX	200W		28,000	140		
ESL-HZRHB-XL250W-2XX-XX-XX-XX	240W		33,600	140		
ESL-HZRHB-XL300W-2XX-XX-XX-XX	280W		39,200	140		
ESL-HZRHB-XL400W-2XX-XX-XX-XX	400W		56,000	140	18.9" x 18.9" x 8.3"	

**Lighting Distribution:**

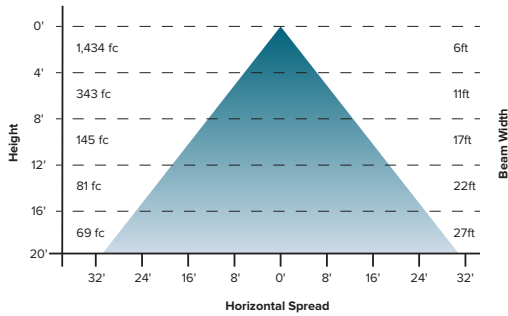
**40 Degree**



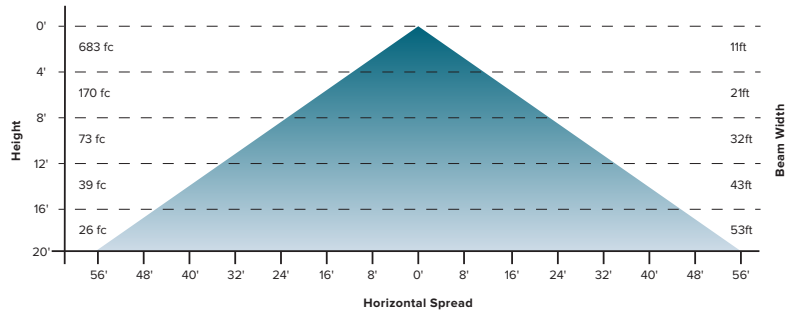
**90 Degree**



**60 Degree**



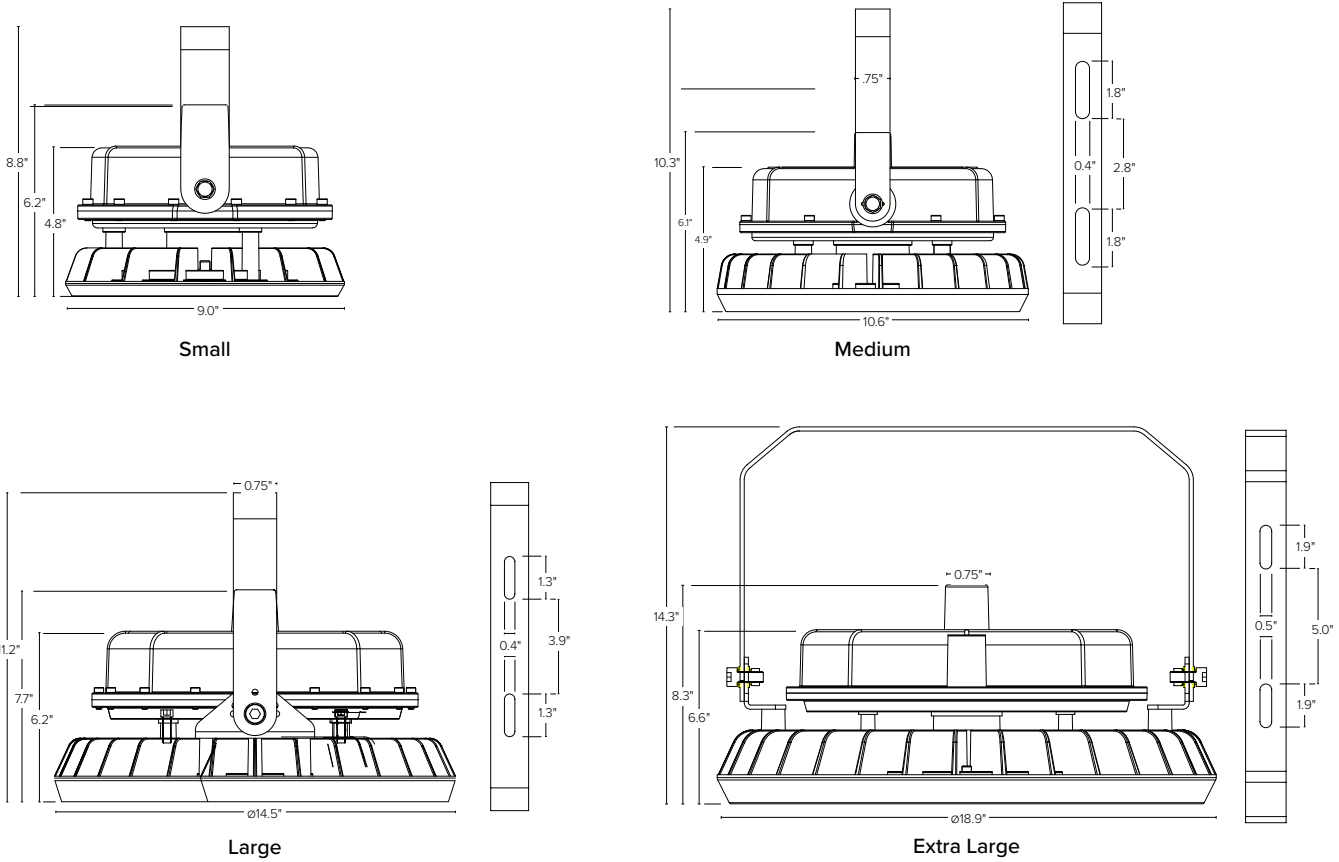
**120 Degree**



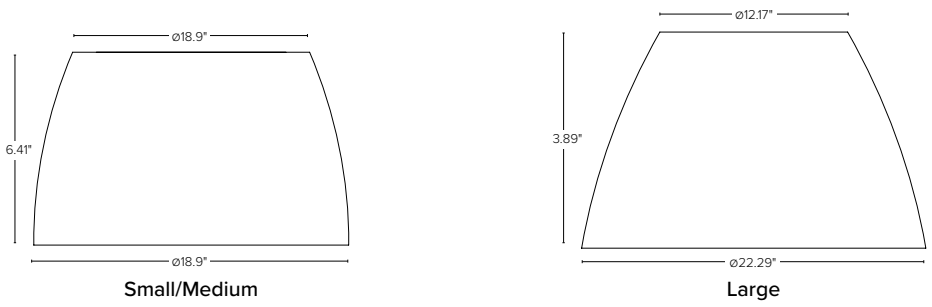
**Lumen Ambient Temperature (LAT) Multipliers:**

AMBIENT		LUMEN MULTIPLIER
0 °C	32 °F	1.02
10 °C	50 °F	1.01
20 °C	68 °F	1.00
25 °C	77 °F	1.00
30 °C	86 °F	1.00
40 °C	104 °F	0.99
50 °C	122 °F	0.96

**Fixture Dimensions:**



**Flat LED Module & Lampshade**



**Flat LED Module & 30° Cutoff Lampshade**

