

Key Features & Benefits:

- IntelliSense™ Sensor Enabled
- Kelvin and Wattage Selectable
- 0–10V Dimming

Project: _____

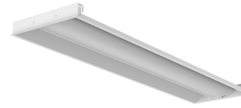
Date: _____

Catalog #: _____

Notes: _____

Product Specifications:

Selectable Wattage: 20W–25W–30W
 Selectable Kelvin: 3500K–4000K–5000K
 Max Lumen Output: 4,500 Lumens
 Max Efficacy: 150 lm/W
 Voltage: 120–277 VAC
 Input Frequency: 50/60 Hz
 Operating Temperature: -4°F to 122°F (-20°C to 50°C)
 Dimming: 0–10V
 Dimming Range: 0%-100%
 Dim to Off: true
 CRI: >80
 Dimensions: L47.8" x W11.69" x H1.97"
 Weight (lbs): 6.61
 Finish: WH (White)
 L70 Lifetime Calculated per TM21: 100,000 hours
 Warranty: 5 Year



Ordering Guide:

ESL	TYPE	SIZE	SELECTABLE WATTAGE	SELECTABLE KELVIN
ESL	ISS-630	14	2030W	3550
	(ISS-630) IntelliSense™ Series Troffer	(14) 1x4 (22) 2x2 (24) 2x4	(1835W) 18W–26W–35W - 1x4, 2x2 (2644W) 26W–35W–44W - 2x4	(3550K) 3500K–4000K–5000K

FACTORY INSTALLED OPTIONS

EM5	Emergency Backup Battery Unit, Auto Test Function, 5 Watts Output, 90 Minutes Minimum, 120–277 VAC Input, 20–50 VDC Output, Closed Lead Wiring, UL Listed for Factory or Field Install
EM9	Emergency Backup Battery Unit, Auto Test Function, 9 Watts Output, 90 Minutes Minimum, 120–277 VAC Input, 10–300 VDC Output, Open Terminal Block Wiring, UL Listed for Factory or Field Install, Title 20

FIELD INSTALLED ACCESSORIES

ESL-ACCS-14-SMK-01	Troffer Surface Mount Kit for 1x4
ESL-ACCS-22-SMK-01	Troffer Surface Mount Kit for 2x2
ESL-ACCS-24-SMK-01	Troffer Surface Mount Kit for 2x4
ESL-ACCS-14-SMK-02	Troffer Surface Mount Kit for 1x4
ESL-ACCS-22-SMK-02	Troffer Surface Mount Kit for 2x2
ESL-ACCS-24-SMK-02	Troffer Surface Mount Kit for 2x4
ESL-ACCS-14-FLK-01	Troffer Flange Kit for 1x4
ESL-ACCS-22-FLK-01	Troffer Flange Kit for 2x2
ESL-ACCS-24-FLK-01	Troffer Flange Kit for 2x4
ESL-ACCS-14-LENS-01	Replacement Lens for Troffer 1x4
ESL-ACCS-22-LENS-01	Replacement Lens for Troffer 2x2
ESL-ACCS-24-LENS-01	Replacement Lens for Troffer 2x4

Catalog Data:

ITEM#	SELECTABLE WATTAGE	SELECTABLE KELVIN	MAX LUMEN OUTPUT	MAX EFFICACY (lm/w)	DIMENSIONS (LxWxH)	DLC QPL CODE
ESL-ISS-630-14-2030W-3550K	20W–25W–30W	3500K–4000K–5000K	4,050	135	47.8" x 11.7" x 1.97"	S-OZSFHX
ESL-ISS-630-22-2030W-3550K	20W–25W–30W	3500K–4000K–5000K	4,050	135	23.7" x 23.7" x 1.97"	S-GZ0869
ESL-ISS-630-24-2040W-3550K	20W–30W–40W	3500K–4000K–5000K	5,400	135	47.8" x 23.7" x 1.97"	S-MYN8CR S-PNF9N3 (LOWBAY)

Electrical Load — Standard Voltage:

SYSTEM WATTS	INPUT CURRENT				INPUT VOLTAGE	INPUT FREQUENCY	POWER FACTOR	THD	OPERATING TEMPERATURE	DIMMING
	120 VAC	208 VAC	240 VAC	277 VAC						
20	0.17	0.10	0.08	0.07	120–277 VAC	50/60 Hz	>0.9	<15%	-4°F to 122°F (-20°C to 50°C)	0–10V Dim to Off
25	0.21	0.12	0.10	0.09	120–277 VAC	50/60 Hz	>0.9	<15%	-4°F to 122°F (-20°C to 50°C)	0–10V Dim to Off
30	0.25	0.14	0.13	0.11	120–277 VAC	50/60 Hz	>0.9	<15%	-4°F to 122°F (-20°C to 50°C)	0–10V Dim to Off
40	0.33	0.19	0.17	0.14	120–277 VAC	50/60 Hz	>0.9	<15%	-4°F to 122°F (-20°C to 50°C)	0–10V Dim to Off

Lumen Ambient Temperature (LAT) Multipliers:

AMBIENT	LUMEN MULTIPLIER
0 °C 32 °F	1.02
10 °C 50 °F	1.01
20 °C 68 °F	1.00
25 °C 77 °F	1.00
30 °C 86 °F	1.00
40 °C 104 °F	0.99
50 °C 122 °F	0.96

FIELD INSTALLED SENSORS

ESL-ISS-SSEN-01	SoloSense™ – Plug and Play 4 Wire Stand Alone PIR + Daylight Harvesting Sensor for 600 Series
ESL-ISS-MSEN-01	MultiSense™ – Plug and Play 4 Wire Network PIR + Daylight Harvesting Sensor 600 Series



ESL-ISS-MSEN-01

MultiSense™ – PIR & Daylight Harvesting Sensor

- Bluetooth Network Lighting Control
- Wireless Commissioning
- Wireless Zoning/Grouping
- High & Low Trim Capable
- Occupancy Sensing
- LLLC Capable
- Vacancy Sensing
- Daylight Harvesting
- Scene & Zone Control



ESL-ISS-SSEN-01

SoloSense™ – PIR & Daylight Harvesting Sensor

- Stand Alone Lighting Control
- Occupancy Sensing
- Vacancy Sensing
- Daylight Harvesting

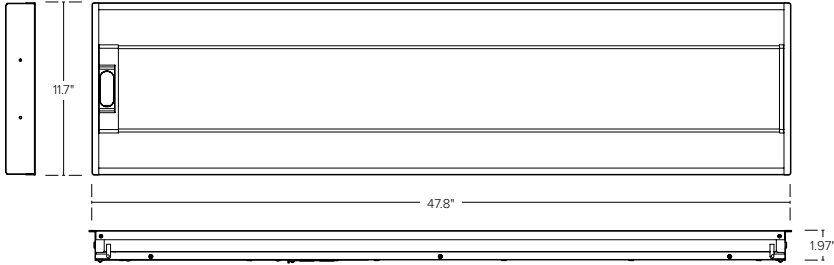
FIELD INSTALLED MULTISENSE™ ACCESSORIES

ESL-ISS-PP-01	MultiSense™ Network Zone Controller AC 120–277 VAC 20A
ESL-ISS-WS-B3B-01	MultiSense™ Network Wall Switch Battery Powered 3 Buttons
ESL-ISS-WS-A3B-01	MultiSense™ Network Wall Switch AC Powered 3 Buttons
ESL-ISS-WS-B8B-01	MultiSense™ Network Wall Switch Battery Powered 3 Buttons
ESL-ISS-EMG-LC-01	MultiSense™ Network AC Emergency Lighting Controller 120–277 VAC UL924
ESL-ISS-MSEN-ACS-01	MultiSense™ Network PIR Ceiling Sensor 120–277 VAC input 8A
ESL-ISS-MSEN-ACS-02	MultiSense™ Network Ceiling Sensor Dual Mode PIR & Ultrasonic 120–277 VAC
ESL-ISS-MSEN-BCS-01	MultiSense™ Network Ceiling Sensor PIR & Daylight Harvesting Battery Power
ESL-ISS-GTW-01	MultiSense™ Network Ceiling Sensor Real Time Clock & Energy Monitoring Dongle

Dimensions:

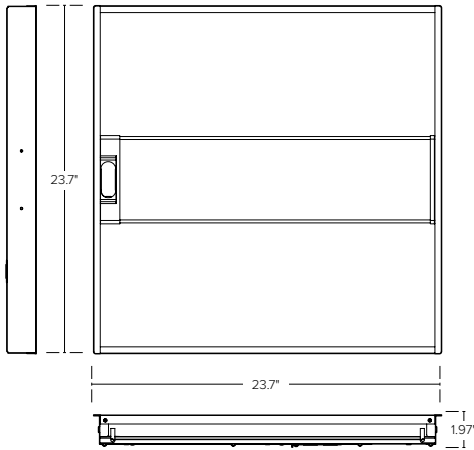
1x4 Troffer

ESL-ISS-630-14-2030W-3550K



2x2 Troffer

ESL-ISS-630-22-2030W-3550K



2x4 Troffer

ESL-ISS-630-24-2040W-3550K

