



HM Revenue
& Customs

Welcome to Customs Declaration Services (CDS) Stakeholder Event

Monday, 10th April 2017

Steve Casey
External Stakeholder Management and Engagement Lead

Agenda

- 10.00 Welcome and objectives
- 10.10 IBM Spec/Schema
- 10:50 Coffee Break
- 11.00 CDS Demo
- 11:45 Transition and Readiness
- 13.00 Close





HM Revenue
& Customs

Customs Declaration Services (CDS) Stakeholder Event

Event objectives & Agenda

Stella Jarvis
CDS Programme Director



Objectives

Key objectives for today will be;

- Take a first look at a CDS Demo
- To understand your views on the schema's and IBM spec distributed recently
- Identify areas of interest that you need more dedicated time and discussions on.
- Introducing you to the Transition relationship manager for your sector and explore the level, type and frequency of engagement you would like in the future.



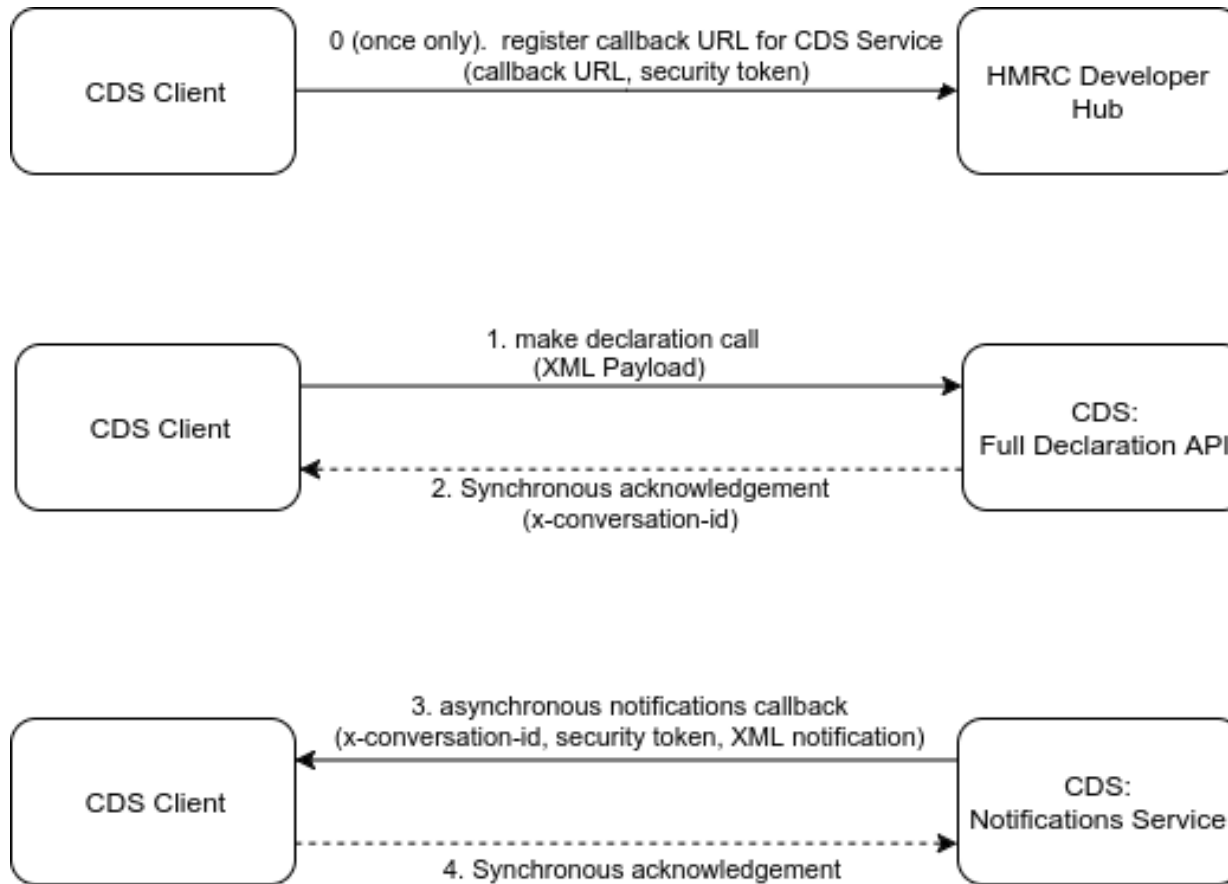


HM Revenue
& Customs

IBM Spec/Schema

Beverley Martin - Digital
Programme Manager

Full Declaration Pattern





HM Revenue
& Customs

CDS Demo

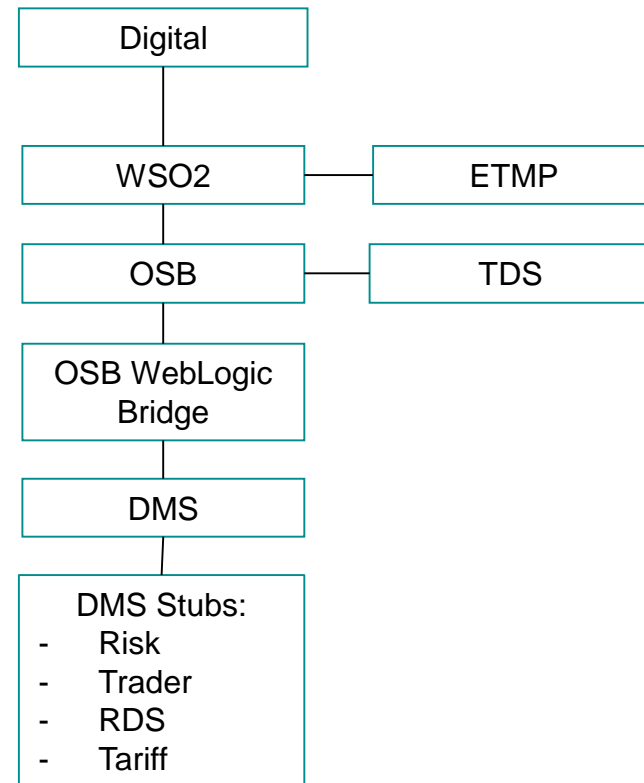
Dave Morgan, Alan Hughes & Avinder Bahra

Demo Overview

Demo Scenarios:

- **Scenario 1:** Trader Register for CDS
 - Registering with an ID
 - Registering without an ID
- **Scenario 2:** Submission of a Supplementary Declaration Ex Warehouse which passes all validation, trader and risk checks
- **Scenario 3:** Submission of a Supplementary Declaration Ex Warehouse which triggers a risk rule
- **Scenario 4:** Submission of a Supplementary Declaration Ex Warehouse which fails DMS validation

Demo Environment:



SCENARIO 1: TRADER REGISTRATION FOR CDS

A TRADER REGISTERS FOR CDS TO OBTAIN AN EORI NUMBER SO THAT THEY CAN THEN SEND DECLARATIONS THROUGH TO THE CUSTOMS DECLARATION SERVICE (CDS).



TRADER

1

Trader logs onto the Government Gateway (GGW)

2

Trader is requested to complete identification questions (Org type, Comp name, UTR)

3

Trader details are validated against ETMP, and displayed back to the Trader

4

Registration process completed

8

EORI disclosure form

7

Trader requested to provide VAT details

6

Trader requested to provide Company Details (shortened / alternative name, Date of establishment / DOB, SIC code)

5

Start CDS process to obtain an EORI. Trader provides additional contact details for a Nominated contact

9

Trader is displayed a summary of data provided before final submission

10

Trader is provided with an EORI number



SCENARIO 2: SUBMISSION OF A SUPPLEMENTARY DECLARATION

A TRADER IS ABLE TO SUBMIT HIS SUPPLEMENTARY DECLARATION (EX-WAREHOUSE) INTO THE CUSTOMS DECLARATION SERVICE, TO OBTAIN CLEARANCE TO REMOVE THE GOODS FROM THE WAREHOUSE.



TRADER

1

At this point, the Trader submits his Supplementary Declaration into the Customs Declaration Service via the MDTP Trader facing API

2

The message undergoes initial syntax validation

3

The declaration passes the initial syntax validation and is successfully received into DMS.

4

The reference data from the declaration is validated using a the 'Reference data service'. In this demo this is stubbed.

5

As part of wider validation checks, the Traders EORI number is also validated using a component known as 'Trader data services'. In this demo this is stubbed.

6

Trader data services confirm that the EORI number exists and this element of the declarations validation check is therefore successful.

7

The 'Country Code and Geographic Region' which was used on his declaration is a validated by the Tariff component, and again this is successful. In this demo this is stubbed.

8

The declaration is assessed against the Risk component. In this demo this is stubbed

The declaration does not hit any risk rules.

9

At this point, the Traders Declaration is therefore deemed to be accepted by CDS

10

The Trader receives an electronic confirmation of this which also includes his Reference No to allow him to track the status of his declaration.

SCENARIO 3: SUBMISSION OF A SUPPLEMENTARY DECLARATION WITH RISK ANALYSIS DOCUMENT CONTROL

A TRADER IS ABLE TO SUBMIT HIS SUPPLEMENTARY DECLARATION (EX-WAREHOUSE) INTO THE CUSTOMS DECLARATION SERVICE, TO OBTAIN CLEARANCE TO REMOVE THE GOODS FROM THE WAREHOUSE. THE RISK RULE DETERMINES THAT ADDITIONAL CHECKS ARE REQUIRED.



TRADER

1

At this point, the Trader submits his Supplementary Declaration into the Customs Declaration Service via the MDTP Trader facing API

2

The message undergoes initial syntax validation

3

The declaration passes all the checks shown in the previous scenario.

4

The declaration is assessed against the Risk component. In this demo this is stubbed.

10

The Trader receives an electronic confirmation.

5

The declaration does hit a risk rule and the following response is received: 'Documentary inspection required'.



SCENARIO 4: SUBMISSION OF A SUPPLEMENTARY DECLARATION WITH DATA VALIDATION FAILURE

A TRADER IS ABLE TO SUBMIT HIS SUPPLEMENTARY DECLARATION (EX-WAREHOUSE) INTO THE CUSTOMS DECLARATION SERVICE, TO OBTAIN CLEARANCE TO REMOVE THE GOODS FROM THE WAREHOUSE. THE DATA VALIDATION CHECKS FAIL.



TRADER

1

At this point, the Trader submits his Supplementary Declaration into the Customs Declaration Service via the MDTP Trader facing API

2

The message undergoes initial syntax validation

3

The declaration passes the initial syntax validation and is successfully received into DMS.

4

The data from the declaration is validated by DMS.

10

The Trader receives an electronic confirmation of the validation error.

5

The data validation fails and the declaration is Rejected.





HM Revenue
& Customs

Transition and Readiness

Pat Holohan, Mark Hughes & David Guild
Transition & Business Readiness Teams

Purpose of the session

To provide you with the opportunity to;

- View and hear about the CDS transition plan milestones.
- Update you on customs business readiness activities.
- Participate in a breakout session to seek your views, comments and suggestions on the transition plan milestones.
- Meet the CDS transition team lead that will support you as part of ongoing CDS trade partner engagement.



Phases to Transition

Incremental Delivery aligned with the timeline

Phase 1	Technology Alignment & Enablers e.g. migration of financial services, digital services etc.
Phase 1a	Aims to deliver technology changes or internal changes which would remain invisible for the Trade and accordingly would not require Trade's participation during testing.
Phase 1b	Aims to deliver technology changes and the first Trade facing 'enabler' functionality which would require Trade involvement during testing.
Phase 2	Core Declaration Processing including move to XML. Only known UCC changes – not including longer-term legislative changes (UCC / EU exit).
Phase 2a	Trade End-to-End Testing and pilots for declaration processing functionality.
Phase 2b	Full functionality. Final Trade end to end test; continue pilots.
Phase 2c	Complete the roll out of a stable CDS service (to non-pilot declarants). Declarant migration should be completed before the peak/blackout period.



Transition Approach

Phase 1: Enabler live releases required for trade testing

- Trader Registration & Subscription (includes Identity Management and Agents)
 - From August 2017 will provide the facility to register and subscribe for an Economic Operator Registration and Identification (EORI) number.
 - EORI will form part migration to the Trader Data Service in November 2017.
- Tariff Data Services (Data Feed for Software Houses, Duty Calculator, Reference Data (e.g. CPCs and exchange rates)) – August 2017
- Financial management (including the Business Tax Account; “Deferment” (statements, direct debits, authorisations); “FAS” payments; refunds, VAT evidence) – January 2018



Transition Approach

Phase 2: Declaration Processing releases (with groupings) for trade testing

- Supplementary Declarations (SDW) and Import EIDR– December 2017
- Supplementary Declaration Import and C21 including NOP– March 2018
- Standard Declaration Import and SFDs– May 2018
- Standard Declaration Export– May 2018

Further draft details of declarations within each release are highlighted in the following slide.



Transition Approach

Draft of the declaration types for releases

December 2017
Import and Export: Supplementary Declaration ex-warehouse (SDW). Import: Entry in the Declarants Records (EIDR) Ex-Warehouse Notification of Presentation (NOP). Import: EIDR Supplementary Declaration Import (SDI).
March 2018
Import: Simplified Declaration Procedure (SDP) Supplementary Declarations (SDI (non-warehouse)). Import: C21 procedure, including NOP for EIDR frontier release.
May 2018
Import: Full Declaration and SDP frontier releases (SFDs).
May 2018
Export: Customs Supervised Exports (CSE) Supplementary Declaration Exports (SDE). Export: SDP Supplementary Declaration Exports (SDE). Export: Frontier and inland clearances of goods: CSE NOP releases' C21. Pre-shipment advice, including SDP. Exit Summary Declarations. Full Export Declarations. Re-export Notifications.



Trade testing

Timescales for environments

- A trade test environment will be made available via a pilot version in April. We will be seeking volunteer trade organisations to work with HMRC to create through an iterative process the Live like test environment by November 2017.
- Functional Integration Test Environment (Incremental drops) – From September 2017.
- Live Like Environment (Milestone Drop) – From November 2017.



Strategic Planning Assumptions

- Milestones taken from CDS End-to-End Delivery Plan.
- A few weeks' live-like testing should be enough to establish that functionality is stable and safe to release for live pilot use.
- Once delivered, functionality remains continuously available for testing – there is no finite test window.
- The pilots are effectively live, but only for limited functionality. The CDS Live milestone is when CDS is functionally-complete.
- The Dependencies are the capabilities, not necessarily trade-facing, which are needed to support each declaration processing release.



Business Readiness

- HMRC & Border Force ‘internal’ readiness for CDS
- Clear need to update and upgrade our Gov.uk guidance products to support our colleagues, and our customers, in using CDS.
- The aim : To provide Better content; Better accessibility; Easier self help.
- Internal and external consultation to establish genuine user needs.
- A User Story approach to demonstrate the ‘What’ and the ‘Why’.
- A break out session so you can feed in *your* story:

As a...(e.g. *Agent*)...**I need to...**(e.g. *know how to*)...**so that...**(e.g. *I can....*)



Breakout session

To cover the following questions in relation to the transition approach / plan and user stories:

- What are your views on the transition plan milestones?
- How does the grouping of functionality impact/influence your approach for migrating to CDS?
- Which activities concern you most about your transition to CDS and what are the timescales involved?
- What information or support do you need from the CDS Transition team to support your internal activity?
- What are your user stories, for the guidance that you require in preparation for CDS and post go-live?



Next Steps

- Provide outputs from the Event.
- Engage with you to validate and expand the plan.
- Invite further comments.





HM Revenue
& Customs

Thank you for your participation

If you have any further enquiries, please contact us at

Customs Declaration Services mailbox

declarationservices.customs@hmrc.gsi.gov.uk