

gridComm



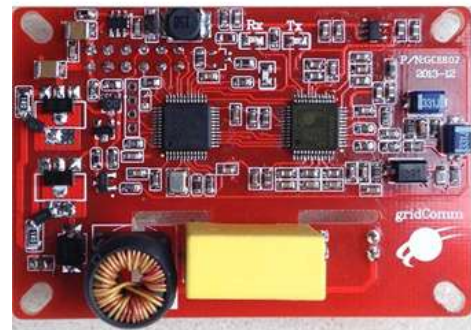
gridComm is a growing manufacturer of Power Line Communication Modules, founded in 2012 with an experienced team who are based in Singapore.

The robust communications products are ideally suited for the Industrial sector and in particular Smart Grid, Smart home lighting, street lighting alternative energy and sensor data communications for in-building applications, such as Fire sensors and alarms. These modules are ready for the anticipated growth for AMI transition driven by low cost, easy to install, highly reliable over distances to 3km.

Product Range

GC8802 - Intelligent OFDMA Power Line Communication Module

The GC8802 Power Line Communication (PLC) module is a complete ready to use system and is supplied with software. It is designed to automatically configure and self-adapt to the varying conditions on the power line resulting in extremely reliable and robust communications on the Low-Voltage power network. When powered with 12V DC @300mA power, the module functions as a full system-level PLC device. The gridComm GC8802 PLC Module demo node, enables the user to immediately commence evaluation and design with the product. The PLC module takes advantage of the industry-leading gridComm GC2200, an OFDMA (Orthogonal Frequency Division Multiple Access) Power Line Communication Transceiver.



Benefits

- Simple "plug-and-play" operation. Connects directly to AC and DC power lines.
- Robust Communications: Based on GC2200, communications over up to 18 OFDM channels
- Reliable, Predictable Communications: Automatic configuration in noisy environments via best channel scan to provide most robust and reliable data transmission

Applications

- Advanced Metering Infrastructure (AMR)
- Automated Meter Reading (AMI)
- Smart metering and smart grid
- Street lighting control
- Smart energy home area networking
- Home automation (HA)
- Building automation (BA)
- SCADA (Supervisory Control And Data Acquisition)

Features

- Next generation OFDMA transceiver with 175kbps maximum data rate
- Repeater mode to increase the distance coverage
- Frequency range: 5KHz to 500KHz
- Configurable for FCC, Arrib and CENELEC modes of operation
- Single Power Supply: DC12V @ 300mA
- Normal Power Consumption- Receiving (Rx) Mode: 12V DC @42mA
- Built-in AFE and line coupling Circuit
- Rx Sensitivity: -75 dBm
- Distance: Up to 3km tested (actual distance depends on power line conditions)

GC2200 Core Chip



GC9200/GC9301 – Intelligent Single and Three Phase DIN Rail OFDMA Power line Communication modem



The gridComm GC9200 & GC9301 are single and three phase DIN Rail Power Line Communication (PLC) modem. They automatically configure and self-adapt to the varying conditions on power lines, resulting in extremely reliable and robust communications in a Low-Voltage power network. The DIN Rail PLC modems utilize the industry-leading gridComm GC2200, an OFDMA (Orthogonal Frequency Division Multiple Access) Power Line Communication Transceiver.

- Simple "plug-and-play" with transparent protocol, needs only to pass data via RS485 to PLC modem to send to destination nodes
- Configurable with up to 54 Carrier Frequencies out of 100 pre-installed frequencies between 5KHz to 500KHz over 18 channels in 3QPSK, 3BPSK or 1BPSK modulation schemes with up to 18 levels of redundancy
- Multi-modes with Auto-Routing, Simple Broadcast, Point-to-Point and Broadcast Routing



gridComm Features

- Scans for best carrier frequencies in noisy environments and auto-configures for best network routing and self-adaption to provide the most robust and reliable data transmission
- Built-in auto-configuration of modulation schemes - 1BPSK, 3BPSK, 3QPSK
- Auto-Repeater to increase the distance coverage or to enable data packets to reach out to nodes non-contactable within the same network
- Simple "plug-and-play" once initialization of module is complete
- LED indicators to signal PLC node registration and network setup readiness
- Designed for use in Single-Phase and Three-Phase power lines
- Designed for use with AC or DC power lines
- Frequency range: Flexible configurations of carrier frequencies over 18 available channels from 5KHz to 500KHz with pre-configured CENELEC A/B/C/D, FCC, ARIB Bands options.

Broadband Technology 2000 Ltd

Semiconductors	Wireless/M2M	Sensors	Power	Internet of Things
<ul style="list-style-type: none"> • Mixed Signal IC's • Powerline Communications • RF Interface • Mixed Signal Active Filter 	<ul style="list-style-type: none"> • Antennae • GSM, GPRS & 3G Modems • 3G Routers • 3G & GPRS Gateways • 4G/LTE • GPS Tracking Units • RF Cables • Connectors 	<ul style="list-style-type: none"> • MEMS Accelerometers • MEMS Magnetic Sensors • MEMS Gyroscopes • MEMS Pressure Sensors <p>RF Microwave</p> <ul style="list-style-type: none"> • Amplifiers • Attenuators • Switches 	<ul style="list-style-type: none"> • Super Capacitors • Power Modules • Solid State Batteries <p>Interconnect</p> <ul style="list-style-type: none"> • Magnetics • Cable Assembly • Connectors 	<ul style="list-style-type: none"> • Powerline Communications -Narrow & Broadband

