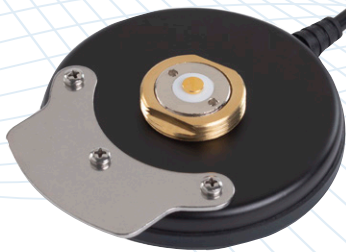
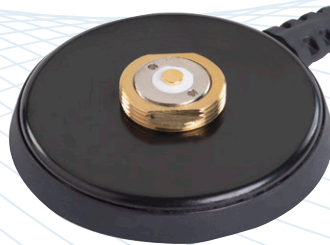


PCTMAG-HD Heavy Duty Magnetic Mount Series

Magnetic Mounts



PCTMAG-HD



PCTMAG-HD-NT



PCTMAG-HD-NF

PCTMAG-HD Heavy Duty Magnetic Mount Series

Magnetic Mounts

Easy to install and extremely rugged, this magnetic antenna mount platform provides robust magnet pull strength properties that keep the unit firm under high vibration conditions. All models in this platform have been tested and comply with SAE J1455 environmental standards. They are ideal for outdoor installations subject to severe environmental conditions, including agriculture, forestry, mining, sanitation, and public safety applications.

PCTEL Antenna Compatibility

Please select the recommended PCTMAG-HD model as shown below, according to the PCTEL antenna platform that will be used in your installation.

Antenna Platforms				Recommended Mount	Magnet Pull Strength
PCTCN 118 - 940 MHz 	BMAX 118 - 945 MHz 1850 - 1990 MHz 2.2 - 3.8 GHz 			PCTMAG-HD 0 MHz to 8 GHz 	86.6 lbs (typical)
PCTWSLMR-2 136 - 174 MHz 380 - 520 MHz 698 - 960 MHz 	BMLPV 600 - 960 MHz 1710 - 2700 MHz 	MUF 450 - 470 MHz 306 - 866 MHz 896 - 940 MHz 	MHB 132 - 174 MHz 144 - 174 MHz 	PCTMAG-HD-NT 0 MHz to 8 GHz 	86.6 lbs (typical)
BMHO (N Male interface) 2.4 - 2.5 GHz / 4.9 - 5.9 GHz 	BOA (N Male interface) 2.4 - 2.5 GHz (WiFi models) and 3.4 - 3.8 GHz (CBRS model). 			PCTMAG-HD-NF 0 MHz to 8 GHz 	70 lbs (typical)
	BOAH (N Male interface) 2.4 - 2.5 GHz 5.1 - 5.9 GHz 				

PCTMAG-HD Heavy Duty Magnetic Mount Series

Magnetic Mounts

Standard Configurations

Model	Coax	Connector	Tab	Color	Weight	Dimensions	Use only with PCTEL Antenna Platforms
Black 3-1/4" diameter magnetic mount; 1-1/8"-18 thread interface. For 0 MHz to 8 GHz frequencies. Magnet Pull Strength: 70 lbf							
PCTMAG-HD	12-feet Pro-Flex Plus 195	Attached TNC Male	18-8 Stainless Steel	Black	0.92 lbs (14.72 oz)	ø 83.8 mm (3.3") 93.9 mm (3.7") width with tab	Chrome nut and BMAX
PCTMAG-HD-NT	15-feet Pro-Flex Plus 195	Attached TNC Male	None	Black	0.79 lbs (12.64 oz)	ø 89.7 mm (3.53")	Chrome coil and MLPV
Black 3-1/4" diameter magnetic mount; N Female interface. For 0 MHz to 8 GHz frequencies.							
PCTMAG-HD-NF	15-feet Pro-Flex Plus 195	Attached SMA Male	None	Black	0.56 lbs (9 oz)	ø 87.8 mm (3.46")	MHO and BOA with N Male termination