

## Smarteq Wireless

**SMARTEQ**  
WIRELESS

Smarteq Wireless, based in Stockholm, develops and delivers antenna solutions. Their main customer segments are Energy, Vehicle, and Industry. Having a background in the Automotive industry also ensures that they have all logistics processes for high volume roll-outs in place and relevant certifications, such as IATF 16949 and ISO 14001. Smarteq is now part of PCTEL, Inc.

## Smarteq Antenna Products

### 168—170 MHz End-fed Half-wave Antenna

Robust, integrated mounting bracket



### 168—170 MHz End-fed Long-Range Antenna

Robust, integrated mounting bracket



### 707181 Terminal antenna 1/4-wave

Radio system: 2G/3G

Frequency: 824-960/1710-2170MHz

Gain: 2,15dBi



### 710097 Terminal antenna 1/4-wave

Radio system: 2G/3G

Frequency: 824-960/1710-1880MHz

Gain: 2,15dBi



### 710102 Terminal antenna 1/4-wave, N-male

Operating system: ISM

Frequency: 314-316MHz

Gain: 2,15dBi



### 710103 Terminal antenna 1/4-wave, N-male

Radio system: ISM 433/868MHz

Frequency: 433-436 / 868-870MHz

Gain: 2,15dBi



### 710106 / 710107

Terminal swivel antenna 1/4-wave

Operating system: WiFi, Bluetooth

Frequency: 2400-2485 / 4900-5900MHz

Gain: 2,15 / 3dBi



### 710254

Small terminal antenna 1/4-wave

Operating systems: WiFi, Bluetooth

Frequency: 2400-2485MHz

Gain: 2,15dBi



### 726556 UHF Terminal Antenna

440 – 470 MHz

0 dB gain -Square wave antenna



### 726637 VHF car Antenna

144—300 MHz

0 dB gain



### 731247 UHF Terminal antenna

406 – 428 MHz

0 dB gain -Square wave antenna



### 868/915 Stick Antenna 3dBi

LPWAN antenna, optimal for various technologies.

Supports both 868MHz as well as 915MHz



### 868/915 Stick Antenna 5dBi

LPWAN antenna

Supports both 868MHz as well as 915MHz



### 868/915 Stick Antenna 8dBi

LPWAN antenna

Supports both 868MHz as well as 915MHz



## Smarteq Antenna Products

### ABY7-10/11

Directional high gain antenna, 9dBi  
Frequency: 380-470MHz  
Gain: 9dBi



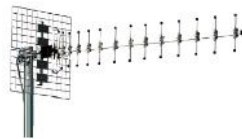
### ABY9-10

Directional high gain antenna  
Frequency: 800-960MHz  
Gain: 10,5dBi



### ACY15

Directional antenna  
Frequency: 800-960MHz  
Gain: 15dBi



### ACY7

Directional high gain antenna  
Frequency: 380-470MHz  
Gain: 10dBi



### AllDisc

Cellular: 698-960MHz, 1710-2690MHz,  
3400-3800MHz  
5G ready, IP6K9K class



### AllDisc 4xWiFi

4 antenna elements  
2400-2500 / 4900-5825 MHz  
IP6K9K class



### AllDisc Combi GNSS

Cellular: 698-960MHz, 1710-2690MHz &  
3400-3800MHz GNSS: 1575-1610MHz  
(GPS: L1, Galileo: E1, Glonass: L1)  
IP6K9K class



### AllDisc Combi GNSS MIMO-WiFi

Cellular: 698-960MHz, 1710-2690MHz  
and 3400-3800MHz 2x WiFi: 2400-  
2485MHz and 4915-5825MHz GNSS:  
1575-1610MHz



### AllDisc Combi GNSS WiFi

Cellular: 698-960 / 1710-2690MHz &  
3400-3800MHz  
5G Ready  
WiFi/BT: 2400-2485MHz and 4915-6000MHz  
GNSS: 1575-1610MHz  
GPS: L1, Galileo: E1, Glonass; L1  
LNA gain 30dB, IP6K9K class



### AllDisc Combi GNSS+ MIMO-WiFi

Cellular: 698-960 / 1710-2690MHz &  
3400-3800MHz  
5G Ready  
WiFi/BT: 2400-2485MHz and 4915-6000MHz  
GNSS: 1559-1610MHz  
GPS, Galileo, Glonass, BeiDou  
LNA gain 30dB with pre-filter, IP6K9K class



## Smarteq Antenna Products

### AllDisc S

Cellular: 698-960MHz, 1710-2690MHz,  
3400-3800MHz  
5G ready, IP6K9K class



### AMR TEQ

Operating system: 2G/3G  
Frequency: 824-960/1710-2170MHz  
Gain: 2,15dBi



### Ant

Combination antenna  
Operating system: 2G/3G+GPS  
option to mount an rod according  
to smarteq rod selection guide 27-600MHz  
Active LNA +26dB



### Base 1123

Robust antenna base  
Rod selection guide 27-1000MHz



### Base 1131

Robust antenna base  
Rod selection guide 27-1000MHz  
1000MHz



### Base 128

Robust antenna base  
Rod selection guide 27-



### Base 2000XL

Particularly well suited for rooftop-mounting  
because of very low internal protrusion and  
ability to be installed exclusively with access  
from the outside



### Base 2500

Particularly well suited for rooftop-mounting  
because of very low internal protrusion and  
ability to be installed exclusively with access  
from the outside  
Rod selection guide 27-2700MHz



### Base NCD

Robust antenna base  
Rod selection guide 27-1000MHz



### DP90

Operating system: 2G/3G  
Frequency: 868-960/1710-2170MHz  
Embedded PCB antenna



## Smarteq Antenna Products

### GNSS HG

Durable design, IP67

Operating system: GPS and Glonass

Frequency: 1574-1609MHz

High LNA gain 28dB

Adhesive mount



### GPS HG

Durable design, IP67

Operating system: GPS

Frequency: 1575,42+1,023MHz

High LNA gain 28dB

Adhesive mount



### K50464 VHF car antenna

62 ... 300 MHz

0 dB Gain

M11 female connector



### K50494 VHF car antenna

64 ... 300 MHz

0 dB Gain

M11 female connector



### K50534 – VHF car antenna

62 ... 300 MHz

0 dB gain

Fixed cable, 5 m, without connector



### K50544 VHF car antenna

62 ... 300 MHz

0 dB gain

Fixed cable RG58, 5 m long, no connector



### K50552031

For Whip 62 ... 470 MHz

Whip K 50 47 40 41 K 50 48 40 41,

K 70 57 21 04 1, K 70 57 23 04 1

Fixed cable, 5 m, without connector



### K5065421 VHF car antenna

74 ... 87,5 MHz tunable

0 dB Gain

Clamping device for cable RG58



### K5065422 VHF car antenna

74 ... 87,5 MHz tunable

0 dB Gain

M11 female connector



### K51164 VHF magnet mount antenna

58 ... 300 MHz

0 dB Gain

Cable RG58, 4 meter, no connector



## Smarteq Antenna Products

### K5139235 VHF Terminal antenna

163 – 174 MHz

0 dB gain -hélix antenna

M male connector



### K705564 2G/3G car antenna

824 – 2170 MHz

0 dB Gain

FME male connector



### K7057219 UHF car antenna

380 ... 430 MHz tunable

2 to 4 dB Gain

fixed cable RG58, 5 m long, no connector



### K705722041 Tetra Antenna Whip

380 ... 410 MHz tunable

4 dB Gain

for base K50552031, K50484031



### K7057239 UHF car antenna

440 ... 470 MHz tunable

4 dB Gain

fixed cable RG58, 5 m long, no connector



### K707721 UHF car antenna

406 – 440 MHz

0 dB Gain

FME male connector



### K707723 UHF car antenna

440 – 470 MHz

0 dB Gain

FME male connector



### K707821 UHF Car Antenna

406 – 440 MHz

4 dB Gain

FME male connector



### K711621 – UHF Magnet mount antenna

410 – 470 MHz

0 dB Gain

Fixed cable RG58, 4 m long with

FME female connector



### K713226 UHF Terminal antenna

400 – 470 MHz

0 dB gain -Square wave antenna

TNC male connector



### K713229 UHF Terminal antenna

400 – 470 MHz

0 dB gain -Square wave antenna

### K7153216 – UHF Terminal antenna

406 – 430 MHz

4 dB gain – Half wave decoupled antenna

## Smarteq Antenna Products

### K713229 UHF Terminal antenna

400 – 470 MHz

0 dB gain -Square wave antenna



### K7153236 – UHF Terminal antenna

440 – 470 MHz

4 dB gain – Half wave decoupled antenna



### K7153216 – UHF Terminal antenna

406 – 430 MHz

4 dB gain – Half wave decoupled antenna



### K7153239 UHF Terminal antenna

440 – 470 MHz

4 dB gain – Half wave decoupled antenna



### LP400

Low profile with rugged design, IP44

Radio system : ISM

Frequency: 433MHZ or 444MHz+1MHz

Gain: 2,15dBi



### LP4487

Dual output 444 + 868 MHz

Low profile, ergonomic style



### LP450

Low profile with rugged design, IP67 when mounted

Radio system: CDMA450

Frequency: 450-470MHz

Gain : 2,15 dBi



### LP70X

Low profile with durable design

Radio system: 2G/3G/4G

Frequency: 698-960/1710-2690MHz

Gain: 1,5 / 2,5dBi



### LP80x

Low profile with durable design

Operating system: 2G/3G/4G

Frequency: 790-960/1710-2690MHz and NB-IoT



### LP868

ISM 868

Frequency: 867-876MHz

Ground-plane independent



### LPA045

Frequency: 410-480 MHz

Gain: 9,5dBi



### LPA922 Directional antenna

Frequency: 698-960/1710-2690MHz

Gain: 11,5dBi , (10@698MHz)





## Smarteq Antenna Products

### LPCA 1

450-470 MHz, Cellular, GNSS

IP67



### LPCA 10

Designed for 380-410 MHz

IP67



### LPCA 2

Tetra 380-410, Cellular, GNSS

IP67



### LPCA 3

410-430 MHz, Cellular, GNSS

IP67



### LPCA 4

CDMA 450, Cellular, GNSS and WiFi

IP67



### LPCA 5

380-410 MHz, Cellular, GPS

Ground plane independent



### LPCA 6

410-430 MHz, Cellular, GNSS, WiFi

Ground plane independent



### LPCA 7

ISM 430-450 MHz, Cellular

Ground plane independent



### LPCA 8

410-430 MHz with an extended range to

450 MHz

Ground plane independent



### LPCA 9

430-450 MHz with an

extended range to 470 MHz

Ground plane independent



### LPCA MIMO

2xMIMO, 2G/3G/4G antenna

Optional GPS/Glonass/Galileo



### LPFM

AM: 0.5-1.7MHz / FM: 87.5-108MHz

Ground plane independent



### LTE Indoor Ceiling Antenna

698-960MHz and 1710-2690MHz



### LTE Omni Antenna

790-960MHz, 1710-2690MHz and 3400-3800MHz

5G ready



## Smarteq Antenna Products

### MaxiMag

27-500MHz (depending on rod)

Magnet mount



### MidiMag

27-1000MHz (depending on rod)

Magnet mount



### MiniBlade Antenna

WiFi, BT, V2X, 5G

2400 – 2485MHz 3400 – 3800MHz

4900 – 5925MHz



### MiniMag

430-470MHz / 790-2690MHz

(depending on rod)



### Miniwing LTE

Operating system: 2G/3G/4G

Frequency: 790-960/1710-2690MHz

Gain: 2dBi



### SmartBlade Antenna

Operating system: 2G/3G/4G/5G

Frequency: 698 – 960 MHz/1420 – 1520MHz /

1710 – 2690 MHz / 3400-3800MHz

Gain: 1,5 – 5,5dBi



### Smartdisc

Operating system: 2G/3G/4G

Frequency: 790-960/1710-2690MHz

Gain: 2,15 dBi / 3,15 dBi



### SmartDisc Bluetooth

Operating system: WiFi, Bluetooth

Frequency: 2400-2485MHz

Gain: 5dBi



### Smartdisc Combi

Operating system: 2G/3G + GPS

Frequency:

Cellular 790-960/1710-2690MHz

GNSS: 1575+1,023MHz

Gain: Cellular: 2,15 / 3,15dBi



### SmartDisc Combi GNSS

Cellular: 790-960MHz and 1710-

2690MHz GNSS : 1575-1610MHz

(GPS: L1, Galileo: E1, Glonass: L1)





## Smarteq Antenna Products

### Smartdisc WiFi

Frequency: 2400-2485/4800-5900MHz  
Gain: 6/7dBi



### Smartwing LTE GNSS

Frequency:  
Cellular 790-960/1710-2690MHz  
GNSS: 1575-1609MHz  
Gain: 2,15dBi



### TRA LTE Antenna

Frequency: 698 – 960/1710-2700MHz



### TRA169

In wall antenna  
Operating system: ISM  
Frequency: 169MHz  
Gain: -5 dBi



### TRA2400

Frequency: 2400 MHz  
Gain: 2,15 dBi



### TRA450

Frequency:430-470MHz  
Gain: -2 dBi



### TRA900

Dual band antenna  
Frequency : 900/1800MHz  
Gain: 1 dBi



### VO450

Frequency: 430-470MHz  
Gain: 3 dBi



### VPD70

Band coverage: 698-960MHz,  
1710-2690MHz and NB-IoT  
Gain: 4,5 dBi / 5,5 dBi



### VPD90

Flexible five band antenna  
850/900/1800/1900/2100 MHz  
Gain: 7dBi / 5dBi



### WiFi Omni antenna

Freq: 2.4 – 2.485 GHz / 4.9 – 5.9 GHz  
Gain: 5.1 dBi / 5 dBi



### WLD-2

Freq: 890 – 960 MHz / 1710 – 2170 MHz  
Gain: 4 dBi / 5 dBi

