

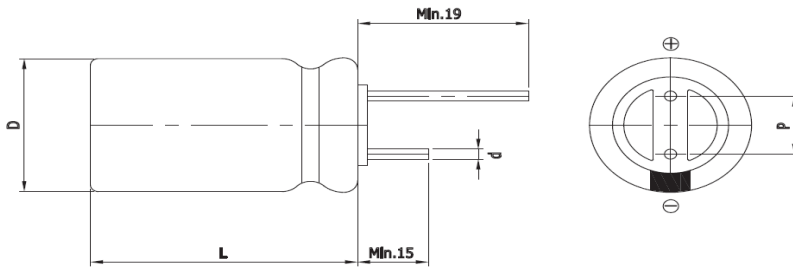
## Features

### EDLC (Electric Double Layer Capacitor)

- High Power Density
- Over 500,000 cycle life (semi-permanent)
- Higher energy density compared with 2.7V caps
- RoHS compliant
- Long-term reliability improved at high temperature and humidity



## Drawing



|        |               |
|--------|---------------|
| D (Φ)  | 12.5 +1.0 Max |
| L (mm) | 20.0 ±1.5     |
| d (Φ)  | 0.6 ±0.1      |
| P (mm) | 5.0 ±0.5      |

## Specification

| Item                       |        | Characteristics  |                              |
|----------------------------|--------|--|------------------------------|
| Product series             |        | EDLC   |                              |
| Rated Voltage ( $V_R$ )    |        | 3.0V   |                              |
| Operating Temperature      |        | -40 ~ +65°C  |                              |
| Capacitance Tolerance      |        | -10 ~ +30%   |                              |
| High Temperature Load Life |        | After 1,000 hours at $V_R$ loaded under +65°C, capacitors meet the following criteria.                                     |                              |
|                            |        | Capacitance Change   | ≤ 30% of initial value       |
|                            |        | ESR  | ≤ 2 times of specified value |
| Cycle Life Characteristics | Cycle  | Over 500,000   |                              |
|                            | ΔC     | ≤ 30% of initial value   |                              |
|                            | ESR    | ≤ 2 times of specified value   |                              |
|                            | Method | Cycle of Charge/discharge from $V_R$ to $1/2V_R$   |                              |
| Shelf Life                 |        | 2 Years<br>No Electrical Charge, Temperature below 70°C<br>(ΔC : ≤ 10% of initial value / ΔESR : ≤ 50% of specified value) |                              |

| Part Number    | Rated Voltage (V) | Capacitance (F) | ESR (mΩ) |    | Max. Current (A) | Leakage Current (mA, 72hr) | Size (mm) |
|----------------|-------------------|-----------------|----------|----|------------------|----------------------------|-----------|
|                |                   |                 | AC(1kHz) | DC |                  |                            | D x L     |
| WEC 3R0 106 QD | 3.0               | 10              | 50       | 75 | 8.5              | 0.030                      | 13 x 20   |

\* Max. Current : 1 sec. discharge to  $1/2V_R$

Version 1.2 2019.02.21.