

# VET1030 \_ 2.7V 10F



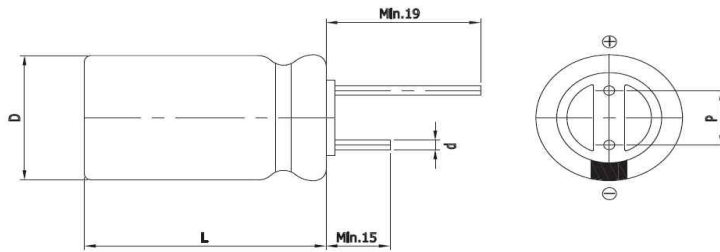
## Features

### VET (Vina EDLC High Temperature)

- Short-term Peak Power assist applications
- Over 500,000 cycle life (semi-permanent)
- Long-term reliability improved at high temperature and humidity
- RoHS compliant
- High Power Density



## Drawing



Size	1030
D (Φ)	10.0 +1.0 Max
L (mm)	30.0 ±1.5
d (Φ)	0.7 ±0.1
P (mm)	5.0 ±0.5

## Specification

Item	Characteristics	
Rated Voltage (V <sub>R</sub> )	2.7V	
Operating Temperature	-40 ~ +85°C	
Capacitance Tolerance	-10 ~ +30%	
High Temperature & High Humidity Load Life	After 1,000 hours at V <sub>R</sub> loaded under +85°C, 85%RH Humidity, capacitors meet the following criteria.	
	Capacitance Change	≤ 30% of initial value
	ESR	≤ 3 times of specified value
Cycle Life Characteristics	Cycle	Over 500,000
	ΔC	≤ 30% of initial value
	ESR	≤ 3 times of specified value
	Method	Cycle of Charge/discharge from V <sub>R</sub> to 1/2V <sub>R</sub>
Shelf Life	2 Years No Electrical Charge, Temperature below 70°C (ΔC : ≤ 10% of initial value / ΔESR : ≤ 50% of specified value)	

Part Number	Rated Voltage (V)	Rated Capacitance (F)	ESR <sub>AC</sub> (mΩ)	ESR <sub>DC</sub> (mΩ)	Max Current (A)	Leakage Current (mA)	Weight (g)
VET2R7106QG	2.7 Surge Voltage (3.0V)	10 @ 25°C	50 @ 25°C 1kHz	75 @ 25°C 10msec	7.5 @ 25°C	0.030 @ 25°C 72hr	3.2±0.2

\* Max. Current : 1 sec. discharge to 1/2V<sub>R</sub>

\* Note: The products are tested based on the test conditions and methods defined in AEC-Q200