

## Spirafix™ Anchors for Field Shelters



Using Spirafix™ ground anchors for field shelters is easy!

1. Look up the size of field shelter in the table below.
2. Decide whether the location of the shelter is exposed to the wind, i.e. away from hedges, fences, trees, buildings etc. that would protect it.
3. Finally select the row that matches whether your shelter has a canopy (overhang) at the front.

If your selection shows two different lengths of anchor then the short ones must be installed at the rear of the shelter and the longer ones at the front. Where shelters have more than one opening or door, then one anchor must be used between each of the doors.

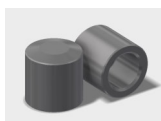


These anchors must be used with one of our through slot brackets (see SA238 for a typical bracket). They are fitted to the bottom edge of the shelter using M10 coach screws. Alternatively, if the base is steel then we can supply a bracket that can be welded onto the base. Please enquire for further details.

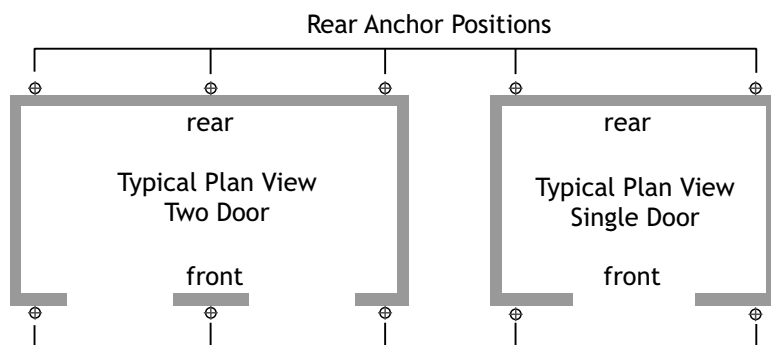
Once the brackets are fitted to the shelter then place the end of the anchor through the slot and drive it in using a short handled sledge hammer. The anchors can be removed by unscrewing them with a 29mm socket or spanner.



SA238 - 50mm  
5 Hole Through  
Slot Bracket



SA493 - 50mm Manual  
Protective Hammer Cap  
Recommended if anchors  
are to be removed and  
re-installed frequently.



Size of Shelter	Sheltered	Overhang	Front Spirafix™	Rear Spirafix™
3m wide up to 5.5m long single door	yes	no	2 x SF50-08-0490C	2 x SF50-08-0490C
3m wide up to 5.5m long single door	yes	yes	2 x SF50-08-0630C	2 x SF50-08-0490C
3m wide up to 5.5m long single door	no	no	2 x SF50-08-0630C	2 x SF50-08-0630C
3m wide up to 5.5m long single door	no	yes	2 x SF50-10-0840C	2 x SF50-08-0630C
3m wide 5.5m to 8.0m long two door	yes	no	3 x SF50-08-0490C	3 x SF50-08-0490C
3m wide 5.5m to 8.0m long two door	yes	yes	3 x SF50-08-0630C	3 x SF50-08-0490C
3m wide 5.5m to 8.0m long two door	no	no	3 x SF50-08-0630C	3 x SF50-08-0630C
3m wide 5.5m to 8.0m long two door	no	yes	3 x SF50-10-0840C	3 x SF50-10-0840C
3m wide 8.0m to 12.0m long three door	yes	no	4 x SF50-08-0490C	4 x SF50-08-0490C
3m wide 8.0m to 12.0m long three door	yes	yes	4 x SF50-08-0630C	4 x SF50-08-0490C
3m wide 8.0m to 12.0m long three door	no	no	4 x SF50-08-0630C	4 x SF50-08-0630C
3m wide 8.0m to 12.0m long three door	no	yes	4 x SF50-10-0840C	4 x SF50-08-0630C
4m wide 12.0m to 18.0m long four door	yes	no	5 x SF50-08-0630C	5 x SF50-08-0630C
4m wide 12.0m to 18.0m long four door	yes	yes	5 x SF50-10-0840C	5 x SF50-08-0630C
4m wide 12.0m to 18.0m long four door	no	no	5 x SF50-10-0840C	5 x SF50-10-0840C
4m wide 12.0m to 18.0m long four door	no	yes	5 x SF50-10-1050C	5 x SF50-10-0840C