



“THE MINIMUM,
AT TIMES INDISPENSABLE”

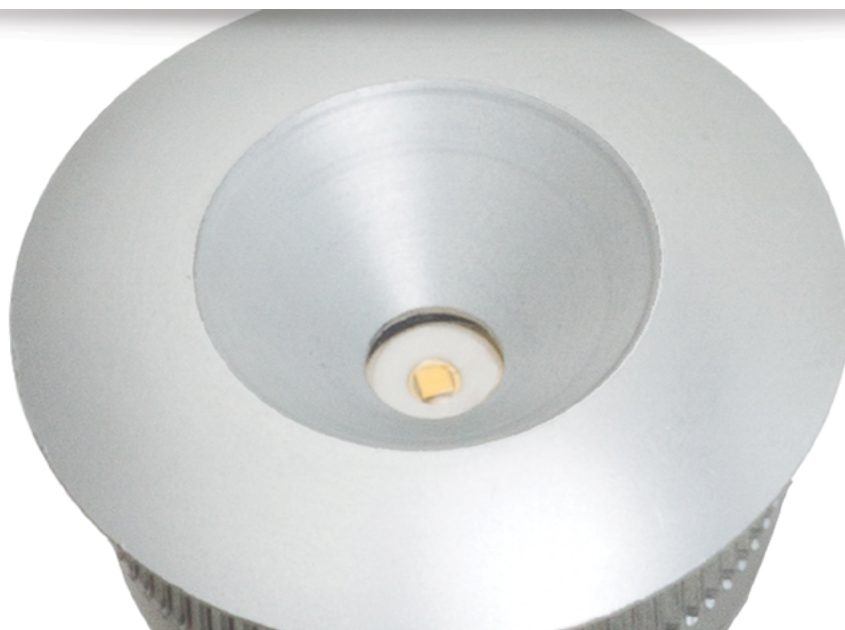


APPLICATIONS

The ideal pin-light for the diffused lighting of niches for item display or for lighting suspended work surfaces from below. The small thickness means it can be installed into shelves and surfaces, and the reduced emission of heat prevents ageing of the material in which it is installed.

DESCRIPTION

Body in anodized aluminium. Electrical connection with flying wires. High power LED module on printed circuit board with metal base. Electronic components, dimmable with external dimmer. IP20 protection rating: protection against solid particles of dimensions greater than 12mm and not protected against liquids.



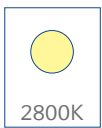
CHARACTERISTICS AND ADVANTAGES

- High efficiency (>100 lm/W).
- ANSI compliant binning.
- Excellent lumen maintenance and colour stability.
- Extensive dimming range – fully dimmable.
- Highly efficient secondary optics.
- Long life and reduced maintenance costs.
- Ecological, no disposal restrictions.

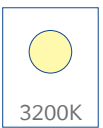
OPTICS, COLOUR TEMPERATURE AND CRI



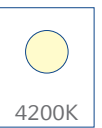
120°



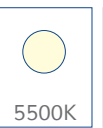
2800K



3200K

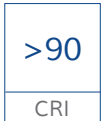


4200K



5500K

OTHER COLOURS ON REQUEST



>90

CRI



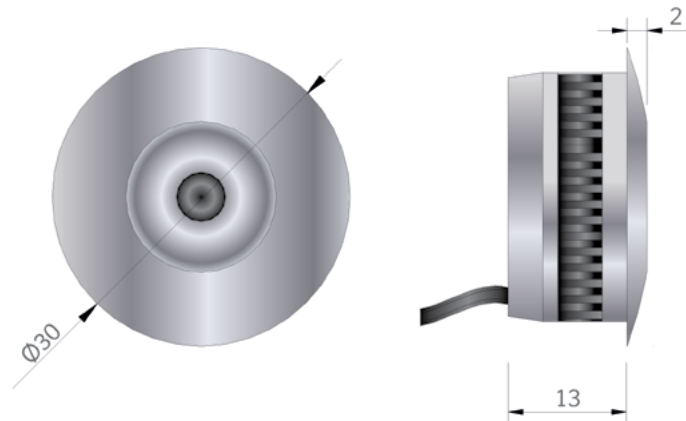
>85

CRI

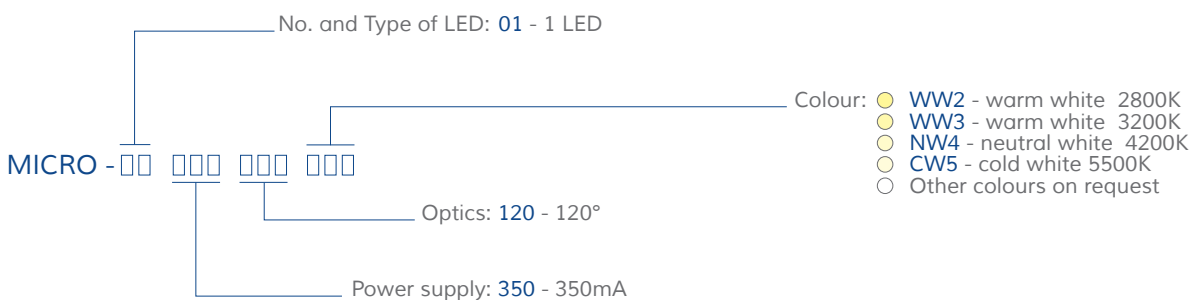
TECHNICAL FEATURES

No and Type of LED	1 x CREE XP-E
Power supply	350mA
Body material	anticorodal anodized aluminium
Electrical connection	flying
Cooling	passive
Installation	any position
Protection rating	IP20
Class	III
Weight	0,03Kg
Dimensions	Ø30 x h15mm
Mounting hole	Ø25mm
Depth	12mm
Maximum power consumption	1,2W
Operating temperature	-40 / +85°C
Average product life	35.000hours

TECHNICAL DRAWING



CODING



- Note: not all combinations of the characteristics are possible