



Bluewave Guardian Yagi Antennas

PCTEL's Bluewave Guardian series has been engineered to provide high gain broadband performance. Solid 3/8" aluminum elements complement the fully welded dipole on the boom. The black powder coat BGYD890M comes with an integral low loss 2' RG213 feed line with a standard N Female connector. High strength mounting clamp is supplied for vertical or horizontal polarization.



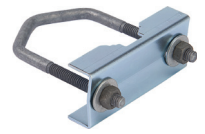
BGYD450K

Features

- Dipole fully-welded to boom
- Black powder coated aluminum
- Mounting clamp included
- Antenna is supplied with a 2' pigtail (RG213) and N Female connector
- Elements and boom are crafted from high strength 6061-T6 aluminum
- Wind rated > 150 mph
- Temperature range -40°C to +85°C



BWC1001 mount



SA-WC1022 mount

STANDARD CONFIGURATION

Model	Cable	Connector	Elements	Mount
BGYD450K	2 ft RG213	N Female	7	BWC1001
BGYD806K	2 ft RG213	N Female	7	SA-WC1022
BGYD890G	2 ft RG213	N Female	3	SA-WC1022
BGYD890K	2 ft RG213	N Female	7	SA-WC1022
BGYD890M	2 ft RG213	N Female	11	SA-WC1022

ELECTRICAL SPECIFICATIONS - RF ANTENNA

Model	Frequency Range	Gain	Azimuth Half Power Beamwidth	Elevation Half Power Beamwidth	Front to Back Ratio	Maximum Power	Nominal Impedance
BGYD450K	450-470 MHz	10 dBd	0°	45°	20 dB	250 watts	50 ohms
BGYD806K	806-896 MHz	10 dBd	60°	46°	20 dB	200 watts	50 ohms
BGYD890G	890-960 MHz	6.5 dBd	110°	62°	15 dB	200 watts	50 ohms
BGYD890K	890-960 MHz	10 dBd	56°	46°	20 dB	200 watts	50 ohms
BGYD890M	890-960 MHz	12 dBd	40°	34°	20 dB	200 watts	50 ohms

MECHANICAL & ENVIRONMENTAL SPECIFICATIONS

Model	Dimensions*	Lateral Thrust @ 100 mph	Lateral Thrust @ 100 mph with 1/2" of Ice	Bending Moment @ 100 mph	Weight	Cross Sectional Area
BGYD450K	42" x 13" x 3.2"	16.72 lb	48.49 lb	25.4 lb-ft	2.5 lbs (1.13 kg)	0.43 sq ft
BGYD806K	24" x 6.5" x 2.5"	7.67 lb	24.86 lb	6.53 lb-ft	2 lbs (0.91 kg)	0.20 sq ft
BGYD890G	12" x 7.3" x 2.5"	3.68 lb	9.79 lb	1.0 lb-ft	1.5 lbs (0.68 kg)	0.08 sq ft
BGYD890K	23.8" x 6.4" x 2.5"	7.53 lb	24.4 lb	6.35 lb-ft	2 lbs (0.91 kg)	0.20 sq ft
BGYD890M	36" x 6.8" x 2.5"	11.86 lb	36.99 lb	15.8 lb-ft	2.5 lbs (1.13 kg)	0.31 sq ft

* Dimension do not include antenna cable.