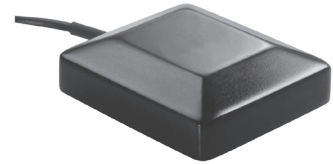




GNSS26GMMMSMA Glass Mount Antenna with SkyLink™ High Rejection GNSS Technology

The GNSS26GMMMSMA glass mount is GNSS antenna utilizes an electrically shielded LNA PCB assembly and ceramic filter designed to provide proprietary SkyLink™ high out-of-band rejection for optimal integration in congested RF installations. The assembly is permanently encased in a compact, UV-stable radome, making it ideal for concealed vehicle tracking applications.



GNSS26GMMMSMA

Features

- GPS L1 & GLONASS L1 Frequencies
- Proprietary SkyLink™ filtering design allows wideband coverage while achieving superior out-of-band rejection for all GNSS frequencies
- High bond tape for vehicle windshield glass installation
- Rugged, low-profile housing for minimum visibility
- 26 dB gain
- ESD protection

STANDARD CONFIGURATION

Model	Cable	Connector	Mount
GNSS26GMMMSMA	17 feet RG-174/U	Male SMA (attached)	High Bond tape for glass mounting

ELECTRICAL SPECIFICATIONS - GNSS ANTENNA

Frequency Band	LNA Gain	Element Gain	Polarization	Out of Band Rejection	VSWR
1565-1610 MHz	@ 3.0VDC: 26dB (typical)	2 dBic @ 90°	Right hand circular	f0 = 1586 MHz f0 +/- 50MHz : ≥ 60dBc f0 +/- 60MHz : ≥ 70dBc	2.0:1 maximum

ELECTRICAL SPECIFICATIONS - GNSS ANTENNA, continued

Current Draw	DC Voltage	Noise Figure	Nominal Impedance
< 25 mA (typical)	2.8-6.0 V (operating) ≤ 12.0 V (survivability)	< 2.0 dB (typical)	50 ohms

MECHANICAL & ENVIRONMENTAL SPECIFICATIONS

Dimensions	Weight	Housing Material	Temperature Range	Humidity	High Bond Tape Specifications
2.22 L x 1.97 w x .59 in (56.2 x 50 x 14.9 mm)	25 grams	Black, UV-stable plastic	-40°C to +85°C	95%	Conformable foam Acrylic adhesive Moisture and Solvent resistant High Shear and peel adhesion