



# ULTIMA+



ULTIMA+ not only offers a finely textured and durable surface with a brighter “blue-white” colour and high light reflectance, it also offers a balance of both sound absorption and sound attenuation as well as being C2C Bronze certified.

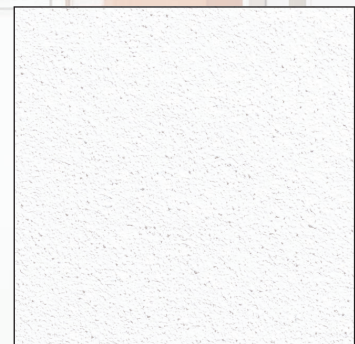
### Key features

- Good sound absorption: up to 0.75 (H)  $\alpha_w$
- Very high light reflectance: 87%
- Reinforced scratch resistant face
- Better finish and more durable edges
- C2C Bronze certified / ISO 5 / A+
- 30 year system guarantee
- Available with SL2 MicroLook 90 edge detail

### Application areas

Ideal for meeting rooms or waiting areas  
ULTIMA+ Planks: ideal for both open areas and corridors.

OFFICE – Woningbouwvereniging Compagn (NL)  
ULTIMA+ Vector



EDGE DETAIL	BOARD	TEGULAR	MICROLOOK 90	VECTOR	SL2								
<b>THICKNESS (mm)</b>	<b>19</b>	<b>19</b>	<b>19</b>	<b>19</b>	<b>19</b>								
<b>MODULES (mm)</b>	600 x 600 ..... 7661M 675 x 675 ..... 7662M 1200 x 600 ..... 7663M	600 x 600 ..... 7664M 675 x 675 ..... 7665M 1200 x 600 ..... 7666M	500 x 500 ..... 7673M 600 x 550 ..... 7713M 600 x 600 ..... 7674M 675 x 675 ..... 7675M 1200 x 300 ..... 7676M 1200 x 600 ..... 7677M 1500 x 600 ..... 7703M	600 x 600 ..... 7681M	1500 x 300 ..... 7699M 1720 x 300 ..... 7700M 1800 x 300 ..... 7701M 2500 x 300 ..... 7702M								
<b>SUSPENSION SYSTEMS</b>	Prelude 24 XL <sup>2</sup> / TLS Prelude 24 Sixty <sup>2</sup> XL <sup>2</sup> / TLS	Prelude 24 XL <sup>2</sup> / TLS Prelude 24 Sixty <sup>2</sup> XL <sup>2</sup> / TLS	Prelude 15 TL / XL <sup>2</sup> Interlude HRC XL <sup>2</sup> Silhouette 6mm XL <sup>2</sup>	Prelude 24 XL <sup>2</sup> / TLS Prelude 24 Sixty <sup>2</sup> XL <sup>2</sup> / TLS	System Z - T-Bar System Z - Z-Bar System Z Corridor - T-Bar System Z Corridor - Z-Bar								
<b>COLOURS</b>	 Global White												
<b>SUSTAINABILITY</b>													
	<sup>1</sup> Depends on thickness, edge detail and size of tile. <sup>2</sup> Except Vector: A												
<b>ACOUSTICS</b>	 EN ISO 10848-2 & EN ISO 717-1    EN ISO 140-3 & EN ISO 717-1    EN ISO 354 & EN ISO 11654												
	<b>Hz <math>\alpha_p</math></b>												
		<b>D<sub>nfw</sub></b>	<b>R<sub>w</sub></b>	<b><math>\alpha_w</math></b>	<b>Class</b>	<b>NRC</b>	<b>125</b>	<b>250</b>	<b>500</b>	<b>1000</b>	<b>2000</b>	<b>4000</b>	
• Board, Tegular, MicroLook 90		<b>36 dB</b>	<b>18 dB</b>	<b>0.70(H)</b>	C	0.75	0.40	0.50	0.65	0.85	0.95	1.00	
• Vector		<b>33 dB</b>	-	<b>0.75(H)</b>	C	0.75	0.35	0.55	0.65	0.80	0.95	0.90	
• SL2		<b>40 dB</b>	-	<b>0.65(H)</b>	C	0.65	0.35	0.45	0.55	0.75	0.90	1.00	
<b>FIRE REACTION</b>		EEA Euroclass A2-s1, d0 EN 13501-1				RUS KM1 (G1, V1, D1, T1) FZ 123							
<b>OTHER PERFORMANCES &amp; FEATURES</b>	87%	95% RH	ISO 5 ISO 14644-1					30 YEAR system guarantee		BIM READY			
	$\lambda = 0.052 \text{ W/m K}$ EN 12667 & ISO 8301	5.0 kg/m <sup>2</sup> (Board, Tegular, MicroLook 90) 5.6 kg/m <sup>2</sup> (SL2) 5.8 kg/m <sup>2</sup> (Vector)											
<b>CUSTOM OPTIONS</b>	 Dimensions												