

EXTRACT FAN SCHEDULE						
REF	DESCRIPTION	MANUFACTURER/MODEL	OUTPUT	SPEED	AMPS	VOLTS Hz PHASE
N/A	BASEMENT EXTRACT FAN (EXISTING)	NICOTRA DDM717E6G304	0.3KW	1260 RPM	2.4	230V 50 Hz 1
EF-01	RETURN AIR EXTRACT FAN (NEW)	SYSTEMAIRE PRIO 355EC/MPT10, 10K SPEED CONTROL	1.16 M3/S @100 PA			230V 60 Hz 1
EF-02	FOOD EXTRACT FAN (NEW)	TBC				

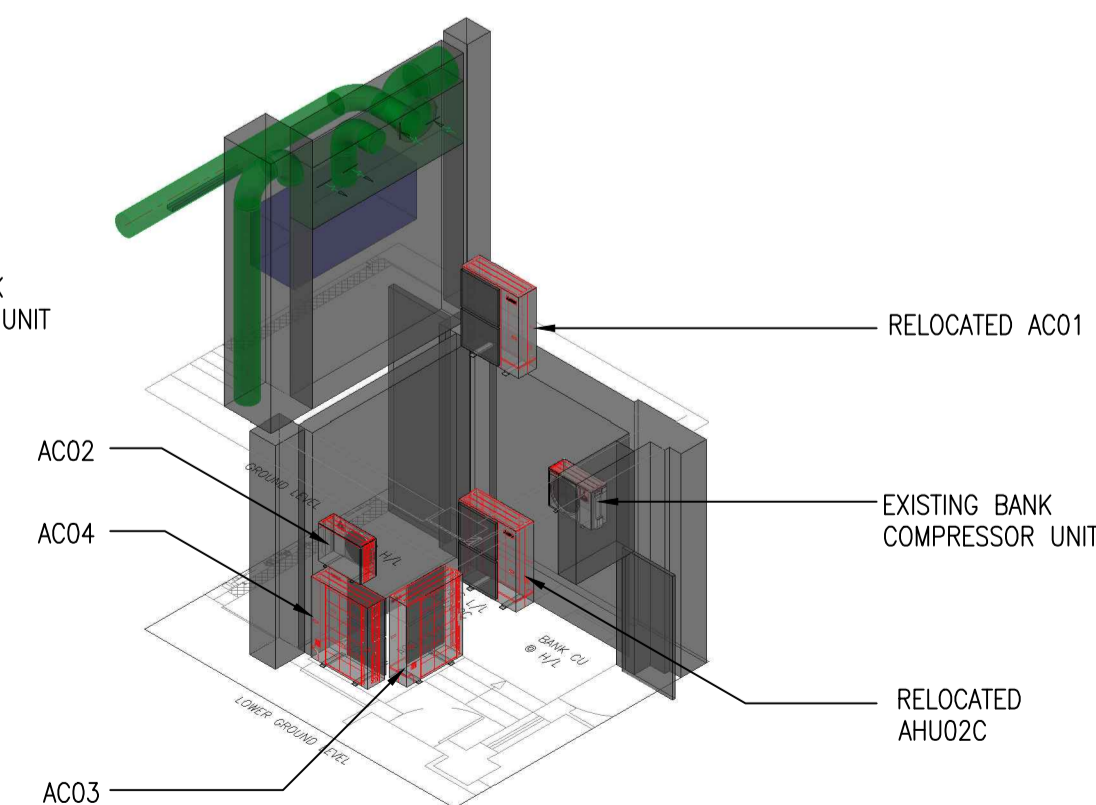
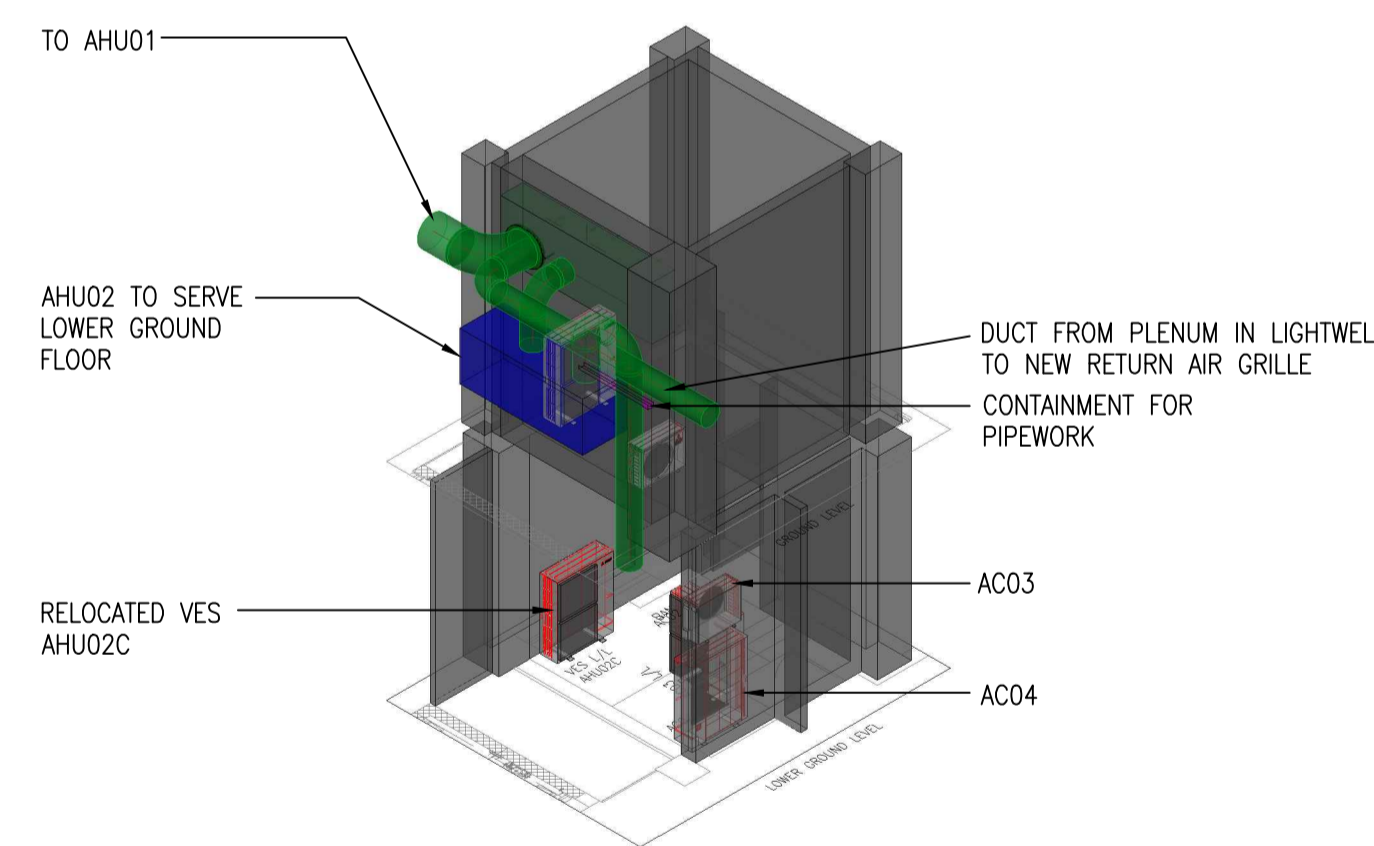
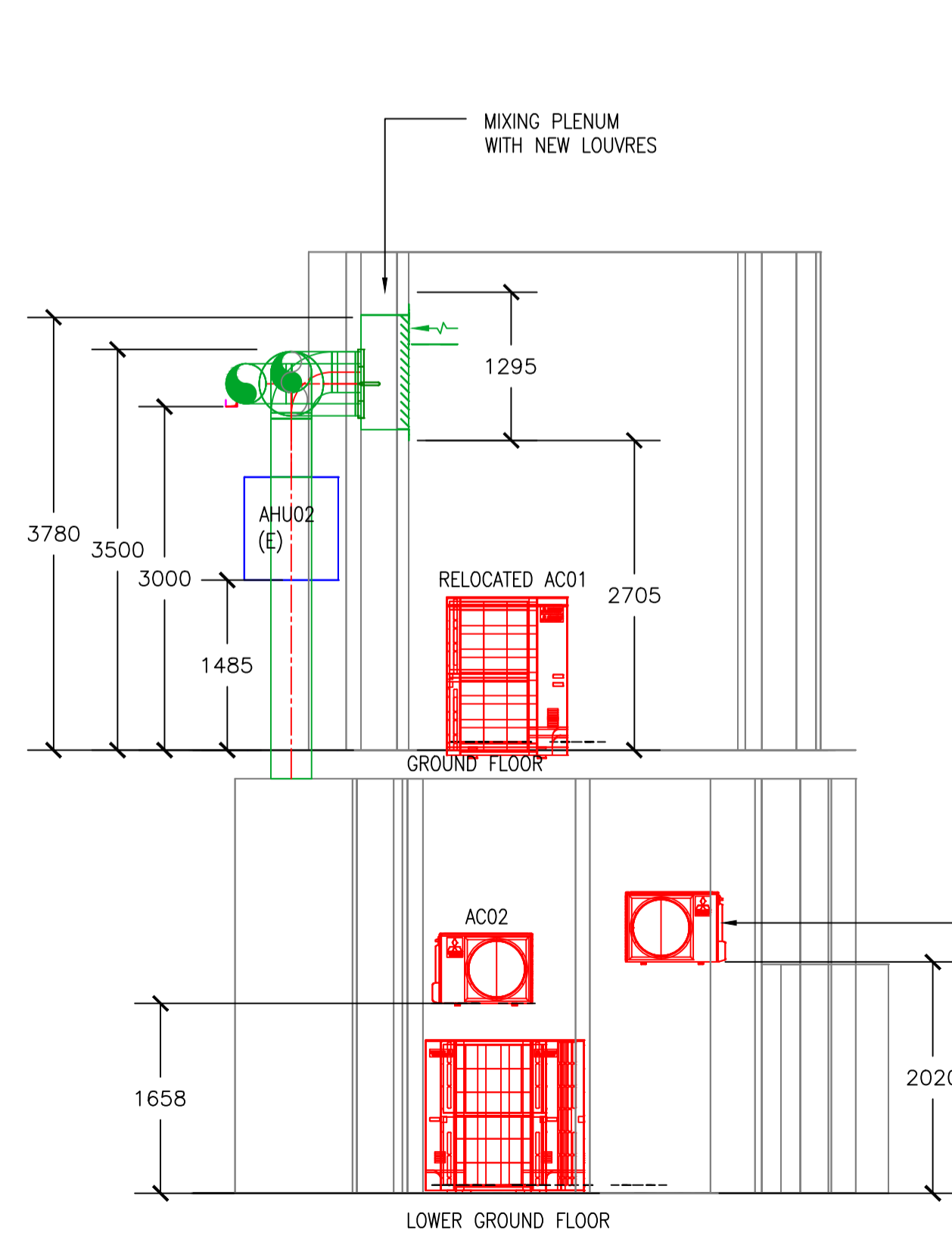
AIR HANDLER SCHEDULE						
AHU	MANUFACTURER	MODEL SPECIAL	SERIAL NUMBER - EXB0038	EXISTING	OUTPUT	PHASE
AHU01	LINCOLN AIR PRODUCTS	MAX/E/2-P/S		EXISTING	1.202 M3/S @180 PA	400V 3PH
AHU02	VES	PZQ140B8W1B		EXISTING	1.102KW POWER UNIT	400V 3PH 50Hz
AHU02C	VES CONDENSER			EXISTING		400V 3OH 50Hz

A/C SCHEDULE						
REF	INDOOR MODEL	QTY	OUTDOOR CONDENSER	QTY	ELECTRICAL	NOTES
AC01	PUHZ-P140VHA3	1NO	PLA-RP140BA2	1NO	230V 50Hz 1PH	EXISTING
AC02	PLA-ZM50EA	1NO	PUZ-ZM50VKA	1NO	220-240V 50Hz 1PH	NEW
AC03	PLA-ZM71EA	2NO	PUZ-ZM140VKA	1NO	220-240V 50Hz 1PH	NEW
AC04	PLA-ZM100EA	1NO	PUZ-ZM100VKA	1NO	220-240V 50Hz 1PH	NEW

UNIT HEATER SCHEDULE					
REF	MANUFACTURER	MODEL	VOLUME	DIMENSIONS	ELECTRICAL
UH-01	DIFFUSION	SRE 6KW	400 l/s	802(L) X 710(W) X 275(D)	230V/1PH/50Hz
UH-02	EXISTING - RECOMMISSION AND LINK TO BMS				
UH-03	EXISTING - RECOMMISSION AND LINK TO BMS				
UH-04	EXISTING - RECOMMISSION AND LINK TO BMS				
UH-05	EXISTING - RECOMMISSION AND LINK TO BMS				

OVERHEAD DOOR SCHEDULE							
REF	MANUFACTURER	MODEL	KW	VOLUME	DIMENSIONS	ELECTRICAL	
ODH01	DIFFUSION	MIRAGE 1800E	(12/18 KW)	MK2	0.60/0.75 M3/S	1800(L) X 600(W) X 255(D)	415V/3PH/50Hz
ODH02	DIFFUSION	MIRAGE 1800E	(12/18 KW)	MK2	0.60/0.75 M3/S	1800(L) X 600(W) X 255(D)	415V/3PH/50Hz
ODH03	DIFFUSION	MIRAGE 1800E	(12/18 KW)	MK2	0.60/0.75 M3/S	1800(L) X 600(W) X 255(D)	415V/3PH/50Hz

GRILLE SCHEDULE		
REF	VOLUME	DESCRIPTION
SG01	45 L/S	SUPPLY AIR LUXURY DIFFUSER SERIES CD HVC
SG02	45 L/S	SUPPLY AIR LUXURY DIFFUSER SERIES CD HVC
SG03	45 L/S	SUPPLY AIR LUXURY DIFFUSER SERIES CD HVC
SG04	45 L/S	SUPPLY AIR LUXURY DIFFUSER SERIES CD HVC
SG05	45 L/S	SUPPLY AIR LUXURY DIFFUSER SERIES CD HVC
SG06	45 L/S	SUPPLY AIR LUXURY DIFFUSER SERIES CD HVC
SG07	45 L/S	SUPPLY AIR LUXURY DIFFUSER SERIES CD HVC
SG08	45 L/S	SUPPLY AIR LUXURY DIFFUSER SERIES CD HVC
RG01	90 L/S	RETURN AIR LUXURY DIFFUSER SERIES CD HVC
RG02	90 L/S	RETURN AIR LUXURY DIFFUSER SERIES CD HVC
RG03	90 L/S	RETURN AIR LUXURY DIFFUSER SERIES CD HVC
RG04	90 L/S	RETURN AIR LUXURY DIFFUSER SERIES CD HVC



PUZ-ZM - OUTDOOR UNITS	AC02				AC04		AC03
	PUZ-ZM35VKA	PUZ-ZM50VKA	PUZ-ZM60VKA	PUZ-ZM71VKA	PUZ-ZM100VKA	PUZ-ZM125VKA	PUZ-ZM140VKA
SOUND PRESSURE LEVEL (dBA) Heating/Cooling	46 / 44	46 / 44	49 / 47	49 / 47	51 / 49	52 / 50	52 / 50
SOUND POWER LEVEL (dBA) Cooling	65	65	67	67	69	70	70
WEIGHT (kg)	46	46	70	70	116	116	118
DIMENSIONS (mm) Width x Depth x Height	809 x 300 x 630	809 x 300 x 630	950 x 300 + 25 x 943	950 x 300 + 25 x 943	1050 x 330 + 40 x 1338	1050 x 330 + 40 x 1338	1050 x 330 + 40 x 1338
ELECTRICAL SUPPLY	220-240v, 50Hz	220-240v, 50Hz	220-240v, 50Hz	220-240v, 50Hz	220-240v, 50Hz	220-240v, 50Hz	220-240v, 50Hz
PHASE	Single	Single	Single	Single	Single	Single	Single
SYSTEM POWER INPUT (kW) Heating/Cooling (nominal)	0.820 / 0.705	1.383 / 1.106	1.707 / 1.452	1.818 / 1.651	2.694 / 2.065	3.674 / 3.378	4.312 / 3.772
HEATING/Cooling (L/K)	0.73 / 0.59	1.21 / 0.94	1.43 / 1.15	1.61 / 1.39	2.09 / 1.77	3.27 / 2.87	3.83 / 3.15
STARTING CURRENT (A)	5.0	5.0	6.0	6.0	13.0	13.0	13.0
SYSTEM RUNNING CURRENT (A) Heating/Cooling [MAX]	3.89 / 3.51 [13.2]	6.05 / 5.00 [13.2]	7.39 / 6.31 [19.2]	7.79 / 7.06 [19.3]	11.25 / 8.97 [27.0]	15.77 / 14.53 [27.0]	18.41 / 15.88 [28.7]
FUSE RATING (BS88) - HRC (A)	16	16	25	25	32	32	40
MAINS CABLE NO. CORES	3	3	3	3	3	3	3
MAX PIPE LENGTH (m)	50	50	55	55	100	100	100
MAX HEIGHT DIFFERENCE (m)	30	30	30	30	30	30	30
CHARGE REFRIGERANT (kg) / CO ₂ EQUIVALENT (t)	R32 (GWP 675) - 30m	2.0 / 1.35	2.00 / 1.35	2.80 / 1.89	2.80 / 1.89	4.00 / 2.70	4.00 / 2.70
MAX ADDITIONAL REFRIGERANT (kg) / CO ₂ EQUIVALENT (t)	R32 (GWP 675)	0.30 / 0.20	0.30 / 0.20	0.80 / 0.54	0.80 / 0.54	2.80 / 1.89	2.80 / 1.89

THE SERVICES INSTALLING CONTRACTOR IS TO BE AWARE THAT HE IS FULLY RESPONSIBLE FOR THE DESIGN OF ALL SERVICES SUPPORTS, BRACKETS & FIXINGS FOR ALL ELEMENTS OF THE INSTALLATION. THIS TO INCLUDE SELECTION OF APPROPRIATE BRACKETS / FIXING ETC TO SUIT THE VARIOUS BUILDING FABRIC MATERIALS. IF NECESSARY THE CONTRACTOR TO OBTAIN APPROVAL OF ALL FIXINGS / BRACKETS FROM THE STRUCTURAL ENGINEER.

SAFETY, HEALTH & ENVIRONMENTAL INFORMATION

IT IS ASSUMED THAT ALL ORKS WILL BE UNDERTAKEN BY A COMPETENT CONTRACTOR USING AN APPROVED METHOD STATEMENT. IN ADDITION TO THE HAZARDS / RISKS NORMALLY ASSOCIATED WITH THE TYPE OF ORKS DETAILED ON THIS DRAWING, PLEASE NOTE THE FOLLOWING ASPECTS:

INSTALLATION RISKS
THERE MAYBE ASBESTOS PRESENT IN BUILDING. REFER TO ASBESTOS SURVEY BEFORE UNDERTAKING ANY ORK.

OPERATION RISKS
THERE MAYBE ASBESTOS PRESENT IN BUILDING. REFER TO ASBESTOS SURVEY BEFORE UNDERTAKING ANY ORK.

MAINTENANCE RISKS
THERE MAYBE ASBESTOS PRESENT IN BUILDING. REFER TO ASBESTOS SURVEY BEFORE UNDERTAKING ANY ORK.

DEMOLITION / MODIFICATION RISKS
THERE MAYBE ASBESTOS PRESENT IN BUILDING. REFER TO ASBESTOS SURVEY BEFORE UNDERTAKING ANY ORK.