

HIGH ON...

REVIEW OF ARCHITECTURE + ART + DESIGN + FASHION + LIFESTYLE

DESIGN ICONIC
DESIGNS OF ALL TIME...
INTERVIEW SPHORA
ARCHITECTS: CLOSER
TO YOU THAN EVER
AGENDA BRUGES
TRIENNIAL 2018 LIQUID
CITY **INTERIOR** EL
CALIFA **ARCHITECTURE**
AMPHITHEATRE COGECO,
HOUSING COMPLEX IN
HANOVER **CATALOGUE...**



PRINT YOUR CITY, DERIN DESIGN
ADORNS WORKING SPACES, "ACCESS +
ABILITY" EXHIBITION BY COOPER HEWITT,
SIMPLE AND PEOPLE ORIENTED DESIGNS
AT ZIVELLA, UTOPIA, SLEEPING WITH
NATURE, ACHILLE CASTIGLIONI, M89
HOTEL, CENTRO BOTIN, LOFT IN DUANE
STREET, BLAIBACH CONCERT HALL...

Nº.001
JAN. 2019
€ 6

by TASARIM
GROUP

212262-2018/01
106
ISSN 1300-7351
9 771300 735008

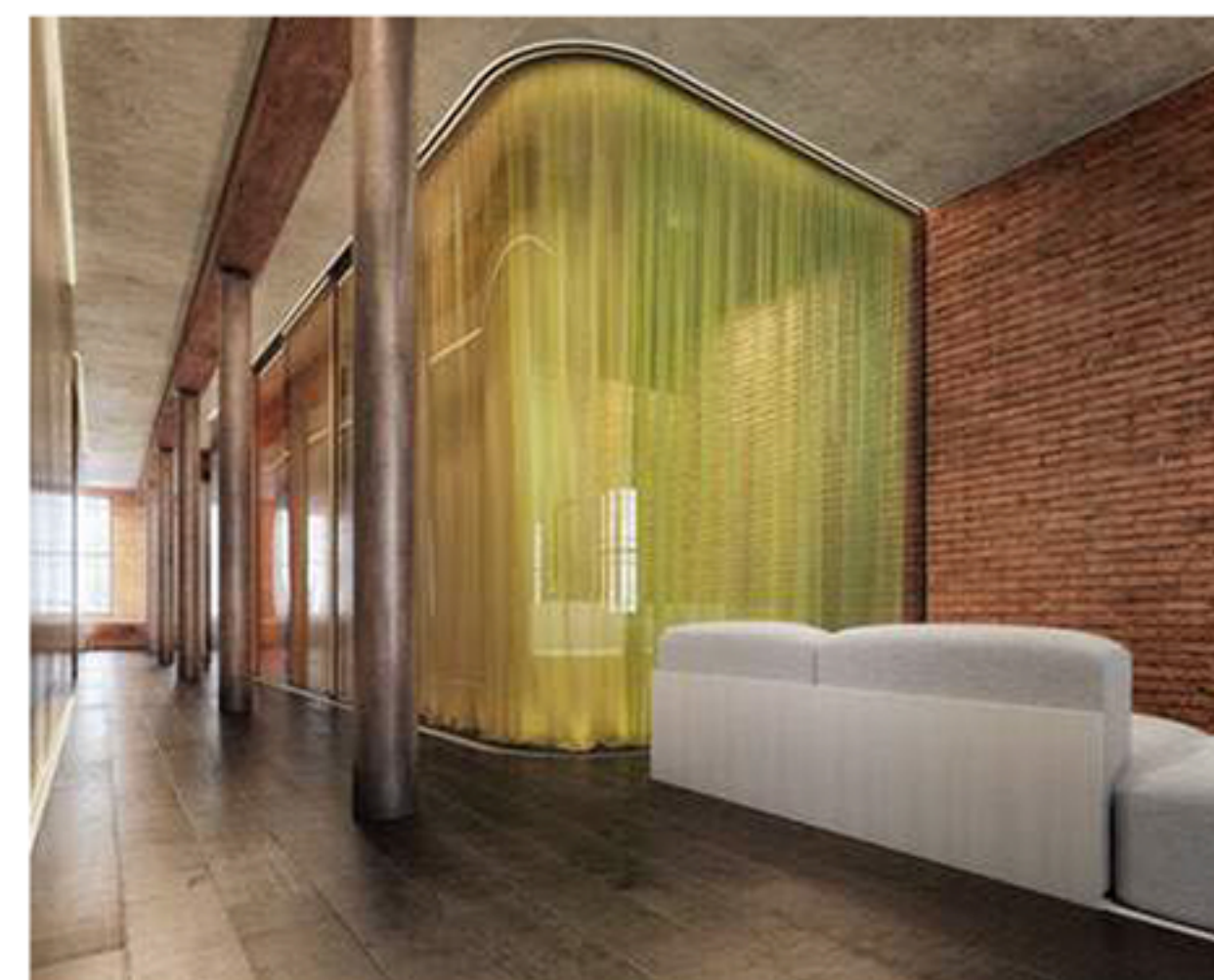
BLAIBACH
CONCERT HALL
> 60

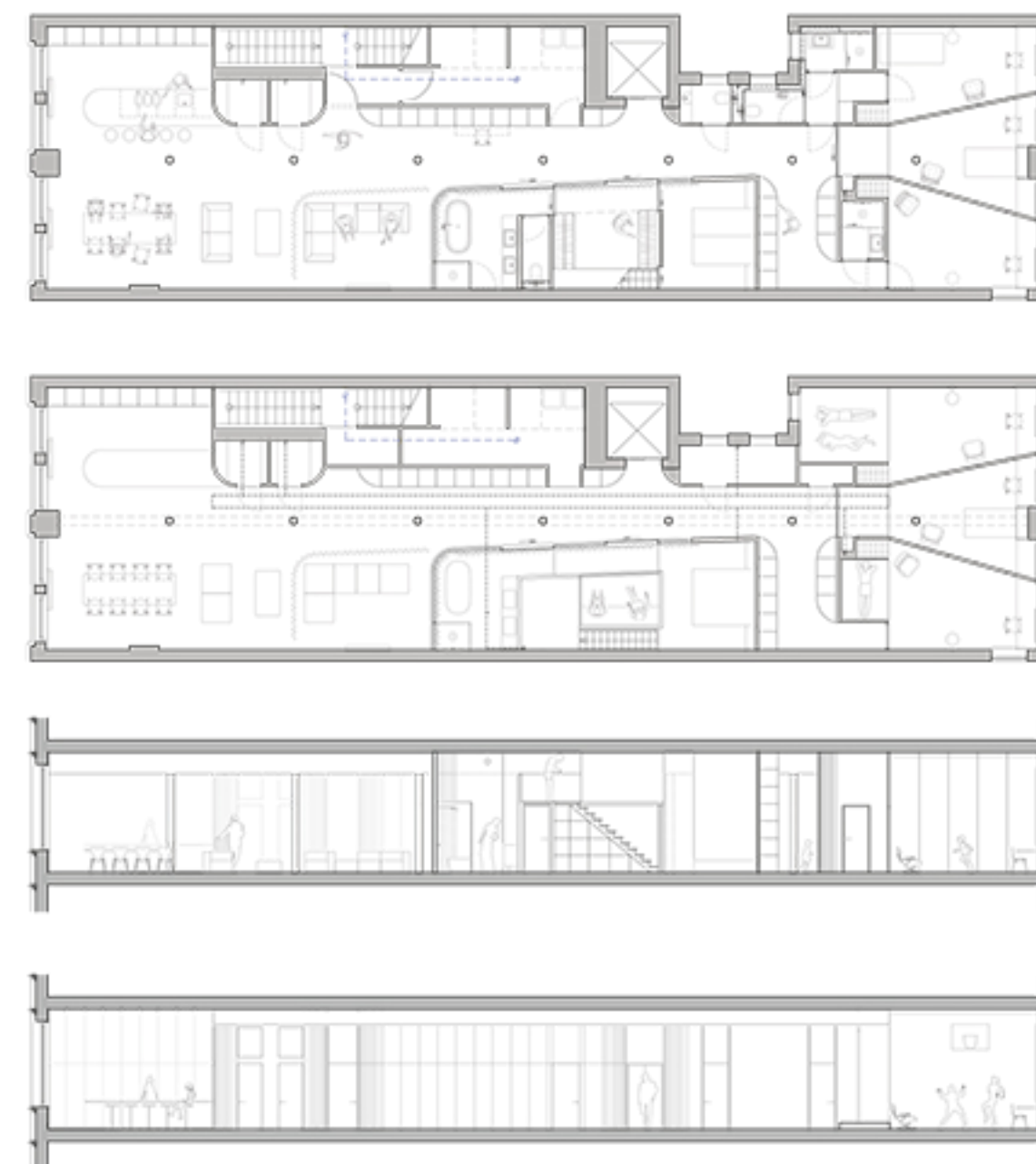
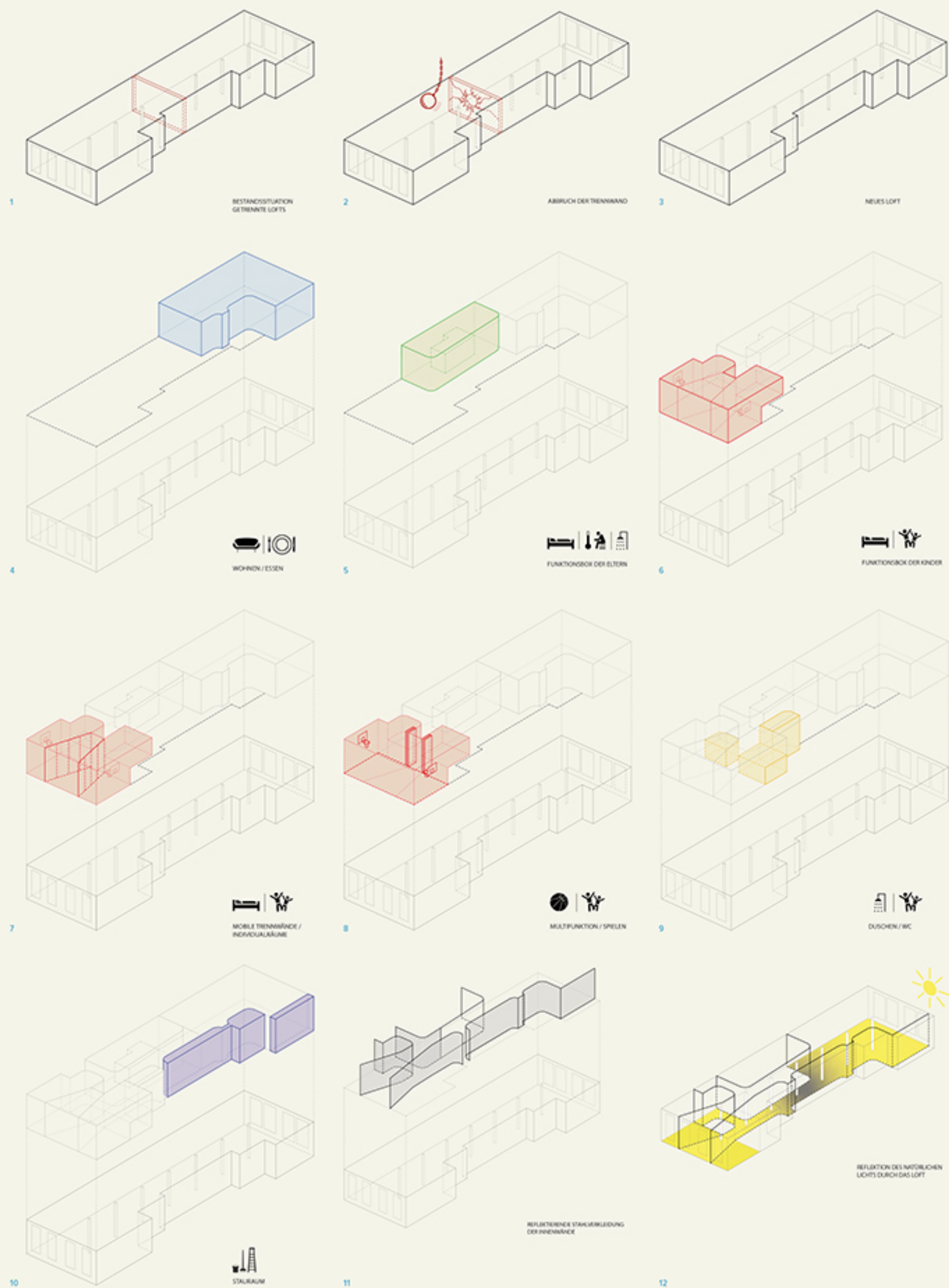


Loft in Duane Street



Two lofts in the New Yorker district of Tribeca have been connected for a family of five to form a 235 m²-large, 33 m-long and 9 m-wide room. Due to the length of the spacious room, and the fact that the windows are positioned only at the front and rear, natural lighting is only possible to a limited extent. In order to reflect the light as far into the room as possible in spite of this, all the installations used were made with high-gloss polished chromium-nickel steel surfaces. Due to this material selection, an exciting play of light and manifold reflections were possible deep into the loft interior. In addition, the metal generates a strongly contrasting interplay between the existing old and patinated brick walls and this perfect new material. The children's rooms are positioned directly at the window facades on one side, and on the other side is the living space with kitchen and dining area. The three children's rooms are separated using mobile walls, and can be connected to form one room. In this way, these sporty children can play basketball in the loft or generate quiet areas in which to withdraw as they require. The parents' bedroom has been placed within the space as an independent structure with a dressing room, bathroom and sauna, and is connected with the loft via glazing and sliding elements.





LOCATION:
New York | USA

ARCHITECTURE:
Christ.Christ.

TEAM
Roger Christ | Sascha Daum

PHOTOGRAPHY:
© Michal Nowak