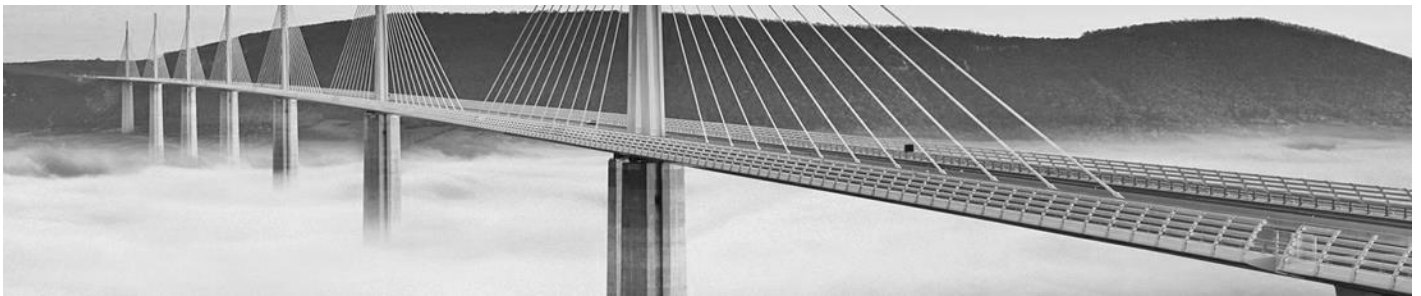


# CIVILWORKS

WEB SERVICES

CIVILWORKS WEB SERVICES



## What is CWS?

CWS (CivilWorks Web Services) is our cloud based platform with multiple services for Civil Engineering. Some of these services are complementary to our desktop solutions and some of them are complete web based solutions.

## Why CWS?

CWS comes from the idea of creating an integrated ecosystem of application software, devoted to Civil Engineering works, allowing a jointly exploitation of data from the different phases/process of a project. From the construction of a highway to the management of explosives, we offer an expert team ready to find out a tailored solution for your needs.

## About CWS

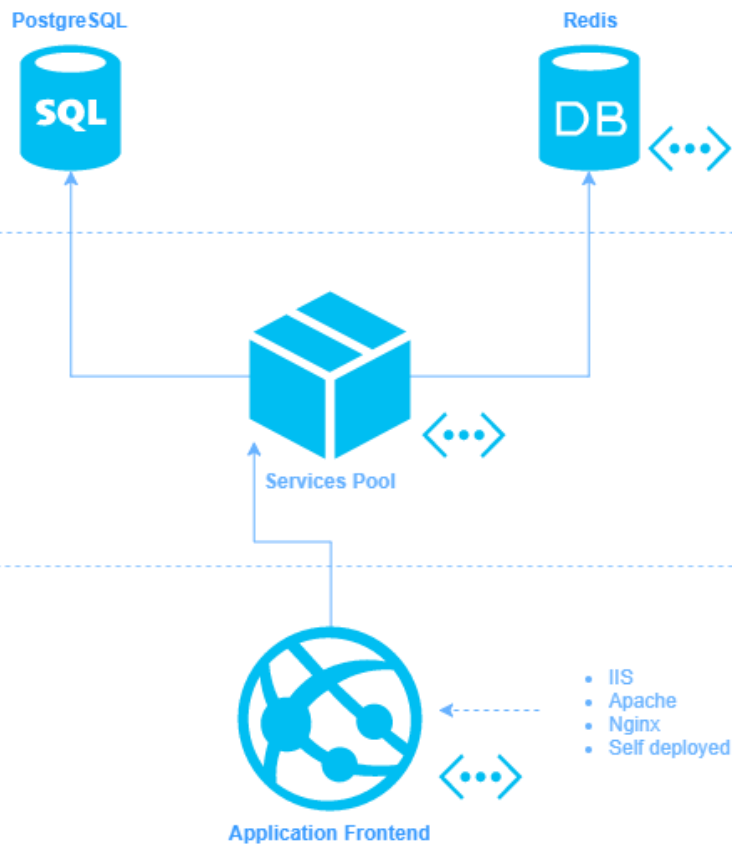
### The base web platform

- ✓ **GIS.** CWS is a comprehensive GIS tool, fully developed by our team.
- ✓ **CAD.** Elementary CAD tools are also available for supporting services basic operations.
- ✓ **3D.** CWS is a full-fledged 3D platform and takes advantage of this feature in all the different services.
- ✓ **Document management.** Managing documents is key to any process or project. CWS provides you with a document manager, thoroughly and homogeneously integrated on any service from the modules.
- ✓ **Briefs and reports.** CWS has its own system for reporting and combining all kind of data, graphics, drawing plans and pictures for obtaining customized outputs at the click of a mouse.
- ✓ **Security.** CWS includes controlled access for platform modules and a user profile system for data query and processing.
- ✓ **Communications.** CWS manages communications external systems when required.
- ✓ **The best customer service:** technical support, platform updates with new functionalities and customized adaptations for the clients specific needs. From customized outputs to tailored functionalities for each field of work.

## The services platform

CWS is the base for a wider working platform

### CWS platform architecture

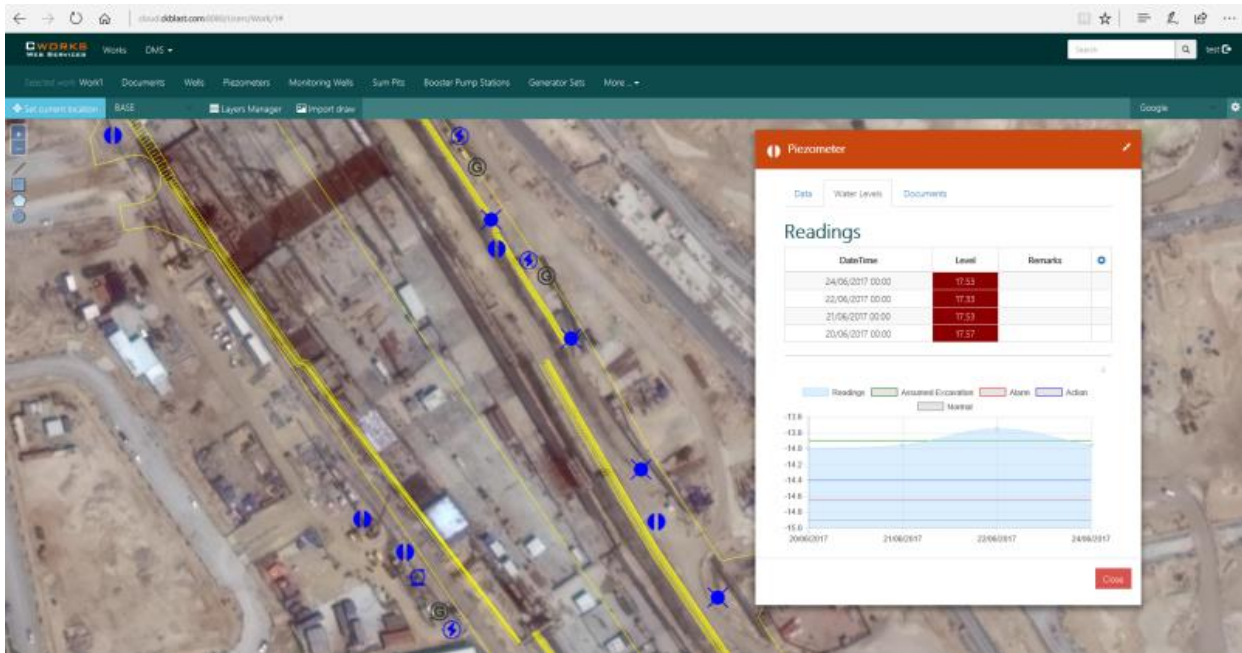


# CWS functionalities

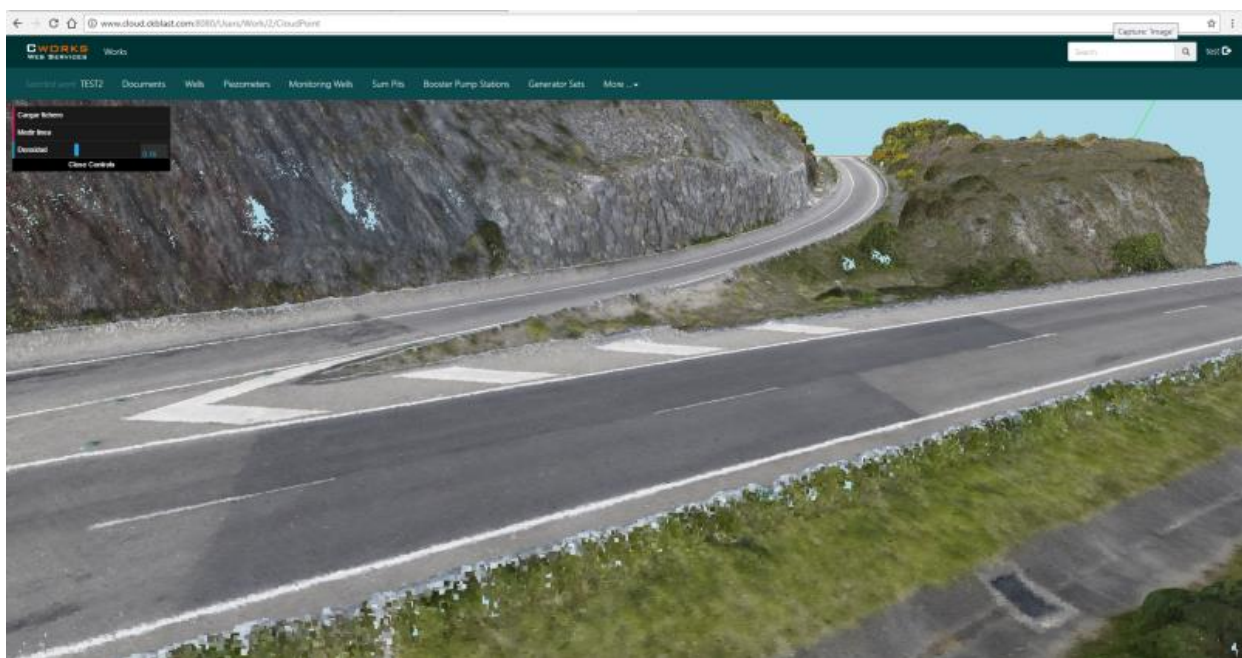
CWS

## GIS

• CWS is able to access different data sources (dxf, kml, Google maps, Openstreetmap, etc.)	✓
• Links between graphic and alphanumeric information	✓
• Comprehensive inventory system of elements with GIS identity	✓
• 3D platform	✓



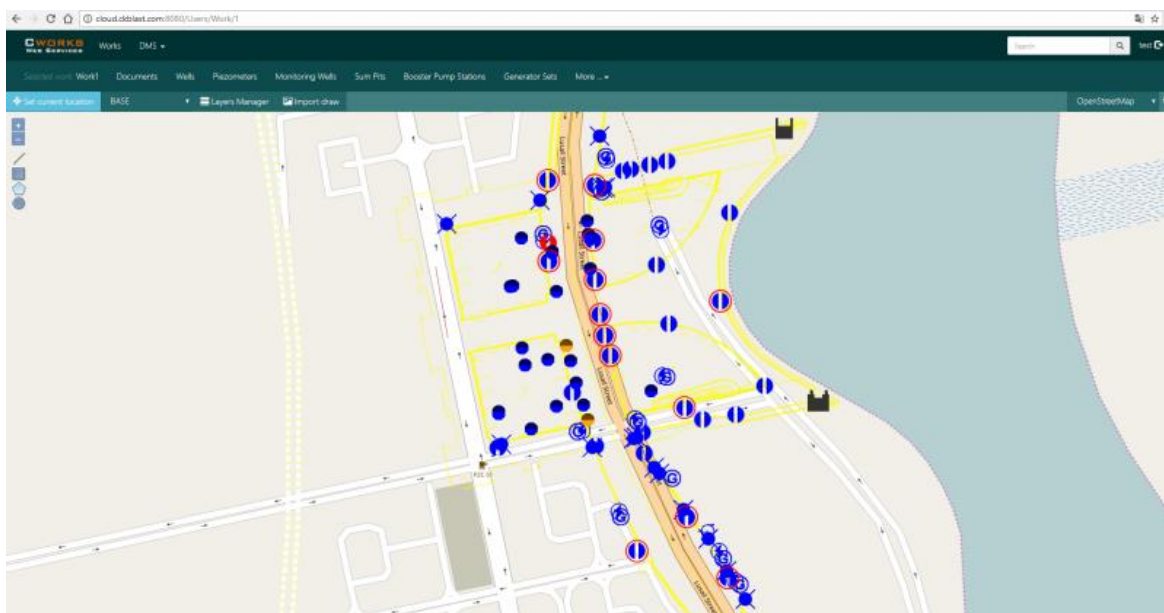
CWS view



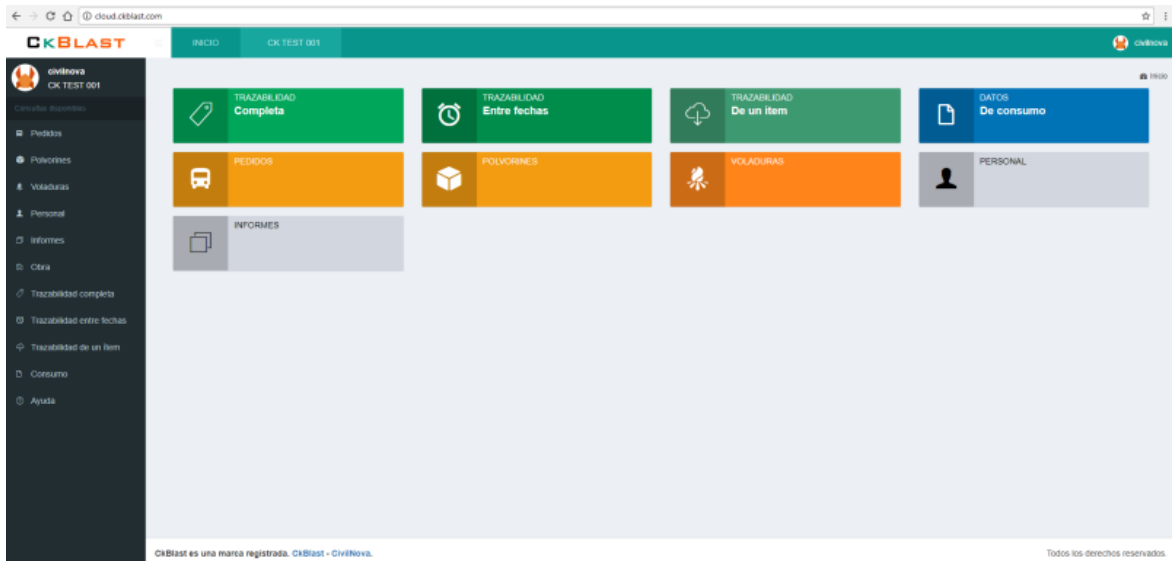
CWS 3D. Slopes monitoring

• Points clouds management	✓
• Multiple tools for information access (spatial queries, geo-processes, specific tools, etc.)	✓

• Length and area measurements	✓
• Interoperable	✓
• Scalable	✓
• Multiplatform	✓
• Dataming operations	✓
<b>CAD</b>	
• DXF file compatibility	✓
• Layers management	✓
• Design tools	✓
• Basic CAD editing functions	✓
• Conversion of CAD entities on inventoried items	✓
<b>Document Management</b>	
• Document integration with GIS entities	✓
• Management of drawings, pictures, minutes, reports, etc.	✓
• Documents version management	✓
• Document characterization	✓
• Integrated queries and filters	✓
<b>Briefs and reports</b>	
• Integrated report generation system	✓
• Report generation as tables, CAD, separated graphics o automatically integrated	✓
• Multi-template-management	✓
• Preview editor	✓
<b>Security</b>	
• Users management	✓
• Profiles with limited access to different areas could be generated	✓
• Includes a qualified signature system for diverse services	✓
<b>Communications</b>	
• Communication management with Android devices	✓
• Communication with Windows Mobile	✓
<b>Technical support</b>	
• Technical support (email, phone, TeamViewer)	✓
• Access to the latest services updates	✓
• Development of customized functionalities	✓
• Automated online updates	✓



DMS view



CkBlast 360

# CIVILWORKS

## WEB SERVICES

[WWW.CIVILNOVA.COM](http://WWW.CIVILNOVA.COM)

### **Software Development Centre**

Polígono Industrial Silvota  
c/ Peña Redonda R42  
Llanera - Asturias - SPAIN

### **Main Offices**

c/Foncalada nº6 1º  
Oviedo - Asturias - SPAIN

(+34) 984 086 393  
[ventas@civilnova.com](mailto:ventas@civilnova.com)