

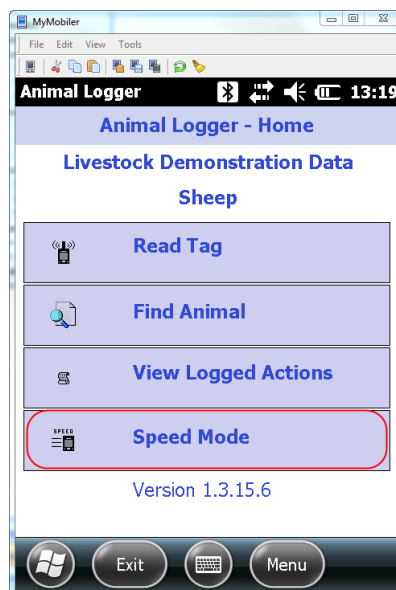
Frequently Asked Questions

Part of

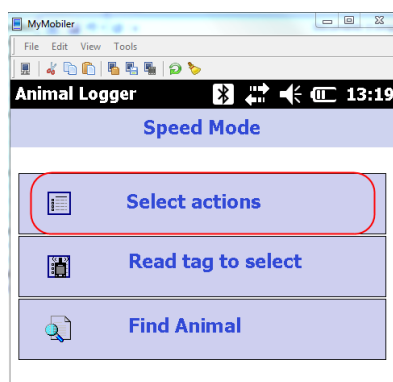


Using Speed Mode in the Animal Logger application on the Workabout Pro (Psion)

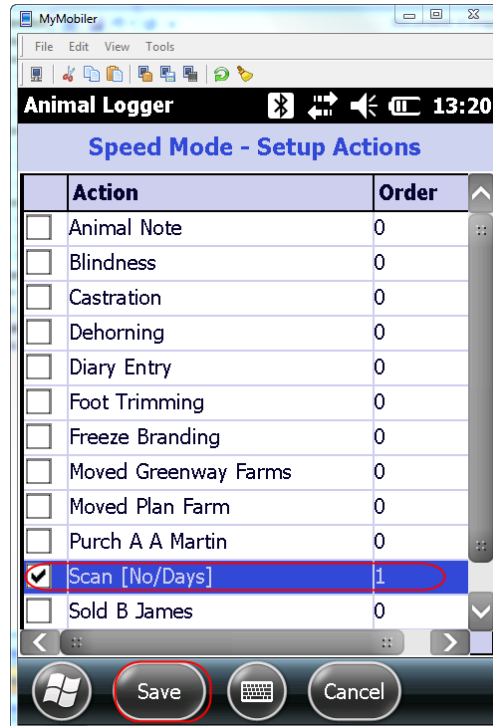
1. Assumptions: The Psion has been setup using the Farmplan program including sending out correct actions for the day/weeks activities. In this example they have sent over the action of 'Scan (no/days)' ready for PD scanning but please select the required action that you are using.
2. Open the Animal Logger program & select Speed Mode



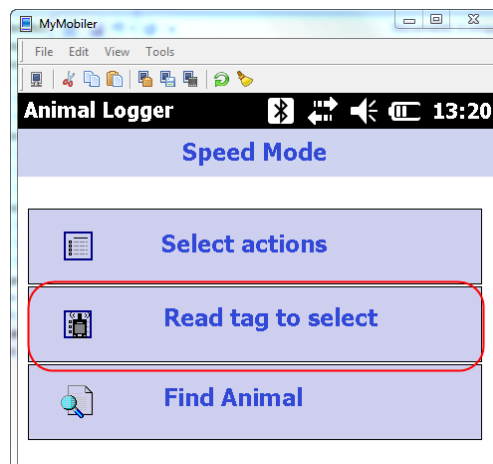
3. Click Select Actions



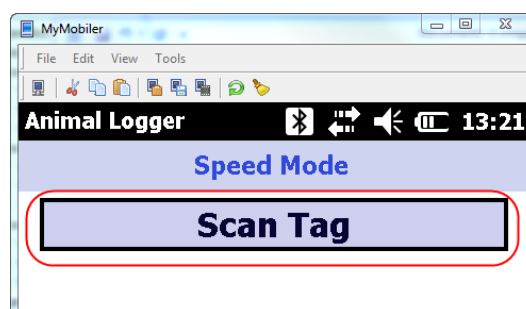
4. Tick the action you require – in this example ‘Scan’, then click SAVE



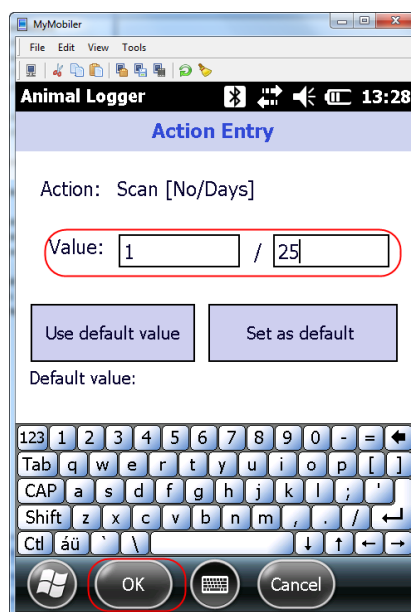
5. To start, select ‘Read Tag to select’ OR ‘Find Animal’ if not using the aircap reader



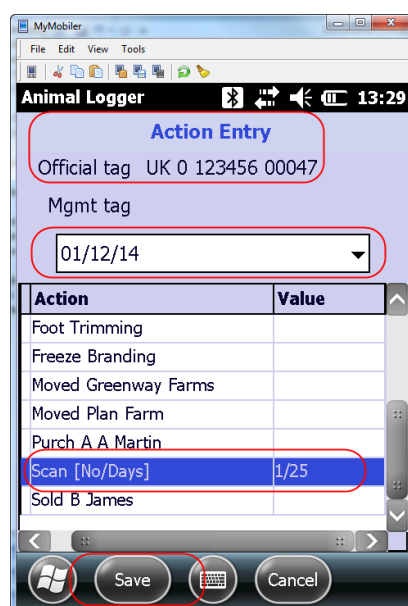
6. The screen will present and give you the option to click ‘Scan Tag’ OR you will be presented with a list of your animals from which you can search for the correct animal.



7. Because you have previously selected the action of Scan it gives you this option – fill in the corresponding boxes, once complete click 'OK'



8. It then gives you a summary screen for the tag you have just scanned – then press SAVE



9. It returns you to the beginning again and the cycle starts again with the next animal to be scanned or found

