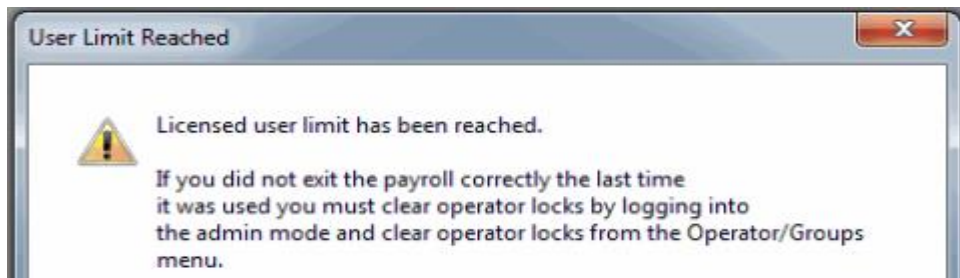
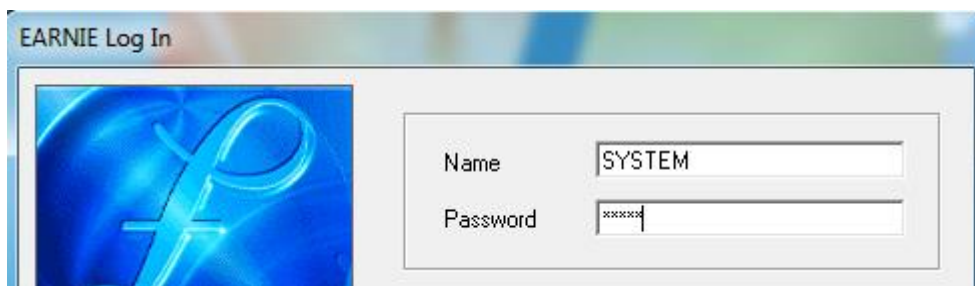


Logging in to Earnie

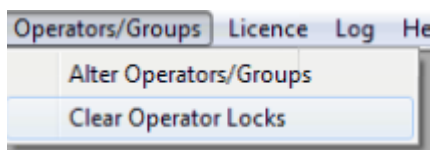
The following message may be shown when trying to open Earnie. This normally appears following some type of computer issue. Eg power cut



To open Earnie type '**System**' into the Name box and '**admin**' into the password box at the Earnie log in screen as below.



On the following screen click 'Operators/Groups' then 'Clear Operator Locks'.



To open the program click 'File' then 'Use Earnie'.

