

Downloading your program

Installing for the first time

Please go to step 1.

If you are updating your version

Before installing your program please make sure you have taken a backup of your data (file and backup), closed the program and restarted your computer.

To install

1. Go to www.farmplan.co.uk
2. Go to the Support tab
3. Scroll down the page and click on the relevant program

Product download, support and documentation



Crops

Gatekeeper
Gatekeeper Express



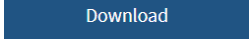
Livestock

Cattle Manager
Cattle Focus
Sheep Manager
Livestock Manager
Flock Manager
Animal Logger
Virtual Stick


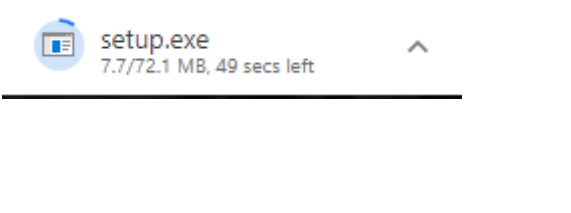

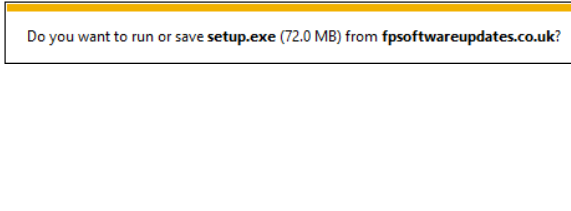

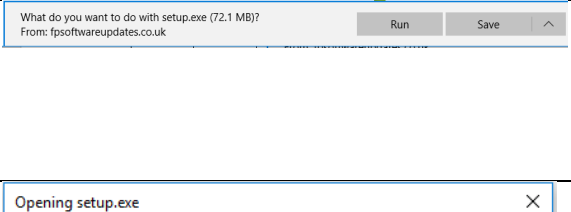

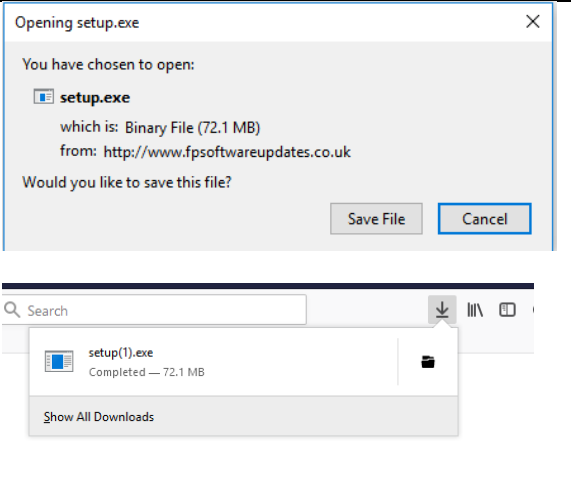


Business & accounts

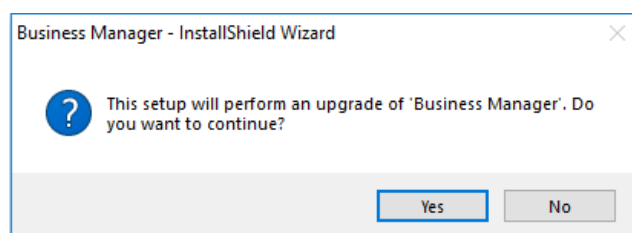
Business Manager
Cash Manager
Cash Focus
Earnie Payroll
Property Manager
Sales Order Processing

4. Select the  button
5. Enter your customer number and click **Validate**
6. Read the Enhancement Booklet by clicking **Open Enhancement Booklet**
7. When ready, click the **Download Program Now** button
8. Run the setup.exe file. This can be found in the following location:

.....

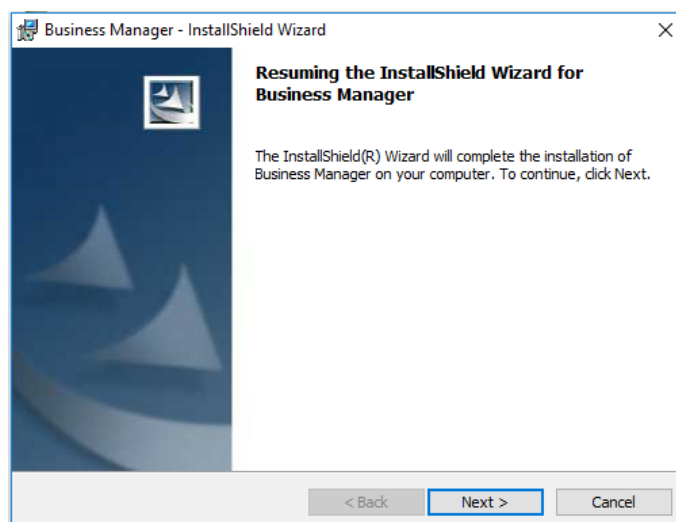
Internet Browser	Location	Image	Option
Google Chrome 	Bottom left		Click on the exe file and select Open when done
Internet Explorer 	Bottom of screen		Click on Run or Save and then click the exe file
Edge 	Bottom of screen		Click on Run or Save and then click the exe file
Firefox 	Centre of screen		Select to Save File and then click the arrow in the top right corner and click the exe file

- You will then be taken to an InstallShield Wizard. This may show you are upgrading your version if you have previous versions installed. For this example it shows Business Manager, please check this shows the correct program before continuing.

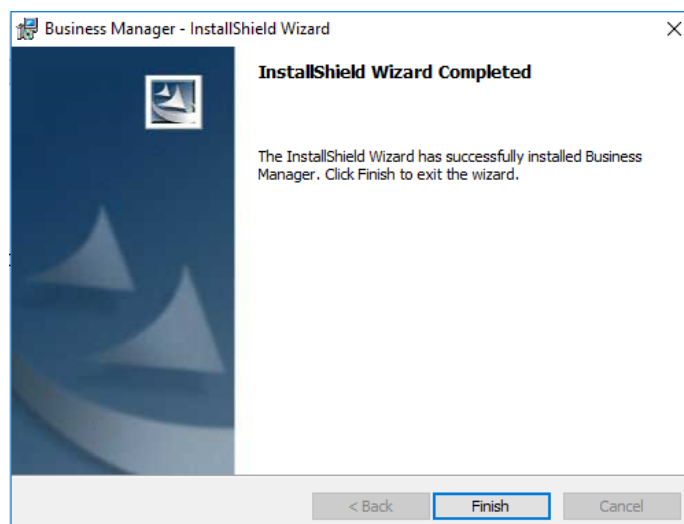


10. If this is your first time installing or you are moving to a new machine, you will be taken through a series of screens where you will be required to select the install location and agree to the user licence.

11. Follow the **Next** prompts to go through the screens



12. Once the update is complete you can click **Finish**



13. You can access your accounts software from the Start menu within the **Farmplan** folder.