

Frequently Asked Questions

Import Dawn Meats slaughter details

1. Ensure you are on at least Version 1.44 (Help and About within the program)
2. Log into the Farmer Portal: <https://farmerportal.dawnmeats.com>



Dawn Meats CarcaseWeb v1.25851



Username:

Password:

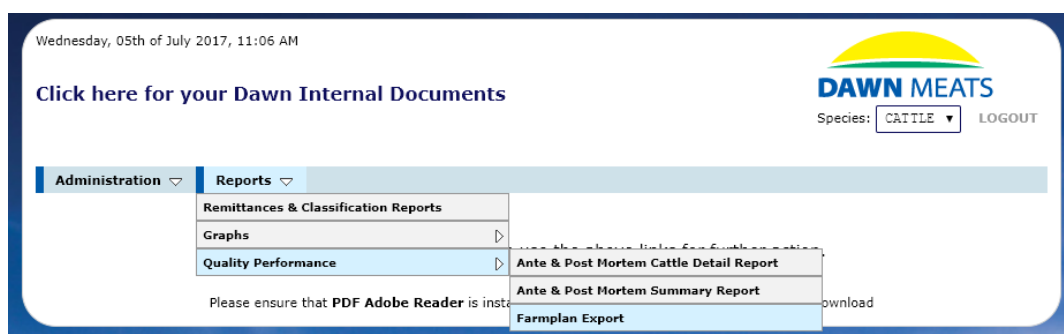
Remember my username on this computer

Dawn download

Dawn Farmer Portal


if you are a new farmer without an account please click here.

3. Go to Reports > Quality Performance > Farmplan Export.



Wednesday, 05th of July 2017, 11:06 AM

[Click here for your Dawn Internal Documents](#)

 Species: LOGOUT

Administration ▾ Reports ▾

Remittances & Classification Reports	
Graphs	
Quality Performance	Ante & Post Mortem Cattle Detail Report
	Ante & Post Mortem Summary Report
	Farmplan Export

Please ensure that PDF Adobe Reader is installed

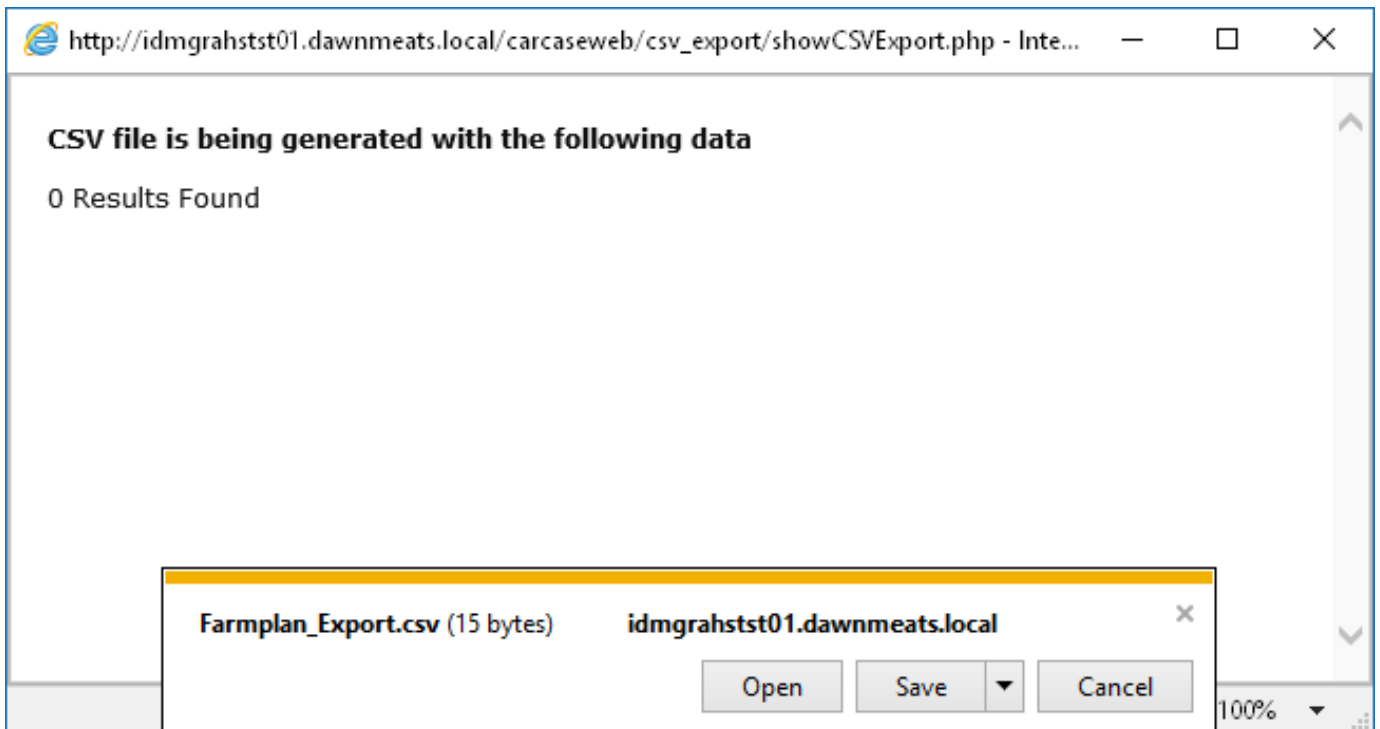
4. Set the date range in the respective fields then click CSV Export.

The screenshot shows the 'FARMPLAN EXPORT (CW122)' interface. At the top, there are navigation tabs for 'Administration' and 'Reports'. The main content area is divided into two sections: 'DATE RANGE' and 'OTHER CRITERIA'. In the 'DATE RANGE' section, there are two date pickers: 'Date From:' and 'Date To:', both set to '05/07/2017'. A 'Clear Cookies' button is located to the right of the 'Date To:' field. In the 'OTHER CRITERIA' section, there are four dropdown menus: 'Site:' (All Sites), 'Agent:' (WILLI014 E G WILLIAMS), 'Producer:' (All Producers), and 'Farm:' (All Farms). A 'Clear Cookies' button is located below the 'Farm:' dropdown. At the bottom of the form, there are two buttons: 'Show Preview' and 'CSV Export'.

5. Depending on your browser, different things will now happen. Below shows you how to download the file for each browsing software.

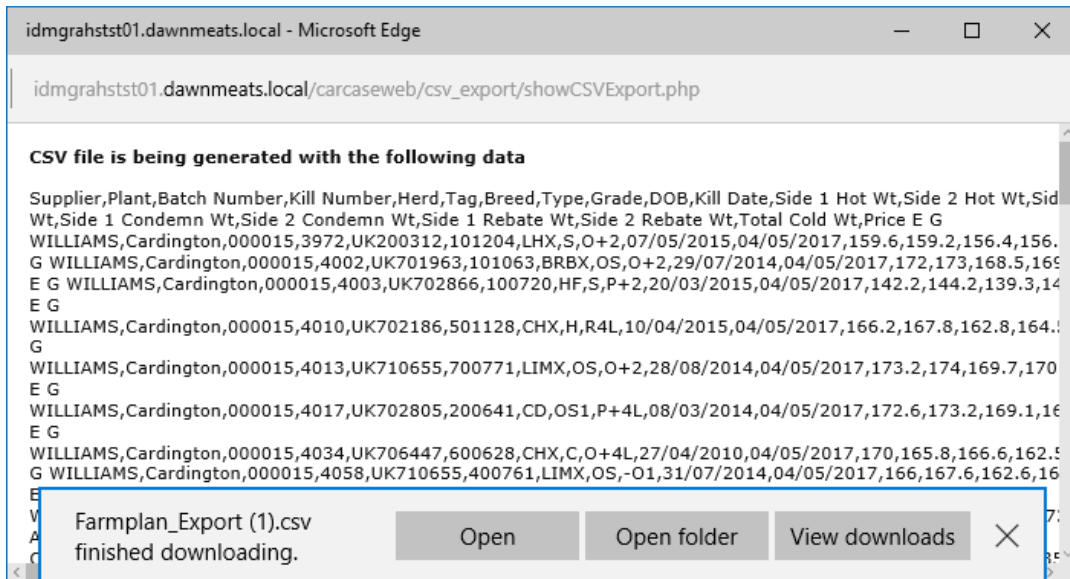
Internet Explorer

Clicking CSV Export opens the below pop up window. Click Save. The file will now be in the Downloads folder.



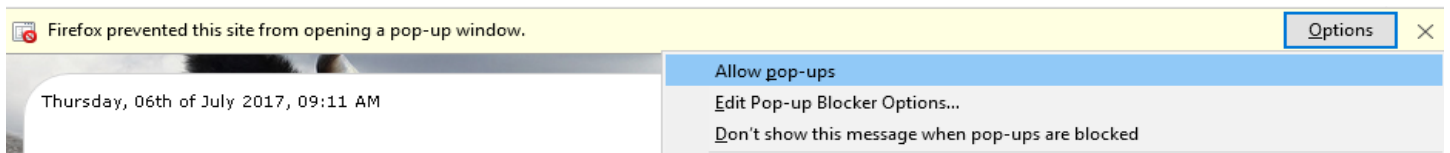
Microsoft Edge

Your export should automatically be saved in your Downloads folder.

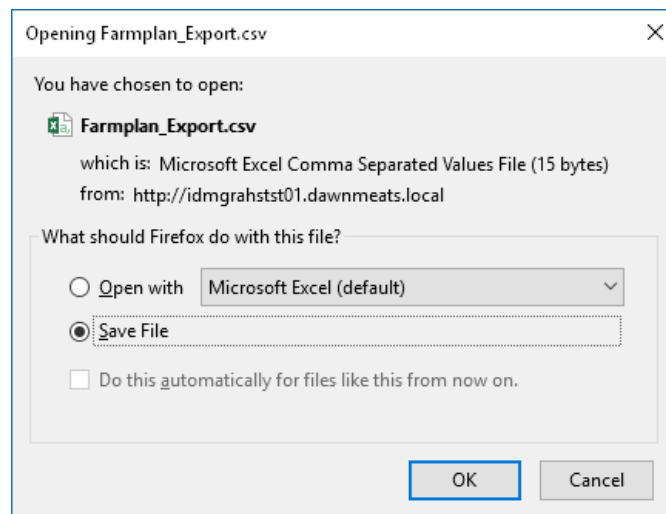


Mozilla Firefox

Click on Options > Allow Pop-ups

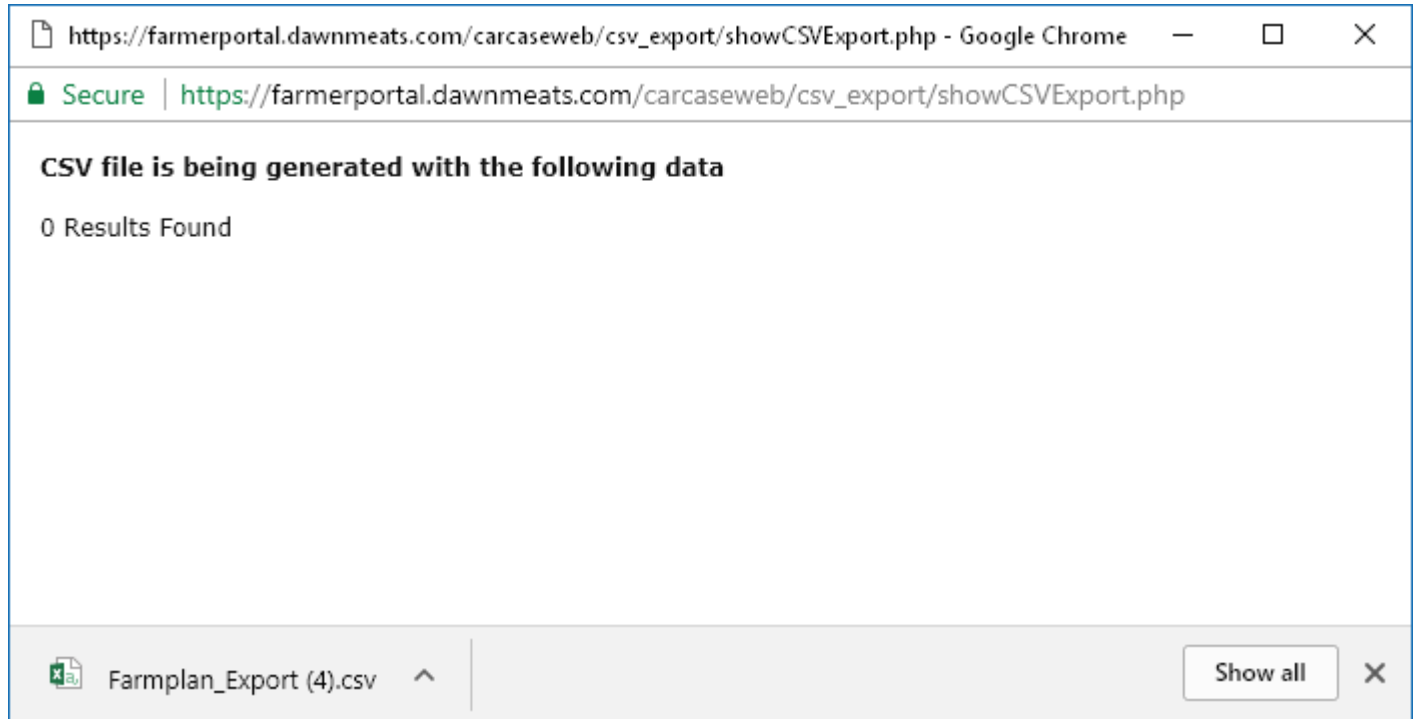


You will now get the popup asking if you wish to open or save the file. Click Save File. You can now find the file in your Downloads folder.



Google Chrome

Your export should automatically be saved in your Downloads folder.



6. Within the program the sale needs to have been entered with a tick against the **'sold for slaughter'** box and the **'MLC classification grid'** option selected
7. Go to Import via **File > Import/Export wizard > Dawn Meats > next**
8. Browse to the file at the top of the screen and click on **Read**. This will populate any carcass classification grades and prices.