



Farmplan
gatekeeper

Gatekeeper update

Release notes Version 4.15.18

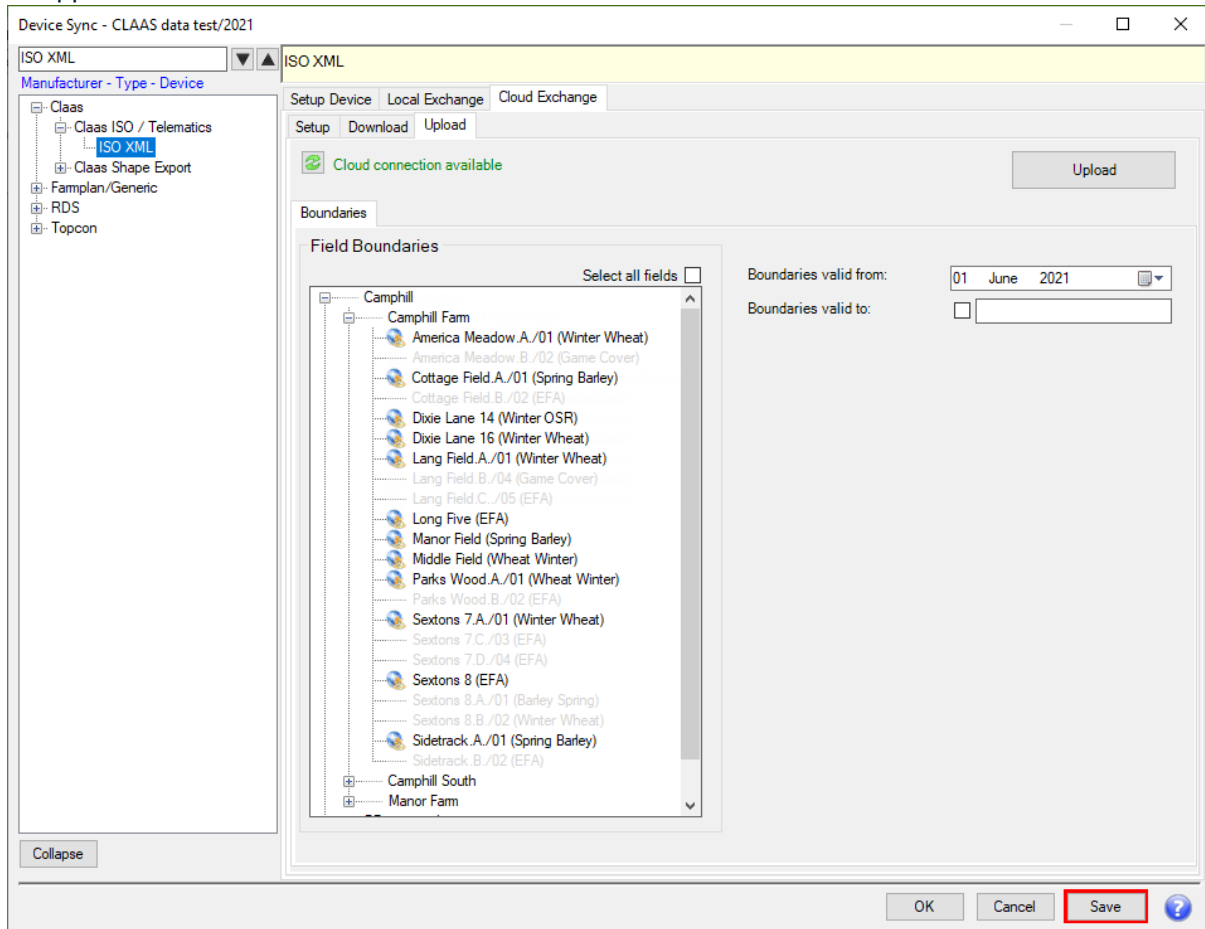
Device Update



Proagrica

CLAAS Telematics Integration

This update introduces cloud (wireless) integration with the CLAAS Telematics website. It will allow customers to both upload their field boundaries straight from Gatekeeper and also download the yield and as-applied data stored in CLAAS Telematics.



The integration with the CLAAS API makes it simpler for users to move data from one system to another and utilise the best features each system has to offer.

N.B It is vitally important that before boundaries are loaded from Gatekeeper to Telematics the existing boundaries within Telematics are given a valid end date. This must be done on a farm by farm basis. If not then existing data boundaries could be lost.

Program Update

e-learning Module



Farmplan is always trying to improve the customer experience of our products and as such we have invested in the creation of an e-learning platform to allow users to access self-learning of our products out of hours and at a more convenient time for them.

Quick Plan

Add Plan ▾ Quick Plan Edit Plan

Quick Plan feature has been added to allow users to jump straight in to the Field selector window to build a field operations job when building plans. This skips the Planning Setup window and the Add New Job window but yet still allows them to be edited after the creation of the job should this be required. This streamlines the plan creation process in Gatekeeper making it easier for customers to generate work plans.

Sentinel Product selector

The Sentinel Pesticide database contains roughly 9,800 products of which only a third are currently legally allowed to be applied to fields, with the rest being retained in the database for verification purposes. The new improved Setup Product window now only shows users the list of legal active chemicals to pick from when creating products in stock. This makes it both simpler and less complicated to add the right new chemicals.

Improved Sentinel Product view

Setup Products for Fungicides

Add New Product Delete In All Periods Merge In Current

Heading category Variable Costs

Heading Fungicides

Name topas

Family prefix Toledo (18298) Topas (16765) Topenco (17539) Topguard (18723) Topguard (19596) Toprex (16456) Topsin WG (13988) Toran (18239) Torsion (18476) Torsion II (19061) Tracifin Plus (19212) Tracker (16048) Trianum G (16740) Trianum P (16741)

Details Extra C

Default job product

Application units

Previous Sentinel Product view

Setup Products for Fungicides

Add New Product Delete In All Periods Merge In Current

Heading category Variable Costs

Heading Fungicides

Name Topas (16765)

Family prefix Top Farm Fluazinam (07683) Topas (08458) Topas (09717) Topas (16765) Topas C 50 WP (08459) Topas D 275 SC (08460) Topenco (17539) Topenco 100 EC (11972) Topenco 100 EC (17161) Topguard (18723) Topguard (19596) Toprex (16456) Topsin WG (13988) Toran (18239)

Details Extra C

Default job product

Application units

A tick-box 'Include expired product' allows users to switch to the full list should they wish to with the expired products shown as greyed out.

Setup Products for Fungicides

Add New Product Delete In All Periods Merge In Current Period

Heading category Variable Costs

Heading Fungicides

Name Topas (16765)

Family prefix

Sentinel

View Sentinel Product

Include expired products

Linked