

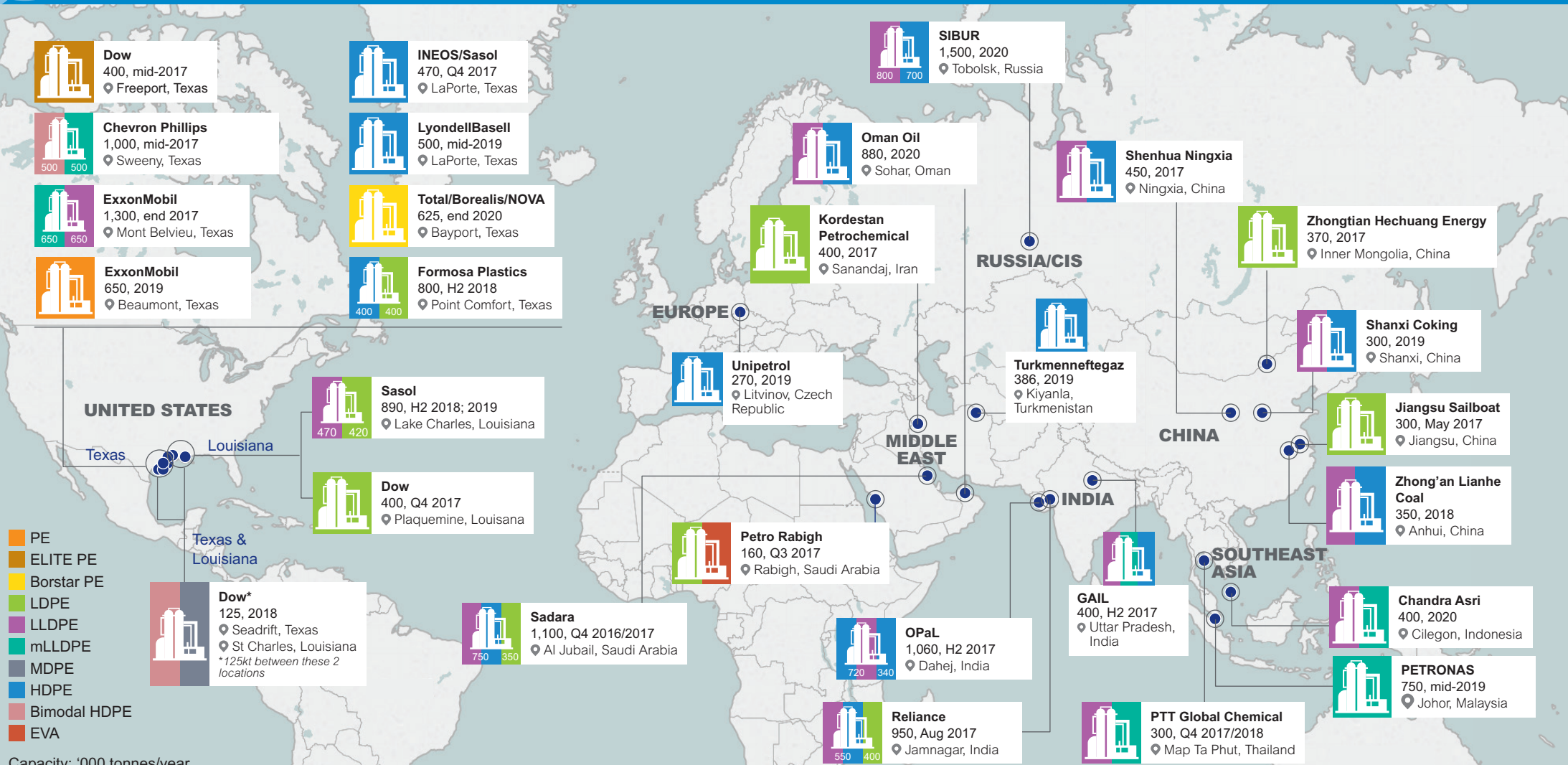


# NEW POLYETHYLENE (PE) CAPACITIES TO HAVE WIDESPREAD IMPACT

By Linda Naylor & Katherine Sale

New PE capacities coming on stream globally- and particularly in North America - are having an impact on sentiment and pricing in some areas. The trade spat between China and the US is expected to affect trade flows globally, as some PE grades have an import duty of 25% slapped on them. The impact on global supply and demand balances will be far reaching.

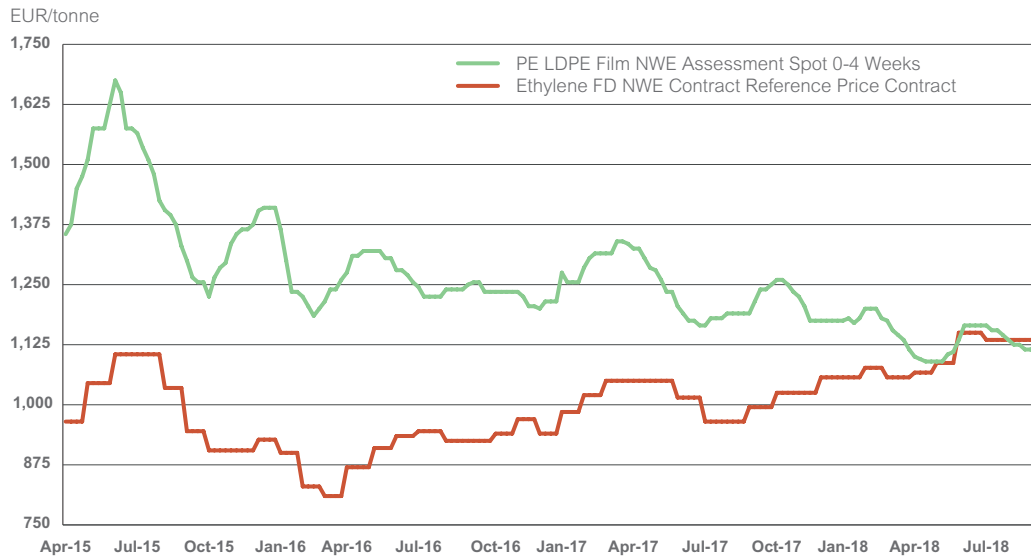
## GLOBAL PE EXPANSIONS



- PE
- ELITE PE
- Borstar PE
- LDPE
- LLDPE
- mLLDPE
- MDPE
- HDPE
- Bimodal HDPE
- EVA

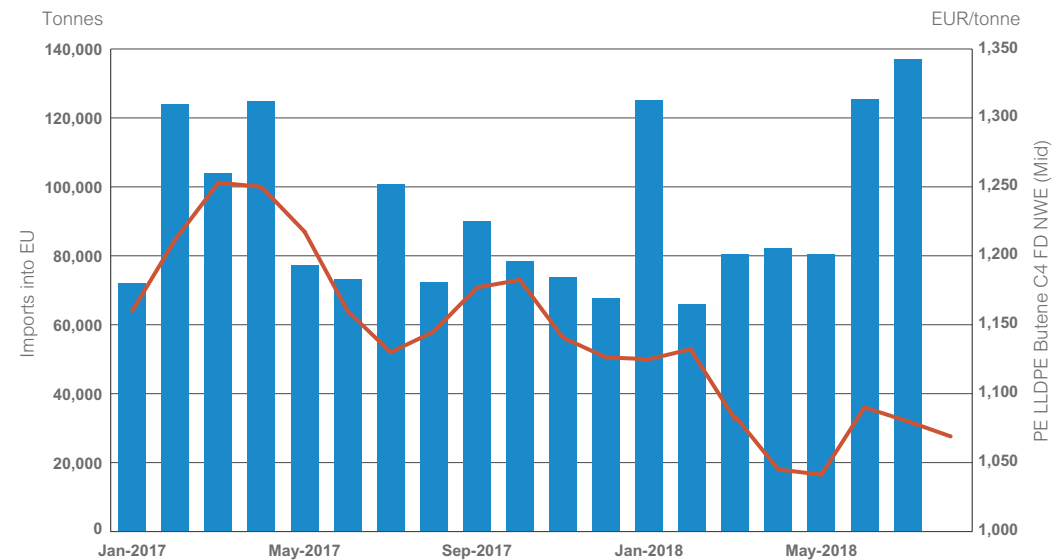
Capacity: '000 tonnes/year

## SPOT LDPE V ETHYLENE CONTRACT



The spread hit high levels in 2015 on supply shortages, and has been decreasing ever since.

## LLDPE IMPORTS AND SPOT PRICES



There is a clear correlation between higher import levels and lower linear low-density PE (LLDPE) C4 spot pricing.

## TRACK GLOBAL PE PLANT SHUTDOWNS AND OUTAGES

Our new and enhanced petrochemical analytics and insight puts you in a stronger position so you can optimise your trades, plans and strategies in order to secure a competitive advantage.

- Pre-empt competition and enrich strategic plans
- Gain new context and negotiating tools
- 360-degree, real-time global view of the market



[Enquire more about our analytics solutions here](#)

## SUPPORT YOUR STRATEGIC PLANS WITH A LONG-TERM VIEW OF SUPPLY AND DEMAND FOR PETROCHEMICALS MARKETS

The ICIS Supply and Demand Database delivers an end-to-end perspective of global petrochemical markets, covering 160 countries and over 100 products.

- Historical and forecast data (1978-2040)
- Plant capacity, production and operating status
- Petrochemical trade flows and patterns

[Click here to find out more](#)