

Interim Taxi Facilities

Concept Design Euston Square Gardens
February 2017

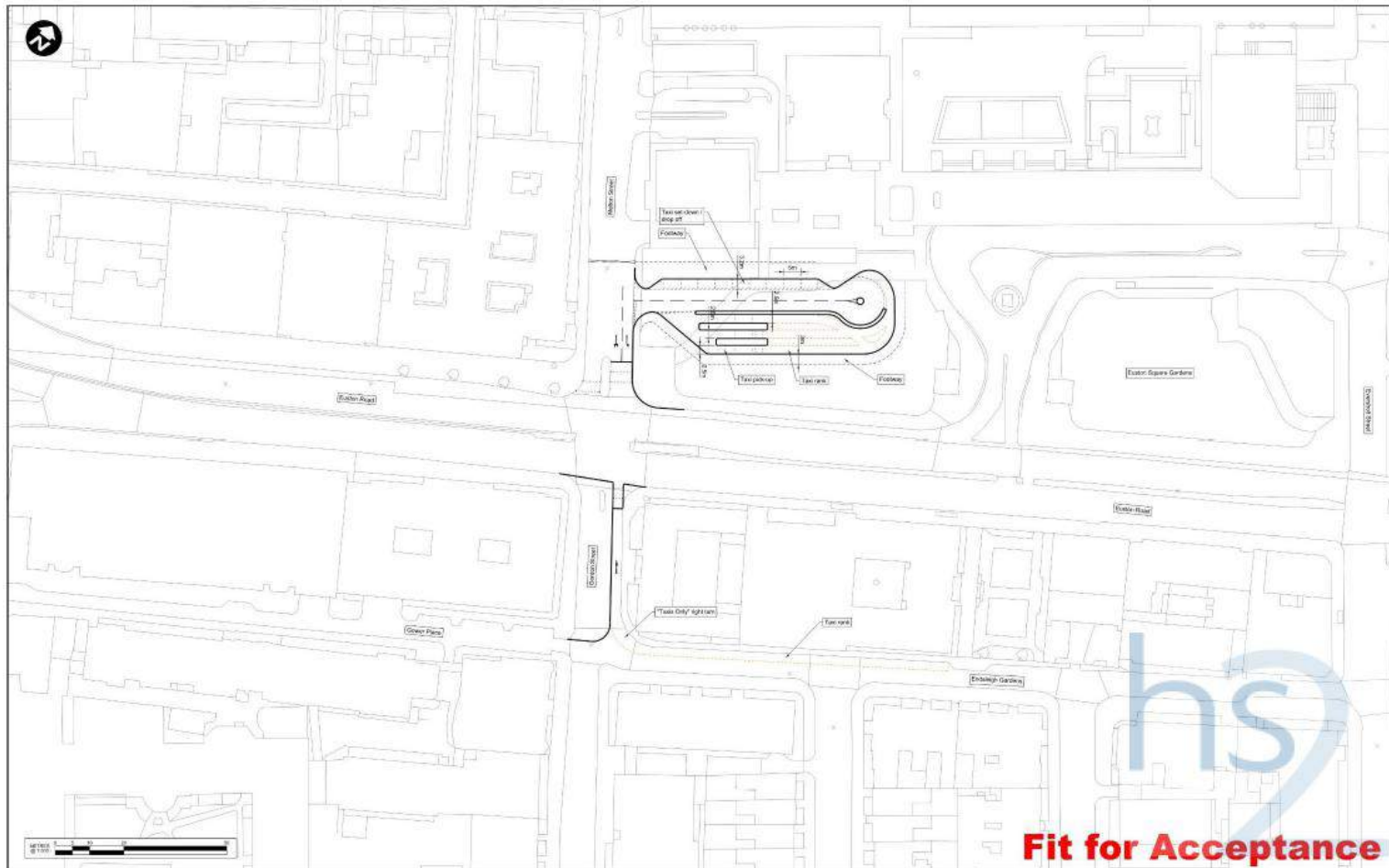
Construction Phase – AP3 Adopted Interim Taxi Schemes

- The Bill scheme identified the following locations for temporary taxi facilities:
 - Euston Square Gardens (2018 – 2022) - move needed due to closure of the basement facility and utilities works on Eversholt Street (sewer diversion) Q2 2017 to Q1 2020
 - Eversholt Street (2023 – 2026) – move due to London Underground works Euston Road/ Gordon Street
 - New Cobourg Street (2026 – 2033) – move due to station completion and the need for a larger facility closer to the HS2 platforms

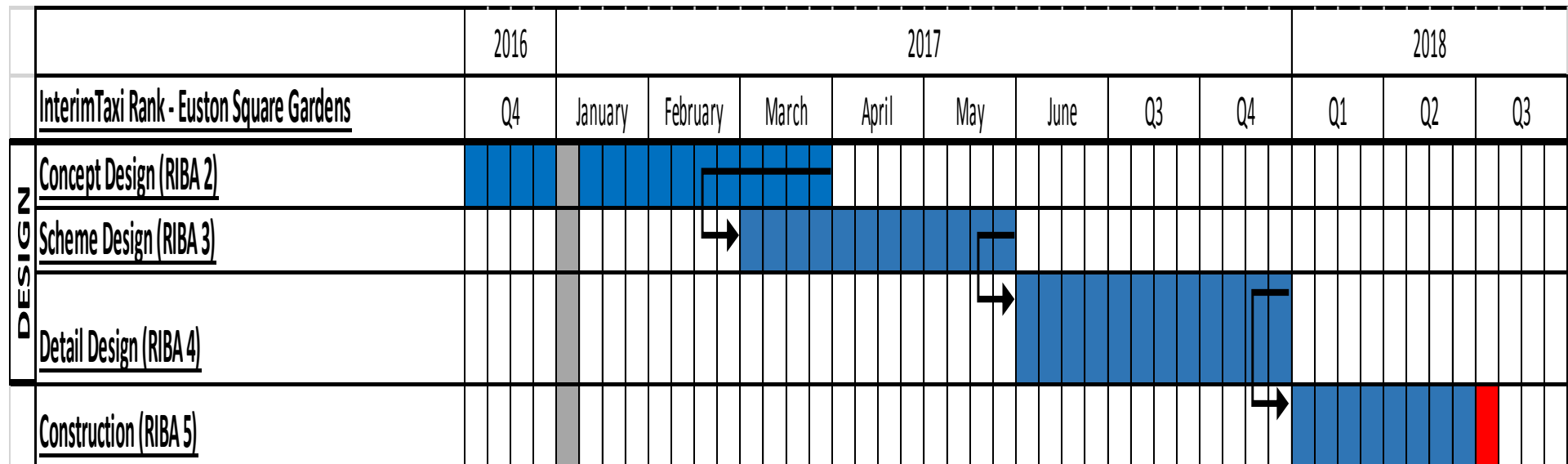
Temporary taxi facility at Euston Square Gardens (2018 – 2022)

- Existing taxi facilities to be closed by mid-2018 when the temporary taxi facilities will begin operating in the Euston Square Gardens (west)
- Secondary rank located on Endsleigh Gardens and Gordon Street for access to the taxi facility
- 6 taxi pick-up bays with provision for shared-taxi use
- Taxi set-down comprising of 9 bays
- Option uses broadly similar routing by taxis to and from the existing Melton Street/Cardington Street taxi facility at Euston station
- Additional set-down facilities located on Eversholt Street

AP3 Euston Gardens (west) temporary taxi facility



Programme for Interim Taxi Facilities

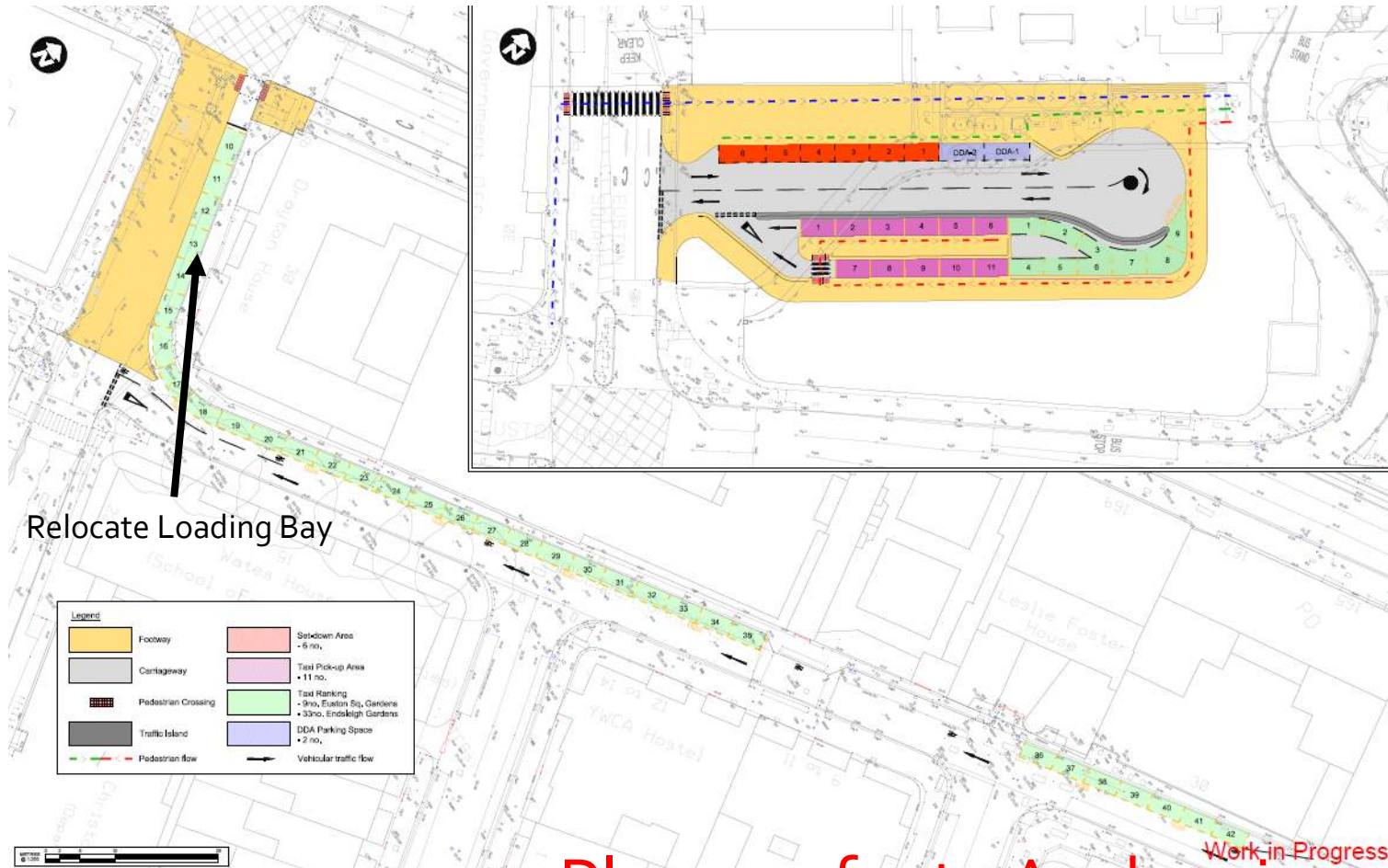


Indicative, subject to change

Temporary taxi facility at Euston Square Gardens (2018 – 2022)

- Three options based on the Bill Interim Taxi Facility in Euston Square Gardens have been developed for engagement
- The plans will be available for viewing and comment at HS2iE from 22/02/2017 – 04/03/2017
 - HS2iE will be open 10-2pm on Saturday 4 March for people to drop in.
 - There will be a presentation on the options at 1.30pm
 - The plans will also be presented at the Camden Community Traffic Working Group w/c 6 March 2017
- HS2 will review comments provided to inform the conceptual design development

Euston Square Gardens – Option 1A

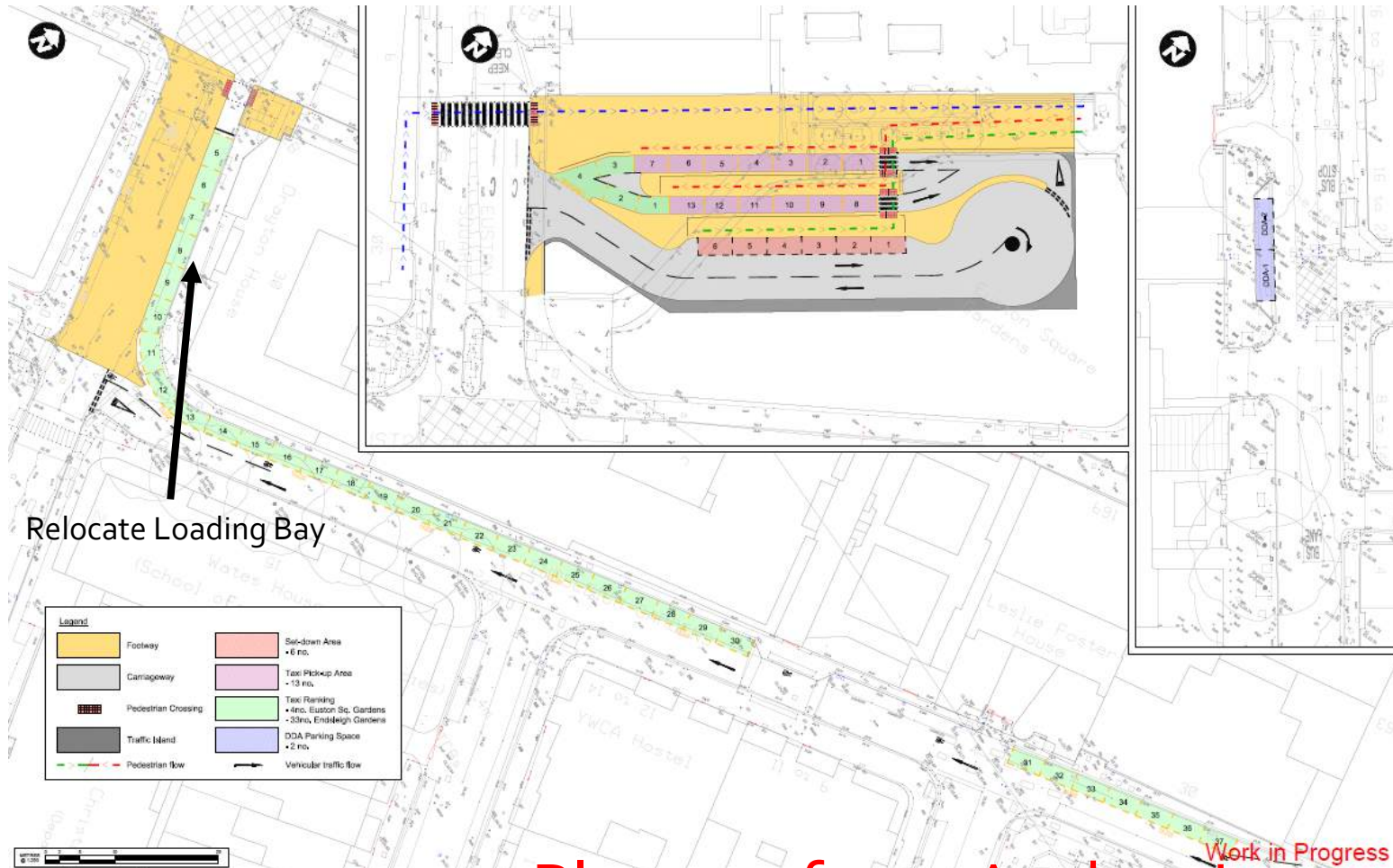


Please refer to A1 drawing

Option 1A

- PROS:
 - Minimal change from existing taxi routing
 - Approximately 42 ranking spaces and 11 pick-up bays
 - Dedicated crossing that routes pedestrians north of the facility entrance across Melton Street
 - Minimal junction/highway changes required
 - Additional set-down spaces on A4200 Eversholt Street
- CONS
 - Mobility Assistance Reception (MAR) route to station from taxi facility
 - Potential for re-circulation of set-down vehicles onto Euston Road
 - Taxi passengers travel to/from the facility along a managed pedestrian route
 - Servicing buildings on Endsleigh Gardens and Gordon Street

Euston Square Gardens – Option 1B



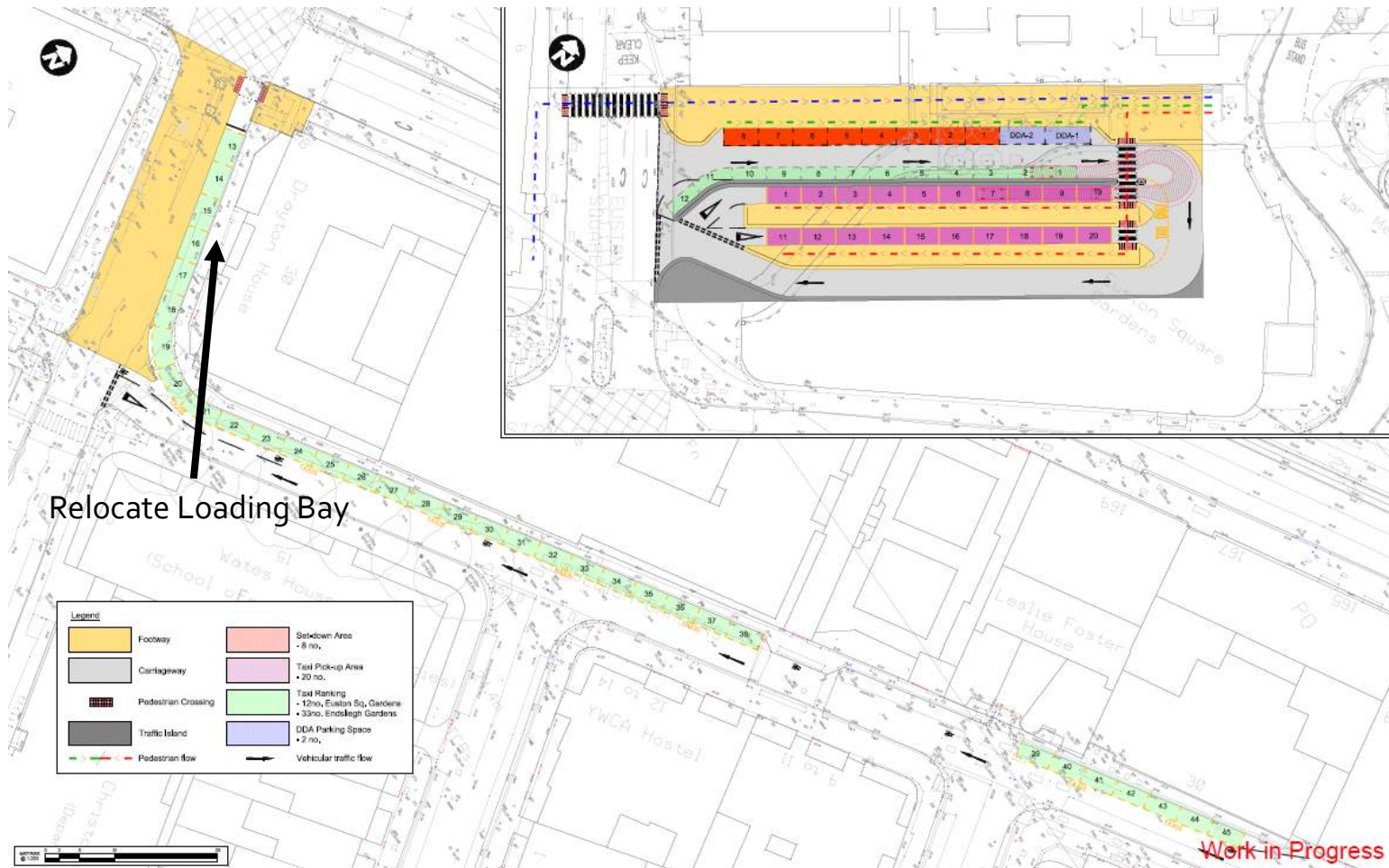
Please refer to A1 drawing

Work in Progress

Option 1B

- PROS:
 - Minimal change from existing taxi routing
 - Approximately 37 ranking spaces and 13 pick-up bays
 - Dedicated crossing that routes pedestrians north of the facility entrance across Melton Street
 - Minimal junction/highway changes required
 - Potential for additional set-down spaces on A4200 Eversholt Street
- CONS
 - MAR route to station from DDA bays on Eversholt Street
 - Potential for re-circulation of set-down vehicles onto Euston Road
 - Taxi passengers travel to/from the facility along a managed pedestrian route
 - Servicing buildings on Endsleigh Gardens and Gordon Street

Euston Square Gardens – Option 1C



Please refer to A1 drawing  *engine for growth*

Option 1C

- PROS:
 - Minimal change from existing taxi routing
 - Approximately 45 ranking spaces and 20 pick-up bays (highest capacity)
 - Dedicated crossing that routes pedestrians north of the facility entrance
 - Minimal junction/highway changes required
 - Potential for additional set-down spaces on A4200 Eversholt Street
- CONS
 - MAR route to station from taxi facility
 - Potential for re-circulation of set-down vehicles onto Euston Road
 - Taxi passengers travel to/from the facility along a managed pedestrian route
 - Servicing buildings on Endsleigh Gardens and Gordon Street

Tree loss

- At ECRG 21/02/17 – Community representatives asked for information on the number of mature trees affected by the HS2.
- The trees outlined in red will be removed due to the construction of HS2
- The trees in outlined in black are planned to be retained
- This is as assessed through the Bill.



Tree replacement

- At ECRG 21/02/17 – Community representatives asked for information on the number of mature trees affected by the Hs2.
- The trees in yellow will be replaced once the High Speed platforms are completed
- The trees in dark green are planned to be retained

