



Welcome to the Oxfordshire Cotswolds Garden Village Stakeholder Workshop

Tuesday 12 June 2018

Introduction

Kevin Murray

Purpose

- Update on Garden Village proposals and rationale
- Introduce the team
- Scope the issues that need to be addressed for a successful scheme
- Explore how the Garden Village can be planned and delivered
- Understand stakeholder roles and aspirations - where elements fit within a wider whole
- Explain the next steps in the process

Today's workshop

- 10.00 Welcome and initial briefing
- 11.00 Coffee
- 11.15 Group session 1 - Exploration of concept and issues
- 12.15 Group feedback
- 13.00 Lunch
- 13.45 Group session 2 - Scoping challenges and parameters to address
- 15.00 Tea
- 15.15 Feedback
- 16.00 Close and next steps

Introductions

- Grosvenor Britain & Ireland - Developer
- AECOM - Planning
- Terence O'Rourke - Masterplanning & environment
- Peter Brett Associates - Transport & engineering
- Four Communications - Community engagement
- Kevin Murray Associates - Facilitation

Today's engagement

- Chatham House Rule
- Bring your specialist and/or local knowledge
- Add your external perspectives
- Think of other roles and users
- Look across a generation
- Be challenging
- Objections go into formal process, not here

Why Grosvenor

Silvia Lazzerini
Grosvenor

Why Grosvenor?

...we are a property company with over 300 years of experience

- Corpus Christi College
- City Farm Trust
- Oxfordshire County Council
- Solloway
- Summerfield
- Florey & Watts



Locally-Led Garden Villages, Towns and Cities
Application Process Guidance

Local Plan Modifications



1st Stakeholder Workshop

July 16

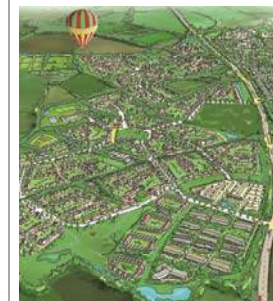
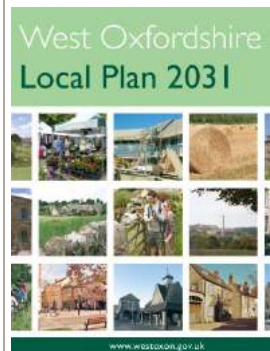
Oct 16

Sept 16

Mar 17

June 2018

Oxfordshire Cotswolds Garden Village
WODC Expression of Interest



Our credentials ...reflect local knowledge, the strength of our selected team and our ability to bring our partners with us



Trumpington Meadows, Cambridge
"Raises the bar for the next generation of communities by being a 21st century Welwyn Garden City"



Barton Park, Oxford

"This project aims to create a garden city suburb in Oxford and the judges were impressed by the excellent partnership between private and public sectors to enable growth"



Our values ...align with garden village principles

We care about nature, as a way to add ecological and commercial value and benefit health and well-being



We care about strong and successful communities, not just new housing and commercial return

A 'Living Cities' philosophy



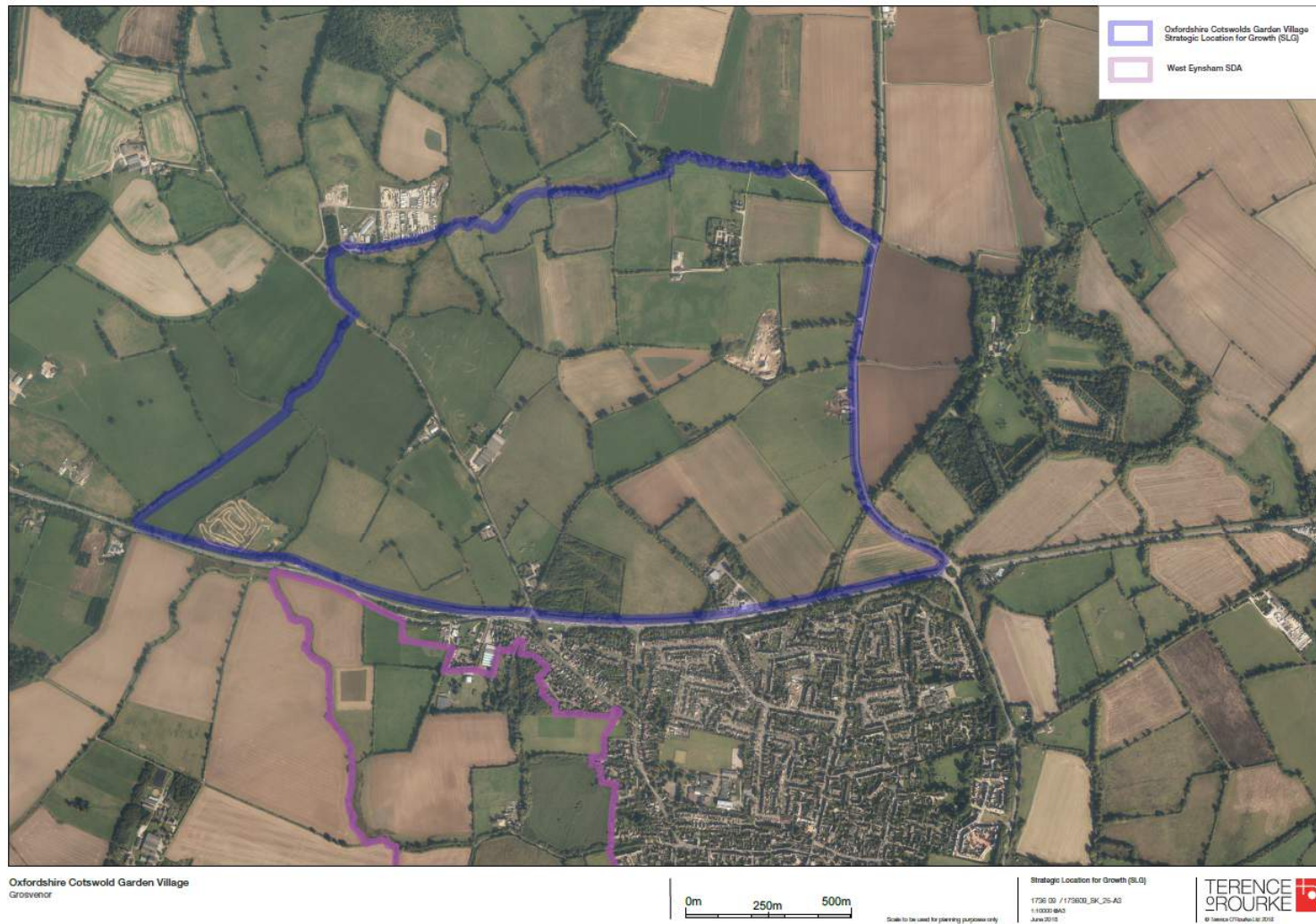
Programme

	MAR '18	APR '18	MAY '18	JUN' 18	JUL' 18	AUG '18	SEP' 18	OCT '18	NOV '18	DEC' 18	JAN' 19	FEB' 19	MAR '19	APR '19	MAY '19	JUN' 19	JUL' 19	AUG '19	SEP' 19	OCT '19	NOV '19
WODC Local Plan	Consultation	Examination	Public Issue	Cabinet Meeting Vote	Adoption																
WODC AAP		Options and Issues	Cabinet Vote		Preferred Options development			Pre-Submission Draft AAP					Final Plan Prep	Submission for Examination				Inspectors Report	Adoption		
WODC LDS/AAP consultation				Issues and Options Consultation			Preferred Options Consultation			Regulation 19 Consultation						Examination					
OCGV consultation				◆ 21 st /23 rd June Public Consultation 1					Public Consultation 2					Public Consultation 3					Public Exhibition		
OCGV Stakeholder Meetings/workshops			◆ 12 th June	Stakeholder Workshop		Stakeholder Meetings		Stakeholder Forum		Stakeholder Meetings		Stakeholder Forum		Stakeholder Meetings				Stakeholder Forum			
OCGV OPA design / planning				Initial Masterplan Development		EIA Scoping		Masterplan Design Development		Design Freeze		Detailed Masterplan and EIA					Planning Assessment		OPA Submission		

A new Garden Village

Paul Comerford
AECOM

Allocated area



Government and local policy

- Garden towns and villages are one way to **meet housing shortfall**.
- They will be **distinct new places**
- West Oxfordshire District Council's Local Plan proposes the allocation
- WODC is leading on an **Area Action Plan (AAP)** to define policies and principles



Slide 14

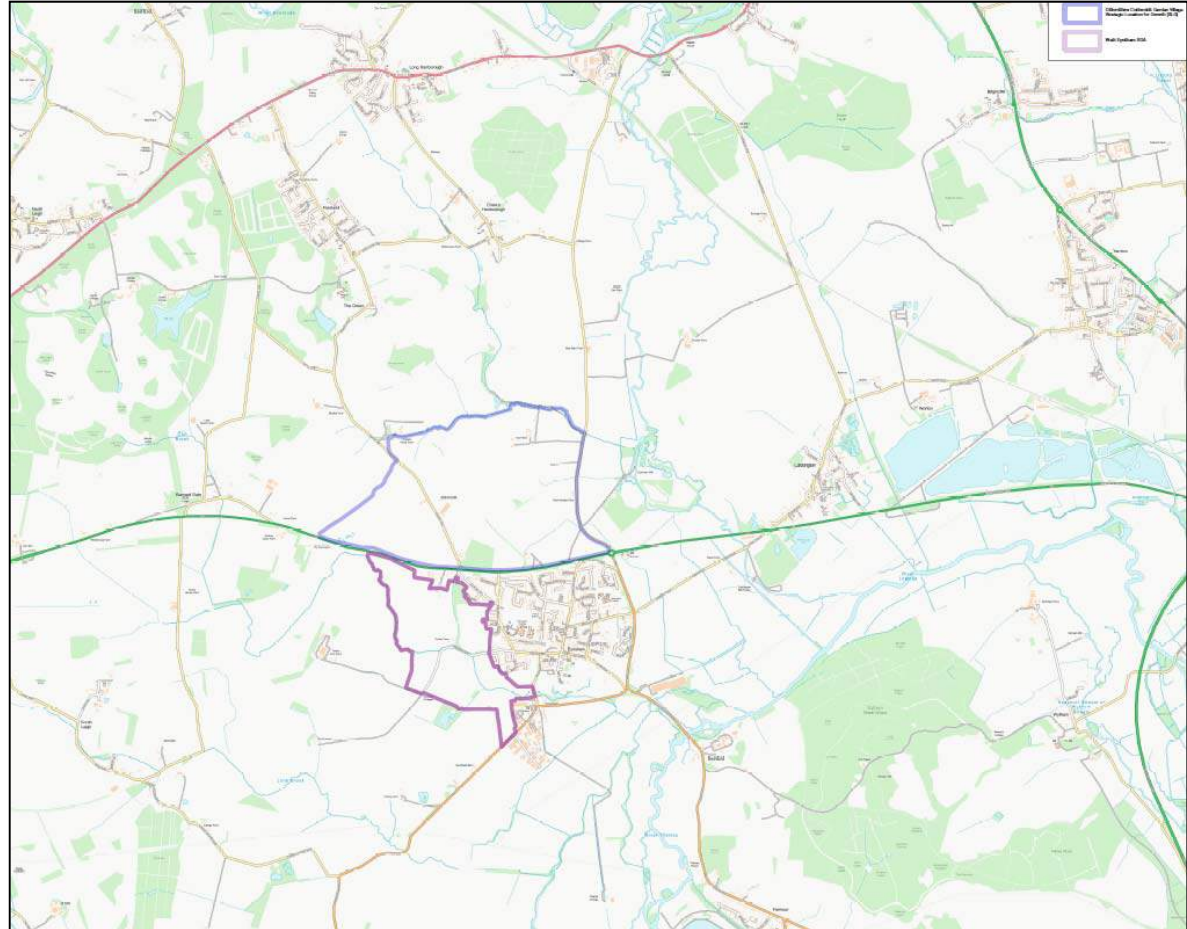
JC1

Not sure this will be needed depending on Grosvenor slides

Joe Cawley, 07/06/2018

Location

- Location close to Oxford
- On the edge of the Oxfordshire's 'knowledge spine'
- Strong local employment
- Proximity to Hanborough Station
- Park and ride
- Largely unconstrained

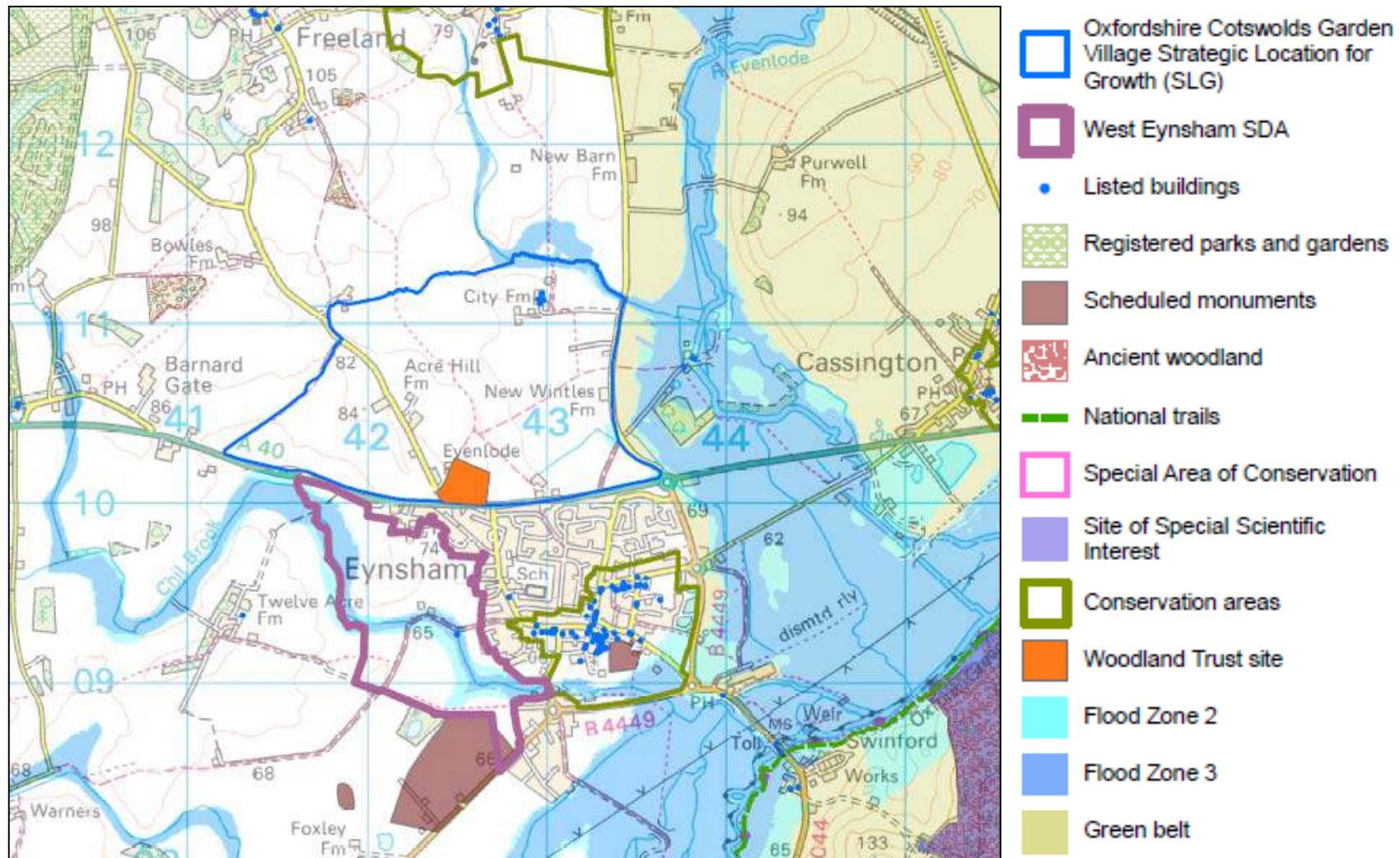


Context

Richard Burton and John Trehy
Terence O'Rourke

Simon Speller
PBA

Environmental context

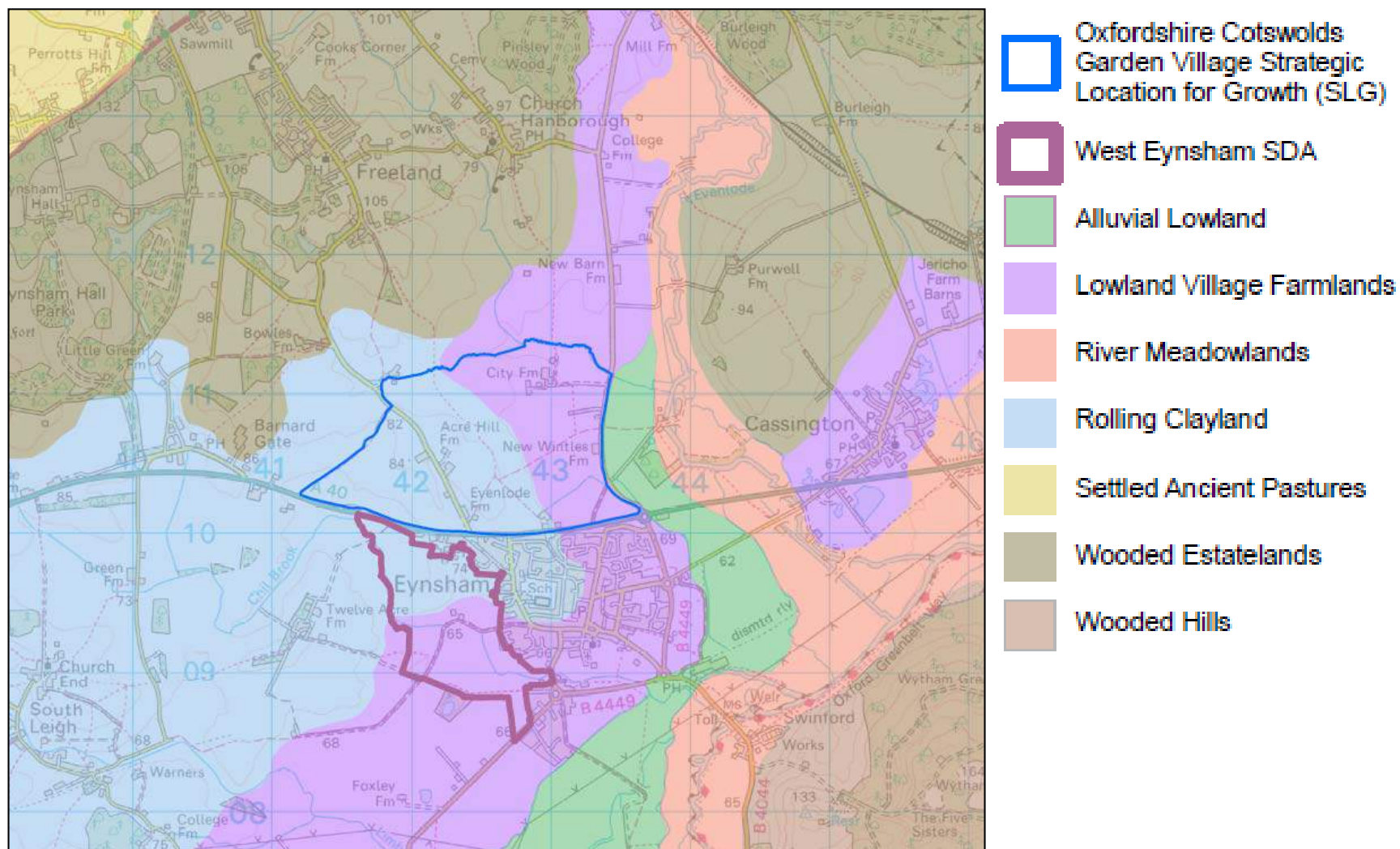


JC2

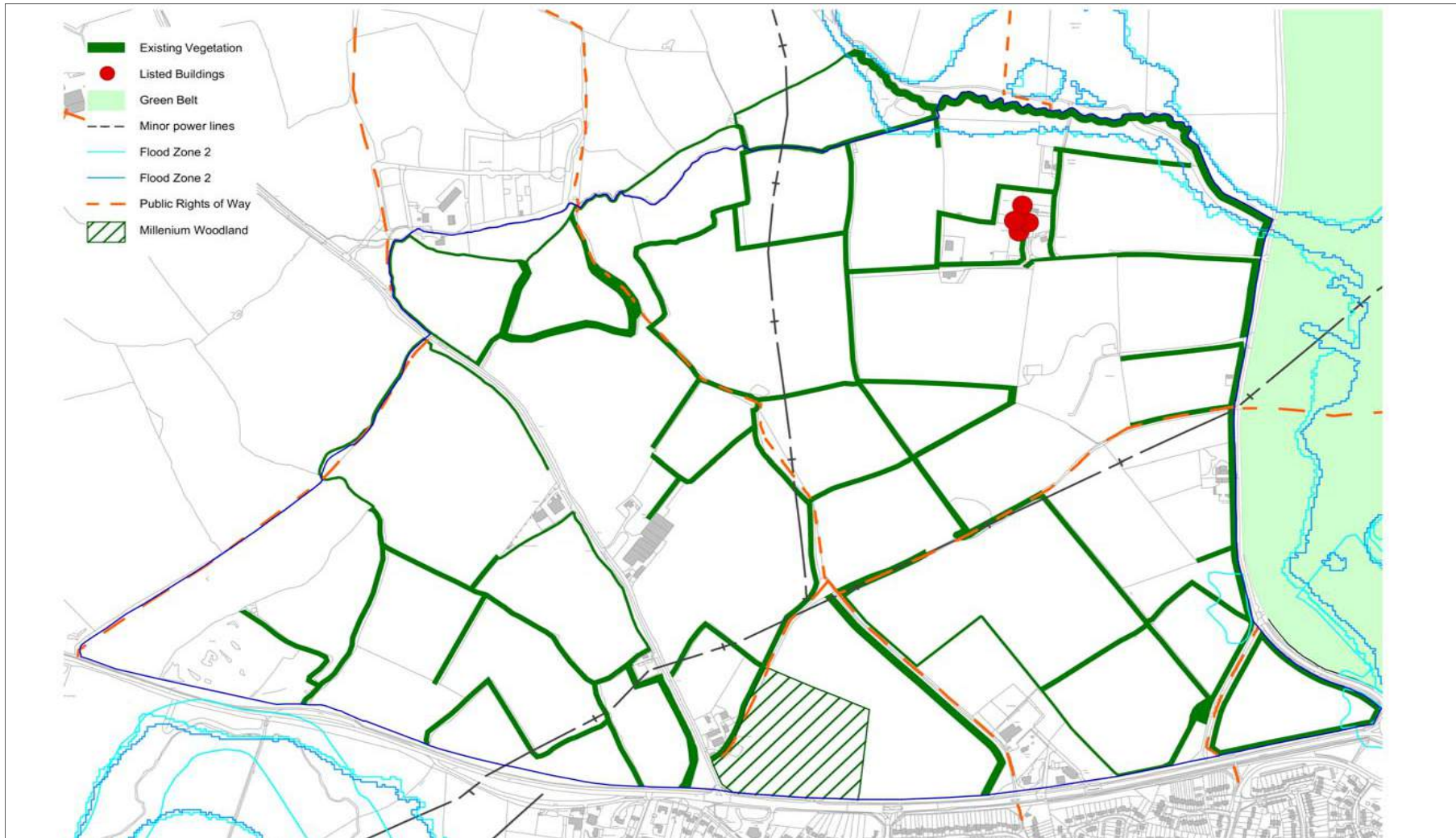
Cannot read

Joe Cawley, 07/06/2018

Landscape and green infrastructure



Site assets



Heritage



-  Oxfordshire Cotswolds Garden Village Strategic Location for Growth (SLG)
-  OCC HER sites
-  City Farm listed buildings
-  Area quarried: no archaeology remains
-  Conservation areas
-  Registered parks and gardens

Transport

Strategic constraints

- A40 and peak period congestion and off-peak speed and safety. Resilience to traffic incidents
- Swinford Toll bridge
- Limited bus priority and destinations served



Transport

Local constraints

- Land ownership on A40 and highway boundary
- Existing accesses
- Sub-standard junctions e.g. Cuckoo Lane
- Vehicular access to West Eynsham
- Committed Park & Ride access
- Committed A40 bus priority



Transport

Strategic opportunities

- Committed investment to improve cycling on A40
- A40 Park & Ride and bus priority
- Bus services to wider Oxford City (Eastern Arc)
- Hanborough Station and Cotswolds Line
- Potential £135m funding for upgrades to the A40
- Northern Gateway committed investment



Transport

Local opportunities

- Reducing need to travel through mixed land uses
- Innovations
- New pedestrian and cycling facilities
- Northern link road and Western spine road
- Shared access junctions



Making a place

Richard Burton
Terence O'Rourke

Placemaking

A place where people
belong

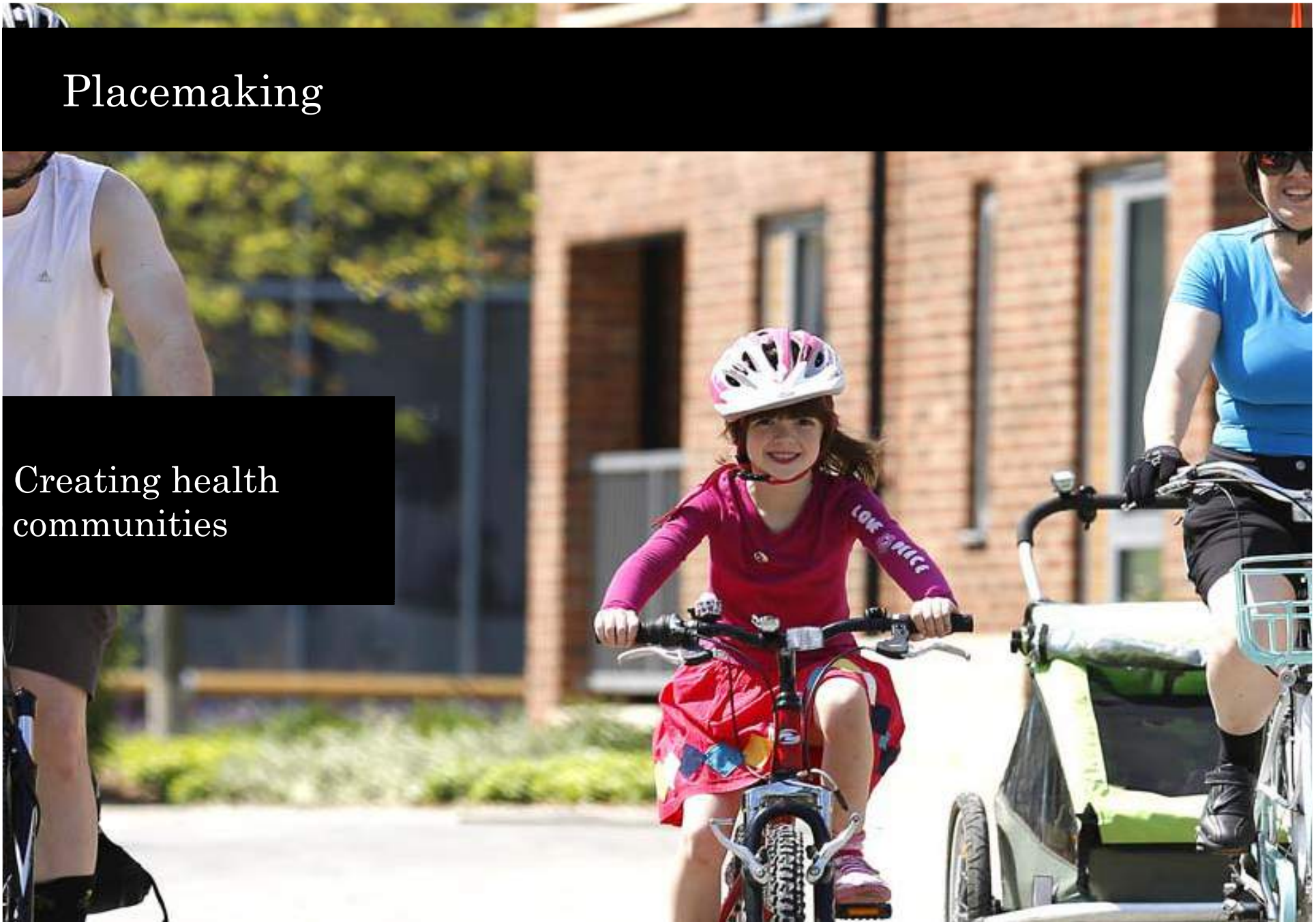


Placemaking

Employment and
local jobs

Placemaking

Creating health
communities



Placemaking

Vibrant
neighbourhoods
(culture, recreation
and shopping)



Placemaking

Protecting and
enhancing the natural
and heritage
environment

Placemaking

Sustainable mobility
and technology

Any questions?

Workshop tasks

In your groups

1. What are the core issues, current policy & influencing parameters (e.g. market & community perceptions)
2. Identify the issues and opportunities for taking the Garden Village approach forward

Workshop tasks

Open discussion

1. Governance and management [fac. Andy, Merlene]
2. Employment and enterprise [fac. Silvia, Parth]
3. Housing and community [fac. Simon Mattinson, Jas]
4. Movement and connectivity [fac. Simon Speller, Nick]
5. Quality and character [fac. Richard, Joe]
6. Retail and leisure [fac. Rupert, Carol]
7. Landscape, heritage and green infrastructure [fac. John, Jamie]
8. Community infrastructure [fac. Paul, Josh]

Any questions?

Workshop groups

Feedback and discussion

Lunch break

Discussion workshop

Based on this morning's feedback, please reflect on the following points in relation to bringing forward the Garden Village proposals:

1. Specific parameters, processes and policies to meet
2. Future demographic, policy and technology context
3. Key goals and aspirations
4. Priorities and next steps

Next steps

- Series of engagement events
- Analysis of ideas brought forward
- Upcoming events in 2018 and 2019
- Please give us feedback on today: what you liked and what we could do better

Final questions and thoughts?

Thank you for coming along
today and we welcome your
feedback on today.



GROSVENOR