



May 2019

Grosvenor Developments Ltd

Agricultural Land Classification and Soil Resources

at

Oxfordshire Cotswolds Garden Village, Eynsham

**Beechwood Court,
Long Toll, Woodcote,
RG8 0RR**

**01491 684 233
readingagricultural.co.uk**

1 Introduction

- 1.1 Reading Agricultural Consultants Ltd (RAC) is instructed by Grosvenor Developments Ltd to investigate the Agricultural Land Classification (ALC) and soil resources of land north of the A40 at Eynsham, Oxfordshire, by means of a detailed survey of soil and site characteristics.
- 1.2 Guidance for assessing the quality of agricultural land in England and Wales is set out in the Ministry of Agriculture, Fisheries and Food (MAFF) revised guidelines and criteria for grading the quality of agricultural land (1988)¹, and summarised in Natural England's Technical Information Note 049².
- 1.3 Agricultural land in England and Wales is graded between 1 and 5, depending on the extent to which physical or chemical characteristics impose long-term limitations on agricultural use. The principal physical factors influencing grading are climate, site and soil which, together with interactions between them, form the basis for classifying land into one of the five grades.
- 1.4 Grade 1 land is excellent quality agricultural land with very minor or no limitations to agricultural use, and Grade 5 is very poor quality land, with severe limitations due to adverse soil, relief, climate or a combination of these. Grade 3 land is subdivided into Subgrade 3a (good quality land) and Subgrade 3b (moderate quality land). Land which is classified as Grades 1, 2 and 3a is defined in Annex 2 of the National Planning Policy Framework³ as best and most versatile agricultural land.
- 1.5 As explained in Natural England's TIN049, the whole of England and Wales was mapped from reconnaissance field surveys in the late 1960s and early 1970s, to provide general strategic guidance on agricultural land quality for planners. This Provisional Series of maps was published on an Ordnance Survey base at a scale of One Inch to One Mile (1:63,360). The Provisional ALC map shows most of the site as undifferentiated Grade 3, with Grade 4 to the north and west, and Grade 2 to the south. However, TIN049 explains that:

¹ **MAFF (1988).** *Agricultural Land Classification of England and Wales. Revised guidelines and criteria for grading the quality of agricultural land.* MAFF Publications.

² **Natural England (2012).** *Technical Information Note 049 - Agricultural Land Classification: protecting the best and most versatile agricultural land,* Second Edition.

³ **Ministry of Housing, Communities and Local Government (2018).** *National Planning Policy Framework.*

"These maps are not sufficiently accurate for use in assessment of individual fields or development sites, and should not be used other than as general guidance. They show only five grades: their preparation preceded the subdivision of Grade 3 and the refinement of criteria, which occurred after 1976. They have not been updated and are out of print. A 1:250 000 scale map series based on the same information is available. These are more appropriate for the strategic use originally intended ..."

- 1.6 TIN049 goes on to explain that a definitive ALC grading should be obtained by undertaking a detailed survey according to the published guidelines, at an observation density of one boring per hectare. Existing detailed ALC data⁴ is available for approximately 13ha in the west of the site (shown as Area A on Figure RAC8314-1), and this survey follows the detailed methodology set out in the MAFF guidelines for the remainder of the site.

2 Site and climatic conditions

General features, land form and drainage

- 2.1 The site extends to approximately 194ha, most of which is agricultural land under grass, with some in arable use, mostly to the north. Non-agricultural land comprises a farm house and buildings in the east and north, and an area in the south-west with many mounds and hummocks that may recently have been used as a dirt bike track.
- 2.2 Topography is level to gently sloping from the highest altitude of around 85m above Ordnance Datum (AOD) roughly central to the site, falling mostly to the east and west. The lowest altitudes are around 65m AOD in the east and 70m AOD in the west.

Agro-climatic conditions

- 2.3 Agro-climatic data for the site have been interpolated from the Meteorological Office's standard 5km grid point data set at two locations at representative altitudes of 75m AOD, and are given in Table 1. The climate is temperate, with moderate rainfall and mild temperatures. Crop moisture deficits are moderate to moderately large. The Field Capacity Day regime (which estimates the duration of the period from the autumn or early winter to spring when the soil moisture deficit is zero) is slightly shorter than is typical for lowland England, which is considered to be favourable for agricultural work.

⁴ MAFF (1991). *Agricultural Land Classification, Barnard Gate, Near Freeland, Oxfordshire. Ref 3305-056-91*

Table 1: Local agro-climatic conditions

Parameter	Value	
Grid Reference	SP420101	SP423110
Average Annual Rainfall	678mm	675mm
Accumulated Temperatures >0°C	1,428 day°	1,427 day°
Field Capacity Days	147 days	147 days
Average Moisture Deficit, wheat	105mm	105mm
Average Moisture Deficit, potatoes	97mm	98mm

Soil parent material and soil type

- 2.4 The principal underlying geology mapped by the British Geological Survey⁵ across most of the site is mudstone of undifferentiated Oxford Clay and West Walton Formations. Oxford Clay is typically grey. The West Walton Formation clay may be calcareous and may include siltstones and subordinate fine-grained sandstones and limestone. There is a narrow band of the Kellaways Sand Member mapped along the eastern boundary of the site, comprising siltstone and sandstone, which separates the main bedrock from the Kellaways Clay Member, which comprises grey mudstone.
- 2.5 Aligned north to south, east of the centre of the site, is a superficial deposit of the Summertown-Radley Sand and Gravel Member. A pocket of sand and gravel of the Hanborough Gravel Member is mapped to the south of the centre, and the Northmoor Sand and Gravel Member is mapped in the east. Some deposits of alluvium are also mapped in the east and may include silt, sand, peat and gravel.
- 2.6 The Soil Survey of England and Wales soil association mapping⁶ (1:250,000 scale) shows three soil associations at the site. The Denchworth association is dominant across the western half of the site and is characterised by wet, clayey profiles which are typically waterlogged for long periods, of Wetness Class (WC) IV or V.
- 2.7 Correlating with the sand and gravel deposits is the Badsey 1 association. Profiles typically comprise clay loam topsoil and upper subsoil, overlying sandy gravel. Profiles are variably calcareous and well drained, of WC I.
- 2.8 In the south-east of the site, associated with the alluvium deposits, is the Kelmscot association, characterised by calcareous clay loam upper horizons over sandy loam lower horizons. Most of

⁵ **British Geological Survey (2019).** *Geology of Britain viewer*, <http://mapapps.bgs.ac.uk/geologyofbritain/home.html>

⁶ **Soil Survey of England and Wales (1984).** *Soils of South East England* (1:250,000), Sheet 6

the soils are permeable but are affected by groundwater and flooding, resulting in WC II to IV depending upon the severity⁷.

3 Agricultural land quality

Soil survey methods

- 3.1 In total, 167 soil profiles were examined across the site using an Edelman (Dutch) auger at an observation density of one per hectare across accessible land in accordance with the established recommendations for ALC surveys². Four observation pits were also excavated to examine subsoil structures. The locations of observations are indicated on Figure RAC8314-1, along with the area previously surveyed (Area A) and two areas (B and C) to which access was not available). At each observation point the following characteristics were assessed for each soil horizon up to a maximum of 120cm or any impenetrable layer:
- soil texture;
 - significant stoniness;
 - colour (including localised mottling);
 - consistency;
 - structural condition;
 - free carbonate; and
 - depth.
- 3.2 Seven topsoil samples were submitted for laboratory determination of particle size distribution, pH, organic matter content and nutrient contents (P, K, Mg). Results are presented in Appendix 1.
- 3.3 Soil Wetness Class (WC) was inferred from the matrix colour, presence or absence of, and depth to, greyish and ochreous gley mottling, and slowly permeable subsoil layers at least 15cm thick, in relation to the number of Field Capacity Days at the location.
- 3.4 Soil droughtiness was investigated by the calculation of moisture balance equations (given in Appendix 2). Crop-adjusted Available Profile Water (AP) is estimated from texture, stoniness and

⁷ **Jarvis et al (1984).** *Soils and Their Use in South East England*. Soil Survey of England and Wales Bulletin 15, Harpenden.

depth, and then compared to a calculated moisture deficit (MD) for the standard crops wheat and potatoes. The MD is a function of potential evapotranspiration and rainfall. Grading of the land can be affected if the AP is insufficient to balance the MD and droughtiness occurs.

Agricultural land classification and site limitations

- 3.5 Assessment of land quality has been carried out according to the MAFF revised ALC guidelines (1988)¹. Soil profiles have been described according to Hodgson (1997)⁸ which is the recognised source for describing soil profiles and characteristics according to the revised ALC guidelines.
- 3.6 Agricultural land quality at this site is most affected by soil wetness or droughtiness, with localised areas limited by topsoil stone content. Most of the site is limited to Subgrade 3b, with large areas of Subgrade 3a and Grade 2 predominantly in the east.
- 3.7 Three main soil types have been identified.
- 3.8 Profiles of the main soil type are identified in the western part of the site and mostly comprise heavy clay loam topsoil, with heavy silty clay loam, medium clay loam and clay textures also present. Occasionally in the south of the site there is a thin surface horizon containing the grass root mat in which organic matter content is higher than in the main topsoil.
- 3.9 The average topsoil depth is 28cm and the colour is mostly greyish to dark greyish brown, or brown (10YR4/2, 4/3, 5/2, 5/3 in the Munsell soil colour charts⁹). Most is stoneless to very slightly stony, although there are localised patches where stone content is higher (up to around 15% by volume in total), although not limiting to ALC.
- 3.10 The topsoil is firm but has a moderately well developed, medium to coarse subangular blocky structure with common roots and pores. The topsoil is typically non-calcareous.
- 3.11 Upper subsoil of the main soil type comprises clay or occasionally heavy clay loam which is most commonly brown or light olive brown (10YR5/3 or 2.5YR5/3). The stone content continues to be low. Ochreous mottles indicate periods of intermittent waterlogging, although roots may be present. The upper subsoil structure is weakly developed with fine angular blocky peds in the south, and coarse angular in the north, and which is in some places is slightly compacted. Permeability is poor.

⁸ **Hodgson, J. M. (Ed.) (1997).** *Soil survey field handbook*. Soil Survey Technical Monograph No. 5, Silsoe.

⁹ **Munsell Color (2009).** *Munsell Soil Color Book*. Grand Rapids, MI, USA

- 3.12 Lower subsoil commonly comprises greyish or greenish grey (including 2.5Y6/1, 10Y6/1 or 5GY5/1) clay which is prominently mottled and very firm, with a coarse angular blocky structure (shown in photographs in Appendix 3). The profiles are poorly drained, of WC IV, or occasionally of WC III, resulting in a wetness and workability limitation to Subgrade 3b.
- 3.13 Comparable observations were reported in the existing survey data available in the west of the site, which classified the field as Subgrade 3b.
- 3.14 A small area to the north of the site within this soil type has been classified as Grade 4 as it is characterised by wetland juncus reeds and was severely waterlogged to the surface at the time of survey.
- 3.15 The second main soil type is identified in the south and east of the site. Topsoil is of slightly stony, brown (10YR4/3) medium clay loam which is variably calcareous. The average thickness is 28cm. The consistency was friable to very friable at the time of survey, with a fine subangular blocky structure.
- 3.16 This overlies a typical upper subsoil of brown (10YR5/3) heavy clay loam which is friable to firm. Ochreous mottles and ferrimanganiferous concretions, which also indicate wetness in the soil, are common and the horizons are considered to be gleyed.
- 3.17 Lower subsoil is commonly clay or heavy clay loam, although there are instances of sandy clay loam and medium clay loam. The colour continues to be mostly brown (10YR5/3) and is gleyed. Stone content is low. The consistency is slightly firm but the moderately well developed structure ensures the profiles remain permeable. Most of the profiles of this soil type are of WC II, with minor variations resulting in instances of WC I or III. Profiles of WC II with medium clay loam topsoil are limited slightly by wetness and workability to Grade 2. Profiles of WC I have little to no limitation to their agricultural use and are of Grade 1, whilst the single profile of WC III is limited to Subgrade 3a. However these occurrences are isolated and do not form coherent units, and therefore have been amalgamated into the surrounding Grade 2.
- 3.18 The third soil type identified correlates with the principal mapped superficial sand and gravel deposits, south of the centre of the site. The topsoil comprises dark greyish brown or brown (10YR4/2 or 4/3) heavy clay loam, with instances of medium clay loam and clay, which is most commonly calcareous. The average thickness is 31cm. The topsoil stone content is variable, ranging from around 10 to 25% in total. This commonly includes larger stones (larger than 2cm) which have the potential to hinder agricultural operations.

- 3.19 The topsoil structure is typically moderately well developed with medium angular or subangular blocky peds although some bigger clods are also observed.
- 3.20 Upper subsoil is often brown (10YR4/3 or 5/3) clay, with localised heavy clay loam and sandy clay loam. The upper subsoil is commonly mottled. Stone content increases and ranges from around 15% to 40%. The structure is moderately to weakly developed although is fine angular blocky, or medium granular where sandy clay loam.
- 3.21 The stone content increases with depth, such that in most profiles the lower subsoil was not able to be observed as the soil became impenetrable to auger. The top of the lower subsoil horizon was observed in two pits excavated in this soil type, from which the stone content has been estimated at around 60% by volume comprising stones of variable size. The assessment of lower subsoil conditions in those profiles not able to be observed has been assumed. Where there was slight sandiness detected at the lower reaches of the auger, the profile has been assumed to include an extremely stony sandy loam at depth, in accordance with the mapped soil type.
- 3.22 The large volume of stones in these profiles significantly reduces the capacity for water storage in the profile, resulting in droughtiness limitations to Grade 2 or Subgrade 3a. In several profiles, topsoil stone content is equally limiting.
- 3.23 The areas of each ALC grade of land on the site are given in Table 2 and are shown in Figure RAC8314-2. Photographs taken at the site are given in Appendix 3.

Table 2: Agricultural land classification

Grade	Description	Area (ha)	% of agri land
2	Very good quality	34.5	18
3a	Good quality	23.0	12
3b	Moderate quality	131.8	69
4	Poor quality	0.7	1
Total Agricultural		190	100
Non-Agricultural		4.5	-

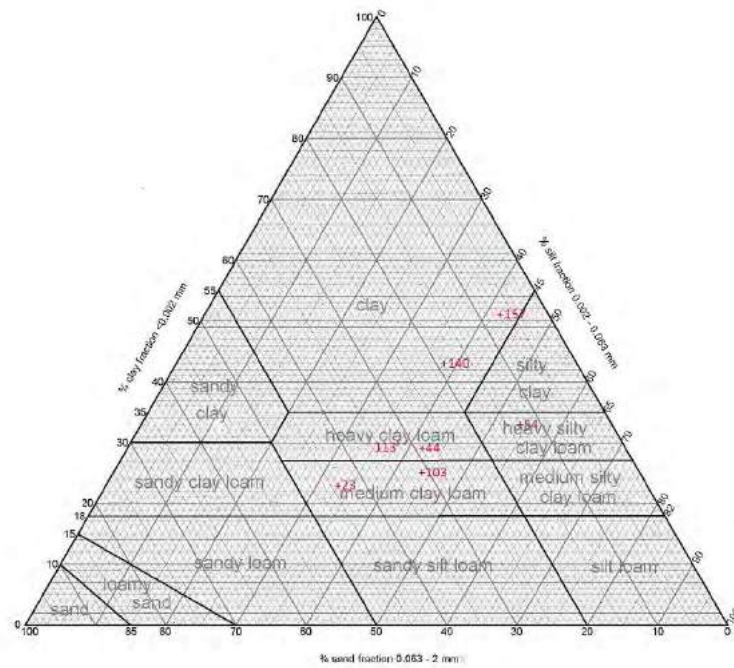
Appendix 1: Laboratory Data

Determinand	Site 23	Site 44	Site 54	Site 103	Site 113	Site 140	Site 157	Units
Sand 2.00-0.063 mm	44	29	13	31	32	19	7	% w/w
Silt 0.063-0.002 mm	33	42	54	44	39	38	42	% w/w
Clay <0.002 mm	23	29	33	25	29	43	51	% w/w
Organic Matter	2.7	3.8	7.1	5.0	3.1	5.0	9.2	% w/w
Texture	Medium Clay Loam	Heavy Clay Loam	Heavy Silty Clay Loam	Medium Clay Loam	Heavy Clay Loam	Clay	Clay	

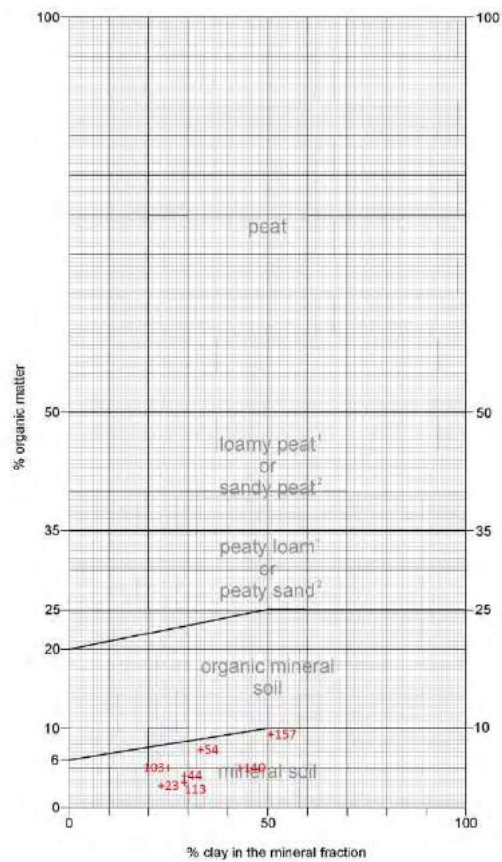
Determinand	Site 23	Site 44	Site 54	Site 103	Site 113	Site 140	Site 157	Units
Soil pH	6.7	7.4	6.9	7.9	8.1	8.4	7.5	
Phosphorus (P)	5.6	6.0	8.0	3.8	33.0	6.0	15.2	Mg/l (av)
Potassium (K)	106	134	98.7	80.2	180	127	209	Mg/l (av)
Magnesium (Mg)	56.5	57.8	78.8	59.6	47.8	192	152	Mg/l (av)

Determinand	Site 23	Site 44	Site 54	Site 103	Site 113	Site 140	Site 157	Units
Phosphorus (P)	0	0	0	0	3	0	1	ADAS Index
Potassium (K)	1	2-	1	1	2-	2-	2+	ADAS Index
Magnesium (Mg)	2	2	2	2	1	4	3	ADAS Index

Soil Texture by Particle Size Analysis



Organic Matter Class



¹ Less than 50% sand in the mineral fraction

² 50% sand or more in the mineral fraction

Appendix 2: Soil Profile Summaries and Droughtiness Calculations

Wetness / workability limitations are determined according to the methodology given in Appendix 3 of the ALC guidelines, MAFF 1988

Droughtiness calculations are made according to the methodology given in Appendix 4 of the ALC guidelines, MAFF 1988.

Grades are shown for drought, wetness and any other soil or site factors which are relevant. The overall Grade is set by the most limiting factor and shown on the right.

Stone types		
%	TAv	Eav
hard	1	0.5
chalk	10	7

hard flint & pebble

Climate Data	
MDwheat	105
MDpotato	97
FCD	147

Wetness Class Guidelines	II	III	IV	V
SPL within 80cm, gleying within 40cm	>67cm	40-67cm	<40cm	
SPL within 80cm, gleying at 40-70cm	>51cm	<51cm		
No SPL but gleying within 40cm	coarse subsoil	I	other cases	II

Maximum depth of auger penetration is underlined

Site No.		Depth cm		Texture	CaCO ₃	Colour	Mottle colour	abundance	stone% hard	stone% chalk	Structure	APwheat mm	AP potato mm	Gley	SPL	WC	Wetness grade WE	Final Grade	Limiting Factor(s)
1	T	0	26	hZCL		10YR5/3	Fe	com	1			49	49	y		IV	3b	3b	WE
		26	35	ZC		2.5Y5/3	Fe	com	15		poor	9	9	y	y				
		35	70	ZC		2.5Y5/3	Fe	com	2		poor	31	41	y	y				
		70	120	ZC		2.5Y6/1	Fe	com.	0		poor	35	0	y	y				
										Total	125	99							
										MD	20	2							
		Droughtiness grade (DR)											2	2					
2	T	0	30	hZCL		10YR5/3			10		-	52	52			IV	3b	3b	WE
		30	50	C		2.5Y5/3	Fe	com	10		poor	24	24	y	y				
		50	120	C		2.5Y6/1	Fe	com	1		poor	49	26	y	y				
										Total	124	101							
										MD	19	4							
		Droughtiness grade (DR)											2	2					
3	T	0	25	hCL		10YR5/3			10		-	52	52			IV	3b	3b	WE
		25	80	C		2.5Y5/3	Fe	com	10		poor	24	24	y	y				
		80	120	C		2.5Y6/1	Fe	com	1		poor	49	26	y	y				
										Total	124	101							
										MD	19	4							
Droughtiness grade (DR)											2	2							
4	T	0	35	mCL		10YR5/2			10		-	57	57			III	3a	3a	WE

		35	42	mCL	10YR5/2			15		10	10						
		42	70	C	2.5Y5/3	Fe	com	0	poor	24	36	y	y				
		70	120	C	2.5Y6/1	Fe	com	0	poor	35	0	y	y				
									Total	126	103						
									MD	21	6						
									Droughtiness grade (DR)	2	2						
5	T	0	35	hCL	2.5Y4/3			15	-	54	54			IV	3b	3b	WE
		35	80	C	2.5Y5/3	Fe	com	0	poor	41	46	y	y				
		80	120	C	2.5Y6/1	Fe	com	0	poor	28	0	y	y				
									Total	123	100						
									MD	18	3						
									Droughtiness grade (DR)	2	2						
6	T	0	35	hCL	2.5Y4/3			10	-	57	57			IV	3b	3b	WE
		35	65	C	2.5Y5/3	Fe	com	0	poor	30	39	y	y				
		65	120	C	2.5Y6/1	Fe	com	0	poor	39	7	y	y				
									Total	126	103						
									MD	21	6						
									Droughtiness grade (DR)	2	2						
7	T	0	40	hCL	10YR4/3			15	-	62	62			III	3b	3b	WE
		40	70	C	10YR5/3	FeMn	many	15	poor	23	34	y	y				
		70	90	C	10YR5/3	FeMn	many	25	poor	11	0	y	y				
		90	120	C	10YR5/3	FeMn	many	10	poor	19	0	y	y				
									Total	115	95						
									MD	10	-2						
									Droughtiness grade (DR)	2	2						
8	T	0	40	hCL	10YR5/3	FeMn	com	18	-	60	60	y		III	3b	3b	WE
		40	90	C	2.5Y5/3	Fe	many	1	poor	41	39	y	y				
		90	120	C	10Y7/	Fe	com	0	poor	21	0	y	y				
									Total	121	98						
									MD	16	1						
									Droughtiness grade (DR)	2	2						
9	T	0	30	hCL	10YR5/3			25	-	41	41			III	3b	3b	WE
		30	85	C	2.5Y5/4	Fe	com	1	poor	50	52		y				
		85	120	C	10Y7/	Fe	com	0	poor	25	0	y	y				

										Total	116	93				
										MD	11	-4				
										Droughtiness grade (DR)		2	2			
10	T	0	30	mCL	10YR4/3			30	-	39	39		IV	3b	3b	WE
		30	65	C	2.5Y5/3	Fe	com	1	poor	36	45	y y				
		65	80	SC	2.5Y6/3	Fe	com	1	poor	12	6	y y				
		80	120	SC	10Y7/	Fe	com	1	poor	32	0	y y				
										Total	118	90				
										MD	13	-7				
										Droughtiness grade (DR)		2	2			
11	T	0	35	hCL	10YR4/2	Fe	few	1	-	39	39		III	3b	3b	WE
		35	50	C	2.5Y5/4	Fe	com	1		36	45	y				
		50	80	C	2.5Y5/4	Fe	com	1		12	6	y				
		80	120	C	10Y7/	Fe	com	1	poor	32	0	y y				
										Total	118	90	Evidence of wetness from surface, but permeable. Area generally wet - juncus and pond. Assume GW and WC III			
										MD	13	-7				
										Droughtiness grade (DR)		2	2			
12	T	0	26	hCL	10YR4/2			1	-	46	46		III	3b	3b	WE
		26	70	C	2.5Y5/4	Fe	com	1		54	70					
		70	120	C	10YR4/4	Fe	com	30	poor	25	0	y				
											Total	125	116	Moist at surface, GW at 70		
										MD	20	19				
										Droughtiness grade (DR)		2	1			
13	T	0	30	mCL	10YR4/2			1	-	53	53		IV	3b	3b	WE
		30	36	hCL	2.5Y5/3	Fe	com	25		7	7	y				
		36	90	C	2.5Y5/2	Fe	com	0	poor	46	44	y y				
		90	120	LfS	10Y7/	Fe	com	0		39	0	y				
										Total	146	105	GW at 50cm			
										MD	41	8				
										Droughtiness grade (DR)		1	2			
14	T	0	30	mCL	10YR4/3			20	-	44	44		II	2	2	WE
		30	65	mCL	10YR4/3	Fe	com	2		46	55					
		65	120	C	10YR4/4	FeMn	com	2		43	8					
										Total	133	107	GW. WC based on Table 11			

										MD	28	10					
										Droughtiness grade (DR)	2	2					
15	T	0	30	hCL	10YR4/2			25	-	41	41			IV	3b	3b	WE
		30	35	hCL	10YR4/2			35		5	5						
		35	65	C	2.5Y5/3	FeMn	com	2	poor	29	38	y	y				
		65	120	C	10Y7/	Fe	com	0	poor	39	7	y	y				
								Total		115	91						
								MD		10	-6						
										Droughtiness grade (DR)	2	2					
16	T	0	30	hCL	10YR4/3			5	-	51	51			IV	3b	3b	WE
		30	50	C	2.5Y5/4	FeMn	com	1	poor	26	26	y					
		50	120	C	2.5Y5/3	FeMn	many	5	poor	47	25	y	y				
								Total		124	102						
								MD		19	5						
												Droughtiness grade (DR)	2				
17	T	0	35	hCL	10YR4/3			5	-	60	60			IV	3b	3b	WE
		35	120	C	10YR6/3	FeMn	com	1	poor	68	45	y y					
								Total		128	105						
								MD		23	8						
										Droughtiness grade (DR)	2	2					
18	T	0	38	hCL	10YR4/3			5	-	65	65			IV	3b	3b	WE
		38	45	C	2.5Y5/4	Fe	com	10	poor	8	8	y					
		45	60	C	2.5Y6/1	Fe	many	0	poor	14	20	y	y				
		60	120	C	10Y7/	Fe	com	0	poor	42	13	y	y				
								Total		129	106						
								MD		24	9						
										Droughtiness grade (DR)	2	2					
19	T	0	32	hCL	10YR4/3			5	-	55	55			IV	3b	3b	WE
		32	65	C	2.5Y5/3	Fe	com	0	poor	34	43	y y					
		65	120	C	2.5Y6/1	Fe	many	0	poor	39	7	y	y				
								Total		127	104						
										MD		22	7				
										Droughtiness grade (DR)	2	2					
20	T	0	30	hCL	10YR4/3			20	-	44	44			IV	3b	3b	WE

		30	100	C	10YR5/3	Fe	many	15	poor	53	45	y	y				
		<u>100</u>	120	C	10YR5/3	Fe	many	15	poor	12	0	y	y				
									Total	108	89						
									MD	3	-8						
					Droughtiness grade (DR)					3a	2						
21	T	0	35	hCL	10YR4/3			10	-	57	57			IV	3b	3b	WE
		35	70	C	2.5Y5/3	Fe	com	15	poor	29	39	y	y				
		<u>70</u>	120	C	2.5Y5/3	Fe	com	15	poor	30	0	y	y				
									Total	116	96						
									MD	11	-1						
					Droughtiness grade (DR)					2	2						
22	T	0	35	hCL	10YR4/3			10	-	57	57			IV	3b	3b	WE
		35	120	C	2.5Y5/3	Fe	com	0	poor	69	46	y	y				
									Total	126	103						
									MD	21	6						
					Droughtiness grade (DR)					2	2						
23/P1	T	0	30	mCL	10YR4/2			5	-	51	51			IV	3b	3b	WE
		30	90	C	2.5Y5/3	Fe	com	5	poor	52	50	y	y				
		<u>90</u>	120	C	2.5Y5/3	Fe	com	15	poor	18	0	y	y				
									Total	121	101			GW at 45cm			
									MD	16	4						
					Droughtiness grade (DR)					2	2						
24	T	0	30	hCL	10YR4/2			5	-	51	51			IV	3b	3b	WE
		30	45	C	2.5Y5/3	Fe	com	35	poor	13	13	y	y				
		<u>45</u>	80	C	2.5Y5/3	Fe	com	35	poor	19	22	y	y				
		80	120	C	10Y7/	Fe	com	5	poor	27	0	y	y				
									Total	110	87						
									MD	5	-10						
					Droughtiness grade (DR)					2	3a						
25	T	0	30	hCL	10YR4/3			5	-	51	51			IV	3b	3b	WE
		30	90	C	2.5Y5/3	Fe	com	5	poor	52	50	y	y				
		90	120	C	10Y7/	Fe	com	15	poor	18	0	y	y				
									Total	121	101						
									MD	16	4						

Droughtiness grade (DR)														2	2								
26	T	0	35	hCL	10YR4/3 2.5Y5/3-4	Fe	com	5	-	60	60	y/n	y	IV	3b	3b	WE						
		35	120	C				5	poor	65	43												
										Total	125	103											
										MD	20	6											
		Droughtiness grade (DR)																2	2				
27	T	0	35	hCL	10YR4/3 10Y4/1 10Y4/1	Fe	com	12	-	56	56	y	y	IV	3b	3b	WE						
		35	75	C				2	poor	36	45												
		75	120	C				5	poor	30	0	y	y					Standing surface water in vicinity					
										Total	122	101											
										MD	17	4											
Droughtiness grade (DR)														2	2								
28	T	0	40	hCL	10YR4/3 2.5Y5/3 10YR5/1	FeMn	com	5	-	69	69	y	y	III	3b	3b	WE						
		40	70	C				15	poor	23	34												
		70	120	C				2	poor	34	0	y	y										
										Total	126	102											
										MD	21	5											
Droughtiness grade (DR)														2	2								
29	T	0	45	hCL	10YR4/3 10YR5/1 10YR5/1	FeMn	com	5	-	77	77	y	y	I	2	2	WE						
		45	75	SCL				35		22	25												
		75	120	SCL				40		28	0	y	Possibly disturbed										
										Total	127	102											
										MD	22	5											
Droughtiness grade (DR)														2	2								
30	T	0	35	hCL	10YR4/3 10YR5/1 10YR5/1	FeMn	com	5	-	60	60	y	y	II	3a	3a	WE						
		35	50	SCL				35		15	15												
		50	120	C				35		38	22	y	Possibly disturbed										
										Total	113	97											
										MD	8	0											
Droughtiness grade (DR)														2	2								
31	T	0	35	hCL	10YR4/3 10YR4/3 10YR5/1 10YR5/1	FeMn	com	5	-	60	60	y	y	I	2	2	WE						
		35	50	hCL				5		23	23												
		50	65	SCL				35		10	15	y											
		65	120	SCL				40		34	5	y											

										Total	127	103	Possibly disturbed			
										MD	22	6				
										Droughtiness grade (DR)	2	2				
32	T	0	25	mCL		10YR4/3			5	-	43	43	IV	3b	3b	WE
		25	75	C		2.5Y5/3	Fe	com	1	poor	50	58	y	y		
		75	90	C		2.5Y5/3	FeMn	com	15	poor	9	0	y	y		
		90	120	C		2.5Y5/3	Fe	com	30	poor	15	0	y	y		
										Total	117	101	GW at 40cm			
										MD	12	4				
										Droughtiness grade (DR)	2	2				
33	T	0	30	mCL		10YR4/3			5	-	51	51	IV	3b	3b	WE
		30	90	C		10YR5/3	Fe	com	1	poor	54	52	y	y		
		90	120	C		2.5Y5/6	FeMn	com	1	poor	21	0	y	y		
										Total	126	103				
										MD	21	6				
										Droughtiness grade (DR)	2	2				
34	T	0	40	mCL		10YR4/3			5	-	69	69	I	1	1	
		40	90	mCL		10YR5/4	Fe	com	1		55	48				
		90	120	C		10YR5/3	FeMn	com	10	poor	19	0	y	y		
										Total	143	116				
										MD	38	19				
										Droughtiness grade (DR)	1	1				
35	T	0	20	mCL		10YR4/3			5	-	34	34	II	2	3a	DR
		20	50	C	y	10YR6/3	Fe	com	40		30	30	y			
		50	120	C	y	10YR6/3	Fe	com	45		32	19	y			
										Total	97	83				
										MD	-8	-14				
										Droughtiness grade (DR)	3a	3a				
36	T	0	15	mCL		10YR4/3			5	-	26	26	II	2	2	WE DR
		15	75	C	y	10YR5/3	Fe	com	15		65	76	y			
		75	120	C	y	10YR6/3	Fe	com	15		31	0	y			
										Total	122	101				
										MD	17	4				
										Droughtiness grade (DR)	2	2				

37	T	0	20	mCL		10YR4/3			5	-	34	34		//	2	2	WE DR
		20	90	C	y	10YR5/3	Fe	com	15		69	69	y				
		90	120	C	y	10YR6/3	Fe	com	40		15	0	y				
		Total									118	103					
		MD									13	6					
Droughtiness grade (DR)											2	2					
38	T	0	25	mCL		10YR4/3			5	-	43	43		/	1	1	
		25	50	hCL		10YR4/3	Fe	com	1		40	40					
		50	120	C		10YR4/4	Fe	com	0		56	32					
		Total									138	115					
		MD									33	18					
Droughtiness grade (DR)											1	1					
39	T	0	20	mCL		10YR4/3			5	-	34	34		//	2	3a	DR
		20	50	C	y	10YR6/3	Fe	com	45		28	28	y				
		50	120	C	y	10YR6/3	Fe	com	45		32	19	y				
		Total									94	81					
		MD									-11	-16					
Droughtiness grade (DR)											3a	3a					
40	T	0	30	mCL		10YR4/3			5	-	51	51		//	2	3a	DR
		30	50	C	y	10YR6/3	Fe	com	35		22	22	y				
		50	120	C	y	10YR6/3	Fe	com	45		32	19	y				
		Total									105	91					
		MD									0	-6					
Droughtiness grade (DR)											3a	2					
41	T	0	25	mCL		10YR4/3			30	-	32	32		/	1	3a	DR
		25	45	C	y	10YR6/3			40		20	20					
		50	120	C	y	10YR6/3	Fe	com	45		37	23	y				
		Total									89	75					
		MD									-16	-22					
Droughtiness grade (DR)											3a	3a					
42	T	0	25	mCL		10YR4/2			5	-	43	43		IV	3b	3b	WE
		25	85	C		10YR5/2	Fe	com	5	poor	54	56	y y				
		50	120	C		10YR5/3	Fe	com	20	poor	20	0	y y				
		Total									117	99					
		MD															

										MD	12	2					
										Droughtiness grade (DR)	2	2					
43	T	0	25	mCL	10YR3/2			5	-	43	43		II	2	3b	FL	
		25	70	hCL	10YR4/2	Fe	com	10		54	65	y					
		70	80	C	2.5Y6/1	Fe	com	10	poor	6	0	y	y				
		80	120	C	2.5Y6/1	Fe	com	10	poor	25	0	y	y				
										Total	129	108	FZ 3				
										MD	24	11					
										Droughtiness grade (DR)	2	1					
44	T	0	25	hCL	10YR4/2			10	-	41	41		III	3b	3b	WE	
		25	45	hCL	10YR4/3	FeMn	com	1		32	32						
		45	120	C	10YR5/3	Fe	com	5	poor	53	31	y	y				
										Total	125	103					
												MD	20				6
										Droughtiness grade (DR)	2	2					
45	T	0	30	mCL	10YR4/3			20	-	44	44		III	3a	3a	WE DR	
		30	45	C	10YR6/3	FeMn	com	25		18	18						
		45	120	C	10YR6/3	Fe	com	25	poor	43	25	y	y				
										Total	105	87					
												MD	0				-10
										Droughtiness grade (DR)	3a	2					
46	T	0	30	mCL	10YR4/3			20	-	44	44		III	3a	3a	WE DR	
		30	45	C	10YR6/3	FeMn	com	25		18	18						
		45	120	C	10YR6/3	Fe	com	25	poor	43	25	y	y				
										Total	105	87					
												MD	0				-10
										Droughtiness grade (DR)	3a	2					
47	T	0	20	mCL	10YR4/3			20	-	29	29		III	3a	3a	WE DR	
		20	60	C	10YR5/3	FeMn	com	25		43	49	y					
		60	120	C	10YR6/3	Fe	com	30	poor	30	9	y	y				
										Total	102	88					
												MD	-3				-9
										Droughtiness grade (DR)	3a	2					
48	T	0	20	hCL	10YR4/2	Fe	few	0	-	36	36		IV	3b	3b	WE	

20	65	C	2.5Y5/4	Fe	com	10	poor	45	53	(y)	y
65	90	C	10Y6/1	Fe	com.	10	poor	16	6	y	y
<u>90</u>	120	C	10Y6/1	Fe	com	10	poor	19	0	y	y
Total								116	95		
MD								11	-2		
Droughtiness grade (DR)								2	2		

49	T	0	20	hCL	10YR4/2			0		36	36			IV	3b	3b	WE
		20	35	C	2.5Y5/3	Fe	com.	0	poor	20	20	y	y				
		35	120	C	10Y6/1	Fe	com.	0	poor	69	46	y	y				
		Total								124	101						
		MD								19	4						
Droughtiness grade(DR)										2	2						
50	T	0	15	hZCL	10YR4/3			10	-	26	26			IV	3b	3b	WE
		15	35	C	2.5Y5/3	Fe	com	15	poor	22	22	y	y				
		35	100	C	2.5Y6/4	Fe	com	15	poor	47	39	(y)	y				
		100	120	C	2.5Y5/3	Fe	com	35	poor	9	0	y	y				
		Total								105	87						
MD								0	-10								
Droughtiness grade(DR)										3a	2						
51	T	0	30	hCL	10YR4/2			0	-	54	54			IV	3b	3b	WE
		30	90	hCL	10YR5/3	Fe	com	10	m/poor	56	51	y	y				
		90	120	C	10Y6/1	Fe	com	0	poor	21	0	y	y				
		Total								131	105						
		MD								26	8						
Droughtiness grade(DR)										2	2						
52	T	0	35	hCL	10YR4/2	Fe	com	0	-	63	63			II	3a	3a	WE
		35	90	C	2.5Y5/3	Fe	com	0		56	56	y					
		90	120	C	10Y6/1	Fe	com	0	poor	21	0	y	y				
		Total								140	119						
		MD								35	22						
Droughtiness grade(DR)										1	1						
53	T	0	25	C	10YR4/3	Fe	com	0	-	43	43			IV	3b	3b	WE
		25	45	C	10YR5/3	Fe	com	0	poor	26	26	y	y				
		45	120	C	10Y6/1	Fe	com	5	poor	53	31	y	y				

										Total	121	100					
										MD	16	3					
										Droughtiness grade(DR)	2	2					
54	T	0	18	hZCL	10YR4/3	Fe	com	0	-	32	32		IV	3b	3b	WE	
		18	35	C	10YR5/3	Fe	com	0		27	27	y					
		35	120	C	2.5Y5/3	Fe	com	5	poor	65	43	y					y
										Total	125	103					
										MD	20	6					
										Droughtiness grade(DR)	2	2					
55	T	0	20	hCL	10YR5/3	Fe	com	0	-	36	36	y	III	3b	3b	WE	
		20	50	C	10YR5/3	Fe	com	10		44	44	y					
		50	80	C	2.5Y5/3	Fe	com	10	poor	19	24	y					y
		80	120	C	10Y6/1	Fe	com	0	poor	28	0	y					y
										Total	127	103					
										MD	22	6					
										Droughtiness grade(DR)	2	2					
56	T	0	25	mCL	10YR4/3	Fe	com	0	-	45	45		IV	3b	3b	WE	
		25	80	C	2.5Y5/3	Fe	com	0	poor	54	59	y					y
		80	120	C	10Y6/1	Fe	com	0	poor	28	0	y					y
										Total	126	104					
										MD	21	7					
										Droughtiness grade(DR)	2	2					
57	T	0	15	hCL	10YR5/3	Fe	com	0	-	27	27		IV	3b	3b	WE	
		15	60	C	2.5Y5/3	Fe	com	0	poor	53	59	y					y
		60	120	C	10Y6/1	Fe	com	0	poor	42	13	y					y
										Total	122	99					
										MD	17	2					
										Droughtiness grade(DR)	2	2					
58	T	0	28	mCL	10YR4/2			5	-	48	48		II	2	2	WE DR	
		28	65	hCL	10YR4/4	FeMn	com	25		38	45						
		65	120	C	2.5Y6/1	Fe	com	0	poor	39	7	y					y
										Total	125	100					
										MD	20	3					
										Droughtiness grade(DR)	2	2					

59	T	0	20	mZCL	10YR4/2			0	-	38	38			III	3a	3a	WE
		20	50	C	2.5Y5/3	Fe	com	0		48	48	y					
		50	120	C	10Y6/1	Fe	com	0	poor	49	26	y	y				
									Total	135	112						
									MD	30	15						
									Droughtiness grade(DR)	1	1						
60	T	0	25	mCL	10YR4/2			2	-	44	44			IV	3b	3b	WE
		25	45	C	2.5Y5/3	Fe	com	0	poor	26	26	y	y				
		45	120	C	10Y6/1	Fe	com	0	poor	56	33	y	y				
									Total	126	103						
									MD	21	6						
									Droughtiness grade(DR)	2	2						
61	T	0	35	hCL	10YR4/3			2	-	62	62			II	3a	3a	WE
		35	65	C	2.5Y5/3	Fe	few	10		33	44						
		65	80	C	2.5Y5/3	Fe	com	0	poor	11	7	y	y				
		80	120	C	10Y6/1	Fe	com	0	poor	28	0	y	y				
									Total	133	112						
									MD	28	15						
62	T	0	20	mZCL	10YR4/2			2	-	37	37			II	2	2	WE DR
		20	22	C	10YR4/3			30		2	2						
		22	65	C	10YR4/3			35		30	30						
		65	120	C	2.5Y5/3	Fe	com	0	poor	49	26	y	y				
									Total	119	96						
									MD	14	-1						
63	T	0	40	hCL	10YR4/3			10	-	65	65			III	3b	3b	WE
		40	70	C	10YR5/3	FeMn	com	0	poor	27	39	y	y				
		70	120	C	10Y6/1	Fe	com	0	poor	35	0	y	y				
									Total	127	104						
									MD	22	7						
									Droughtiness grade(DR)	2	2						
64	T	0	35	mCL	10YR4/3			15	-	54	54			IV	3b	3b	WE
		35	80	C	2.5Y5/3	FeMn	many	0	poor	41	46	y	y				

		80	120	C	10Y6/1	Fe	com	0	poor	28	0	y	y				
									Total	123	100						
									MD	18	3						
									Droughtiness grade(DR)	2	2						
65	T	0	40	mZCL	10YR4/2			5	-	72	72			IV	3b	3b	WE
		40	80	C	2.5Y5/3	FeMn	many	2	poor	33	38	y	y				
		80	120	C	10Y6/1	Fe	com	0	poor	28	0	y	y				
									Total	134	111						
									MD	29	14						
									Droughtiness grade(DR)	2	1						
66	T	0	40	mCL	10YR4/3			10	-	65	65			II	2	2	WE DR
		40	70	C	10YR5/3	Fe	com	15		28	41	y					
		70	120	C	2.5Y5/3	Fe	com	0	poor	35	0	y	y				
									Total	128	106						
									MD	23	9						
									Droughtiness grade(DR)	2	2						
67	T	0	25	mCL	10YR5/3			1	-	45	45			III	3a	3a	WE
		25	45	hCL	10YR5/3	FeMn	com	10		29	29	y					
		45	60	C	10YR5/3	FeMn	com	15	poor	12	17	y	y				
		60	120	C	10YR5/3	FeMn	many	5	poor	40	12	y	y				
									Total	125	103						
									MD	20	6						
									Droughtiness grade(DR)	2	2						
68	T	0	30	hCL	10YR4/2			10	-	49	49			IV	3b	3b	WE
		30	120	C	10Y6/1	FeMn	com	1	poor	74	52	y	y				
									Total	123	100						
									MD	18	3						
									Droughtiness grade(DR)	2	2						
69	T	0	25	hCL	10YR5/2			10	-	41	41			IV	3b	3b	WE
		25	35	C	2.5Y5/3	FeMn	com	1	poor	13	13	y	y				
		35	120	C	10Y6/1	FeMn	com	1	poor	68	45	y	y				
									Total	121	99						
									MD	16	2						
									Droughtiness grade(DR)	2	2						

70	T	0	15	mCL	10YR5/3			15	-	23	23			IV	3b	3b	WE
		15	45	C	2.5Y5/3	Fe	com	0	poor	39	39	y	y				
		45	120	C	10Y6/1	Fe	com	0	poor	56	33	y	y				
									Total	118	95						
									MD	13	-2						
									Droughtiness grade(DR)	2	2						
71	T	0	20	mCL	10YR5/3			15	-	31	31			IV	3b	3b	WE
		20	65	C	2.5Y5/3	Fe	com	0	poor	50	59	y	y				
		65	120	C	10Y6/1	Fe	com	0	poor	39	7	y	y				
									Total	119	96						
									MD	14	-1						
									Droughtiness grade(DR)	2	2						
72	T	0	30	mCL	10YR5/3			15	-	46	46			IV	3b	3b	WE
		30	70	C	2.5Y5/3	FeMn	com	15	poor	34	45	y	y				
		70	100	C	2.5Y5/4	Fe	com	0	poor	21	0	y					
		100	120	C	10Y6/1	Fe	com	0	poor	14	0	y	y				
									Total	116	91						
									MD	11	-6						
									Droughtiness grade(DR)	2	2						
73	T	0	30	hCL	10YR5/3			15	-	46	46			IV	3b	3b	WE
		30	40	C	2.5Y5/3	Fe	com	1	poor	13	13	y	y				
		40	120	C	10Y6/1	Fe	com	0	poor	62	39	y	y				
									Total	121	98						
									MD	16	1						
									Droughtiness grade(DR)	2	2						
74	T	0	25	mCL	10YR4/2			15	-	39	39			III	3a	3a	WE
		25	35	C	10YR5/3	FeMn	com	35		11	11	y					
		35	65	C	10YR5/3	FeMn	com	35		24	32	y					
		65	120	C	10Y6/1	Fe	com	5	poor	37	6	y	y				
									Total	110	88						
									MD	5	-9						
									Droughtiness grade(DR)	2	2						
75	T	0	25	mCL	10YR4/3	Fe	com	10	-	41	41			IV	3b	3b	WE
		25	30	C	2.5Y5/3	Fe	com	15	poor	6	6	y	y				

		30	45	C	2.5Y5/3	Fe	com	35	poor	13	13	y	y				
		<u>45</u>	65	C	2.5Y5/3	Fe	com	35	poor	11	18	y	y				
		65	120	C	10Y6/1	Fe	com	5	poor	37	6	y	y				
									Total	108	83						
									MD	3	-14						
									Droughtiness grade(DR)	3a	3a						
76	T	0	30	hCL	10YR4/2	Fe	com	2	-	53	53	y		IV	3b	3b	WE
		30	70	C	2.5Y5/3	Fe	com	15	poor	34	45	y	y				
		70	120	C	10Y6/1	Fe	com	0	poor	35	0	y	y				
									Total	122	98						
									MD	17	1						
									Droughtiness grade(DR)	2	2						
77	T	0	35	hCL	10YR5/3	Fe	com	2	-	62	62	y		IV	3b	3b	WE
		35	70	C	10YR5/3	Fe	com	1	poor	33	45	y	y				
		70	90	C	10YR5/6	Fe	com	25	poor	11	0		y				
		90	120	C	10Y6/1	Fe	com	0	poor	21	0	y	y				
									Total	127	107						
									MD	22	10						
									Droughtiness grade(DR)	2	2						
78	T	0	30	mCL	10YR4/3			30	-	39	39			III	3a	3b	ST
		30	60	C	2.5Y5/3	Fe	com	15		34	41	y					
		60	120	C	2.5Y6/1	Fe	com	15	poor	36	11	y	y				
									Total	109	91						
									MD	4	-6						
									Droughtiness grade(DR)	3a	2						
79	T	0	25	hCL	10YR4/3	Fe	com	15	-	39	39			III	3b	3b	WE
		25	30	hCL	10YR4/3	Fe	com	15		7	7						
		<u>30</u>	65	hCL	10YR5/3	Fe	com	30		34	40	y					
		65	120	C	10Y6/1	Fe	com	2	poor	38	6	y	y				
									Total	117	92						
									MD	12	-5						
									Droughtiness grade(DR)	2	2						
80	T	0	40	mCL	10YR4/3			1	-	71	71			III	3a	3a	WE
		40	50	C	10YR5/3	FeMn	com	1		16	16	y					

St >2cm over
15%

		50	120	C		2.5Y5/3	Fe	com	10	poor	44	24	y	y				
										Total	132	111						
										MD	27	14						
										Droughtiness grade(DR)	2	1						
81	T	0	40	hCL		10YR4/2			2	-	71	71			III	3b	3b	WE
		40	60	C		10YR5/3	Fe	com	15	poor	17	22	y	y				
		60	120	C		10Y6/1	Fe	many	15	poor	36	11	y	y				
										Total	124	104						
										MD	19	7						
										Droughtiness grade(DR)	2	2						
82	T	0	15	hCL		10YR4/2			2	-	26	26			IV	3b	3b	WE
		15	50	C		2.5Y5/3	Fe	com	1	poor	45	45	y	y				
		50	120	C		10Y6/1	Fe	many	0	poor	49	26	y	y				
										Total	121	98						
										MD	16	1						
										Droughtiness grade(DR)	2	2						
83	T	0	30	hCL		10YR4/2			2	-	53	53			IV	3b	3b	WE
		30	55	C		2.5Y5/3	Fe	com	1	poor	29	32	y	y				
		55	120	C		10Y6/1	Fe	many	0	poor	46	20	y	y				
										Total	128	105						
										MD	23	8						
										Droughtiness grade(DR)	2	2						
84	T	0	30	hCL		10YR5/3			2	-	53	53			IV	3b	3b	WE
		30	45	C		2.5Y5/2	Fe	com	1	poor	19	19	y	y				
		45	120	C		10Y6/1	Fe	many	0	poor	56	33	y	y				
										Total	128	105						
										MD	23	8						
										Droughtiness grade(DR)	2	2						
85	T	0	25	hCL		10YR5/3			2	-	44	44			IV	3b	3b	WE
		25	60	C		10YR5/3	Fe	com	1	poor	39	45	y	y				
		60	120	C		10Y6/1	Fe	many	0	poor	42	13	y	y				
										Total	125	102						
										MD	20	5						
										Droughtiness grade(DR)	2	2						

86	T	0	35	hCL	10YR4/3			2	-	62	62			III	3b	3b	WE		
		35	45	hCL	10YR4/3			2		16	16								
		45	65	C	10YR5/3	Fe	com	1	poor	17	26	y	y						
		65	120	C	2.5Y5/3	Fe	many	0	poor	39	7	y	y						
		Total										133	110					GW at 65cm	
		MD										28	13						
Droughtiness grade(DR)										2	1								
87	T	0	10	hCL	10YR4/3			2	-	18	18			IV	3b	3b	WE		
		10	30	C	2.5Y5/3	Fe	com	2	poor	26	26	y	y						
		30	120	C	10Y6/1	Fe	com	1	poor	74	52	y	y						
		Total										117	95						
		MD										12	-2						
		Droughtiness grade(DR)										2	2						
88	T	0	25	hCL	10YR4/2			12	-	40	40			III	3b	3b	WE		
		25	45	hCL	10YR5/3	FeMn	com	40		20	20	y							
		45	65	hCL	10YR5/3	FeMn	com	40	poor	10	15	y	y						
		65	120	C	2.5Y5/3	Fe	many	0	poor	39	7	y	y						
		Total										109	82					GW at 45cm	
		MD										4	-15						
Droughtiness grade(DR)										3a	3a								
89	T	0	25	hCL	10YR4/3			10	-	41	41			III	3b	3b	WE		
		25	30	C	10YR5/3	FeMn	com	40		5	5	y							
		30	65	C	10YR5/3	FeMn	com	40	poor	23	29	y	y						
		65	120	C	2.5Y5/3	Fe	many	0	poor	39	7	y	y						
		Total										107	81						
		MD										2	-16						
Droughtiness grade(DR)										3a	3a								
90	T	0	28	hCL	10YR5/3			5	-	48	48			III	3b	3b	WE		
		28	60	C	2.5Y5/3	Fe	com	20		35	42	y							
		60	70	C	2.5Y5/3	Fe	com	15	poor	6	11	y	y						
		70	120	C	2.5Y5/3	Fe	many	0	poor	35	0	y	y						
		Total										124	101						
		MD										19	4						
Droughtiness grade(DR)										2	2								

91	T	0	30	mCL	10YR4/2			2	-	53	53			IV	3b	3b	WE
		30	50	C	2.5Y5/3	Fe	many	15	poor	22	22	y	y				
		50	120	C	10Y6/1	Fe	com	0	poor	49	26	y	y				
									Total	124	101						
									MD	19	4						
									Droughtiness grade(DR)	2	2						
92	T	0	30	hCL	10YR5/3			2	-	53	53			IV	3b	3b	WE
		30	80	C	5GY5/1	Fe	com	0	poor	47	52	y	y				
		80	120	C	5GY5/1	Fe	com	2	poor	27	0	y	y				
									Total	127	105						
									MD	22	8						
									Droughtiness grade(DR)	2	2						
93	T	0	25	hZCL	10YR4/2	Fe	few	0	-	48	48			IV	3b	3b	WE
		25	35	C	10YR4/3	Fe	com	0		16	16						
		35	85	C	10YR5/3	Fe	com	0	poor	44	46	y	y				
		85	120	C	Y 2.5Y5/3	Fe	com	5	poor	23	0	y	y				
									Total	131	109						
									MD	26	12						
94	T	0	20	hZCL	10YR4/2			0	-	38	38			IV	3b	3b	WE
		20	35	C	10YR5/1	Fe	com	0		24	24	y					
		35	40	C	10YR5/3	Fe	com	10	poor	6	6	y	y				
		40	60	C	2.5Y5/3	Fe	com	5	poor	19	25	y	y				
		60	120	C	10Y6/1	Fe	com	0	poor	42	13	y	y				
									Total	129	106						
95	T	0	28	hCL	10YR4/2	Fe	few	0	-	50	50			III- IV	3b	3b	WE
		28	40	C	10YR5/3	Fe	com	0		19	19	y					
		40	85	C	2.5Y5/3	Fe	com	0	poor	38	39	y	y				
		85	120	C	10Y6/1	Fe	com	0	poor	25	0	y	y				
									Total	132	109						
									MD	27	12						
									Droughtiness grade(DR)	2	1						

96	T	0	15	hCL	10YR4/2	Fe	few	0	-	27	27			III	3b	3b	WE
		15	50	C	10YR5/3	Fe	com	0		56	56	y					
		50	80	C	2.5Y5/3	Fe	com	0	poor	21	26	y	y				
		80	120	C	10Y6/1	Fe	com	0	poor	28	0	y	y				
						Total				132	109						
						MD				27	12						
Droughtiness grade(DR)										2	1						
97	T	0	30	hZCL	10YR5/2	Fe	few	0	-	57	57			III	3b	3b	WE
		30	50	C	10YR5/3	Fe	com	0		32	32	y					
		50	95	C	10YR5/3	Fe	com	0	poor	32	26	y	y				
		95	120	C	10Y6/1	Fe	com	0	poor	18	0	y	y				
						Total				138	115						
						MD				33	18						
Droughtiness grade(DR)										1	1						
98	T	Abandoned bike track. Mounds/bunds of clay. Debris inc. brick and concrete blocks. Ditches												IV	3b	5	MR
99	T	0	15	hZCL	10YR4/3			5	-	27	27			III-IV	3b	3b	WE
		15	30	C	10YR5/3	Fe	few	0		24	24	y					
		30	40	C	10YR5/3	Fe	com	0		16	16	y					
		40	90	C	10YR5/3	FeMn	com	0	poor	41	39	y	y				
		90	120	C	Y	10YR5/3	Fe	com	10	22	0	y					
						Total				130	106						
				MD				25	9								
Droughtiness grade(DR)										2	2						
100	T	0	24	C	10YR4/3	Fe	few	0	-	41	41			III-IV	3b	3b	WE
		24	28	C	10YR5/3	FeMn	few	5		6	6	y					
		28	60	C	10YR5/3	Fe	com	0	m/poor	39	46	y	(y)				
		60	120	C	2.5Y5/3	FeMn	com	0	poor	42	13	y	y				
						Total				128	106						
				MD				23	9								
Droughtiness grade(DR)										2	2						
101	T	0	20	mZCL	10YR4/2			5	-	36	36			III	3a	3a	WE
		20	30	hCL	10YR4/3			1		16	16	y					
		30	50	C	10YR5/3	FeMn	com	0		32	32	y					
		50	120	C	10YR5/3	FeMn	com	0	poor	49	26	y	y				
Droughtiness grade(DR)										2	2						

										Total	133	110					
										MD	28	13					
										Droughtiness grade(DR)	2	1					
102	T	0	10	ohCL	10YR4/2	Fe	com		-	28	28	y		/V	3b	3b	WE
		10	22	C	10YR5/2	Fe	com	1		19	19	y					
		22	45	C	2.5Y5/3	Fe	com	0	poor	30	30	y	y				
		45	80	C	2.5Y5/3	Fe	many	0	poor	28	33	y	y				
		80	120	C	10Y6/1	Fe	com	0	poor	28	0	y	y				
										Total	132	109					
										MD	27	12					
										Droughtiness grade(DR)	2	1					
103	T	0	26	mCL	10YR5/2	Fe	com	0	-	44	44	y		/V	3b	3b	WE
		26	50	C	2.5Y5/3	Fe	com	0	poor	31	31	y	y				
		50	120	C	10Y6/1	Fe	com	0	poor	49	26	y	y				
										Total	124	101					
										MD	19	4					
										Droughtiness grade(DR)	2	2					
104	T	0	28	C	10YR5/2	Fe	com	0	-	48	48	y		/V	3b	3b	WE
		28	60	C	2.5Y5/3	FeMn	com	2	poor	35	41	y	y				
		60	90	C	2.5Y5/3	FeMn	com	5	poor	20	12	y	y				
		90	120	C	10Y6/1	Fe	com	0	poor	21	0	y	y				
										Total	124	101					
										MD	19	4					
										Droughtiness grade(DR)	2	2					
105	T	0	10	oC	10YR5/2			0	-	23	23			/V	3b	3b	WE
		10	30	C	10YR5/2			2		31	31						
		30	75	C	2.5Y5/3	Fe	com	5	poor	41	50	y	y				
		75	120	C	10Y6/1	Fe	com	0	poor	32	0	y	y				
										Total	127	104					
										MD	22	7					
										Droughtiness grade(DR)	2	2					
106	T	0	5	oC	10YR5/2			2	-	11	11			/V	3b	3b	WE
		5	20	C	10YR5/2			2		24	24						
		20	33	C	10YR5/3	Fe	com	2		20	20	y					
		33	50	C	2.5Y5/3	Fe	com	0	poor	22	22	y	y				

		50	120	C	10Y6/1	Fe	com	0	poor	49	26	y	y				
									Total	126	103						
									MD	21	6						
									Droughtiness grade(DR)	2	2						
107	T	0	20	hCL	10YR5/3	Fe	few	0	-	36	36			III-IV	3b	3b	WE
		20	40	C	10YR5/3	FeMn	com	2		31	31	y					
		40	65	C	2.5Y5/3	FeMn	com	2	poor	23	32	y	y				
		65	120	C	10Y6/1	Fe	com	0	poor	39	7	y	y				
									Total	129	106						
									MD	24	9						
									Droughtiness grade(DR)	2	2						
108	T	0	5	oCL	10YR3/2			0	-	14	14			III	3b	3b	WE
		5	26	hCL	10YR4/3	Fe	com	2		33	33						
		26	42	hCL	10YR4/2	Fe	com	2		25	25	y					
		42	80	C	2.5Y5/3	Fe	com	0	poor	31	36	y	y				
		80	120	C	5GY5/1	Fe	com	0	poor	28	0	y	y				
									Total	131	108						
									MD	26	11						
									Droughtiness grade(DR)	2	1						
109	T	0	28	C	10YR5/2			0	-	48	48			IV	3b	3b	WE
		28	55	C	2.5Y5/3	Fe	com	5	poor	31	33	y	y				
		55	120	C	10Y6/1	Fe	com	2	poor	45	19	y	y				
									Total	123	100						
									MD	18	3						
									Droughtiness grade(DR)	2	2						
110	T	0	30	hCL	10YR5/3	Fe	com	0	-	54	54	y		IV	3b	3b	WE
		30	40	C	2.5Y5/3	Fe	com	5	poor	12	12	y	y				
		40	120	C	10Y6/1	Fe	com	2	poor	61	38	y	y				
									Total	127	105						
									MD	22	8						
									Droughtiness grade(DR)	2	2						
111	T	0	30	C	10YR4/2	Fe	com	0	-	51	51	y		IV	3b	3b	WE
		30	80	C	2.5Y5/3	Fe	com	0	poor	47	52	y	y				
		80	120	C	10Y6/1	Fe	com	0	poor	28	0	y	y				

										Total	126	103					
										MD	21	6					
										Droughtiness grade(DR)	2	2					
112	T	0	30	C	10YR5/2	Fe	com	0	-	51	51	y		IV	3b	3b	WE
		30	40	C	2.5Y5/2	Fe	com	10	poor	12	12	y	y				
		40	120	C	10Y6/1	Fe	com	0	poor	62	39	y	y				
										Total	125	102					
										MD	20	5					
										Droughtiness grade(DR)	2	2					
113 P2	T	0	16	hCL	10YR5/2			0	-	27	27			IV	3b	3b	WE
		16	40	C	10YR5/2	Fe	com	5	poor	30	30	y	y				
		40	120	C	10Y6/1	Fe	com	2	poor	61	38	y	y				
										Total	118	95					
										MD	13	-2					
										Droughtiness grade(DR)	2	2					
114	T	0	35	mCL	10YR4/3			0	-	63	63			III	3a	3a	WE
		35	47	hCL	10YR5/3	Fe	few	0		19	19						
		47	120	C	10YR5/3	FeMn	many	0	poor	53	30	y	y				
										Total	135	112					
										MD	30	15					
										Droughtiness grade(DR)	1	1					
115	T	0	25	mCL	10YR4/3			5	-	43	43			II	2	2	WE
		25	50	C	10YR5/3	FeMn	com	0		40	40	y					
		50	120	C	10YR5/3	FeMn	many	0		56	32	y					
										Total	139	115					
										MD	34	18					
										Droughtiness grade(DR)	1	1					
116	T	0	25	hCL	10YR4/2			1	-	45	45			IV	3b	3b	WE
		25	37	C	10YR5/2	FeMn	few	15		17	17						
		37	90	C	2.5Y5/3	Fe	com	1	poor	44	43	y	y				
		90	120	C	10Y6/1	Fe	com	0	poor	21	0	y	y				
										Total	127	104					
										MD	22	7					
										Droughtiness grade(DR)	2	2					

117	T	0	24	mCL	10YR4/2			1	-	43	43			III	3a	3a	WE
		24	60	C	2.5Y5/3	FeMn	com	25		38	44	y					
		60	120	C	10Y6/1	Fe	com	1	poor	42	13	y	y				
									Total	122	100						
									MD	17	3						
									Droughtiness grade(DR)	2	2						
118	T	0	20	mCL	10YR4/2			0	-	36	36			IV	3b	3b	WE
		20	80	C	2.5Y5/4	FeMn	com	10	poor	54	59	(y)	y				
		80	120	C	10Y6/1	Fe	com	1	poor	28	0	y	y				
									Total	118	95						
									MD	13	-2						
									Droughtiness grade(DR)	2	2						
119	T	0	38	hCL	10YR4/2			0	-	72	72			IV	3b	3b	WE
		38	75	C	2.5Y5/3	FeMn	com	1	poor	30	39	y	y				
		75	120	C	10Y6/1	Fe	com	1	poor	31	0	y	y				
									Total	133	111						
									MD	28	14						
									Droughtiness grade(DR)	2	1						
120	T	0	10	mCL	10YR4/2			0	-	18	18			IV	3b	3b	WE
		10	18	hCL	10YR5/3	Fe	com	1		13	13	y	y				
		18	50	C	2.5Y5/3	Fe	com	1	poor	41	41	y	y				
		50	85	C	2.5Y5/3	Fe	com	0	poor	25	26	y	y				
		85	120	C	10Y6/1	Fe	com	0	poor	25	0	y	y				
									Total	121	98						
									MD	16	1						
									Droughtiness grade(DR)	2	2						
121	T	0	15	mCL	10YR4/2			0	-	18	18			IV	3b	3b	WE
		15	20	hCL	10YR5/3	Fe	com	1		13	13	y	y				
		20	50	C	2.5Y5/3	Fe	com	1	poor	41	41	y	y				
		50	60	C	2.5Y5/3	Fe	com	0	poor	25	26	y	y				
		60	120	C	10Y6/1	Fe	com	0	poor	25	0	y	y				
									Total	121	98						
									MD	16	1						
									Droughtiness grade(DR)	2	2						

Wet - GW at 18cm

122	T	0	30	hCL	10YR4/2			0	-	54	54			IV	3b	3b	WE
		30	55	hCL	2.5Y5/3	Fe	com	0	poor	28	30	y	y				
		55	120	C	10Y6/1	Fe	com	0	poor	46	20	y	y				
									Total	127	104						
									MD	22	7						
									Droughtiness grade(DR)	2	2						
123	T	0	40	mCL	10YR4/2			5	-	69	69			II	2	2	WE
		40	55	hCL	10YR4/3	Fe	few	25		16	18						
		55	120	C	10YR5/3	FeMn	many	0	poor	46	20	y	y				
									Total	130	106						
									MD	25	9						
									Droughtiness grade(DR)	2	2						
124	T	0	35	mCL	10YR4/2	Fe	few	5	-	60	60			II	2	2	WE
		35	52	hCL	10YR4/3			20		21	22						
		52	95	C	2.5Y5/3	Fe	com	2	poor	30	23	y	y				
		95	121	C	2.5Y5/3	Fe	com	0	poor	18	0	y	y				
									Total	129	105						
									MD	24	8						
									Droughtiness grade(DR)	2	2						
125	T	0	30	mCL	10YR4/3			10	-	49	49			III	3a	3a	WE
		30	52	hCL	10YR5/3	FeMn	com	35		23	24	y					
		52	55	C	10YR5/3	FeMn	com	35		1	3	y					
		55	120	C	2.5Y5/3	Fe	com	15	poor	39	17	y	y				
									Total	112	92						
									MD	7	-5						
									Droughtiness grade(DR)	2	2						
126	T	0	5	ohCL	10YR4/3			0	-	14	14			IV	3b	3b	WE
		5	15	hCL	10YR4/3			0		16	16						
		15	25	hCL	10YR5/3	Fe	com	0		16	16	y					
		25	120	C	2.5Y5/3	Fe	com	2	poor	80	57	y	y				
									Total	126	103						
									MD	21	6						
									Droughtiness grade(DR)	2	2						
127	T	0	40	C	10YR4/3	Fe	few	2	-	67	67			III	3b	3b	WE

		40	60	C	10YR5/3	Fe	com	2	poor	20	26	y	y				
		60	80	C	2.5Y5/3	Fe	com	10	poor	13	12	y	y				
		80	120	C	10Y6/1	Fe	com	2	poor	27	0	y	y				
									Total	127	104						
									MD	22	7						
									Droughtiness grade(DR)	2	2						
128	T	0	30	hZCL	10YR4/2			2	-	56	56			IV	3b	3b	WE
		30	60	C	2.5Y5/3	Fe	com	0	poor	33	39	y	y				
		60	120	C	10Y6/1	Fe	com	0	poor	42	13	y	y				
									Total	131	108						
									MD	26	11						
									Droughtiness grade(DR)	2	1						
129	T	0	28	hCL	10YR4/3	Fe	few	15	-	43	43			II	3a	3a	WE DR
		28	40	C	10YR5/3	FeMn	com	35	m/poor	12	12	y					
		40	60	C	10YR5/3	FeMn	com	60	m/poor	10	13	y					
		60	120	C				60		21	7	y					
									Total	86	75						
									MD	-19	-22						
									Droughtiness grade(DR)	3a	3a						
130	T	0	28	hCL	10YR4/2			2	-	49	49			IV	3b	3b	WE
		28	40	C	10YR5/3	FeMn	com	2	poor	15	15	y	y				
		40	120	C	2.5Y5/3	FeMn	com	5	poor	59	37	y	y				
									Total	124	102						
									MD	19	5						
									Droughtiness grade(DR)	2	2						
131	T	0	32	hCL	10YR4/3			12	-	51	51			I	2	3b	DR
		32	45	C	10YR4/3			30		15	15						
		45	120	C	10YR4/3			80		16	10						
									Total	82	76						
									MD	-23	-21						
									Droughtiness grade(DR)	3b	3a						
132	T	0	38	hCL	10YR4/3			15	-	59	59			II	3a	3a	WE
		38	65	C	10YR5/3	Fe	com	10		28	39	y					
		65	80	C	10YR5/3	Fe	com	25		9	6	y					

LSS - very small stone

										MD	-9	-21					
										Droughtiness grade(DR)		3a	3a				
138	T	0	28	hCL	y	10YR5/3			8	-	47	47	//	2	2	WE DR	
		28	60	C	y	10YR5/3	Fe	com	15		37	44					y
		60	80	C	y	10YR5/1	Fe	com	15		14	14					y
		80	120	C	y	10YR5/1	Fe	com	20		26	0					y
						Total		123	104	As Badsey assoc? GW at 80cm							
										MD	18	7					
										Droughtiness grade(DR)		2	2				
139	T	0	30	hCL	y	10YR4/3			8	-	50	50	/	2	2	WE DR	
		30	50	C	y	10YR5/3	Fe	com	10		29	29					y
		50	120	C	y	10YR5/3	Fe	com	25		43	25					y
						Total		122	103	As Badsey assoc?							
												MD					17
										Droughtiness grade(DR)		2	2				
140	T	0	40	C	y	10YR4/2			8	-	63	63	/	3a	3a	WE DR	
		40	52	SCL	y	10YR5/4			60		7	8					
		52	120	SCL	y	10YR5/4			60		29	12					
						Total		100	83	Most stone v. small with pebbles							
												MD					-5
										Droughtiness grade(DR)		3a	3a				
141	T	0	28	mCL	y	10YR4/2	Fe	few	5	-	48	48	/	1	3a	DR	
		28	42	C	y	10YR4/3	Fe	com	20		18	18					
		42	120	C	y	10YR5/3	Fe	com	60		30	20					y
						Total		96	86								
												MD					-9
										Droughtiness grade(DR)		3a	3a				
142	T	0	32	hCL		10YR4/3			12	-	51	51	/	2	2	WE DR	
		32	45	C		7.5YR4/3	Fe	com	20		17	17					
		45	87	C		7.5YR4/3	Fe	com	30		27	29					
		87	120	C		7.5YR4/3	Fe	com	35		18	0					
						Total		113	97								
										MD	8	0					
										Droughtiness grade(DR)		2	2				

143	T	0	28	hCL	y	10YR4/2			12	-	45	45		/	2	2	WE DR
		28	68	C	y	10YR4/3	FeMn	com	12		44	57					
		68	75	C	y	7.5YR5/4	Fe	com	35		4	2					
		75	120	C	y	7.5YR5/4	Fe	com	35		24	0					
									Total		117	104					
									MD		12	7					
									Droughtiness grade(DR)		2	2					
144	T	0	28	hCL	y	10YR4/2			25	-	39	39		/	2	3a	DR
		28	32	C	y	10YR4/3			40		4	4					
		32	50	C	y	10YR5/3			40		18	18					
		50	120	SL	y	10YR5/3			40		48	19					
									Total		108	79					
									MD		3	-18					
									Droughtiness grade(DR)		3a	3a					
145	T	0	34	mCL	y	10YR4/3			10	-	55	55		//	2	2	WE DR
		34	40	C	y	10YR5/3	FeMn	com	5		9	9	y				
		40	42	C	y	10YR5/3			25		2	2	y				
		42	50	C	y	10YR5/3			35		9	9	y				
		50	120	SL		10YR5/3			40		48	19	y				
									Total		123	94					
									MD		18	-3					
									Droughtiness grade(DR)		2	2					
146	T	0	30	mCL		10YR4/3			8	-	50	50		/	1	1	
		30	120	hCL		10YR4/4	Fe	com	2		100	63					
									Total		150	113					
									MD		45	16					
									Droughtiness grade(DR)		1	1					
147	T	0	38	mCL	y	10YR4/3	FeMn	few	8	-	63	63		//	2	2	WE
		38	95	C	y	10YR5/3	Fe	com	0		55	51	y				
		95	120	SCL	y	10YR5/3	Fe	com	1		25	0	y				
									Total		143	114					
									MD		38	17					
									Droughtiness grade(DR)		1	1					
148	T	0	20	mCL	y	10YR4/3	FeMn	few	8	-	33	33		//	2	2	WE

		20	80	C	y	10YR5/3	Fe	com	5		69	76	y			
		80	120	mCL	y	10YR5/3	FeMn	com	1		40	0	y			
										Total	142	110				
										MD	37	13				
										Droughtiness grade(DR)	1	1				
149	T	0	29	mZCL		10YR4/2			0	-	55	55		/	1	1
		29	45	mCL		10YR4/3	Fe	com	0		26	26				
		45	65	mCL		10YR5/3	Fe	com	0		23	32	y			
		65	120	C		10YR5/3	FeMn	com	0		44	8	y			
										Total	148	121				
										MD	43	24				
										Droughtiness grade(DR)	1	1				
150	T	0	30	mCL		10YR4/3			0	-	54	54		/	1	1
		30	80	mCL		10YR4/3	Fe	com	0		62	64				
		80	120	hCL		10YR5/3	Fe	com	0		40	0	y			
										Total	156	118				
										MD	51	21				
										Droughtiness grade(DR)	1	1				
151	T	0	20	hCL		10YR4/3			0	-	36	36		//	3a	3a
		20	55	C		10YR5/3	FeMn	com	0		52	56	y			
		55	120	C		10YR5/3	FeMn	com	0		52	24	y			
										Total	140	116				
										MD	35	19				
										Droughtiness grade(DR)	1	1				
152	T	0	26	mCL		10YR4/3	FeMn	com	0	-	47	47		//	2	2
		26	50	hCL		10YR5/3	FeMn	com	2		38	38	y			
		50	120	SCL		10YR5/3	FeMn	com	15		60	26	y			
										Total	145	110				
										MD	40	13				
										Droughtiness grade(DR)	1	1				
153	T	0	18	mCL		10YR4/3	FeMn	com	0	-	32	32		//	2	2
		18	40	hCL		10YR5/3	FeMn	com	20		29	29	y			
		40	120	SCL		10YR5/3	FeMn	com	35		57	30	y			
										Total	118	91				

										MD	13	-6				
										Droughtiness grade(DR)	2	2				
154	T	0	28	mCL	10YR4/2			0	-	50	50		//	2	2	WE DR
		28	47	hCL	10YR5/3	Fe	com	0		30	30	y				
		47	65	C	10YR5/3	FeMn	com	0		17	29	y				
		65	80	C	10YR5/3	FeMn	com	20		10	7	y				
		80	120	C	10YR5/3	FeMn	com	20		26	0	y				
										Total	133	116				
										MD	28	19				
										Droughtiness grade(DR)	2	1				
155	T	0	30	mCL	10YR4/3			0	-	50	50		//	2	2	WE DR
		30	120	hCL	10YR5/3	Fe	com	0		30	30	y				
										Total	133	116				
										MD	28	19				
										Droughtiness grade(DR)	2	1				
156	T	0	25	oC	10YR4/3	FeMn	few	1	-	57	57		//	2	2	WE
		25	40	hCL	10YR5/3	FeMn	com	1		24	24	y				
		40	120	C	10YR5/3	FeMn	com	1		71	48	y				
										Total	152	128	Border organic - textures/workability as mCL			
										MD	47	31				
										Droughtiness grade(DR)	1	1				
157	T	0	30	oC	10YR4/3			1	-	68	68		//	2	2	WE DR
		30	48	hCL	10YR5/3	FeMn	com	5		27	27	y				
		48	55	C	10YR5/3	FeMn	com	5		7	11	y				
		55	120	C	10YR5/3	FeMn	com	15		45	21	y				
										Total	147	127	Border organic - textures/workability as mCL			
										MD	42	30				
										Droughtiness grade(DR)	1	1				
158	T	0	25	mCL	10YR4/3			1	-	53	53		//	2	2	WE DR
		25	50	hCL	10YR5/3	FeMn	com	5		27	27	y				
		50	120	C	10YR5/3	FeMn	com	5		7	11	y				
										Total	132	112				
										MD	27	15				
										Droughtiness grade(DR)	2	1				

159	T	0	30	mCL	10YR4/3			1	-	53	53		//	2	2	WE
		30	90	mZCL	10YR5/3	Fe	com	0		74	68	y				
		90	120	hCL	10YR5/3	Fe	com	0		30	0	y				
		Total				157	121									
		MD				52	24									
Droughtiness grade(DR)										1	1					
160	T	0	34	mCL	10YR4/3			1	-	61	61		//	2	2	WE
		34	120	hCL	10YR5/3	Fe	com	0		96	58	y				
		Total				156	118									
		MD				51	21									
		Droughtiness grade(DR)										1				
161	T	0	28	mCL	10YR4/3			1	-	50	50		//	2	2	WE
		28	70	hCL	10YR5/3	FeMn	com	0		55	67	y				
		70	120	C	10YR5/3	FeMn	com	0		40	0	y				
		Total				145	117									
		MD				40	20									
Droughtiness grade(DR)										1	1					
162	T	0	38	mCL	10YR4/3			1	-	68	68		//	2	2	WE
		38	78	hCL	10YR5/3	FeMn	com	0		47	51	y				
		78	120	C	10YR5/3	FeMn	com	0		34	0	y				
		Total				149	119									
		MD				44	22									
Droughtiness grade(DR)										1	1					
163	T	0	23	mCL	10YR4/3			2	-	41	41		//	2	2	WE
		23	75	hCL	10YR5/3	FeMn	com	0		68	75	y				
		75	120	C	10YR5/3	FeMn	com	0		36	0	y				
		Total				145	116									
		MD				40	19									
Droughtiness grade(DR)										1	1					
164	T	0	30	mCL	10YR4/3			2	-	41	41		//	2	2	WE
		30	50	hCL	10YR5/3	FeMn	com	0		68	75	y				
		50	120	C	10YR5/3	FeMn	com	0		36	0	y				
		Total				145	116									
		MD				40	19									

Droughtiness grade(DR)										1	1						
165	T	0	23	mCL	10YR4/3			2	-	41	41	//	2	2	WE		
		23	65	hCL	10YR5/3	FeMn	com	0		58	67					y	
		65	120	C	10YR5/3	FeMn	com	0		44	8					y	
						Total	143	116									
						MD	38	19									
Droughtiness grade(DR)										1	1						
166	T	0	35	mCL	10YR4/3			2	-	62	62	//	2	2	WE		
		35	45	hCL	10YR5/3	FeMn	com	0		16	16					y	
		45	120	C	10YR5/3	FeMn	com	0		64	40					y	
						Total	142	118									
						MD	37	21									
Droughtiness grade(DR)										1	1						
167	T	0	27	mZCL	10YR4/3			2	-	50	50	///	3a	3a	WE		
		27	42	C	10YR5/3	FeMn	com	0		24	24					y	
		42	55	C	2.5Y5/3	Fe	com	0		17	21					y	
		55	90	C	2.5Y5/3	Fe	com	0	poor	25	20					y	y
		90	120	C	2.5Y5/3	Fe	com	5	poor	20	0					y	y
						Total	136	115									
						MD	31	18									
Droughtiness grade(DR)										1	1						

Appendix 3: Site Photographs



Pit 1



Pit 1 topsoil



Pit 1 subsoil



Grey clay subsoil



Pit 2



Pit 2 topsoil



Pit 2 subsoil



Mottled grey clay subsoil (Ob 108)



Pit 3



Pit 3 topsoil



Pit 3 subsoil



Pit 3 subsoil, stones separated



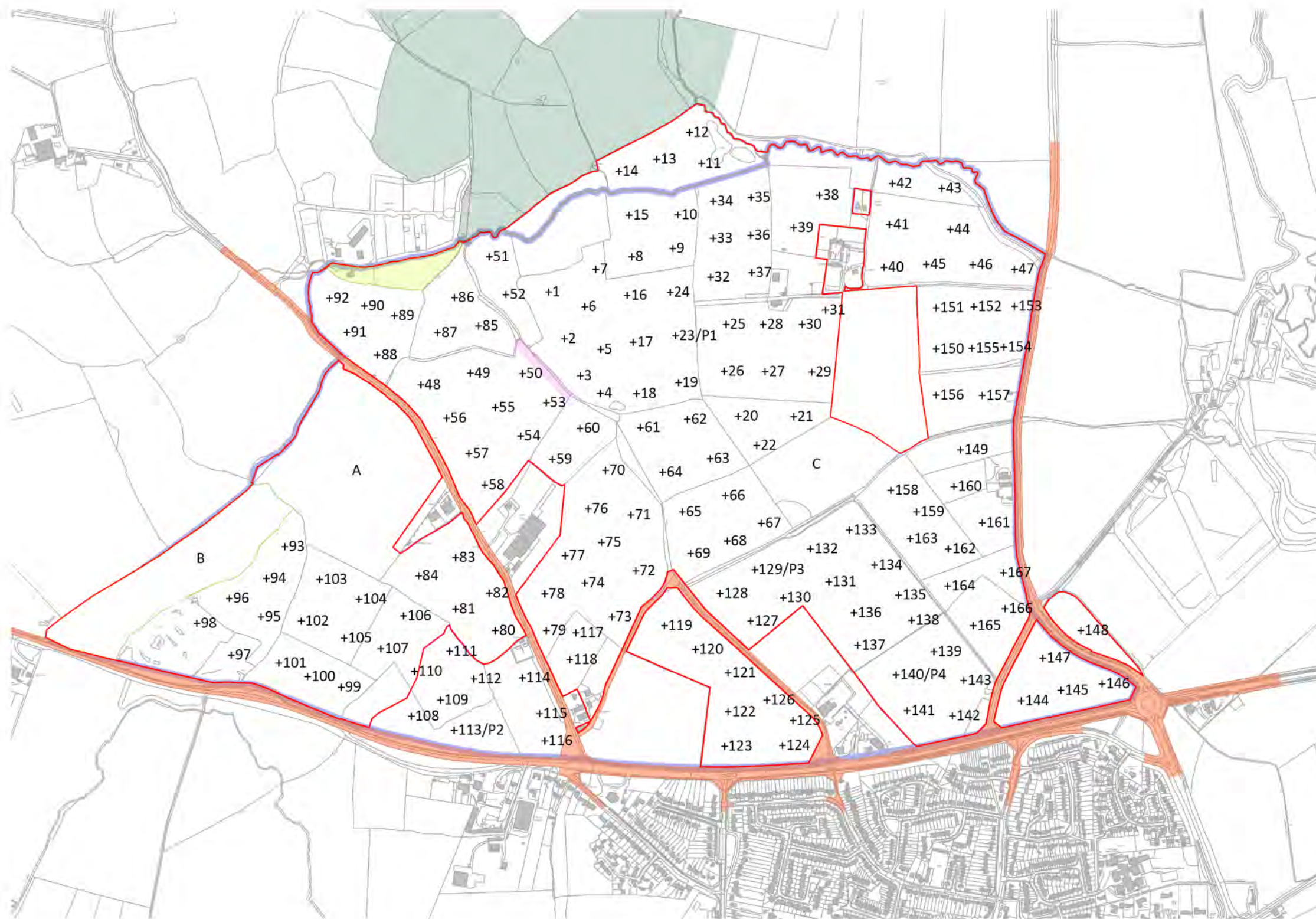
Pit 4



Pit 4 topsoil



Pit 4 stony subsoil



- +1 Auger Observation
- +P Pit Observation
- A Previously Surveyed
- B & C Access Not Available
- Survey Area

Site: Oxfordshire Cotswolds Garden Village, Eynsham

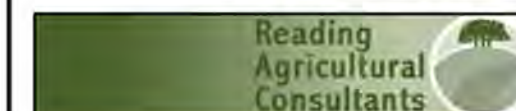
Client: Grosvenor Developments Ltd

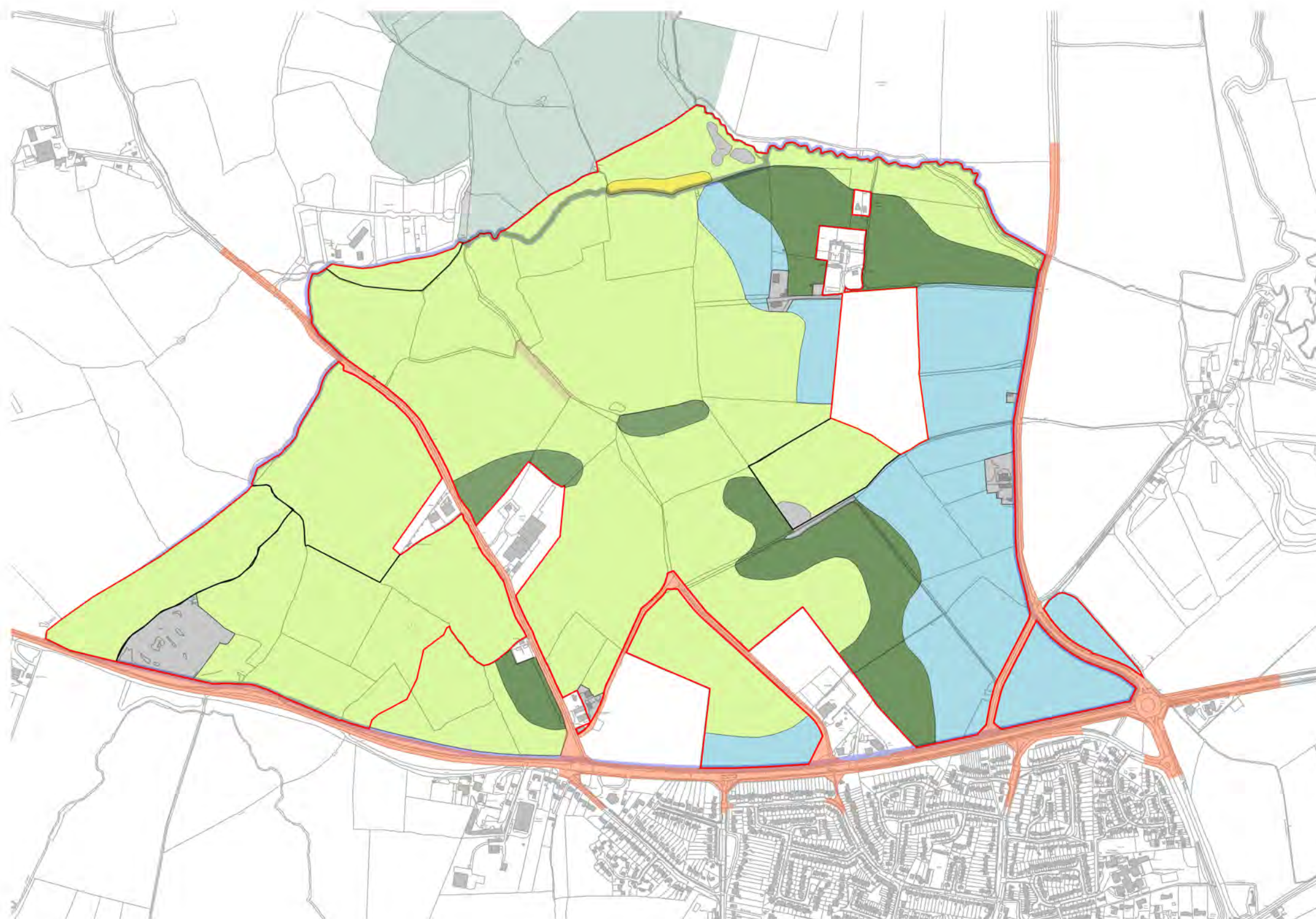
Figure RAC8314-1: Observations

Scale 1:10,000@A3
April/2019

Reading Agricultural Consultants Ltd
Gate House
Beechwood Court
Long Toll
Woodcote
RG8 0RR
01491 684233

www.readingagricultural.co.uk





Agricultural Land Classification

- * Grade 1
- Grade 2
- Subgrade 3a
- Subgrade 3b
- Grade 4
- * Grade 5
- Non Agricultural
- * Not Present
- Survey Area
- Not Surveyed



Site: Oxfordshire Cotswolds Garden
Village, Eynsham

Client: Grosvenor Developments Ltd

Figure RAC8314-2: Agricultural Land
Classification

Scale 1:10,000@A3
April/2019

Reading Agricultural Consultants Ltd
Gate House
Beechwood Court
Long Toll
Woodcote
RG8 0RR
01491 684233

www.readingagricultural.co.uk

