



Working on  
behalf of

# HS2

## Bockendon Road - road closure

Sept 2019 | [www.hs2.org.uk](http://www.hs2.org.uk)

High Speed Two (HS2) is the new high speed railway for Britain. Initial works have now started and are carried out by LM – a joint venture between Laing O'Rourke and J. Murphy & Sons.

We will be closing Bockendon Road, during the day, Monday - Friday 9:30am to 3:30pm from Westwood Heath Road Junction to Crackley Lane (see map below) on 30 September 2019 until June 2020. This is to allow works to be carried out safely when creating an access point for a HS2 worksite.

Access will be maintained for households and businesses along the route. A clearly signed local diversion will be in place (see map below). Further information, including a copy of the notification for Cryfield Grange Road (see map below) is available at [www.hs2inwarwicks.co.uk](http://www.hs2inwarwicks.co.uk).

### Notification



### Duration of works

From 30 Sept 2019  
until June 2020.

Road closed Mon to Fri  
with daytime working  
hours 9.30am to  
3.30pm.

Our contractors may  
also be on site for up  
to one hour  
beforehand and after  
to set up and  
demobilise the site.

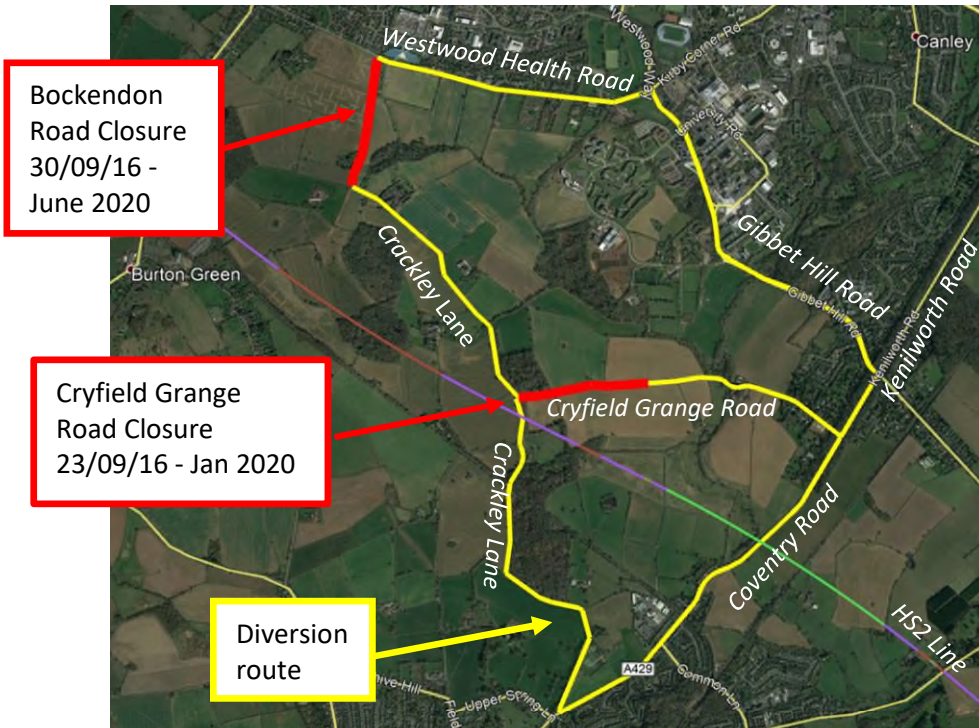
### What to expect

Some noise from on-  
site machinery during  
working hours.

Maintained access for  
pedestrians,  
emergency services  
and to properties  
/businesses along the  
route.

### What we will do

Keep  
[www.roadworks.org.uk](http://www.roadworks.org.uk)  
up-to-date with any  
changes.



**If you have a question about HS2 or our works, please contact our helpdesk on 08081 434 434 or email [HS2enquiries@hs2.org.uk](mailto:HS2enquiries@hs2.org.uk)**

# Keeping you informed

We are committed to keeping you informed about work on HS2. This includes ensuring you know what to expect and when to expect it, as well as how we can help.

**Residents' Charter and Commissioner** The Residents' Charter is our promise to communicate as clearly as we possibly can with people who live along or near the HS2 [route](#).

[www.gov.uk/government/publications/hs2-residents-charter](http://www.gov.uk/government/publications/hs2-residents-charter)

We also have an independent Residents' Commissioner whose job is to make sure we keep to the promises we make in the Charter and to keep it under constant review. Find reports at:

[www.gov.uk/government/collections/hs2-ltd-residents-commissioner](http://www.gov.uk/government/collections/hs2-ltd-residents-commissioner)

You can contact the Commissioner at: [residentscommissioner@hs2.org.uk](mailto:residentscommissioner@hs2.org.uk)

## Construction Commissioner

The Construction Commissioner's role is to mediate and monitor the way in which HS2 Ltd manages and responds to construction complaints. You can contact the Construction Commissioner by emailing: [complaints@hs2-cc.org.uk](mailto:complaints@hs2-cc.org.uk)

## Property and compensation

You can find out all about HS2 and properties along the line of route by visiting:

[www.gov.uk/government/collections/hs2-property](http://www.gov.uk/government/collections/hs2-property)

Find out if you're eligible for compensation at:

[www.gov.uk/claim-compensation-if-affected-by-hs2](http://www.gov.uk/claim-compensation-if-affected-by-hs2)

## Holding us to account

If you are unhappy for any reason you can make a complaint via the helpline. For more details on our complaints process, please visit our website:

[www.hs2.org.uk/how-to-complain](http://www.hs2.org.uk/how-to-complain)

## Contact Us

If you have any questions about this notification of works, please get in touch.



24/7 Freephone **08081 434 434**



Minicom **08081 456 472**



Email [HS2enquiries@hs2.org.uk](mailto:HS2enquiries@hs2.org.uk)

Write to:

**FREEPOST**

**HS2 Community Engagement**

Website [www.hs2.org.uk](http://www.hs2.org.uk)

To keep up to date with what is happening in your local area, visit: [www.hs2inwarwicks.co.uk](http://www.hs2inwarwicks.co.uk)

**Please contact us if you'd like a free copy of this document in large print, Braille, audio or easy read. You can also contact us for help and information in a different language.**

HS2 Ltd is committed to protecting personal information. If you wish to know more about how we use your personal information please see our Privacy Notice

<https://www.gov.uk/government/publications/high-speed-two-ltd-privacy-notice>