



Working on  
behalf of

# HS2

## Notice of Auria Extension Demolition works

March 2019 | [www.hs2.org.uk](http://www.hs2.org.uk)

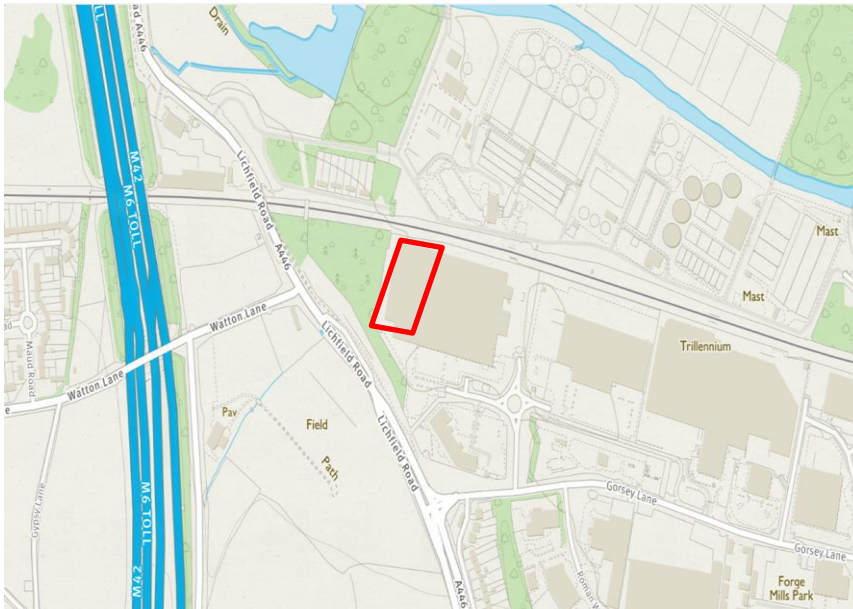
High Speed Two (HS2) is the new high speed railway for Britain. Early works for HS2 are carried out by a joint venture between Laing O'Rourke and Murphy & Sons known as LM.

### Auria Building Extension Demolition, Coleshill

Work is due to commence on the demolition of the building extension at Auria formerly known as IAC building. This is required as part of the enabling works that are currently taking place in preparation for HS2. These works will last for three months, subject to weather conditions. For future notifications about the works, please visit [www.hs2.commonplacewarwickshire.is](http://www.hs2.commonplacewarwickshire.is)

### You might see us at work

You may see us out and about around this location whilst we move vehicles and machinery into the area and start to erect fencing and hoarding where appropriate. We will ensure to keep disruption to a minimum to avoid any potential impact on local businesses.



**If you have a question about HS2 or our works, please contact our helpdesk on 08081 434 434 or email [HS2enquiries@hs2.org.uk](mailto:HS2enquiries@hs2.org.uk)**

## Notification



### Duration of works

March to May 2019

Working hours will be Monday to Friday, 8:00am to 6:00pm. Saturday 8.00am to 1.00pm

### What to expect

Some noise from onsite machinery during working hours.

### What we will do

Keep all sites safe and secure.

Maintain access to surrounding businesses.

Monitor and minimise potential impacts from demolition such as noise, dust and vibrations.

# Keeping you informed

We are committed to keeping you informed about work on HS2. This includes ensuring you know what to expect and when to expect it, as well as how we can help.

## Residents' Charter and Commissioner

The Residents' Charter is our promise to communicate as clearly as we possibly can with people who live along or near the HS2 route. [www.gov.uk/government/publications/hs2-residents-charter](http://www.gov.uk/government/publications/hs2-residents-charter)

We also have an independent Residents' Commissioner whose job is to make sure we keep to the promises we make in the Charter and to keep it under constant review. Find reports at: [www.gov.uk/government/collections/hs2-ltd-residents-commissioner](http://www.gov.uk/government/collections/hs2-ltd-residents-commissioner)

You can contact the Commissioner at: [residentscommissioner@hs2.org.uk](mailto:residentscommissioner@hs2.org.uk)

## Construction Commissioner

The Construction Commissioner's role is to mediate and monitor the way in which HS2 Ltd manages and responds to construction complaints. You can contact the Construction Commissioner by emailing: [complaints@hs2-cc.org.uk](mailto:complaints@hs2-cc.org.uk)

## Property and compensation

You can find out all about HS2 and properties along the line of route by visiting: [www.gov.uk/government/collections/hs2-property](http://www.gov.uk/government/collections/hs2-property)  
Find out if you're eligible for compensation at: [www.gov.uk/claim-compensation-if-affected-by-hs2](http://www.gov.uk/claim-compensation-if-affected-by-hs2)

## Holding us to account

If you are unhappy for any reason you can make a complaint via the helpline. For more details on our complaints process, please visit our website: [www.hs2.org.uk/how-to-complain](http://www.hs2.org.uk/how-to-complain)

## Contact Us

If you have any questions about this notification of works, please get in touch.

 24/7 Freephone **08081 434 434**

 Minicom **08081 456 472**

 Email **[HS2enquiries@hs2.org.uk](mailto:HS2enquiries@hs2.org.uk)**

Write to:

**FREEPOST**

**HS2 Community Engagement**

Website **[www.hs2.org.uk](http://www.hs2.org.uk)**

To keep up to date with what is happening in your local area, visit:

**[www.hs2.commonplacewarwickshire](http://www.hs2.commonplacewarwickshire)**

**Please contact us if you'd like a free copy of this document in large print, Braille, audio or easy read. You can also contact us for help and information in a different language.**

HS2 Ltd is committed to protecting personal information. If you wish to know more about how we use your personal information please see our Privacy Notice

<https://www.gov.uk/government/publications/high-speed-two-ltd-privacy-notice>

REF: 1EW04-LMJ-CO-NTE-NS04\_NL10-011001

High Speed Two (HS2) Limited, registered in England and Wales.

Registered office: Two Snowhill, Snow Hill Queensway, Birmingham B4 6GA.

Company registration number: 06791686. VAT registration number: 181 4312 30.