



## High speed video for your Miquis system

Miquis Video, available in both monochrome and color, is the native video camera for the Miquis motion capture camera system. Miquis Video integrates with Miquis infrared cameras using the same connection. When calibrated together, it streams perfectly synchronized video for 3D data overlay.

### SPEED

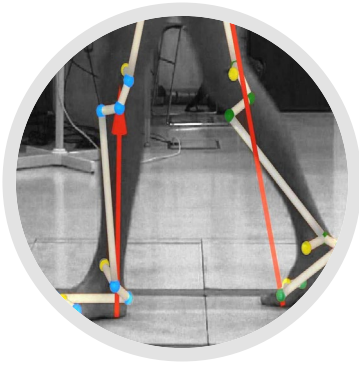
With its parallel on-board MJPEG encoder, the cameras are able to stream full HD video (1080p) at 85 frames per second. You can trade pixels for speed - capture at 330 fps and full field-of-view with a resolution of 0.5MP

### OVERLAY

Since the Miquis Video calibrates simultaneously with the rest of the Miquis system, you will always have perfect 3D overlay available without any extra effort.

### FEATURES

- High-quality video, available in monochrome or color
- Streams full HD at 85 fps
- Streams 0.5 MP at over 330 fps
- Synchronized 3D data overlay
- Seamless QTM integration
- Run standalone or together with mocap system



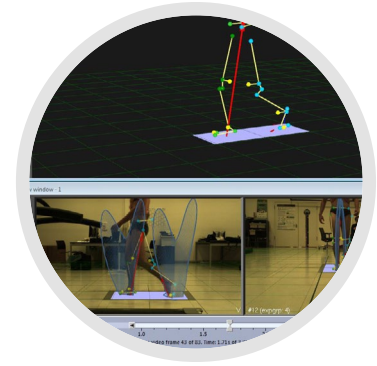
### 3D data overlay

As a single calibrated mocap system, 3D data can be visually aligned and drawn over the video capture.



### Ease of use

Images can be displayed in monochrome or color, and no additional hardware or software is required.



### Real-time streaming

Video is played back or streamed in real-time in the Qualisys Track Manager software

## TECHNICAL SPECIFICATIONS

Camera type		Monochrome or color video camera
Video output	Full HD	1920 x 1080 @ 85 fps
	HD	1280 x 720 @ 180 fps
	0.5 MP	960 x 540 @ 330 fps
	VGA	640 x 480 @ 550 fps
Lens	Standard	9 mm, 61° x 37° FOV
	Narrow	12.5 mm, 46° x 27° FOV
	Other	25 mm, 24° x 14° FOV
Strobe		White high-power LEDs
Streaming		Yes
High speed video		Yes
Video overlay		Yes, through regular wand calibration
On-board compression		Yes, MJPEG
Synchronization		Automatically with Miquis cameras. Integrates with Miquis sync unit for external sync.
Connection		1-connector daisy-chained Gigabit Ethernet and power
Operating temperature		0-35 °C
Camera body		140 x 84 x 84 mm (5.5 x 3.3 x 3.3 inches) Weight: ~ 0.7 kg (1.54 lbs)
Anti-theft		Kensington lock
Lens mount		C