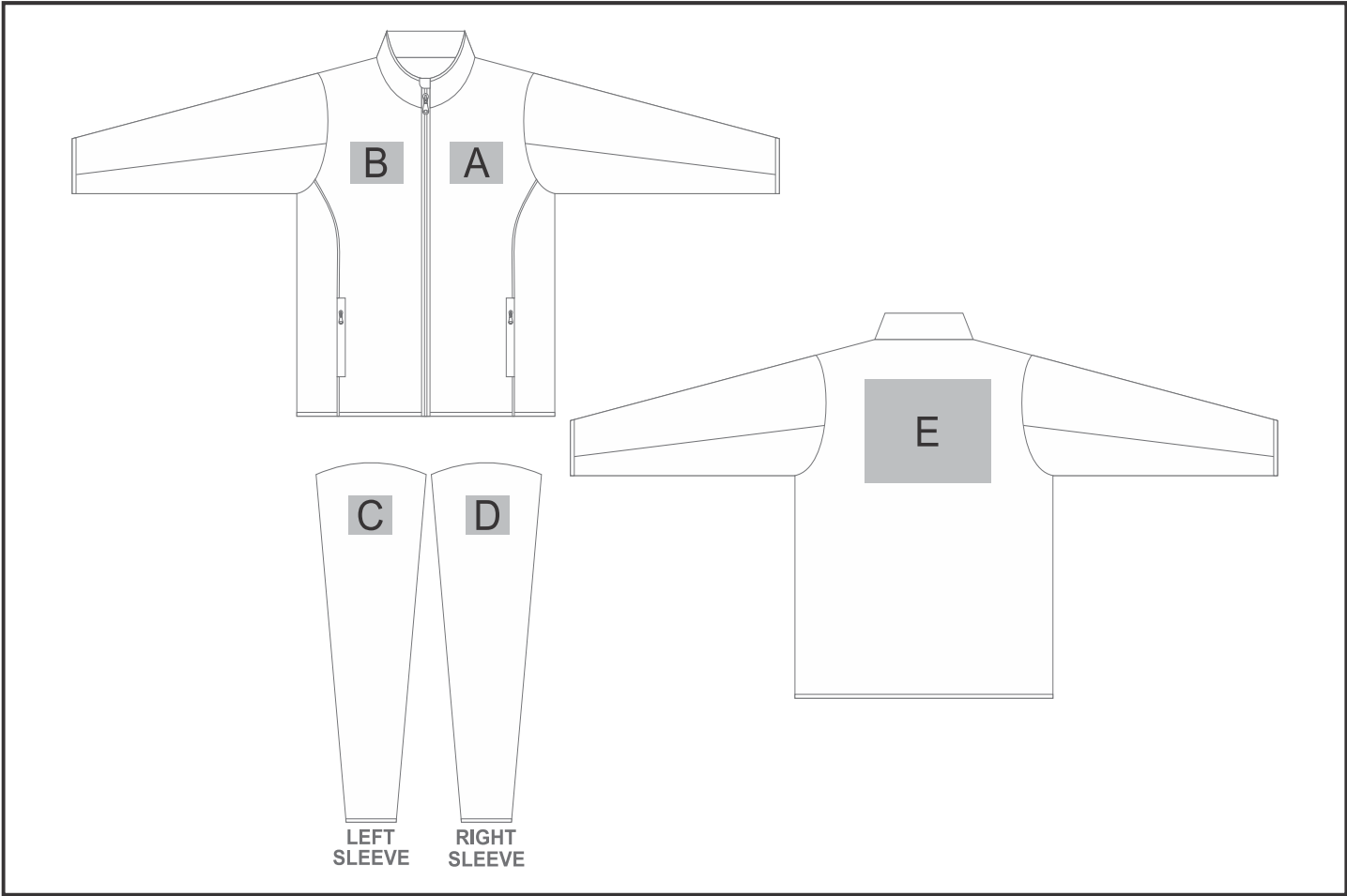


ALT-CTSU

Unisex Championship Tracksuit



Need to know:

- DTC inclusive Parameters: Left/Right Chest or Back = 100mm x 100mm

Branding Options:

Position	Branding Method (Branding Code)	No. of Colours	Dimension
A	Embroidery (EMB-A)	N/A	100mm wide x 100mm high
A	Screen Print (SB)	6 Colours	100mm wide x 80mm high
A	Digital Transfer Clothing A6 (DTC-A6)	Full Colour	100mm wide x 100mm high

B	Embroidery (EMB-A)	N/A	100mm wide x 100mm high
B	Screen Print (SB)	6 Colours	100mm wide x 80mm high
B	Digital Transfer Clothing A6 (DTC-A6)	Full Colour	100mm wide x 100mm high

C	Embroidery (EMB-A)	N/A	80mm wide x 80mm high
C	Screen Print (SB)	6 Colours	60mm wide x 60mm high
C	Digital Transfer Clothing A6 (DTC-A6)	Full Colour	80mm wide x 80mm high

D	Embroidery (EMB-A)	N/A	80mm wide x 80mm high
D	Screen Print (SB)	6 Colours	60mm wide x 60mm high
D	Digital Transfer Clothing A6 (DTC-A6)	Full Colour	80mm wide x 80mm high

E	Embroidery (EMB-A)	N/A	100mm wide x 100mm high
E	Screen Print (SB)	6 Colours	260mm wide x 200mm high
E	Digital Transfer Clothing A6 (DTC-A6)	Full Colour	148mm wide x 105mm high
E	Digital Transfer Clothing A5 (DTC-A5)	Full Colour	210mm wide x 148mm high
E	Digital Transfer Clothing A4 (DTC-A4)	Full Colour	290mm wide x 200mm high