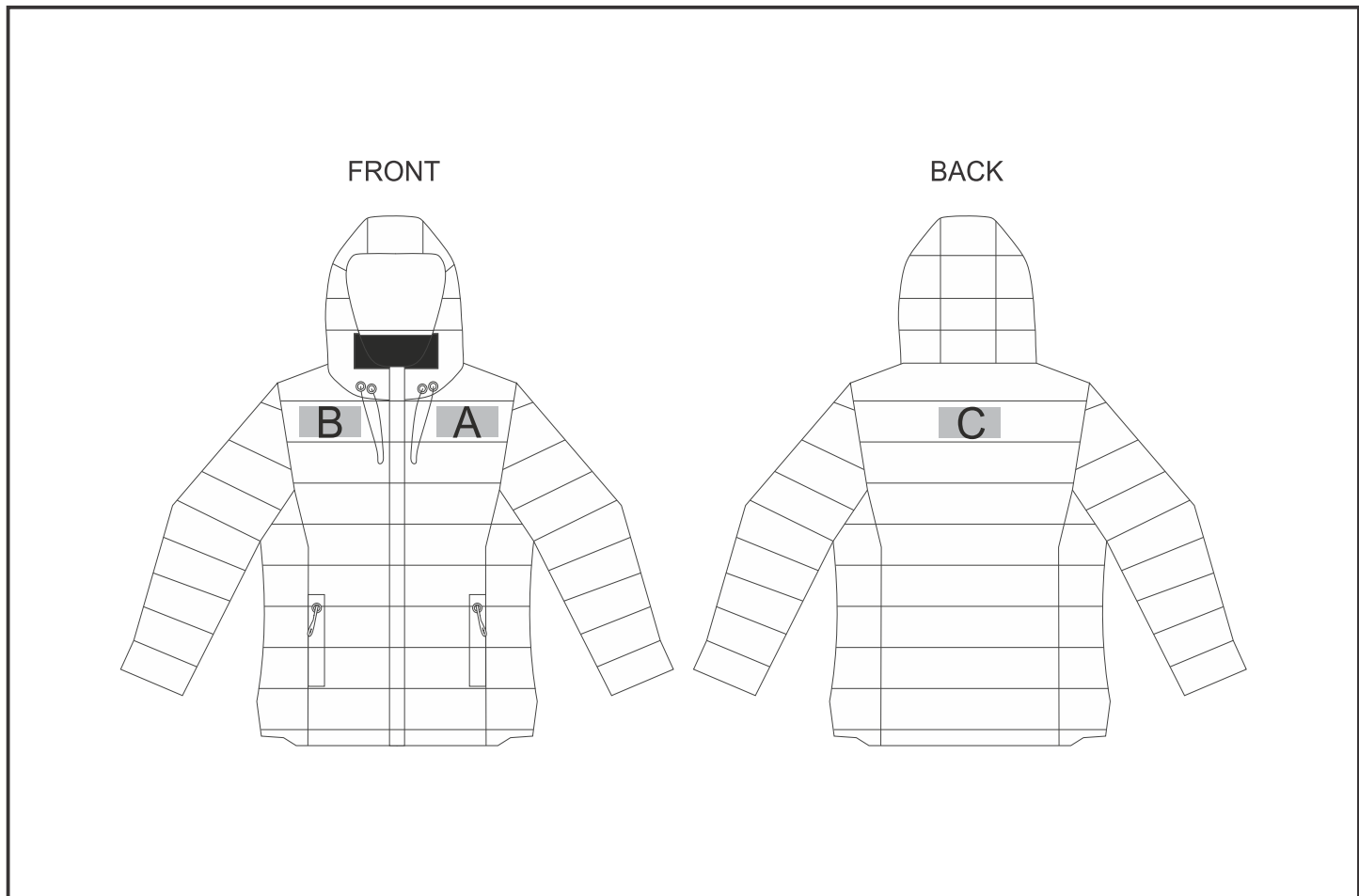


# ELE-11501

## Ladies Montana Jacket



### Need to know:

Includes 1 Position Embroidery (setup fee applies)

Cannot guarantee a 100% straight branding on any clothing item with check or stripe detail.

The panels on the garment are inconsistent from Small to XL.

The logo will be branded in the closest left / right chest and back panel, to the standard left/right chest and back position.

**DTC/EMB inclusive Parameters:** Left/Right Chest or Back = 100mm x 100mm

### Branding Options:

Position	Branding Method (Branding Code)	No. of Colours	Dimension
A	Embroidery (EM-CLOTHING)	N/A	100mm wide x 60mm high
B	Embroidery (EM-CLOTHING)	N/A	100mm wide x 60mm high
C	Embroidery (EM-CLOTHING)	N/A	120mm wide x 60mm high